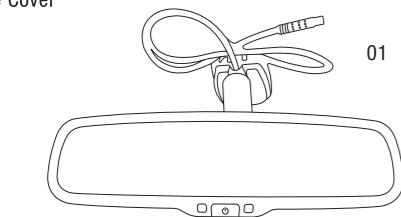


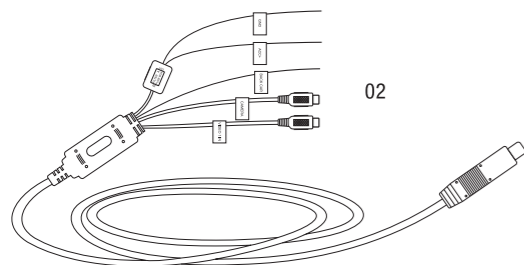
## 01 PACKAGE

This package contains the following accessories:

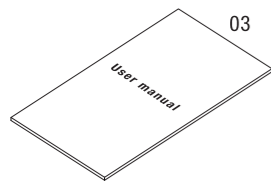
- 01 Rearview Mirror Monitor
- 02 Wire Harness
- 03 User's Manual
- 04 Wire Cover



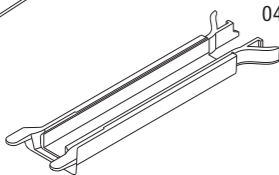
01



02



03



04

For the items listed above, please check the packing contents. If there are any missing items, Please contact your point of purchase as soon as possible.

## 02 FEATURES

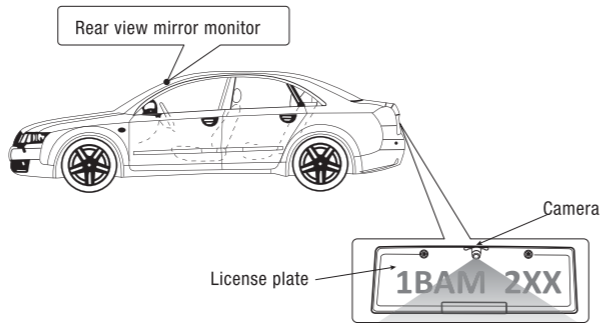
- Automatic Back Up Camera Display
- Dual Video Inputs
- Automatic LCD Brightness Adjustment
- 4.0 mm Glass Mirror and OEM Factory Style Bracket
- Compass and temperature (optional)
- Auto dimming Mirror (optional)

## 03 SPECIFICATIONS

- Back Up Camera Display (auto switch)
- Dual Video Inputs
- Signal System: PAL / Auto / NTSC
- Screen Size: 4.3 inch
- Display Screen: TFT-LCD
- Aspect Resolution: 480(H) X 272(V)
- Working Voltage: DC 12V

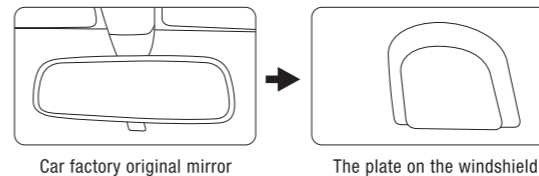
## 04 HOW TO INSTALL REVERSE CAMERA

Mount the camera at the top of the licence place. Depending on the camera, you may use the existing license plate screws.



## 05 HOW TO INSTALL MIRROR MONITOR

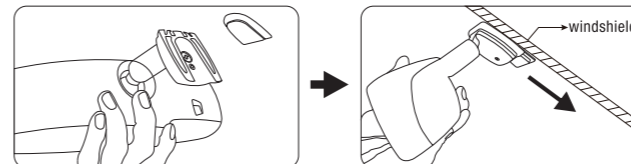
Remove the Original Mirror (leave the mounting plate on the windshield)



Different vehicle manufacturers may have different mounting brackets. There are many methods to remove the original rear view mirror. Check with the manufacturer for best removal methods. Please don't force the mirror off the brackets.

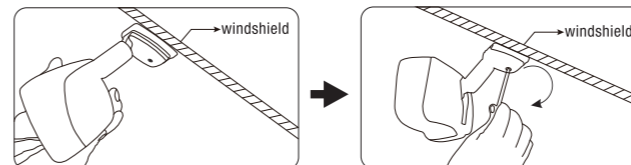
Master Tailgaters will not be responsible for any damage caused by improper removal and installation of the mirror.

### Installing the Rearview Mirror to the Mounting Bracket



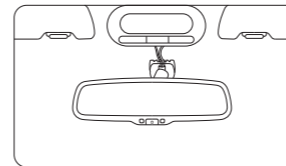
Remove the existing rearview mirror

Install rear view mirror from top to bottom



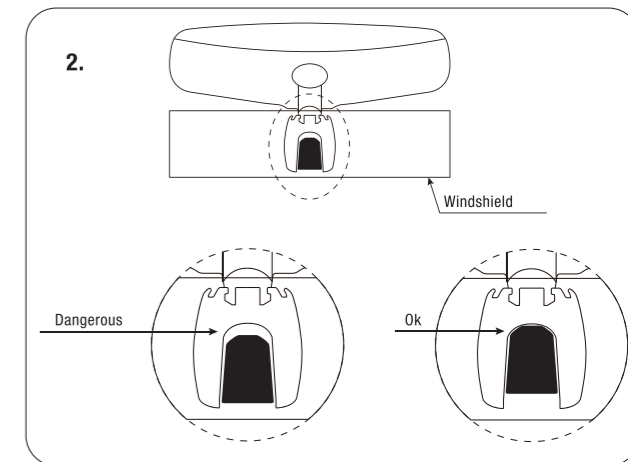
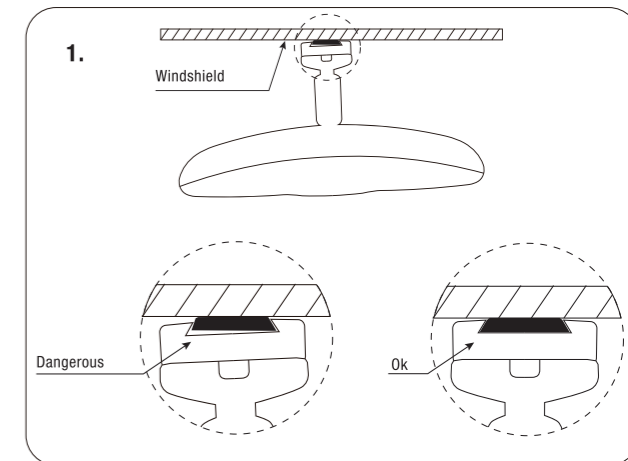
Ensure that the mirror is fully seated onto the bracket. Mirror should not be loose.

Contrarotate the fixed rear view mirror  
Torque is about 0.8-1.3 N.m

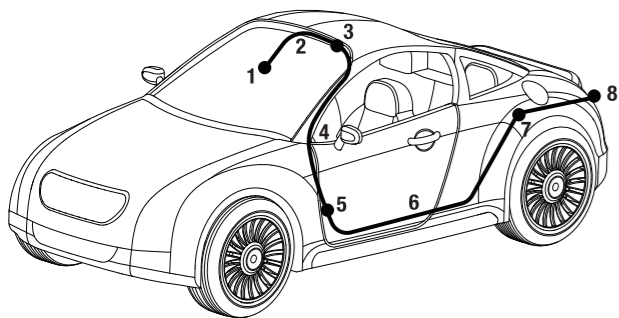
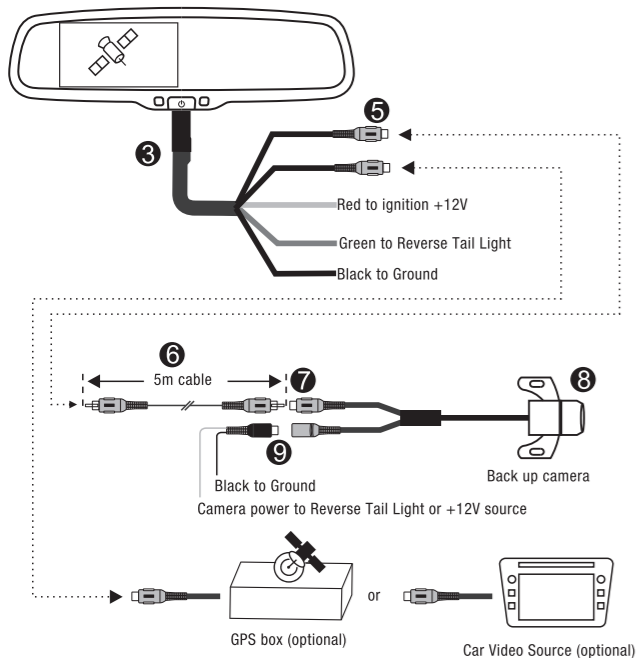


**NOTE:** Always use caution, DO NOT force the removal or installation. Master Tailgaters will not be responsible for any damage to the window. If you are unsure about the installation, it is suggested to find a professional.

### CAUTION!

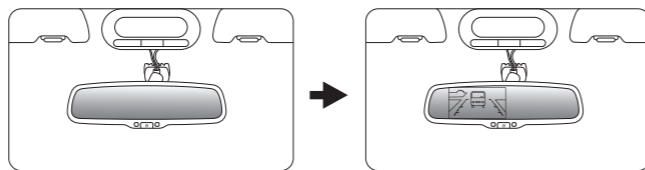


## 06 HOW TO WIRE



## 07 BACK UP CAMERA DISPLAY

When the car is in reverse, the monitor will automatically display back up camera.



## 09 AUTOMATIC BRIGHTNESS ADJUSTMENT

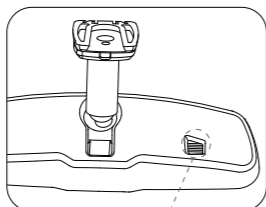
The brightness of screen varies with ambient light.

**LOW LIGHT** When ambient light is low, the screen will automatically reduce the brightness.

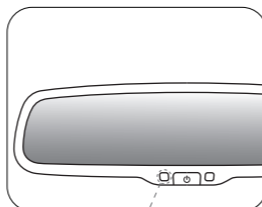
**BRIGHT LIGHT** When ambient light is bright, the screen will automatically increase the brightness.

## 10 AUTO-DIMMING (OPTIONAL)

Auto-dimming rear-view mirrors increase driving safety by eliminating glare that can impair vision. In auto-dimming technology, a forward-looking sensor detects low ambient light from headlights behind the car and directs the rear-view sensor to reduce glare. The mirror will darken automatically in proportion to how bright the glare is.



the light sensor from the back of mirror detects the ambient light



front light sensor detects the light from rearward-approaching vehicles.



The button (opt)

Video input: short press to turn on/off auto-dimming  
long press to turn on/off the screen.

Camera input: adjust brightness of screen

This device complies with Part 15 of the FCC Rules. Operation is subject to the following two conditions:

- (1) this device may not cause harmful interference,
- (2) this device must accept any interference received, including interference that may cause undesired operation. changes or modifications not expressly approved by the party responsible for compliance could avoid the user's authority to operate the equipment.

**NOTE:** This equipment has been tested and found to comply with the limits for a Class B digital device, pursuant to Part 15 of the FCC Rules. These limits are designed to provide reasonable protection against harmful interference in a residential installation. This equipment generates, uses and can radiate radio frequency energy and, if not installed and used in accordance with the instructions, may cause harmful interference to radio communications. However, there is no guarantee that interference will not occur in a particular installation.

If this equipment does cause harmful interference to radio or television reception, which can be determined by turning the equipment off and on, the user is encouraged to try to correct the interference by one or more of the following measures:

- Reorient or relocate the receiving antenna.
- Increase the separation between the equipment and receiver.
- Connect the equipment into an outlet on a circuit different from that to which the receiver is connected.
- Consult the dealer or an experienced radio/TV technician for help.

To maintain compliance with FCC's RF Exposure guidelines, This equipment should be installed and operated with minimum distance between 20cm the radiator your body: Use only the supplied antenna.



**No entertainment video is permit when driving except the demo for navigation and backup camera display!**

**\* This manual is only for your reference, please check the actual product as the standard!**

# Master Tailgaters

## High Brightness Rear View Mirror with LCD Monitor

USER MANUAL

www.mastertailgaters.com

