

http://www.starsoft.com/software/win500/ Win500: WS1040, WS1065, P... X

File Edit View Favorites Tools Help

Google Win500 Search Share Win500 More >> Sign In

AA Amazon Banks Bills Dict-R DMR Maps NASCAR Sched RS Scanners RRDB Rx Whistler Wx Yelp-Keller Infrequent Gov't

Win500

Data management, monitoring, and control software for the Whistler WS1040 and WS1065, GRE PSR-500 and PSR-600, as well as the RS PRO-106, PRO-197, PRO-651, and PRO-652 Digital Trunking Scanners, plus the GRE PSR-310 and PSR-410 Analog Trunking Scanners

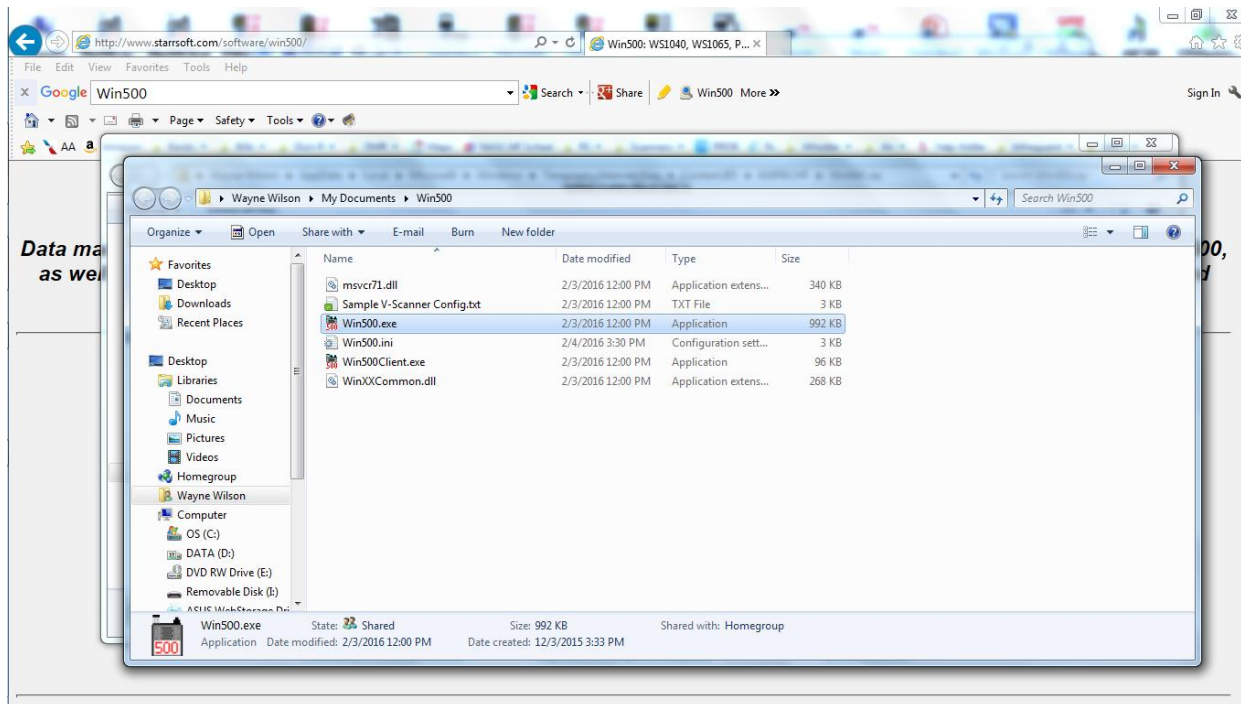
Win500	Remote Monitoring Client <i>Free</i>	PocketPC Remote Client <i>Free</i>
Version 2.08	Version 1.17	Version 1.05
2015.04.06 12:35 MST	2011.01.27 15:18 PST	2009.01.27 08:20 PST
Download	Download	Info

IMPORTANT: Win500 v1.74 (and later) requires the latest version of the drivers for the USB / Serial programming cable. FTDI, the manufacturer of the chipset used in the GRE/RS programming cable, makes those drivers available [here](#).

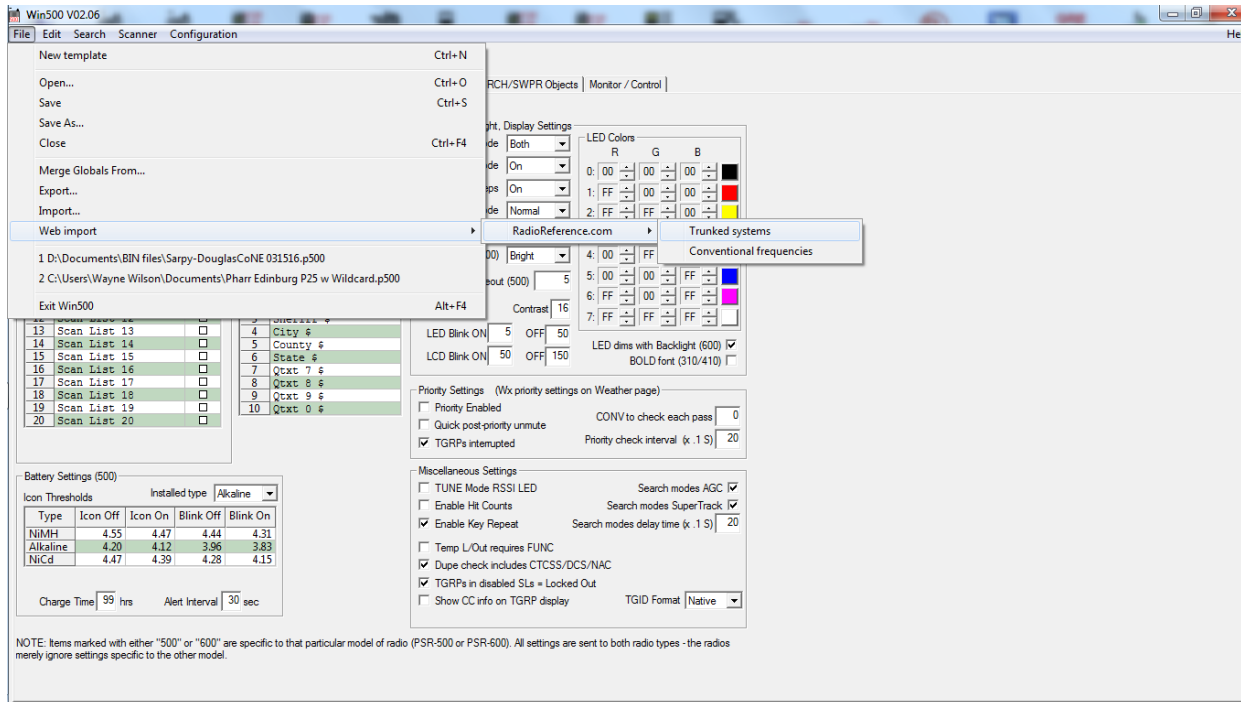
Note to Linux users: If you need to access the USB/Serial cable as a 'COM port' under Wine, you can run the Win500_COM.EXE executable. The only difference between it and the Win500.EXE file is how the program accesses the cable (COM port vs. directly to driver).

[Register\(\\$30.00\)](#) [Features](#) [What's new](#)
[Factory V-Scanners](#) [System requirements](#) [Installation](#)

(Note: Release date and version number may change)

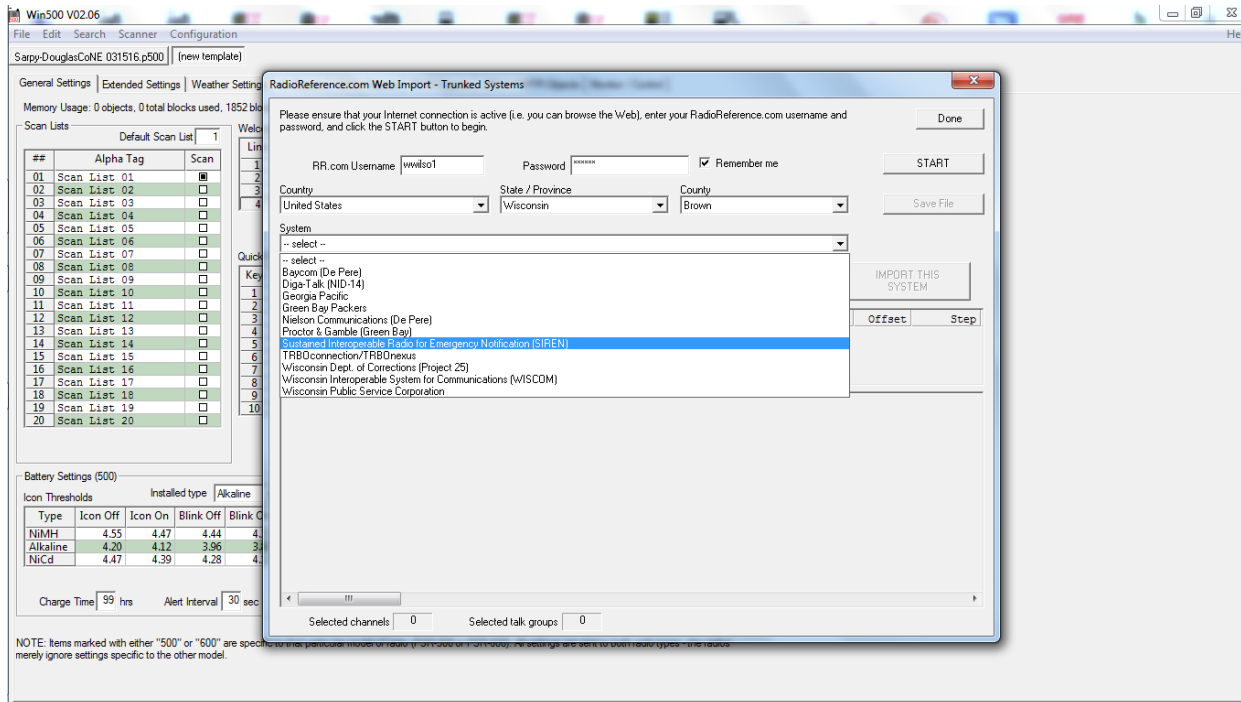


Click on Win500.exe (your PC may not show the exe extension) to unzip. Unzip all files and save them to a new folder – you should name it Win500. Click on Win500.exe to launch the program.

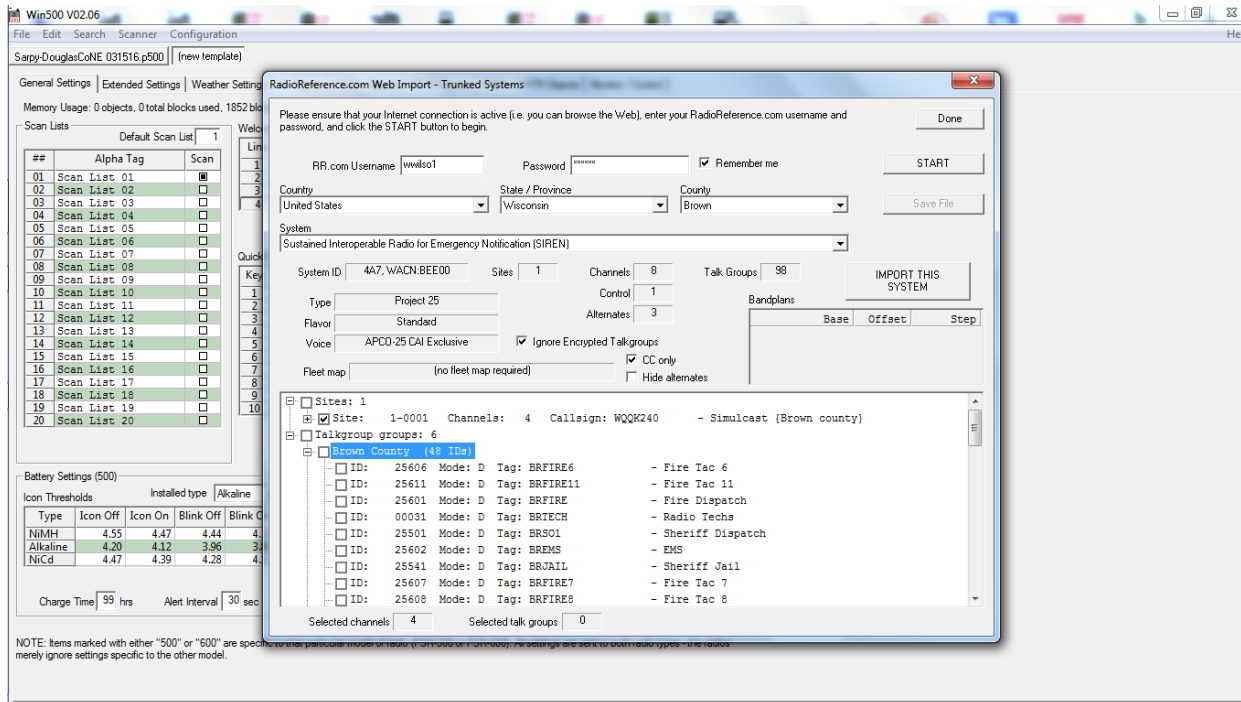


Click on File, Web Import, RadioReference, Trunked systems. Expand the program's window so you can see all of the options without scrolling.

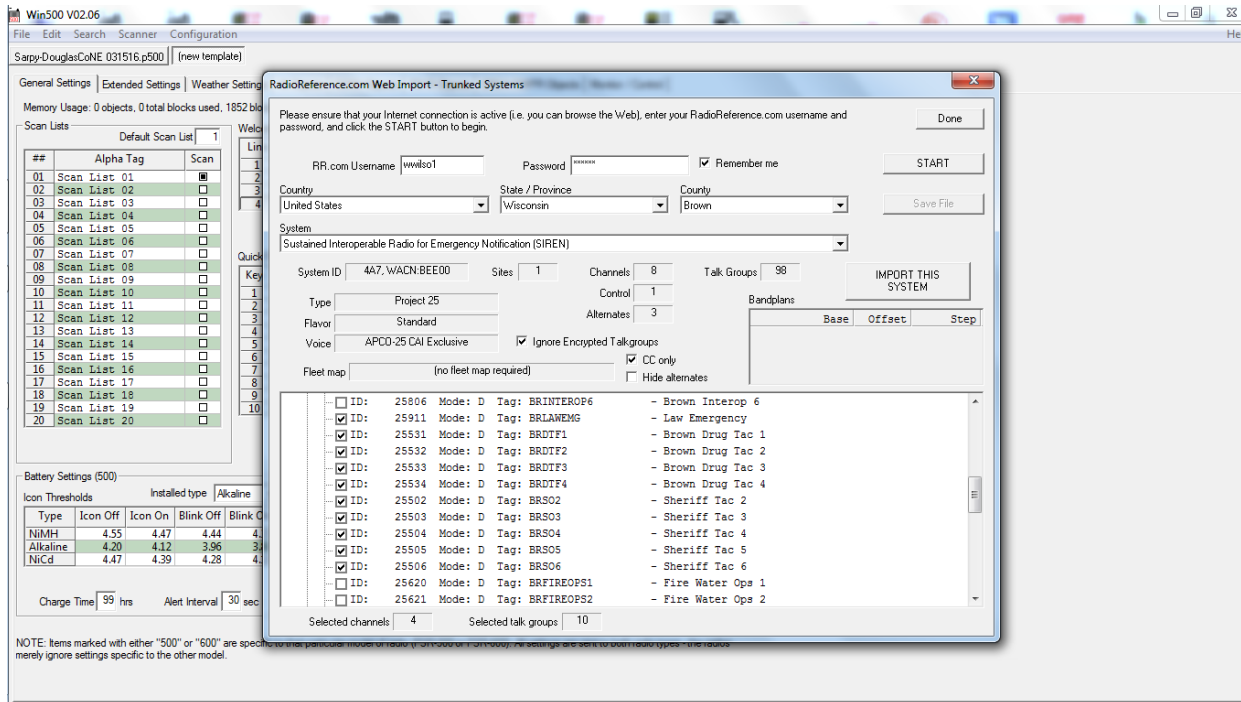
Note: Premium Membership to RadioReference.com is required.



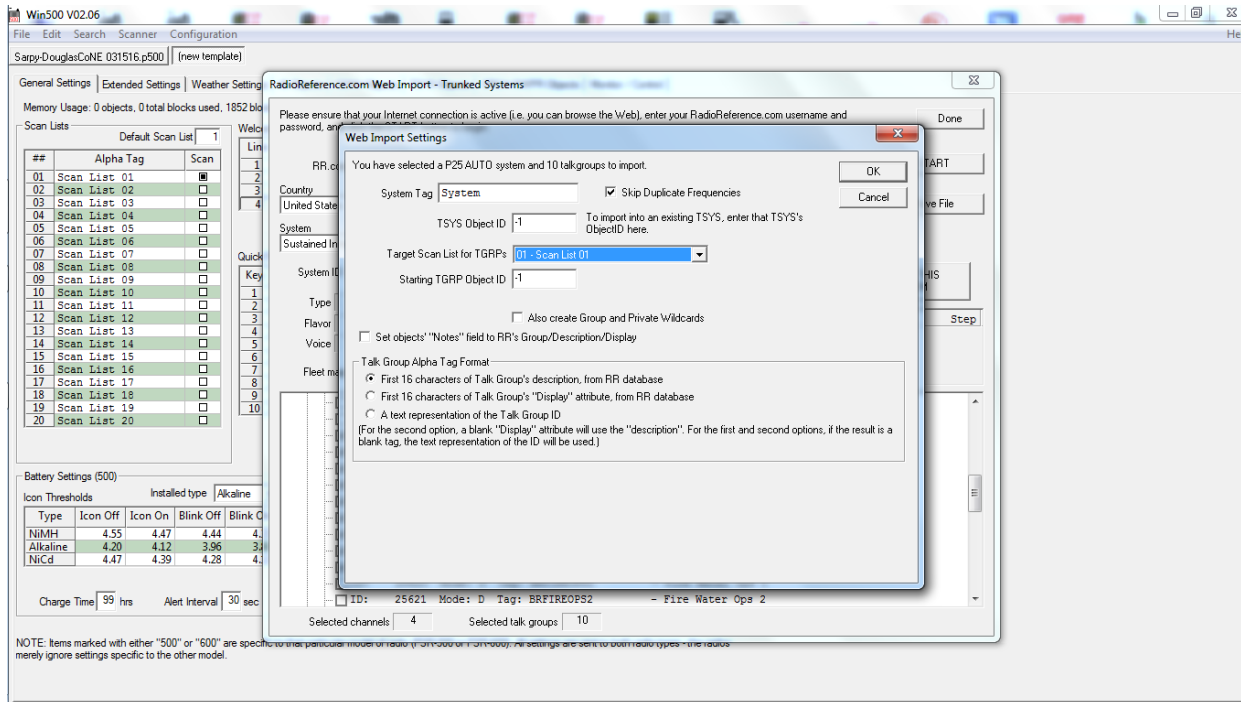
Enter your radioreference.com ID and password, check the "remember Me" box to save your ID and password, then click on START. Click on United States, then your state and county. Select the trunked system you need and click on it.



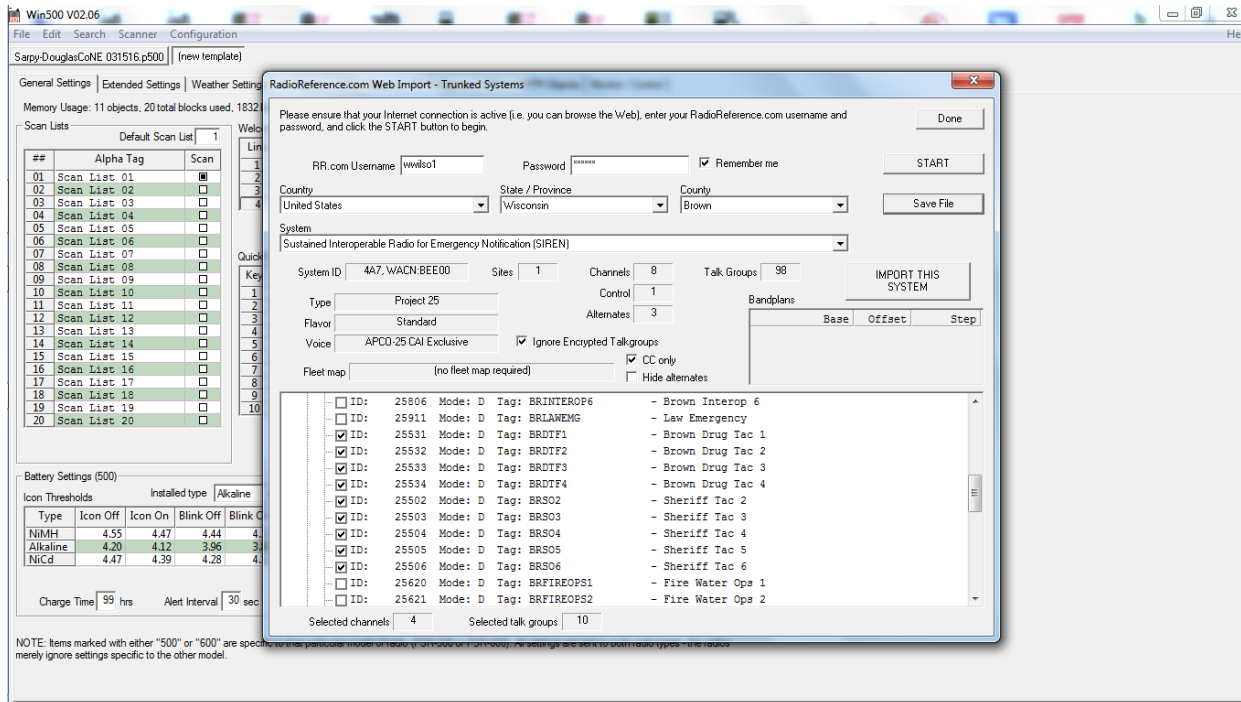
Click on the + to expand Sites and select your site(s); Scroll down to "Talkgroups" then click on the + to expand Talkgroups. In the example Brown Co is selected.



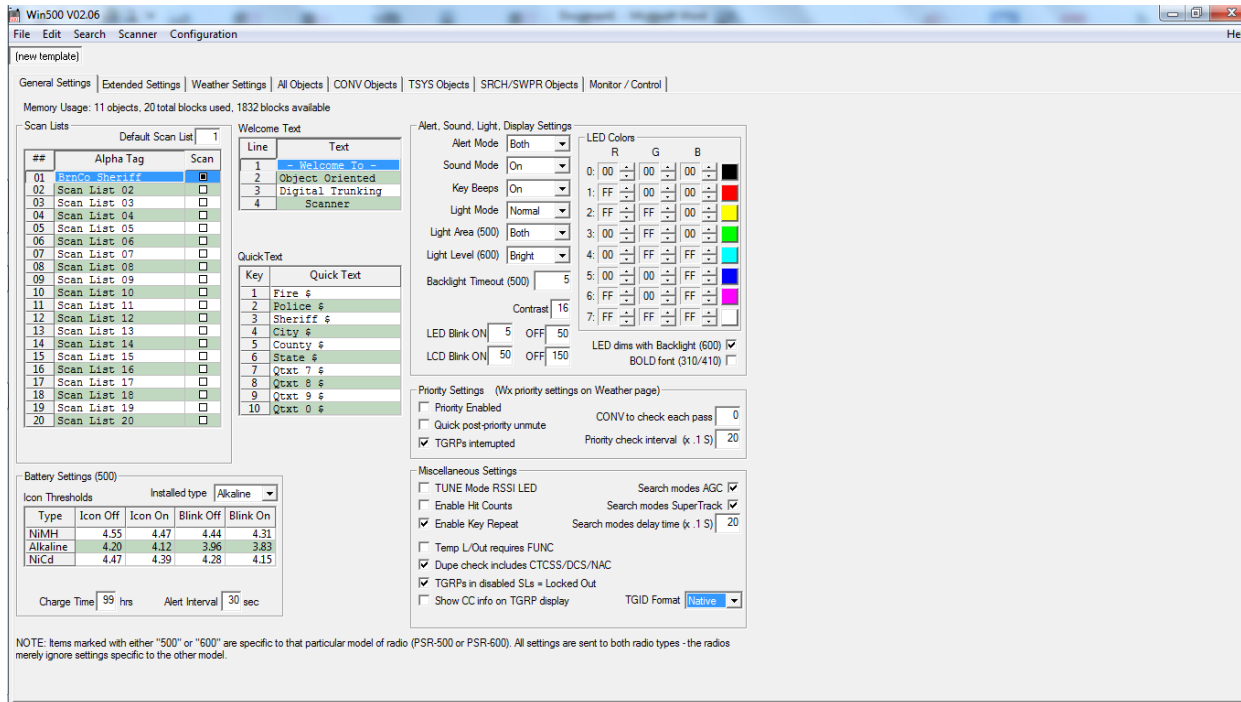
Select the talkgroups for one service.



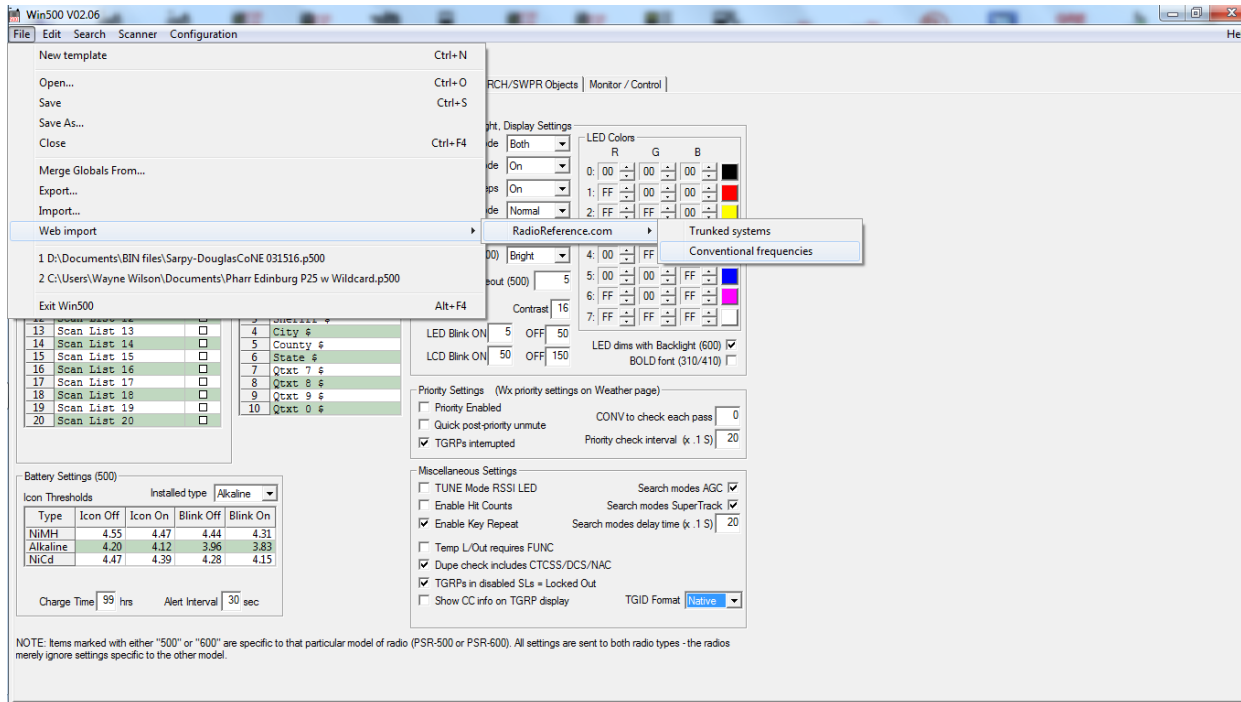
Click on "Import this System" and set "Target Scan list for TGRPs" to Scan list 01, click OK.



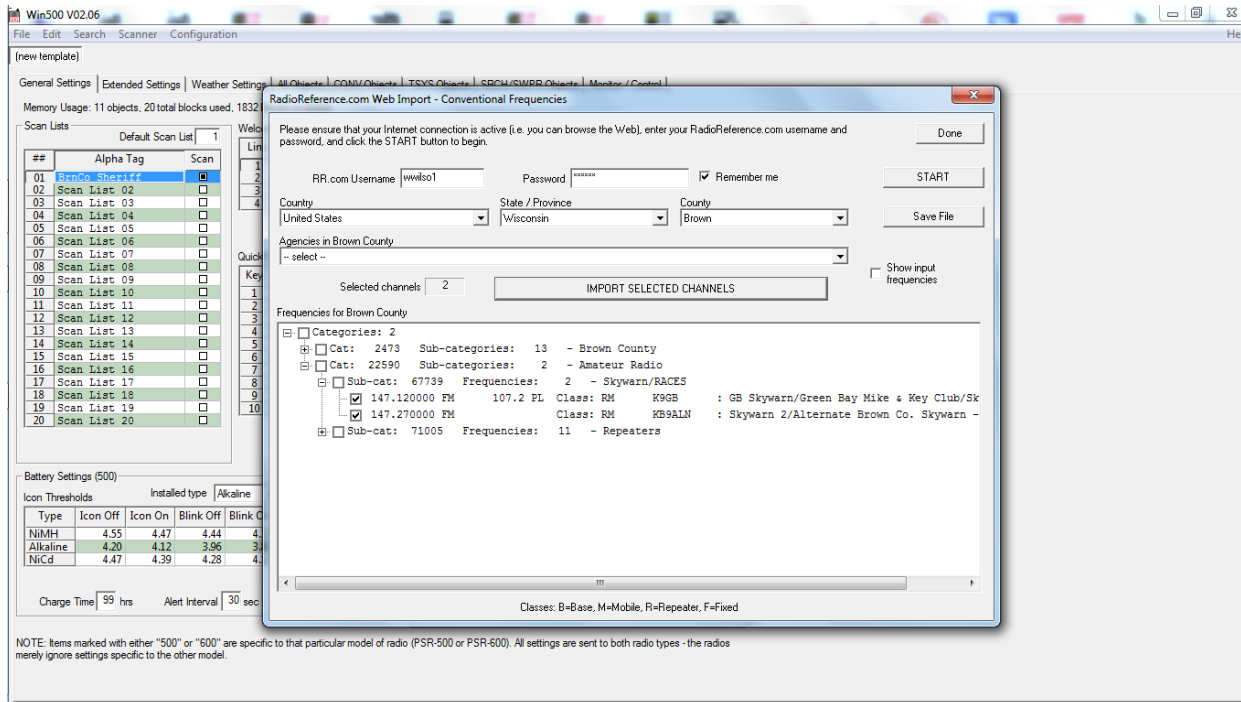
Click Done to complete this scanlist save.



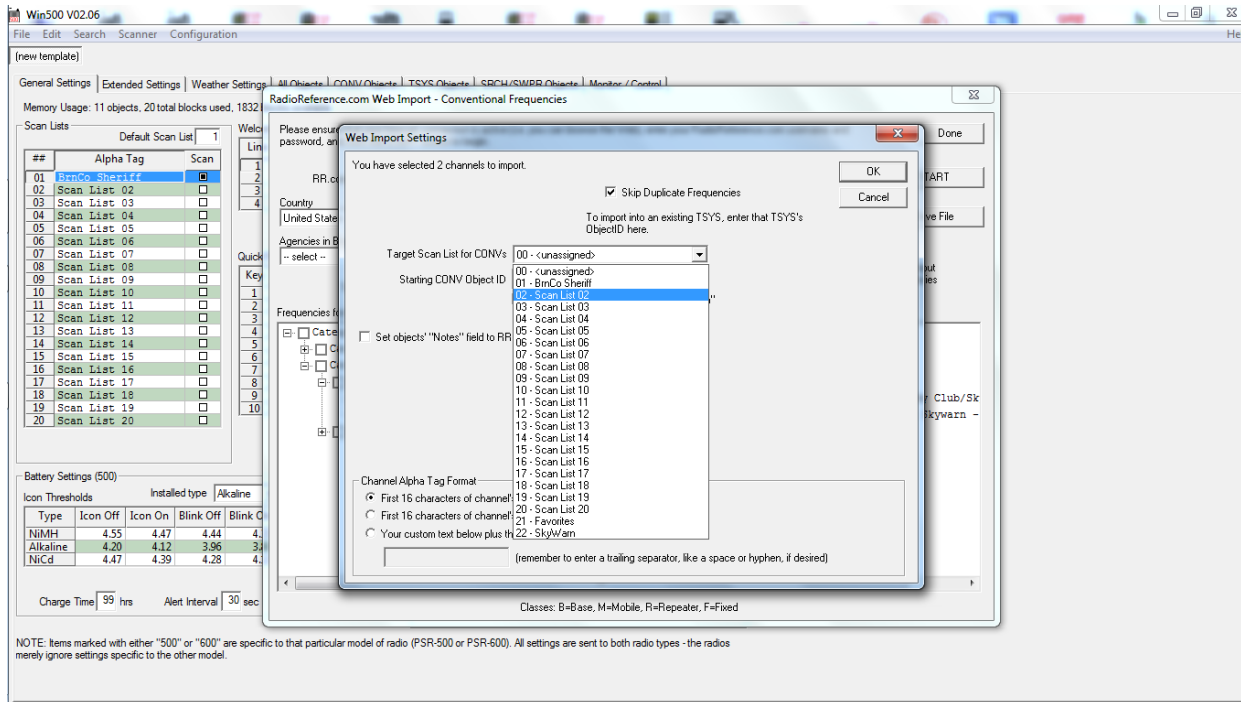
Click on Scanlist 01 and rename the scanlist. In this example it was renamed BrnCo Sheriff. **Tip: Renaming the scan lists as you go so you know what the next empty scan list is. It also lets you know what is in each scanlist.**



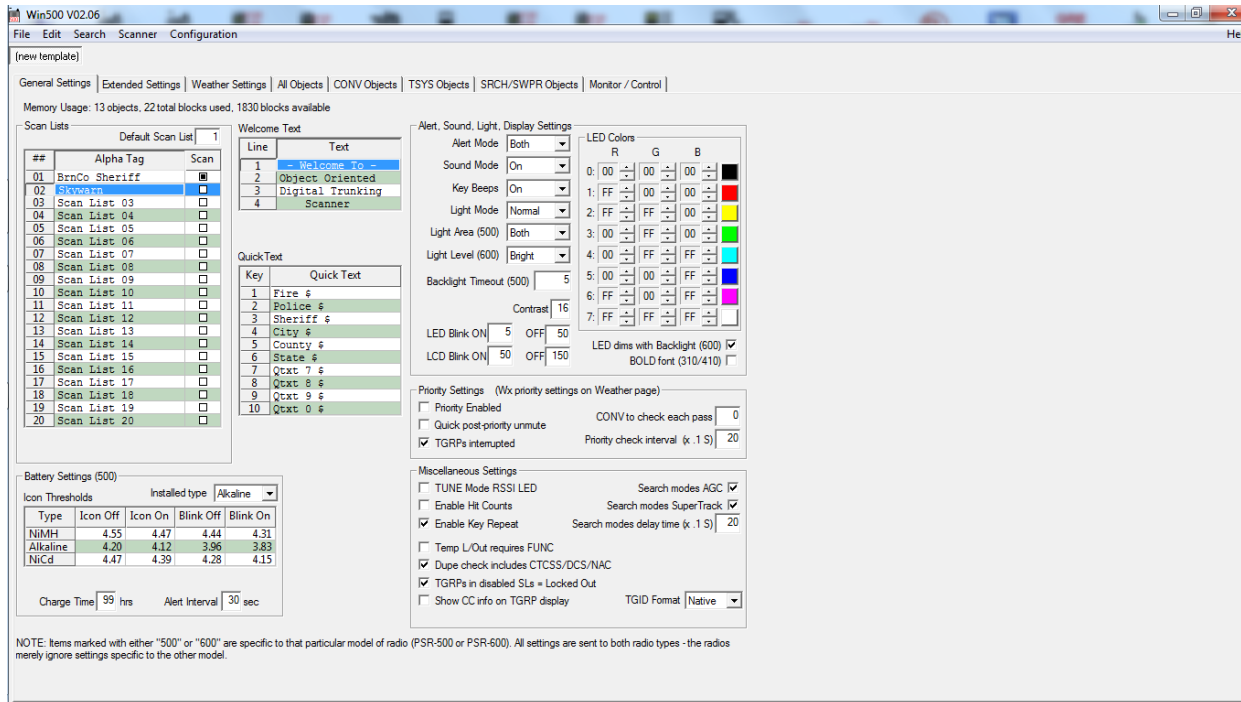
Importing conventional objects works the same way. File, Web Import, Radioreference, Conventional.



Importing Skywarn frequencies in this example: Click on Start. Click on United States, then your state and county. Expand the categories, expand sub-categories, check the two boxes for Skywarn and click on the Import Selected Channels.



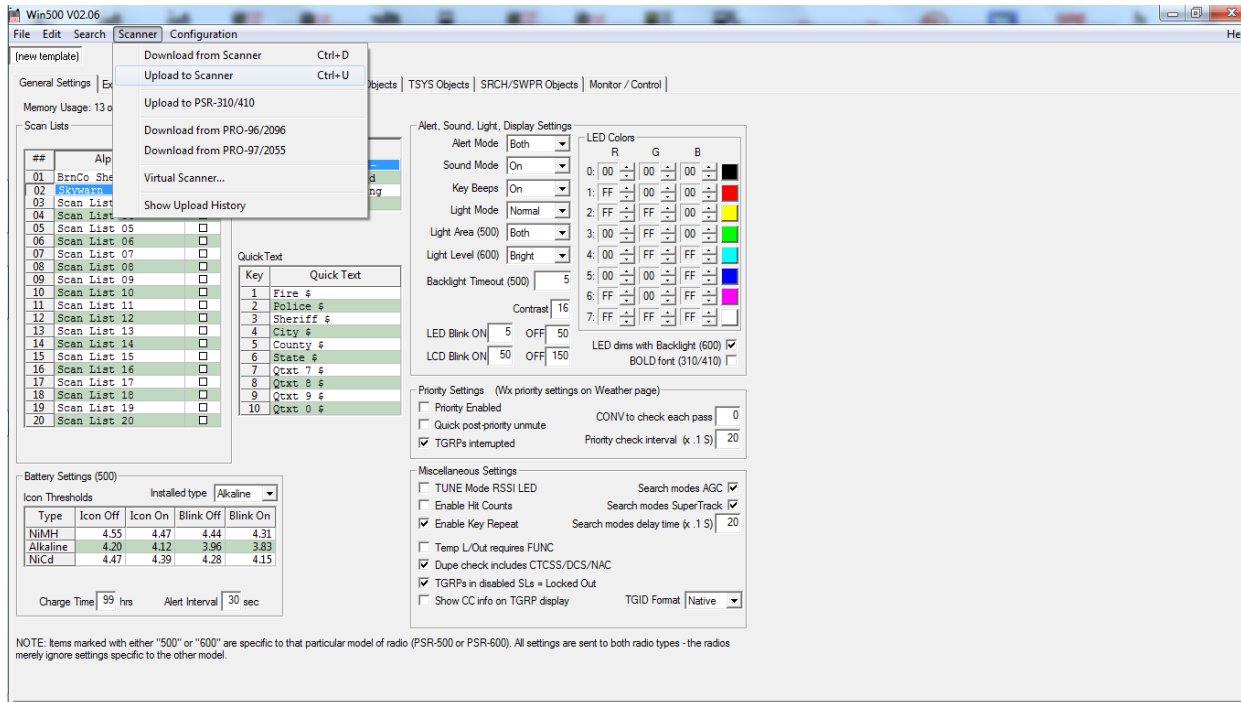
Select the next available scanlist and click OK.



Click Done to return to the General Settings tab and rename scanlist 02. Note: Instead of using a regular scanlist for Skywarn, there is special functionality if you add Skywarn objects to the SW scanlist. Objects can belong to more than one scanlist.

Repeat this procedure until you have your scanner programmed for everything you want. Don't forget Careflight if you have one and Skywarn – and add colors for each object such as blue for police, red for fire, yellow EMS/Hosp – however you like.

Finally, it's time to upload to your WS1040 or WS1065 scanner.



Turn your scanner on and plug in the PC/IF cable into the scanner's PC/IF jack. Click on "Scanner", then select "Upload to Scanner". The upload completes very quickly. When complete, unplug the scanner and press SCAN. All enabled scanlists will be scanned. Toggle scanlists on or off by pressing the number of the scanlist while in the scan mode. For example, press 4 to toggle scanlist 4 on or off. Press Func button then a number (1 to 0) to turn scanlists 11-20 on or off.