

OPERATION

Alert Priority

When two or more signals are received at the same time, the alert priority is:

1. Laser 2. Speed Radar 3. Safety Warning System™

Example: If X band is alerting, then suddenly a laser signal is detected, the laser warning will override the X band alert.

SWS™

Safety Warning System™

In communities where transmitters are located, the Safety Warning System™ provides over 60 text messages. When SWS™ is detected the audio alert is geiger counter-like.

Safety Warning System Text Message

Example: Poor - Road - Surface.

Note: Not all areas have Safety Warning System™ transmitters.

Intelllicord® Ready

The optional INTELLICORD® power cable allows the user to remotely control Power, City, Dim, Quiet and Auto Quiet functions with the press of a button located on the power cable's plug.

15

SPEED MONITORING

Laser Tips

If you are the targeted vehicle, a laser gun can often determine your speed within a few seconds after you receive an alert. In this situation, there is generally no time to safely adjust your speed. However, if you are traveling near or behind the targeted vehicle and receive an alert, response time should be sufficient. Any laser alert, regardless of duration, requires immediate action.

Radar Facts

A radar gun operates by transmitting radio waves at certain frequencies which reflect off objects and are picked up by the radar gun's receiving section. When a radar beam reflects off a moving target, a measurable frequency shift occurs. The radar unit converts this shift into miles per hour to determine your vehicle's speed. Currently, the FCC (Federal Communications Commission) permits operation of traffic radar guns at X Band (10.500 - 10.550 GHz), K Band (24.050 - 24.250 GHz), and Ka Band (33.400 - 36.000 GHz).

Note: A radar detector will only alarm if an officer is transmitting on any one of the above radar bands.

Other Speed Detection Systems

Several techniques other than radar or laser are used to measure vehicle speeds. When these methods are being used, no detector can provide a warning. These techniques include:

- **Pacing** - A patrol car drives behind you and matches your driving speed.
- **Vascar/Aircraft** - The police measure the time it takes your vehicle to travel a known distance.

22

OPERATION

Reset Features

All user features can be reset to factory settings.

- Unplug the Power Cord from the unit.
- Press and hold the Power and Quiet buttons.
- Plug the Power Cord into the unit.
- Wait for 2 beeps.
- Release the Power and Quiet buttons.

Unit is now reset to the following features and settings.

Default factory settings are:

1. S1: (For Intelllicord®) Quiet feature
2. S2: (For Intelllicord®) Power ON or OFF
3. ADIM: ON (Auto Dim ON)
4. HIGHWAY Mode
5. Dim/Dark Mode to full illumination of display.
6. Auto Quiet Mode OFF
7. SWS™ OFF
8. Vehicle Battery Saver ON
9. Full Power Up sequence
10. Default TONE 3
11. All Bands ON
12. LASER NORM
13. All Laser Windows ON
14. POP OFF
15. Voice® ON
16. LED Periscopes to BLNK
17. X/K Filter 1
18. Ka Filter 1
19. TFSR OFF

16

SPEED MONITORING

Radar Detector Detectors: VG-2, Spectre

The Interceptor VG-2 or simply VG-2, is one type of microwave receiver used by Police to detect signals radiated by the local oscillator of a radar detector. Because its purpose is to identify persons driving with radar detectors, these devices are known as a "radar detector detector" (RDD).

An RDD is the primary tool used by the police to identify radar detector equipped vehicles. If caught in a state or country where detectors are illegal (see page 20), drivers risk losing their radar detector and receiving a fine. In addition, instant-on radar is almost always used in combination with an RDD, leaving unsuspecting motorists vulnerable to receive two tickets; one potential for speeding, and the other for possession of a detector. **Note:** The newest tool Police have to detect radar detectors is called Spectre. Spectre can detect the majority of undetectable (VG-2) laser/radar detectors on the market.

It is the responsibility of the individual radar detector user to know and understand the laws in your area regarding the legality of the use of radar detectors.

WARRANTY INFORMATION

Consumer Warranty

This Whistler Laser-Radar detector is warranted to the original purchaser for a period of one year from the date of original purchase against all defects in materials and workmanship. This limited warranty is void if the unit is abused, modified, installed improperly, or if the housing and/or serial numbers have been removed. There are no express warranties covering this product other than those set forth in this warranty. All express or implied warranties for this product are limited to the above time. Whistler is not liable for damages arising from the use, misuse, or operation of this product.

Note: Units that cannot be repaired will be replaced with the same or similar model. Replacement unit's warranty will be based on the original unit's purchase date.

23

OPERATION

Whistler has two features that will assist the driving enthusiast to further identify threats from laser and Ka band radar guns.

Ka RSID (Ka Radar Signal Identifier)

Identify the difference between the likelihood of a Ka threat vs. the likelihood of a Ka false from another source (possible radar detector). Ka RSID feature will educate you to the common Ka speed radar guns by displaying the nominal police radar frequencies of 33.8GHz / 34.0GHz / 34.3GHz / 34.7GHz / 35.5GHz. Ka alerts that do not fall into the common Ka speed radar windows will be reported only as Ka.

Note: This product is not a frequency counter. The unit will categorize the received Ka signal and select the appropriate information. Treat every Ka alert with caution.

LSID (Laser Signal Identifier)

Identify the Laser gun's pulse rate or PPS (Pulses Per Second) that is transmitted by the speed laser gun. LSID may also be used to identify other forms of laser sources such as LACC (Laser Assisted Cruise Control) systems found in some high end vehicles. If the Laser PPS information displayed is due to another source such as local airports or LACC, LSID allows you to Lock Out this rate from giving you the continuous audio alert during this and any new encounter of the same rate. To Lock Out a PPS, press the Quiet button during the Laser alert. This will place an * on the screen beside the PPS rate and Lock Out this signature ID. Any new encounter with the same Laser Signature ID will provide the display information and two quick beeps.

Note: Common Laser PPS rates used in the USA are 100 / 125 / 130 / 200 / 238 / 380Hz. Other Laser PPS rates used outside the USA include 600Hz.

Caution: Do not lock out a PPS rate if it is close to known speed laser guns.

17

WARRANTY INFORMATION

Service Under Warranty

During the warranty period, defective units will be repaired without charge to the purchaser when returned with a dated store receipt to the address below. Units returned without a dated store receipt will be handled as described in section "Service Out Of Warranty." Due to the specialized equipment necessary for testing a Laser-Radar receiver, there are no authorized service stations for Whistler brand detectors other than Whistler.

When returning a unit for service, please follow these instructions:

1. Ship the unit in the original carton or in a suitable sturdy equivalent, fully insured, with return receipt requested to:

Whistler Repair Dept.
1412 South 1st St.
Rogers, AR. 72756

Please allow 3 weeks for turn around time.

Important: Whistler will not assume responsibility for loss or damage incurred in shipping. Therefore, please ship your unit insured with return receipt requested. **CODs will not be accepted!**

2. Include with your unit the following information, clearly printed:
 - Your name and street address (for shipping via UPS), a daytime telephone number and an email address, if applicable.
 - A detailed description of the problem (e.g., "Unit performs self-test but does not respond to radar").
 - A copy of your dated store receipt or bill of sale.

24

POP™ MODE ALERTS

POP™ Mode Alerts

Because POP™ Mode radar utilizes the same K or Ka band frequencies, POP™ Mode Alerts will be displayed as regular radar alerts.

LASER/RADAR ALERTS

Speed Radar Audio/Visual Alerts

When X, K or Ka is detected, the band ID and signal strength are displayed. The audio alert is continuous and has a geiger counter-like pattern. The faster the beep, the closer or stronger the radar source.

Laser Audio/Visual Alerts

When a laser signal is detected the audio alert is continuous for a minimum of 3 seconds.

- The Displays Shows: 

Pulse Protection®

Pulse (or instant-on) radar is more difficult to detect than conventional radar because it remains 'off' until activated to measure the speed of a targeted vehicle.

When a pulse type transmission is detected, your Whistler detector sounds an urgent 3-second audio warning and the display shows:

'PULSE'

After the 3-second pulse alert, the standard alert pattern continues for as long as the signal is present.

It is important to respond promptly to a pulse alert, since warning time may be minimal.

18

WARRANTY INFORMATION

3. Be certain your unit is returned with its serial number. For reference, please write your unit's serial number in the space provided on page 27 of this manual.

Units without serial numbers are not covered under warranty.

Important: To validate that your unit is within the warranty period, make sure you keep a copy of your dated store receipt. You may register your warranty online at www.whistlergroup.com, however, for warranty verification purposes, a copy of your dated store receipt must accompany any unit sent in for warranty work.

Service Out of Warranty

Units will be repaired at "out of warranty" service rates when:

- The unit's original warranty has expired.
- A dated store receipt is not supplied.
- The unit has been returned without its serial number.
- The unit has been abused, modified, installed improperly, or had its housing removed.

The minimum out of warranty service fee for your Whistler detector is \$75.00 (U.S.). If you require out of warranty service, please return your unit as outlined in the section "Service Under Warranty" along with a certified check or money order for \$75.00. Payment may also be made by MasterCard, VISA, or American Express; **personal checks are not accepted.**

In the event repairs cannot be covered by the minimum service fee, you will be contacted by a Whistler technical service specialist who will outline options available to you.

25

TROUBLESHOOTING

Your Whistler detector is expertly engineered and designed to exacting quality standards to provide you with reliable, trouble-free operation. If your unit has been correctly installed following the guidelines in this manual, but is not operating optimally, please refer to the troubleshooting guide below.

PROBLEM: No display or audio.

- Check fuse in plug; replace if necessary with a 2 amp, 3AG type.
- Check fuse for lighter socket; replace if necessary.
- Make sure lighter socket is clean.

PROBLEM: Unit alarms when vehicle hits bumps.

- Check for loose lighter socket; tighten and clean.
- Check connections at both ends of the power cord. Substitute another cord to determine if the cord is defective. Return defective cord to the factory.

PROBLEM: Audio alerts are not loud enough.

- Cancel Auto Quiet Mode or City Mode.
- Check audio level setting (see page 8).

If difficulties occur which cannot be solved by information in this Troubleshooting Guide, please call Whistler Customer Service at 1-800-531-0004 or visit our F.A.Q. page at www.whistlergroup.com, before returning your unit for service.

CARE AND MAINTENANCE

During the summer months, avoid prolonged exposure to direct sunlight by removing your unit from the dash when your vehicle is parked for an extended period of time. Do not spray water, cleaners, or polishes directly onto the unit. The spray may penetrate through the openings and damage the unit. Also, do not use any abrasive cleaners on the unit's exterior.

19

WARRANTY INFORMATION

If you elect not to have your unit repaired, it will be returned to you along with your certified check or money order.

Important: When returning your unit for service, be certain to include a daytime telephone number and an email address (if applicable).

Customer Service

If you have questions concerning the operation of your Whistler detector, or require service during or after the warranty period, please call Customer Service at:

1-800-531-0004

Representatives are available to answer your questions Monday - Friday from 8:00 a.m. to 5:00 p.m. (CT) or visit the F.A.Q.'s at www.whistlergroup.com.

SPECIFICATIONS

Radar Frequencies:

10.500 - 10.550 GHz (X Band)
24.050 - 24.250 GHz (K Band)
33.400 - 36.000 GHz (Ka Superwideband)

Operating Temperature Range:

-10°C to +70°C (-41°F to +158°F)

Power Requirements:

Operational 12 to 15 volts DC, 250mA nominal
Vehicle Battery Saver, 30mA nominal.

One or more U.S. patents may apply:
#7,215,276, #8,248,292



26

ARE DETECTORS LEGAL?

In Most States YES.

Laser-Radar detectors are legal in every state (except Virginia and Washington, D.C., which have local regulations restricting the use of radar receivers in any vehicle) when used in automobiles or light trucks (under 10,000 lbs.).

The Federal Highway Administration (FHWA) issued a regulation, effective January, 1994 which prohibits radar and laser detector use in vehicles over 10,000 lbs. Prior to the FHWA regulation, laws existed in New York restricting the use of radar detectors in trucks over 18,000 lbs. and in Illinois in trucks over 26,000 lbs.

FCC INFORMATION

FCC ID: HSXWH20

This device complies with part 15 of the FCC Rules. Operation is subject to the following two conditions:

- (1) this device may not cause harmful interference,
- (2) this device must accept any interference received, including interference that may cause undesired operation.

Important: FCC requirements state that changes or modifications not expressly approved by Whistler could void the user's authority to operate the equipment.

POP™ Mode

POP™ Mode is a feature on some radar guns operating on K and Ka bands. When the gun is in POP™ Mode and activated, a brief burst of energy, less than 1/15 of a second, is transmitted and the vehicle's speed is quickly acquired. A detector without POP™ Mode detection capability cannot respond to this brief transmission.

20

SPECIFICATIONS

POP™ Mode is a trademark of MPH Industries, Inc.

SWS™ is a trademark of Safety Warning System L.C.

Specifications are subject to change without notice

ACCESSORIES

These and other accessories can be ordered directly from Whistler by calling **1-800-531-0004** or visiting our online store at www.whistlergroup.com

Order #	Description	Price
202138b	Visor Bracket	\$9.95
202152	Windshield Bracket Kit	\$9.95
206552	Power Cord (5')	\$14.95
206880	Hardwire Kit (10') (for wiring to fuse box)	\$9.95
206666	Modular* Cord Package (includes coiled and straight cords, and power adapter)	\$17.95
202156	Package of 4 Suction Cups	\$2.95
402080	Non Skid Dash Pad	\$6.95
403774	INTELLICORD®	\$27.95

* Modular: Interconnecting pieces cord and plug. Shipping and handling (per order) \$5.00. Prices are subject to change without notice.

write serial number in the space provided

27

SPEED MONITORING

Laser Facts

It's well documented that many radar guns cannot reliably provide the speed of a targeted vehicle that is traveling in a group of vehicles. In contrast, a laser gun can target a specific vehicle out of a line of traffic and determine its speed. The advantage of laser over radar in terms of target identification is the result of the laser gun's narrow beam. A radar gun's transmission can cover more than a four-lane highway at a distance of 1,000 feet, compared with a laser gun's transmission which covers about 3 feet at the same distance. For best protection, keep these points in mind:

- Because the vehicle's license plate or headlights are the laser gun's primary targets, mounting the Whistler detector on the dashboard can improve laser detection at short range.
- Do not follow closely behind any vehicle you cannot see through. If you can't see past a vehicle ahead of you, chances are your detector can't either.
- The receiving range of your laser detector will not be the same as a radar detector. Laser guns are most often used at short range.

Whistler Laser-Radar detectors receive all current laser guns which operate at a laser wavelength of 905 +/- 50nm.

- Ultra Lyte
- LTI 20-20
- LTI TruSpeed® S
- Laser Ally
- Pro Laser™ I II III
- Laser Atlanta® Stealth Mode

21

OWNER'S MANUAL

CR85

HIGH Performance LASER-RADAR DETECTOR

The Whistler Group Corporate Headquarters

1716 SW Commerce Dr. Ste. 8 • Bentonville, AR 72712
Tel 479.273.6012 • Fax 479.273.2927

Customer Return Center

1412 South 1st St. • Rogers, AR 72756
Customer Service Tel 800.531.0004

www.whistlergroup.com

P/N 260042 03B15 © 2015 The Whistler Group, Inc.



WHISTLER

24

25

26

27

Dear Whistler Customer,

If you have questions concerning the operation of this Whistler product please call:

Customer Service
1-800-531-0004

Monday - Friday • 8:00 am - 5:00 pm CT
or visit our website

www.whistlergroup.com

Please keep the receipt in a safe place. You may register your product online at www.whistlergroup.com. For warranty verification purposes, a copy of your dated store receipt must still accompany any unit sent in for warranty work. If the unit is returned without a dated store receipt, an out of warranty service charge applies. Note: Your warranty period begins at the time of purchase. The warranty is validated only by the dated store receipt! Please record the serial number of the unit in the space provided in the warranty section of the manual.

To fully acquaint yourself with the operation of your Whistler detector and to better understand the differences between detecting radar, laser, and safety radar signals, we recommend reading this entire manual or visiting our F.A.Q. page on our website www.whistlergroup.com

Enjoy your Whistler detector and please drive safely.

Sincerely,
The Whistler Group, Inc.

OPERATION

Power On Self Test & Volume

To turn the unit ON or OFF, gently press the center of the Power/Volume button into the side of the unit. Each time your Whistler detector is turned on, an automatic self-test sequence confirms that the speaker and visual displays are functional.

Audio Level Adjustment

To change the audio level:

- Move Power/Volume button back to increase audio level.
- Move Power/Volume button forward to decrease audio level. As audio level is adjusted, beeps are provided and the display indicates volume level.

Auto Quiet Mode

Auto Quiet mode reduces the selected audio level to level (1) approximately 5 seconds after a radar or safety warning system™ signal is detected. The alert for any new signal within 20 seconds will resume at level (1). Auto Quiet mode does not affect laser alerts.

- Press Quiet (before a signal is detected) to engage Auto Quiet mode.
- Once the Auto Quiet mode is engaged, you may cancel the audio alarm by pressing Quiet.
- Press Quiet (when the unit is not alarming) to cancel Auto Quiet mode.

Quiet Mode

Quiet mode cancels audio during an alert and any new alert within 20 seconds. After 20 seconds of no radar signal detected, the audio alerts are restored.

- Press Quiet to cancel the audio.
- Press Quiet a second time during an alert to restore the standard audio alert pattern.

8

Model Features Summary	3 - 4
Installation	5 - 7
• Mounting Guidelines	5
• Windshield Mounting	5
• Power Connection and Fuse Replacement	6-7
Operation	8 - 17
• Power On, Self Test	8
• Audio Level Adjustment	8
• Auto Quiet Mode	8
• Quiet Mode	8
• City/City 1/ City 2 Mode	9
• Highway Mode	9
• Alert Periscopes	10
• Dim/Dark	10
• Selectable Vehicle Battery Saver Mode	10
• Integrated Real Voice®	11
• Teach/Tutorial Mode	11
• Setting Saver	11
• Feature Engaged Confirmation	11
• Auto Dim	11
• X/K Ka Filter Mode	12
• Ka Max Mode	12
• Traffic Flow Signal Rejection (TFSR)	12
• Option Select Mode	12-13
• Stay Alert Feature	14
• Alert Priority	15
• Safety Warning System™	15
• Intellicord® Ready	15
• Reset Features	16
• Ka RSID (patented)	17
• LSID	17
POP™ Mode Alerts	18
Laser/Radar Alerts	18
• Speed Radar Audio/Visual Alerts	18
• Laser Audio/Visual Alerts	18
• Pulse Protection®	18
Troubleshooting Guide	19
Care and Maintenance	19
Are Detectors Legal?	20
FCC Information	20
• POP™ Mode	20
Speed Monitoring	21 - 23
• Laser Facts/Tips	21 - 22
• Radar Facts	22
• Other Speed Detection Systems	22 - 23
• Radar Detector Detector	23
Warranty Information	23 - 26
Specifications	26
Accessories	27

WHISTLER FEATURES



Features

- Radar Signature ID (RSID)
- Laser Signature ID (LSID)
- 3 Filter Modes
- Ka Max Mode
- Total Band Protection™
- OLED Text Display
- Detects POP™ Mode
- 360° Maxx Coverage
- Real Voice®
- 3 City Modes/Highway Mode
- Quiet/Auto Quiet Mode
- Dim/Dark Mode
- Auto Dim™
- Stay Alert™
- Setting Saver
- Selectable Vehicle Battery Saver™
- Safety Warning System™
- Alert Priority
- Alert Periscopes
- Traffic Flow Signal Rejection

3

FEATURE DESCRIPTIONS

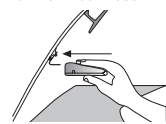
1. **Bracket Release Button** – provides quick and easy release of the mounting bracket.
2. **Speaker** – provides distinct audio warnings for X, K, Ka band radar, safety warning system, and laser.
3. **Mounting Bracket Location** – slot holds mounting bracket firmly.
4. **Radar Antenna** – compact, high-efficiency antenna receives radar signals.
5. **Front Laser** – high gain optical lens provides increased sensitivity and field of view for leading-edge laser detection.
6. **Rear Laser** – an integrated optical waveguide provides superior detection of laser signals transmitted from behind.
7. **City Button** - reduces the annoyance of false alerts typically encountered in urban driving areas.
8. **Quiet Button** - pressing QUIET before a signal is detected engages Auto Quiet Mode which automatically reduces the audio level after the initial warning to a low audio level setting. Pressing QUIET during a radar/laser encounter silences audio alerts, while allowing visual alerts to keep you informed.
9. **Power / Volume Control** – gently press this button in to turn the unit on/off. Move back or forward to adjust the audio level.
10. **Dim / Dark** - engages Dim/Dark modes.
11. **Menu Button** - enters Option Select Mode.
12. **Text Display** – provides distinct visual confirmation of signals detected, signal strength, and indicates engaged modes of operation.
13. **Alert Periscopes** - provide an additional attention getting visual alert.
14. **Power Jack** – Provides connection for the power cord.

4

INSTALLATION

Mounting Guidelines

- Mount the unit as low as possible near the center of the windshield.
- Do not mount the unit behind wipers, ornaments, mirrored sunscreens, etc. These obstructions have metal surfaces which can affect radar and laser signals and reduce critical warning time. (Regular tinted glass does not affect reception).
- Some windshields have an Instadecar™ or Electriclear™ type coating, which affect radar signals. Consult your dealer or the owner's manual supplied with your vehicle to determine if your windshield has this coating.
- Avoid placing the unit in direct contact with the windshield.
- To reduce the possibility of theft, conceal the unit when not in use.

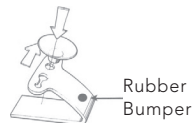


Windshield Mounting

IMPORTANT: Make sure the unit is level

Windshield Mounting

- Install the two suction cups and rubber bumper onto the bracket by fitting them into their holes.
- Press the suction cups onto the windshield at the location you have chosen.



Rubber Bumper

5

OPERATION

Integrated Real Voice®

When selected, Real Voice® will be used to articulate the following:

1. Band Identification
2. Safety Warning System messages
3. Feature Selection

Note: In certain cases, the voice message does not replicate the text message.

Teach/Tutorial Mode

Provides simulated alerts for each type of signal.

- Press City and Quiet buttons simultaneously
- Display Shows: **TEACH**
- Press Dark button to exit.

Setting Saver

Setting Saver stores your personalized settings so that when the detector is turned off and then on again, you do not have to re-enter them.

Feature Engaged Confirmation

Each time a button is pressed, one beep confirms feature "on", two beeps confirm feature "off".

Auto Dim

The Auto Dim feature automatically switches the illumination of the text display between the bright and dim settings according to varying light conditions so that the text display will always be easy to read. To manually override the auto dim feature, use the dark button on the unit. Enter Option Select Mode to turn off the auto dim feature.

11

INSTALLATION

Important: Some newer cars have a plastic safety coating on the inside of the windshield. The windshield bracket may leave permanent marks on this type of surface. To find out if your vehicle has this type of windshield, check the vehicle's owner's manual or ask your dealer. We recommend that you do not leave the suction cup bracket on the window in direct sunlight. If the detector is removed, this may cause blistering of the dash in some vehicles.

- Slide the detector onto the bracket until it locks into place.
- If necessary, the unit may be leveled by bending the windshield bracket. Press the bracket release button and remove the detector before bending.

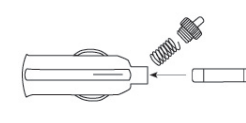
Power Cord Connection

- Plug the small end of the power cord into the unit's power jack.
- Plug the large end into the vehicle's cigarette lighter socket.

Note: Cord fits tightly into detector. When installing the cord, expect some resistance.

Fuse Replacement

The lighter socket plug is equipped with a replaceable 2 amp, 3AG fuse located behind the silver tip. To replace the fuse, carefully unscrew the tip of the plug.



6

OPERATION

NOTE: Press and hold Menu button to exit Option Select Mode.

Feature	Display Shows	To Change: D=Dark Q=Quiet	Option
QUIET	S1: Quiet	D or Q to select	Remote Control of Dim, City, Quiet Power Functions
POWER	S2: Power	D or Q to select	Remote Control of Dim, City, Quiet Power Functions
AUTO DIM	ADIM:ON	D = ON Q = OFF	Auto Dim On Auto Dim Off
TOUR	TOUR 3	D or Q to select	Tone 1, 2, 3 (3 Different Tone Patterns)
TEST	TEST ON	D = ON Q = OFF	ON = X, K, Ka Audio Tones OFF = One Beep During Power Up
X BAND	X = ON	D = ON Q = OFF	X Band ON X Band OFF
K BAND	K = ON	D = ON Q = OFF	K Band ON K Band OFF
Ka BAND	Ka-MAXID	D or Q to select	Ka Band (RSID,NORM, OFF,MAX,MAXID)
LASER	LSR NORM	D or Q to select	LASER (NORM,OFF,LSID)
LASER AREA 1	.02-.09 Y	D or Q to select	Laser Area 1 ON Laser Area 1 OFF
LASER AREA 2	2.6-3.2 Y	D or Q to select	Laser Area 2 ON Laser Area 2 OFF
LASER AREA 3	3.8-4.2 Y	D or Q to select	Laser Area 3 ON Laser Area 3 OFF
SWS™	SWS OFF	D = ON Q = OFF	Turn SWS™ ON Turn SWS™ OFF
VOICE®	VOICE ON	D = ON Q = OFF	Real VOICE® Engaged Real VOICE® Disengaged
POP™	POP OFF	D = ON Q = OFF	POP ON POP OFF
BATTERY SAVER	B SVR ON	D = ON Q = OFF	Battery Saver ON Battery Saver OFF

13

INSTALLATION

IMPORTANT: Unscrew slowly. The tip contains a spring which may fly out when disassembling. Insert the new fuse with the spring and screw on the tip. With use, the screw cap on the plug may loosen. Retighten it occasionally.

Installing the Hardwire Kit

The "U" type connector must be secured to a metal surface that is electrically connected to the battery ground (negative) terminal. The spade type connector can connect to either line 12 volts or switched 12 volts at your fuse panel accessory port. If no port is available, cut off the spade terminal, expose 1/4 to 1/2 inch of wire, and splice into a source of 12 volt power.

Fuse Replacement - Hardwire Kit

The inline fuse holder on the power cable is equipped with a replaceable 2 amp, 3AG fuse located inside the fuse holder. To replace the fuse, carefully twist the holder to open it to gain access to the fuse.

OPERATION

Option Select Mode (cont'd)

X/K FILTER	XKFLTR 1	D or Q to select	Filter 1, Filter 2, Filter 3
Ka FILTER	KaFLTR 1	D or Q to select	Filter 1, Filter 2, Filter 3
ALERT PERISCOPES	LEDBLNK	D or Q to select	Alert Periscopes ON (ON, OFF or Blinking)
TFSR	TFSR OFF	D = ON Q = OFF	TFSR = ON TFSR = OFF (default)

Stay Alert Feature

The Stay Alert Feature is designed to test a driver's alertness. To engage (when the unit is not alarming):

- Press and hold the City button for approximately 2 seconds. Release the button during or immediately after the alert is given.

DISPLAY SHOWS: **RU ALERT**

Within 30-60 seconds, two beeps are sounded; to show alertness, the driver must press either the City, Menu, or Quiet buttons within 3-5 seconds. If a button is pressed within 3-5 seconds, the cycle is repeated. If a button is not pressed within 3-5 seconds, an alarm sounds.

DISPLAY SHOWS: **GET REST**

- Press the Dark button to exit the Stay Alert feature.

WARNING!!! Stay Alert is NOT intended as a substitute for adequate rest. You should NOT operate a vehicle if you are drowsy. During extended periods of vehicle operation, you should take frequent breaks. Improper reliance on the Stay Alert feature may result in vehicle damage, personal injury or death.

NEVER OPERATE A VEHICLE IF YOU ARE DROWSY!

14