

GRAVITY
PERFECTED™

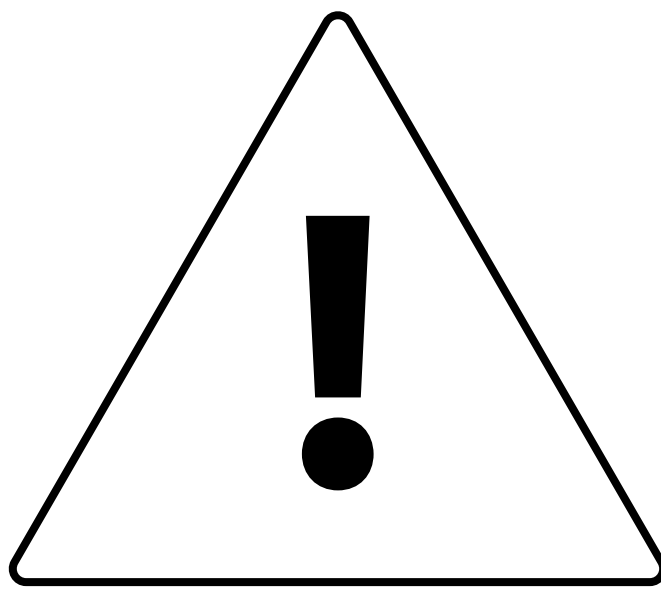


Stündenglass®

modül™

Modül™ Operation Instructions v1.0.2

Compatible with
STÜNDENGLASS® GRAVITY INFUSER
& STÜNDENGLASS® KOMPACT GRAVITY INFUSER



**CAUTION:
DEVICE IS HOT DURING AND
AFTER USE. WAIT UNTIL DEVICE IS
COMPLETELY COOL BEFORE
CLEANING OR HANDLING.**

Getting Started

1



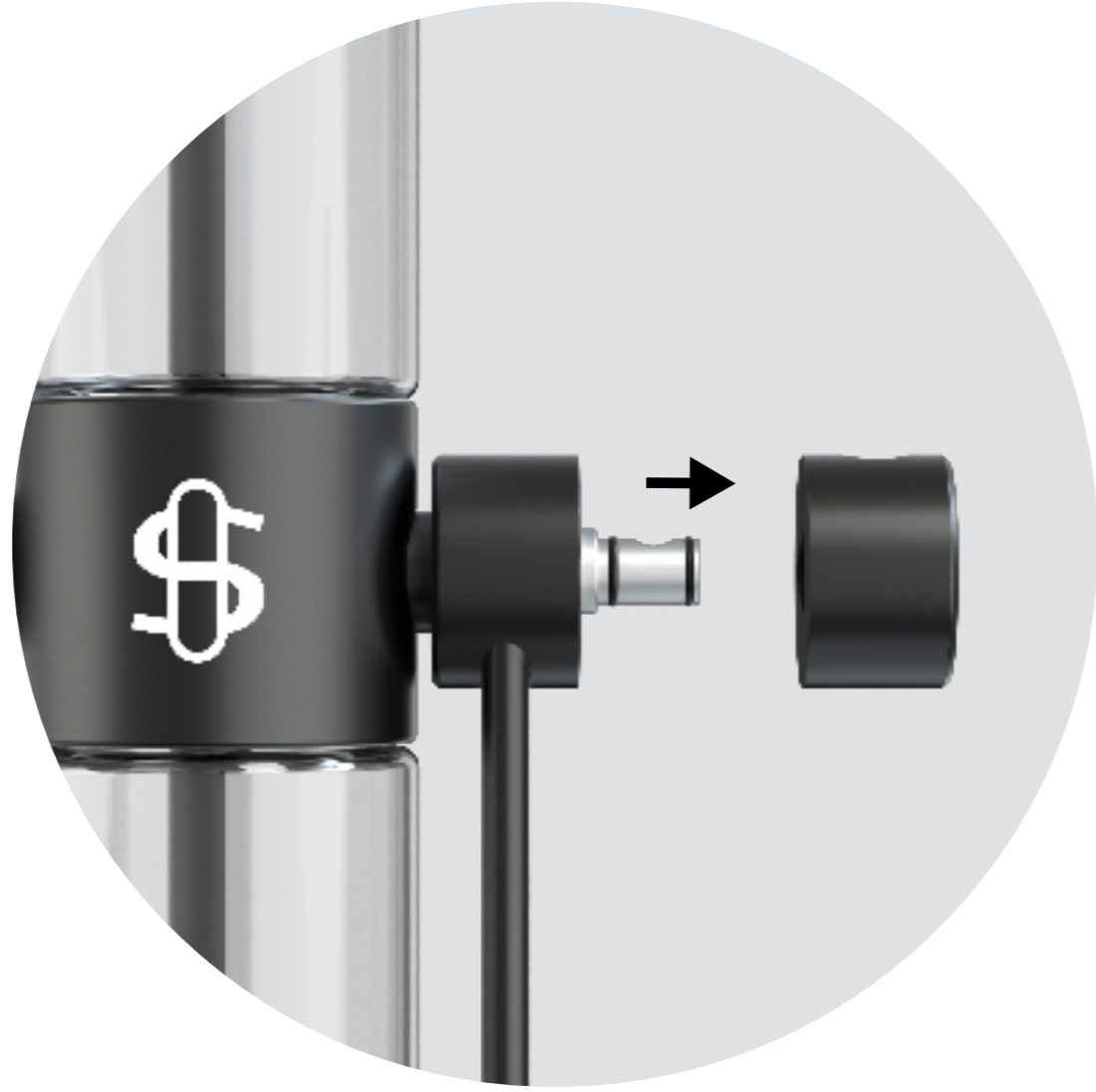
Register device with
serial number

2



Fully charge the Modul™ via
USB-C charging port

3



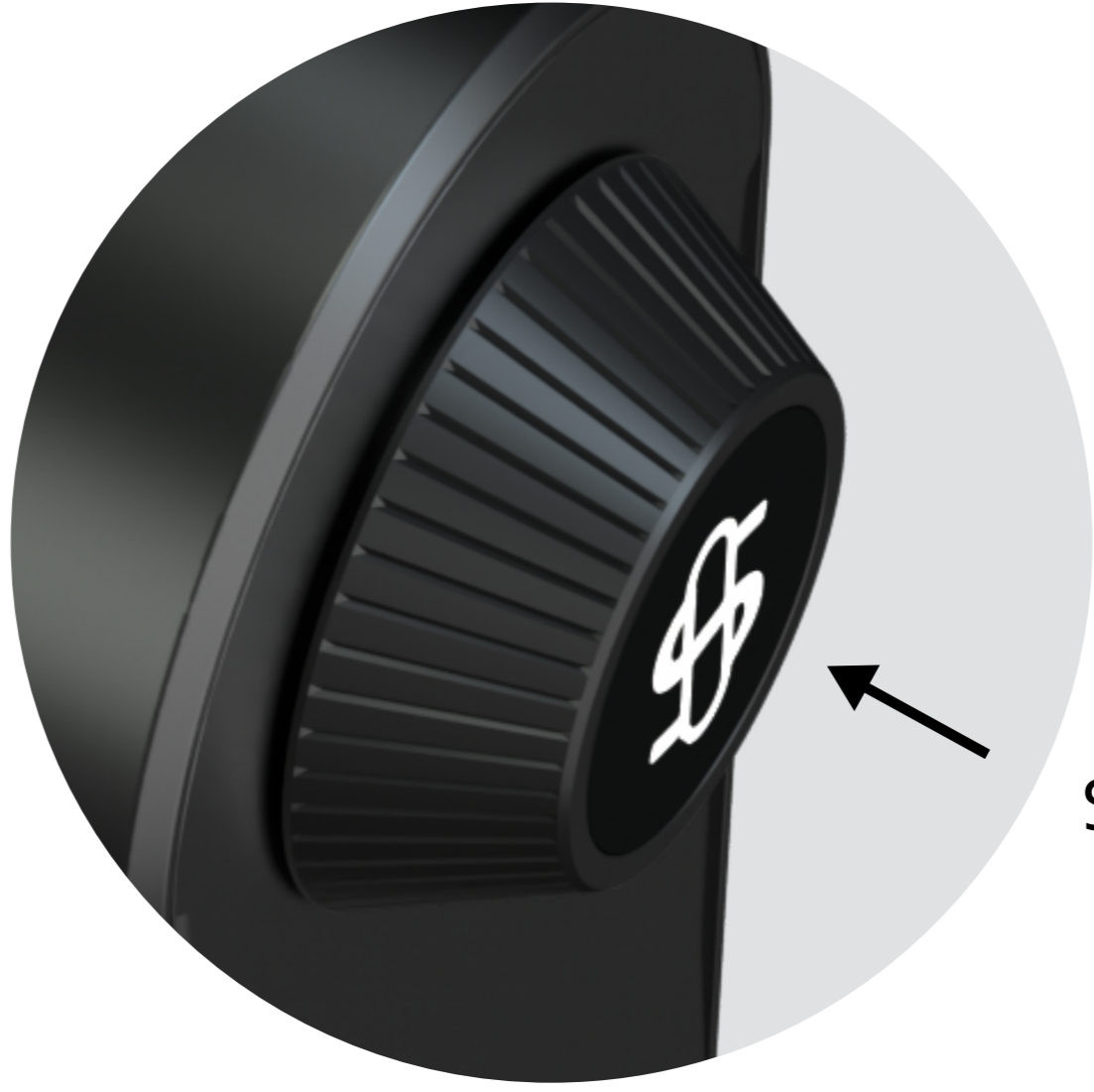
Disconnect the magnetic elbow
from your Stündenglass
Gravity Infuser

4



Connect the Modul™ to your
Stündenglass® Gravity Infuser via
magnetic connection shown

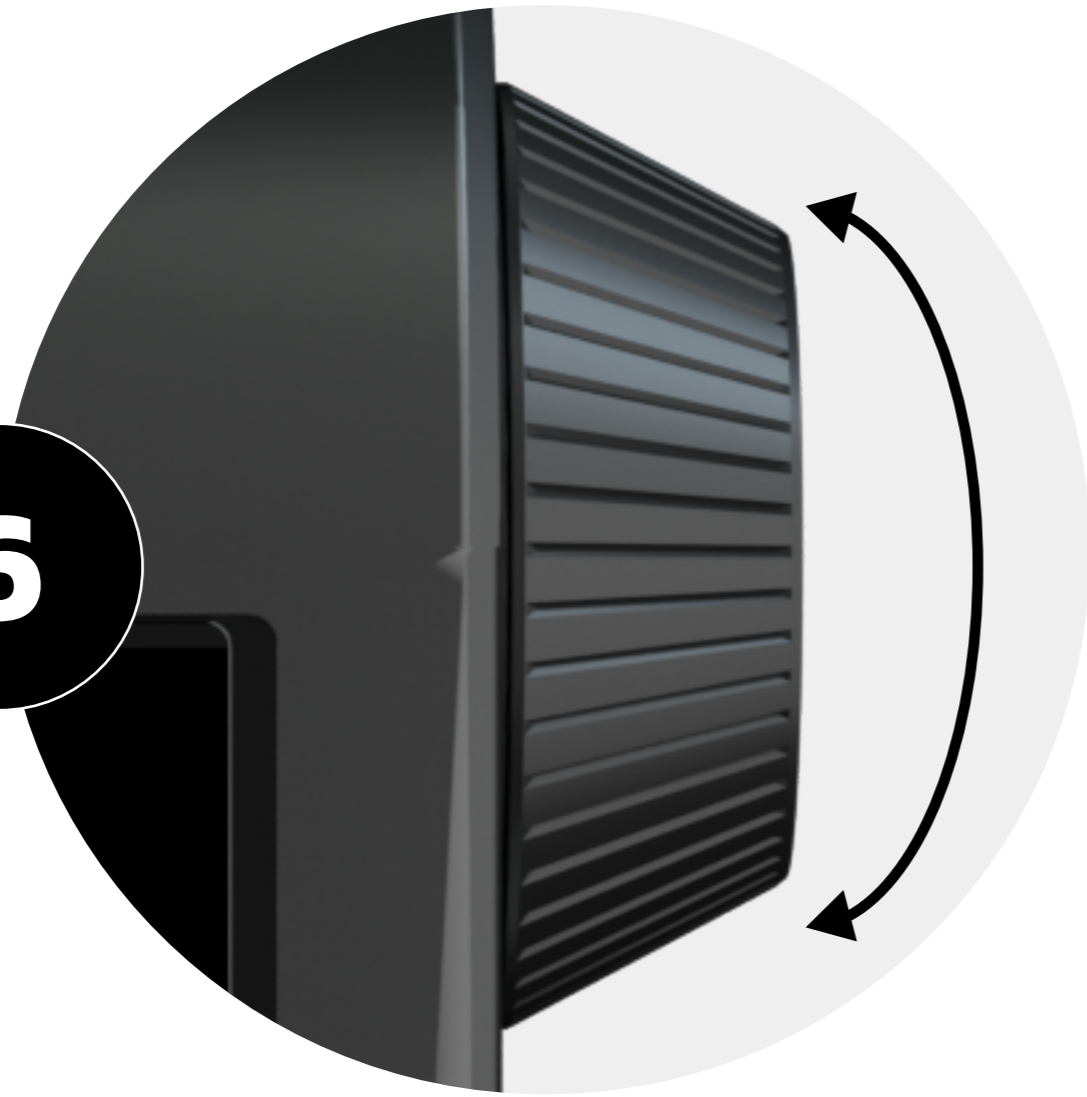
5



Select

Press dial in for
3 seconds to power on

6

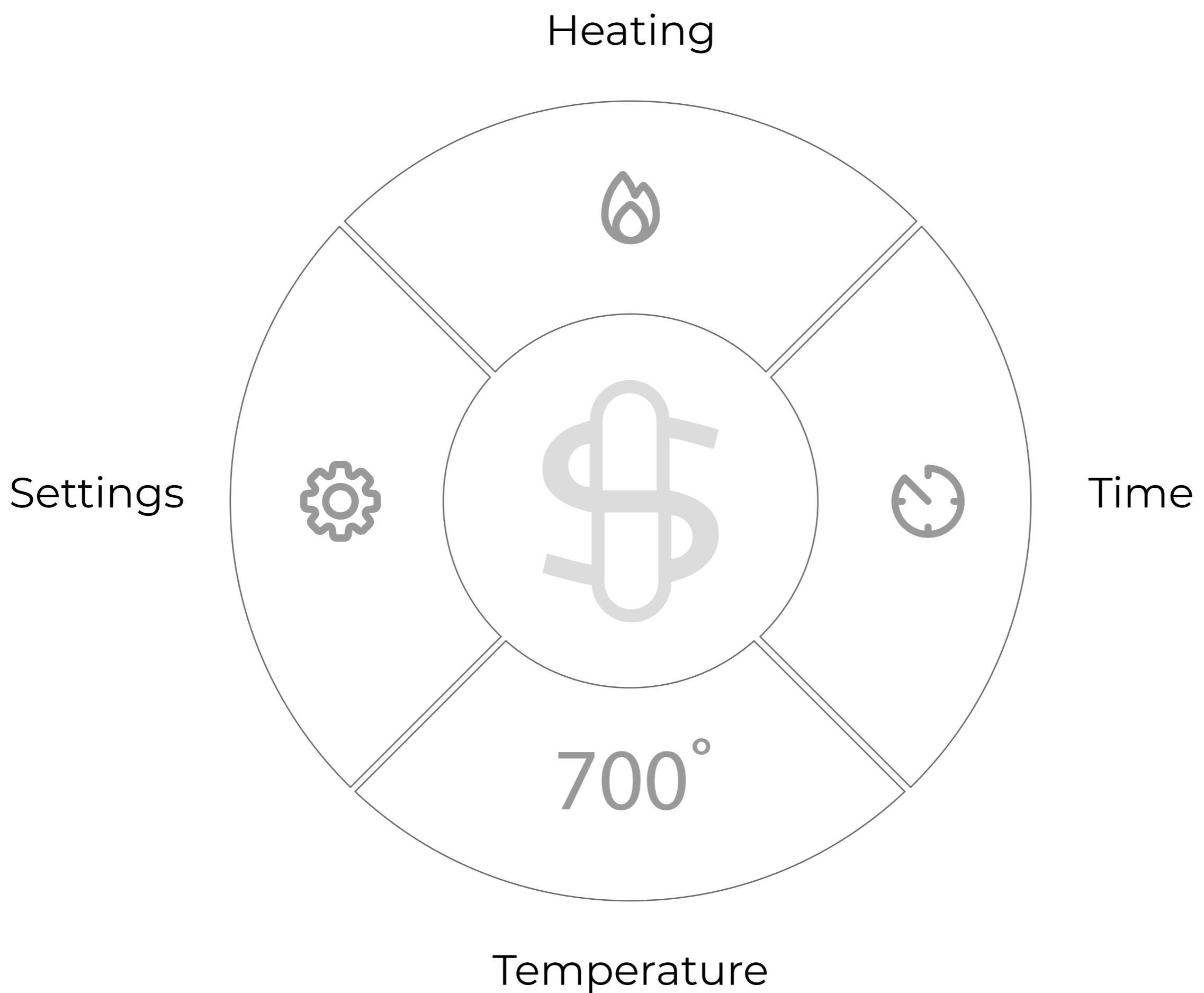


Spin dial to
select function



Selected tab will
be highlighted

Home Screen



Heating

- ☑ **Select** to begin heating.
Once a session is started, the settings are locked.
- ➔ **Press dial** to cancel session.

Time

- ☑ **Select** to adjust session time.
- ↻ **Spin dial** to adjust time.
- ➔ **Press dial** to select session time.

Temperature

- ☑ **Select** to adjust session temperature.
- ↻ **Spin dial** to adjust temperature.
- ➔ **Press dial** to confirm temperature.

Settings

- ☑ **Select** to open settings menu.
- ↻ **Spin dial** to navigate menu.
- ➔ **Press dial** to select menu option.

Settings Menu

Home



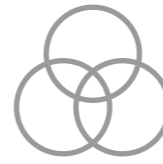
Temperature



Brightness



Color



Lock



Settings

Home takes you back to home screen.

Temperature toggle F°/C° here.

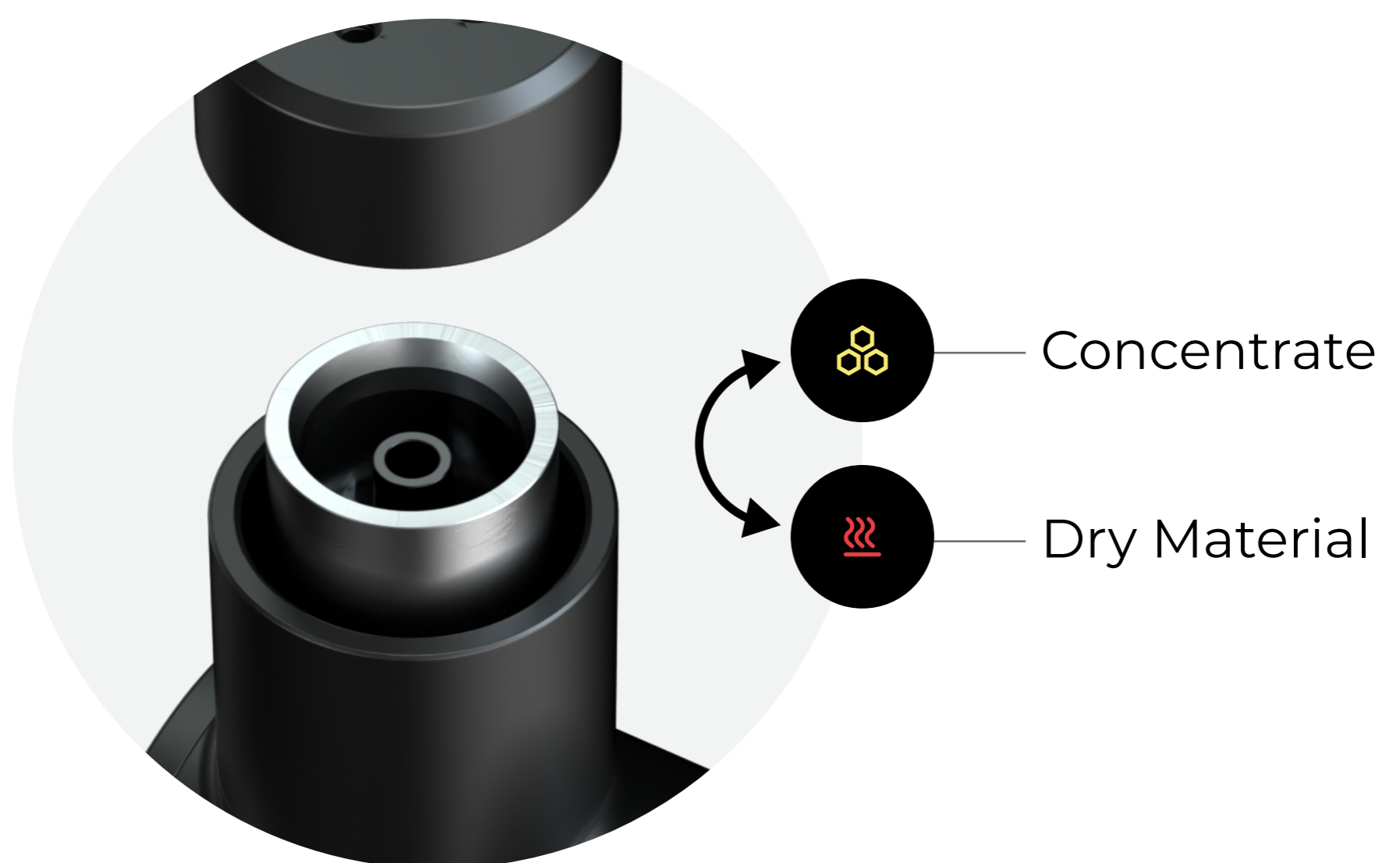
Brightness change between bright and dark modes.

Color select color theme.

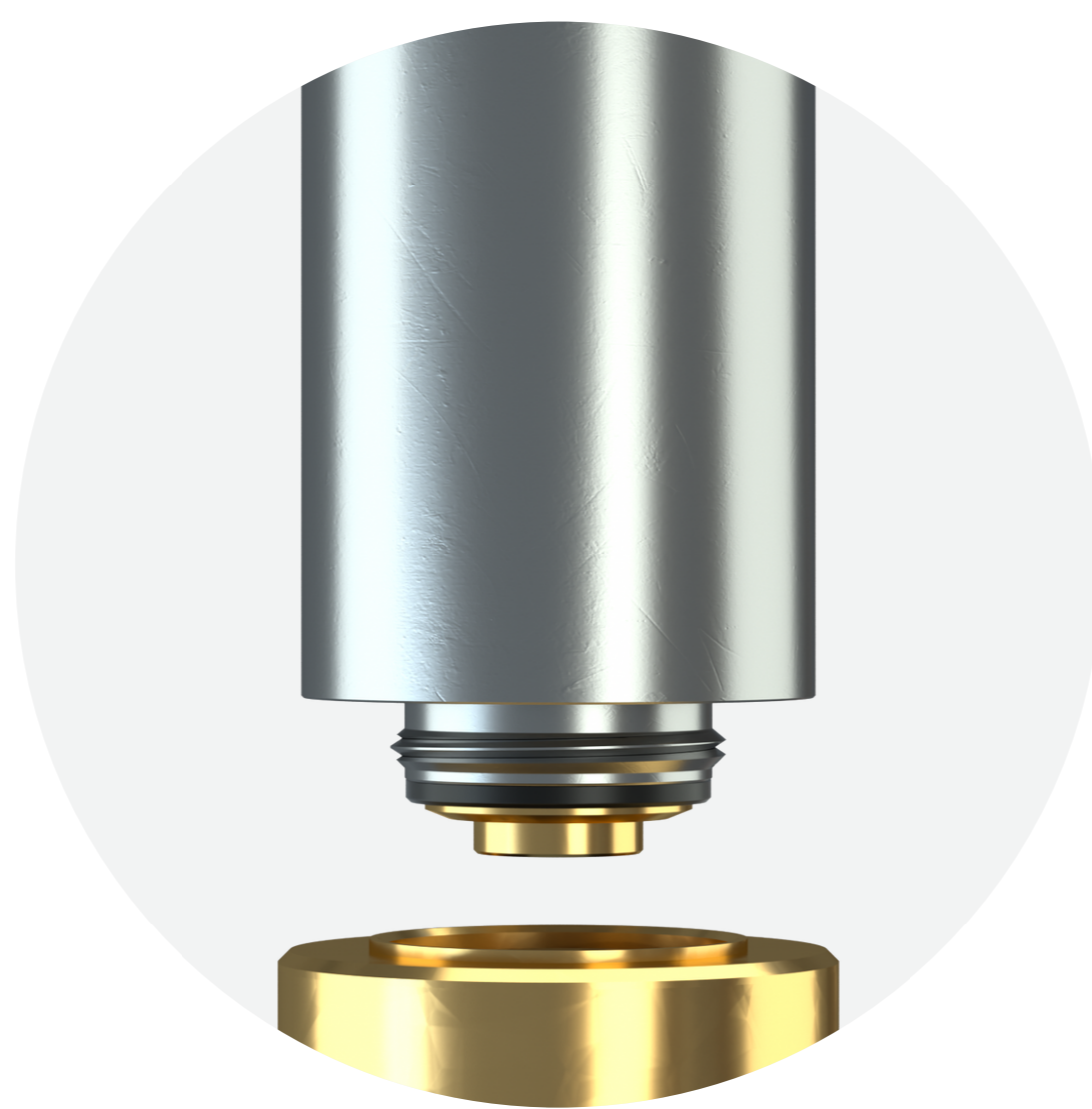
Lock lock device on next power on.

In the lock menu, select the lock icon and power down the Modul. The next time you want to power up the Modul, long press the dial button until the circle is completely filled. Then release and long press again for 3 seconds to power up the Modul.

Tanks



Modul will automatically recognize tank type



Ensure the threading on the tank and adapter is clean

NOTE: Ensure the bottom of the adapter and the inside of the device where the tank connects is clean.

Tank Types



Concentrate

- Full Quartz chamber with custom-stamped stainless-steel heating element.
- Temperature settings between 482°/250° to 842°/450°.
- Heat up time between 15 to 45 seconds.

Cleaning - Wait until device is completely cooled after the end of a session to fully wipe down the quartz chamber with a cotton swab. Isopropyl alcohol can be used.



Dry Material (tank sold separately)

- Full Quartz chamber with custom-stamped stainless-steel heating element.
- Up to 80 watts of power.
- Heat up time between 15 to 45 seconds.
- No exposed coil.

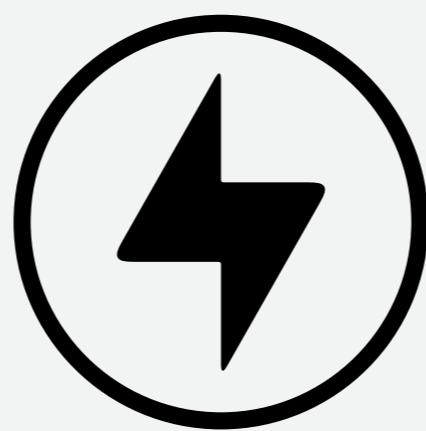
Cleaning - Wait until device is completely cooled after the end of a session to empty the chamber into an ashtray or bin using the included loading/pick too.

Carb Cap + Battery



Carb Cap

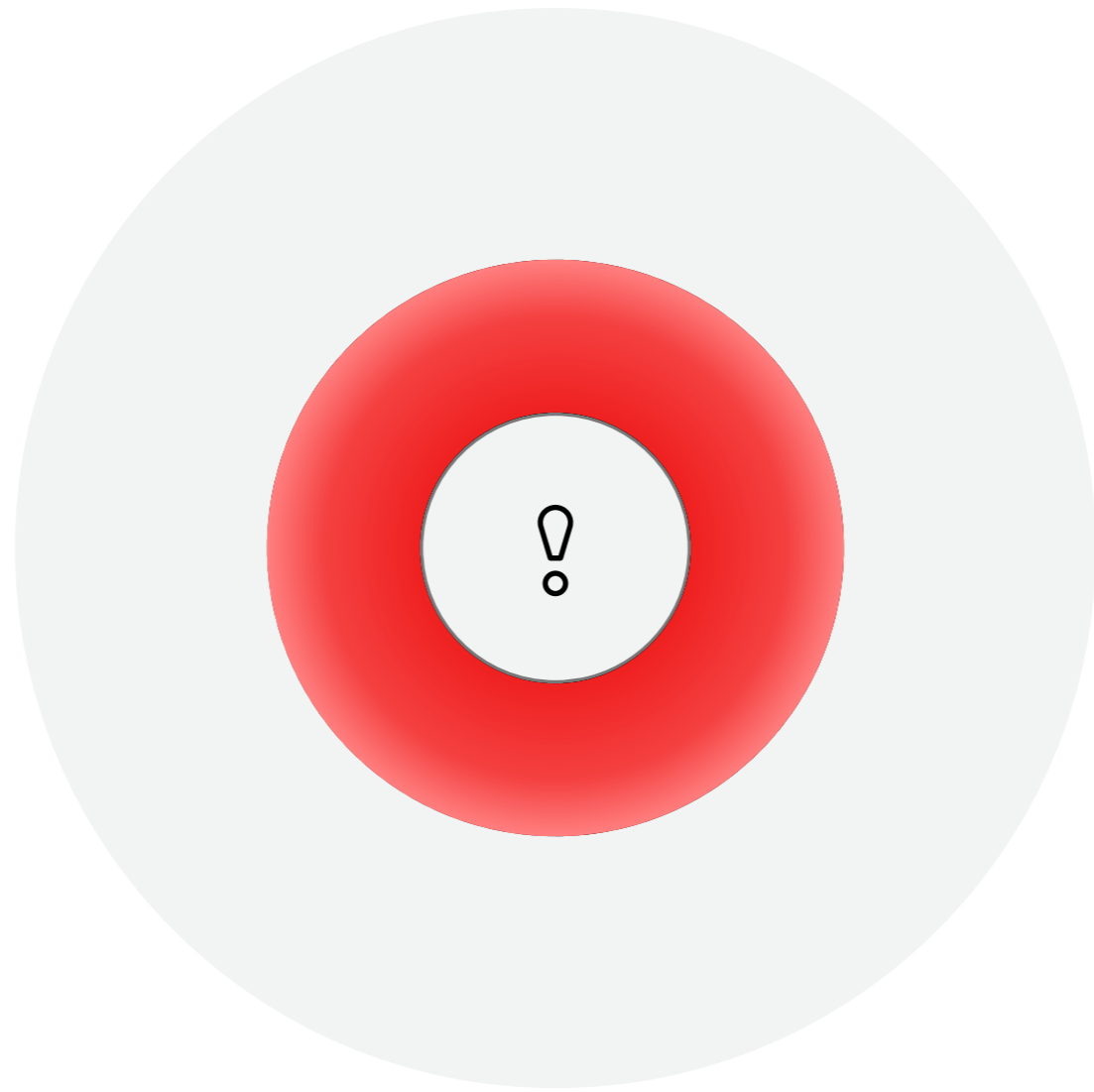
Integrated stainless steel wax tool with two placement settings. Magnetic, anodized aluminum carb cap with dual ceramic airflow insert.



6000mAh Li-ion battery

Use only included cable for charging. Charge Modul when the battery indicator is low. Charging at 3A will take about 2 hours. Up to 50 sessions per charge.

TROUBLE SHOOTING



Error

Allow the device to fully cool down before checking the connection. If there is a connection or other error, the screen will display the red circle with a “!”. Please check tank connections and try again. The tank icon should be visible on the home screen, if it’s not, there is a connection issue.

Customerservice@stundenglass.com

Stündenglass®

© 2024 Stündenglass Technologies, LLC
MODÜL™

 **RoHS CE**

Designed in Los Angeles
Made in PRC