



Essential Validation Services



Sample:

Client: | 21 Drops
Sample: | Ylang Ylang (Cananga odorata)
Batch # | 0614/1
CAS Number | 8006-81-3
Type: | Essential Oil

Conclusion:

- No adulterants, diluents, or contaminants were detected via this method.



X

A handwritten signature in black ink, appearing to read 'Adam Christen', is written over a horizontal line.

Validated By:

Essential Validation Services

747 SW 2nd Ave, Gainesville, FL 32601

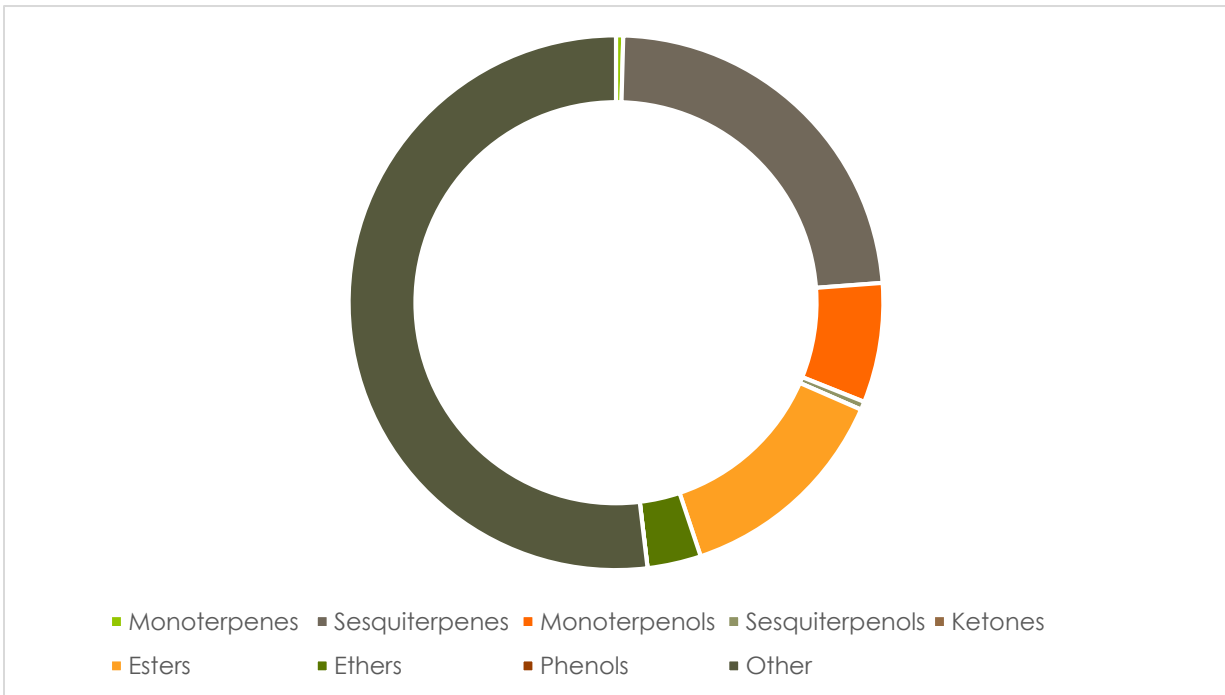
Phone: 317-361-5044 E-mail: Adam@essentialvalidationservices.com

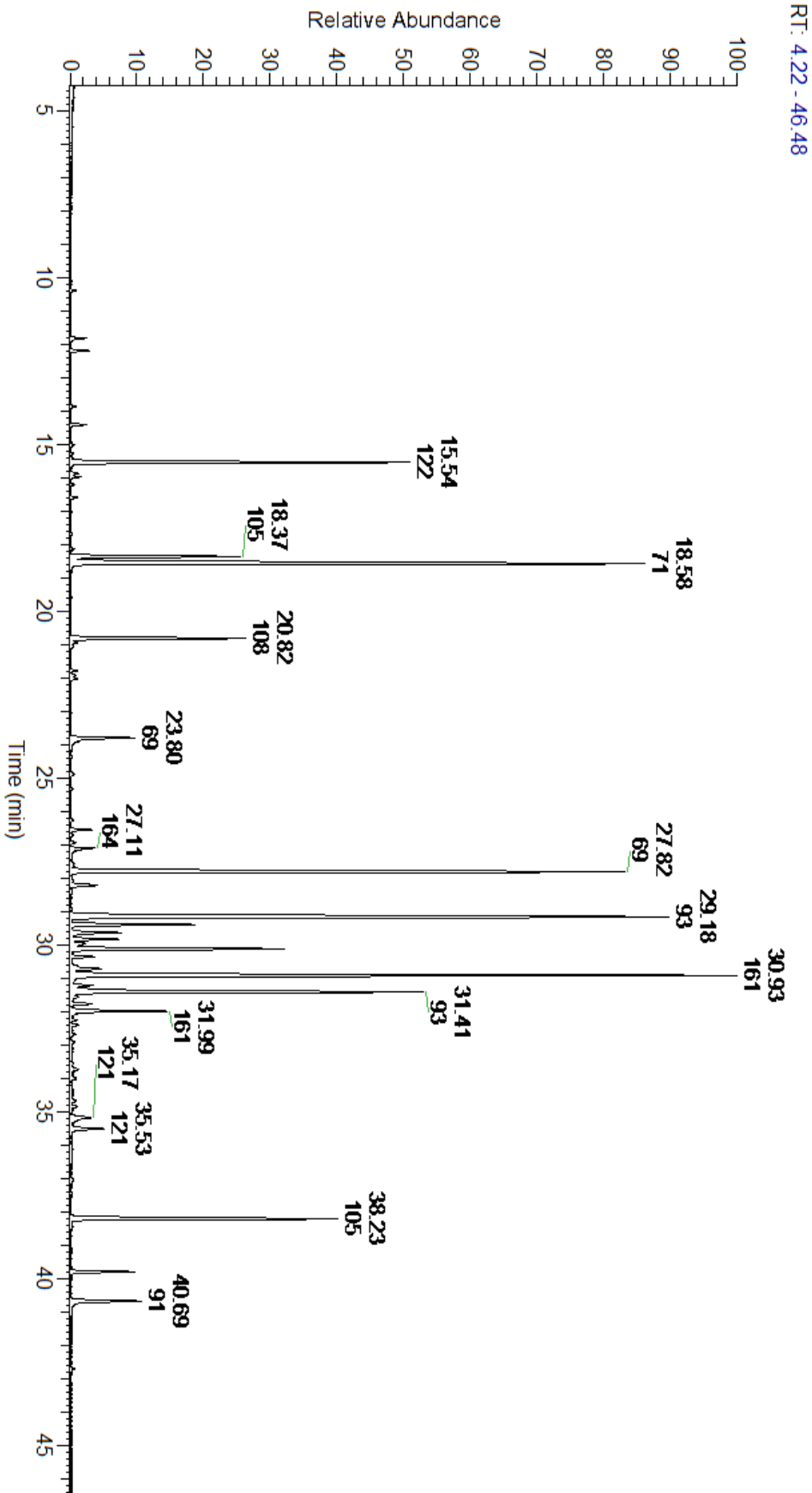
Summary of Analyses

A fresh sample of Ylang Ylang (Cananga odorata) Essential Oil (10 uL in .5to.5 mL Hexane + ETOH) was prepared and analyzed via split injection GC/EI-MS.

Main Compounds	Percentages
beta-Caryophyllene	15.02%
Linalool	13.48%
Germacrene D	13.43%
Geranyl acetate	11.48%
(E,E)-alpha-Farnesene	7.10%
para-Methyl anisole	6.49%
Benzyl benzoate	5.47%
alpha-Humulene	4.21%
Benzyl acetate	3.24%
Methyl benzoate	3.16%
trans-alpha-Bergamotene	2.26%
delta-Cadinene	1.86%
Benzyl salicylate	1.44%

Monoterpenes	Sesquiterpenes	Monoterpenols	Sesquiterpenols	Ketones
0.89%	47.79%	14.78%	1.03%	0.00%
Esters	Ethers	Aldehydes	Phenols	Other
27.22%	6.63%	0.00%	0.61%	1.05%





Total Percentage	98.95%				
Peak Number	RT	Area %	Compound Name	RI	Chemical Family
1	10.38	0.06%	2-Methylbutyl acetate	868.50	Aliphatic Ester
2	11.82	0.24%	3-Methyl-3-buten-1-yl acetate	910.00	Aliphatic Ester
3	12.19	0.30%	alpha-Pinene	936.10	Monoterpene
4	13.86	0.07%	Sabinene	973.00	Monoterpene
5	14.41	0.23%	Myrcene	989.20	Monoterpene
6	15.02	0.03%	(Z)-3-Hexenyl acetate	1004.00	Aliphatic Ester
7	15.39	0.01%	alpha-Terpinene	1014.00	Monoterpene
8	15.54	6.49%	para-Methyl anisole	1015.00	Monoterpene Ether
9	15.87	0.12%	Limonene	1029.50	Monoterpene
10	15.97	0.14%	1,8-Cineole	1031.80	Monoterpene Ether
11	16.19	0.04%	(Z)-beta-Ocimene	1037.80	Monoterpene
12	16.60	0.09%	(E)-beta-Ocimene	1047.70	Monoterpene
13	18.13	0.03%	Terpinolene	1092.10	Monoterpene
14	18.37	3.16%	Methyl benzoate	1096.10	Phenolic Ester
15	18.58	13.48%	Linalool	1099.00	Monoterpenol
16	20.82	3.24%	Benzyl acetate	1161.25	Phenolic Ester
17	20.94	0.11%	p-Cresyl acetate	1168.50	Monoterpene Ester
18	21.06	0.02%	Ethyl benzoate	1169.00	Phenolic Ester
19	21.79	0.08%	alpha-Terpineol	1191.71	Monoterpenol
20	21.91	0.06%	Methyl salicylate	1192.29	Phenolic Ester
21	22.02	0.12%	Methyl chavicol	1193.40	Phenylpropanoid
22	23.80	1.22%	Geraniol	1255.29	Monoterpenol
23	24.90	0.04%	(E)-Anethole	1283.00	Phenylpropanoid
24	26.55	0.33%	delta-Elemene	1335.83	Sesquiterpene
25	26.93	0.06%	alpha-Cubebene	1355.71	Sesquiterpene
26	27.11	0.45%	Eugenol	1365.89	Phenylpropanoid
27	27.82	11.48%	Geranyl acetate	1378.50	Monoterpene Ester
28	28.23	0.57%	beta-Elemene	1389.20	Sesquiterpene
29	29.18	15.02%	beta-Caryophyllene	1427.14	Sesquiterpene
30	29.40	2.26%	trans-alpha-Bergamotene	1435.00	Sesquiterpene
31	29.64	0.90%	(E)-Cinnamyl acetate	1443.50	Phenylpropanoid Ester
32	29.84	0.86%	beta-Copaene	1445.00	Sesquiterpene
33	29.97	0.30%	(E)-beta-Farnesene	1456.29	Sesquiterpene
34	30.13	4.21%	alpha-Humulene	1461.43	Sesquiterpene
35	30.37	0.37%	cis-Muurola-4(14),5-diene	1465.75	Sesquiterpene
36	30.73	0.60%	gamma-Murolene	1478.86	Sesquiterpene
37	30.93	13.43%	Germacrene D	1484.71	Sesquiterpene
38	31.22	0.32%	alpha-Selinene	1492.50	Sesquiterpene
39	31.41	7.10%	(E,E)-alpha-Farnesene	1508.14	Sesquiterpene
40	31.77	0.34%	gamma-Cadinene	1515.29	Sesquiterpene
41	31.99	1.86%	delta-Cadinene	1524.14	Sesquiterpene
42	32.09	0.06%	trans-Calamenene	1529.50	Sesquiterpene

