



Essential Validation Services



Sample:

Client: | 21 Drops
Sample: | Orange, Sweet (Citrus sinensis)
Batch # | ORGNO0717SO
CAS Number | 8028-48-6
Type: | Essential Oil

Conclusion:

- No adulterants, diluents, or contaminants were detected via this method.



X 

Validated By:

Essential Validation Services

747 SW 2nd Ave, Gainesville, FL 32601

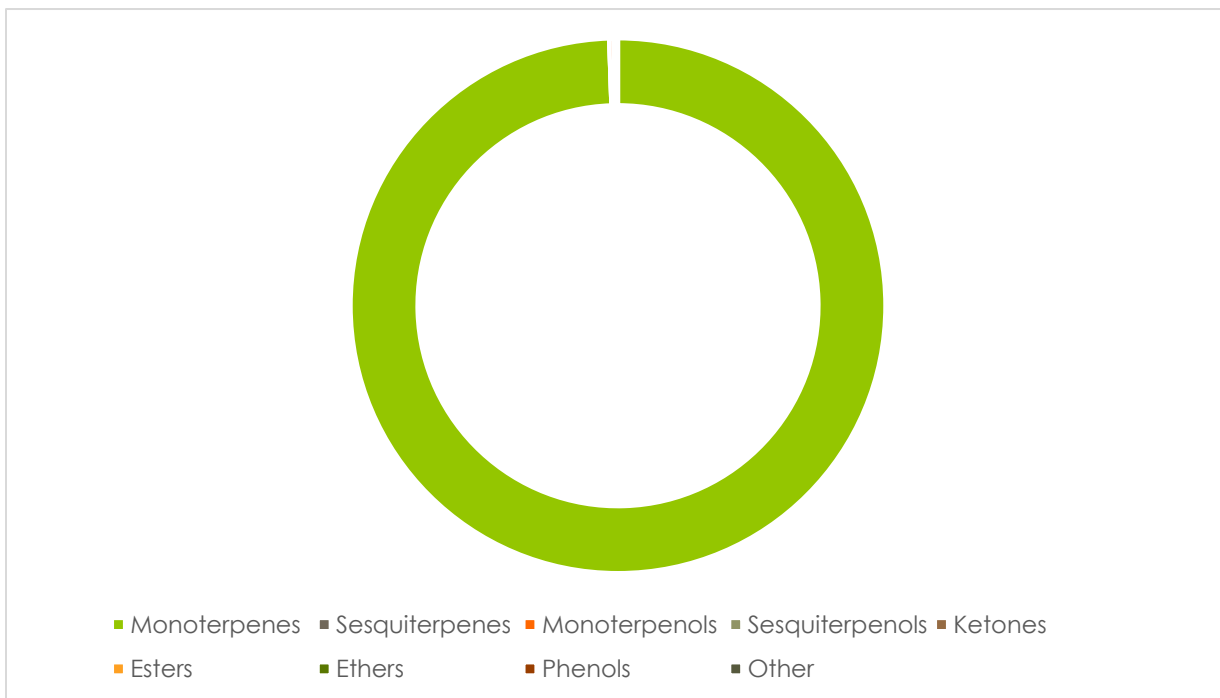
Phone: 317-361-5044 E-mail: Adam@essentialvalidationservices.com

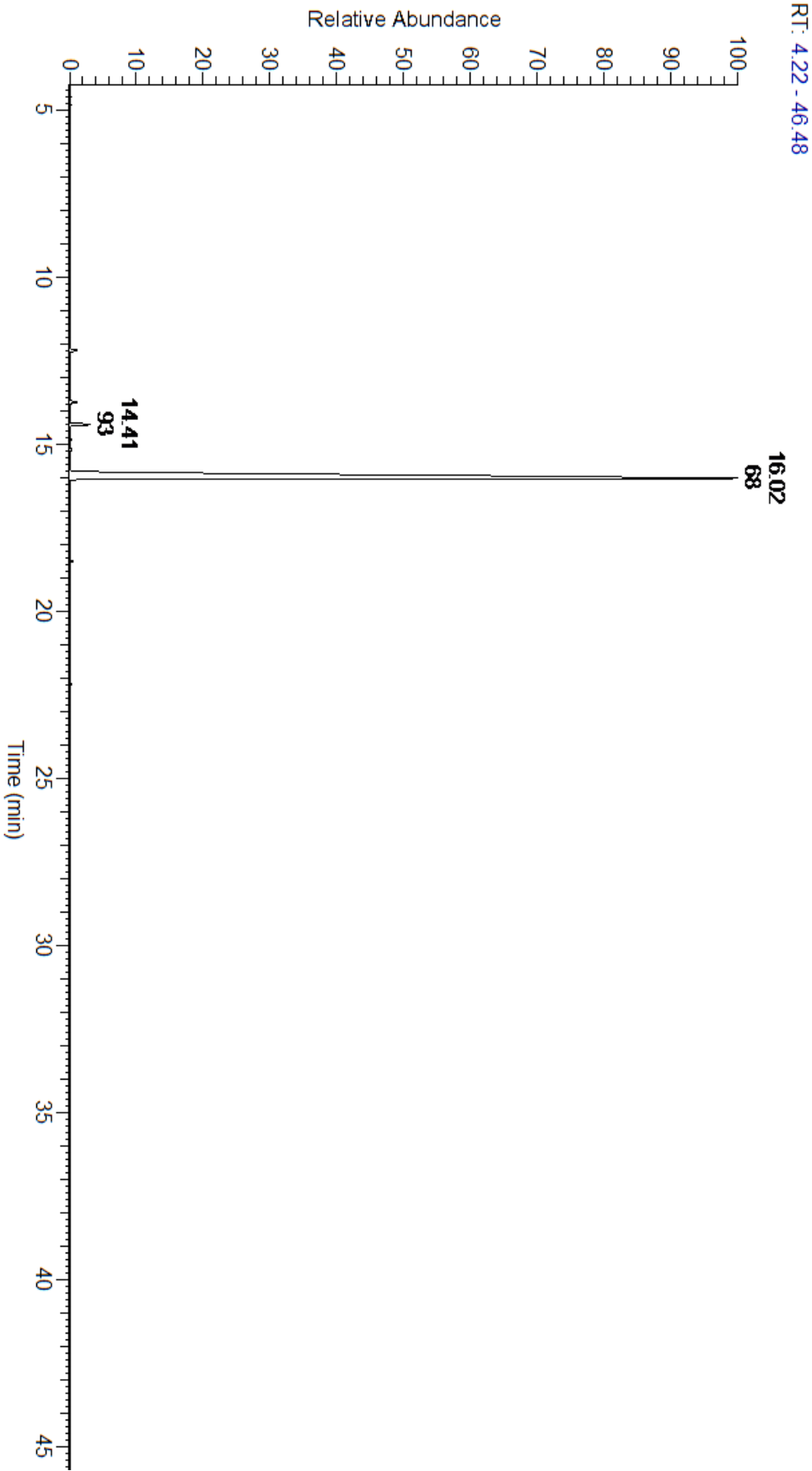
Summary of Analyses

A fresh sample of Orange (Citrus sinensis) Essential Oil (10 uL in .5to.5 mL Hexane + ETOH) was prepared and analyzed via split injection GC/EI-MS.

Main Compounds	Percentages
Limonene	96.77%
Myrcene	1.49%
alpha-Pinene	0.53%
Sabinene	0.47%
Linalool	0.23%

Monoterpenes	Sesquiterpenes	Monoterpenols	Sesquiterpenols	Ketones
99.47%	0.00%	0.27%	0.00%	0.01%
Esters	Ethers	Aldehydes	Phenols	Other
0.00%	0.06%	0.19%	0.00%	0.00%





ESSENTIAL VALIDATION SERVICES | 747 SW 2ND AVE GAINESVILLE, FLORIDA 32601 | 317-361-5044

Total Percentage	100.00%				
Peak Number	RT	Area %	Compound Name	RI	Chemical Family
1	12.19	0.53%	alpha-Pinene	936.10	Monoterpene
2	13.74	0.47%	Sabinene	973.00	Monoterpene
3	13.86	0.01%	beta-Pinene	974.00	Monoterpene
4	14.41	1.49%	Myrcene	989.20	Monoterpene
5	14.87	0.10%	Octanal	998.00	Aliphatic Aldehyde
6	14.93	0.04%	alpha-Phellandrene	1002.00	Monoterpene
7	15.16	0.13%	delta-3-Carene	1008.00	Monoterpene
8	16.02	96.77%	Limonene	1029.50	Monoterpene
9	16.02	Co-Eluting	para-Cymene	1024.30	Monoterpene
10	16.02	Co-Eluting	beta-Phellandrene	1030.00	Monoterpene
11	16.02	Co-Eluting	1,8-Cineole	1031.80	Monoterpene Ether
12	18.13	0.03%	Terpinolene	1092.10	Monoterpene
13	18.51	0.23%	Linalool	1099.00	Monoterpenol
14	19.78	0.04%	cis-Limonene oxide	1136.00	Monoterpene Ether
15	19.93	0.02%	trans-Limonene oxide	1138.10	Monoterpene Ether
16	21.79	0.04%	alpha-Terpineol	1191.71	Monoterpenol
17	22.19	0.09%	Decanal	1206.57	Aliphatic Aldehyde
18	23.57	0.01%	Carvone	1248.14	Monoterpene Ketone

ESSENTIAL VALIDATION SERVICES | 747 SW 2ND AVE GAINESVILLE, FLORIDA 32601 | 317-361-5044