



TEXTILE STUDIO
ESTD 2010

SORA
VISTA

HAND BLOCK PRINTED



SELVEDGE

The simple, understated star shaped motif lends itself well to a variety of decorative styles.

SKU - SORVISYDG
COLOR - VISTA
CONTENT - 100% IRISH LINEN, 25 LEA
WIDTH - 54"
REPEAT - 1.5" H 2.625" V

USAGE - DRAPE AND LIGHT UPHOLSTERY

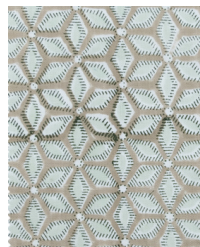
This design has been printed by hand. Due to the nature of this process, subtle imperfections and variations in colour and pattern may occur.



SORBLUYDG
Blush



SORPARYDG
Park



SORNATYDG
Natural