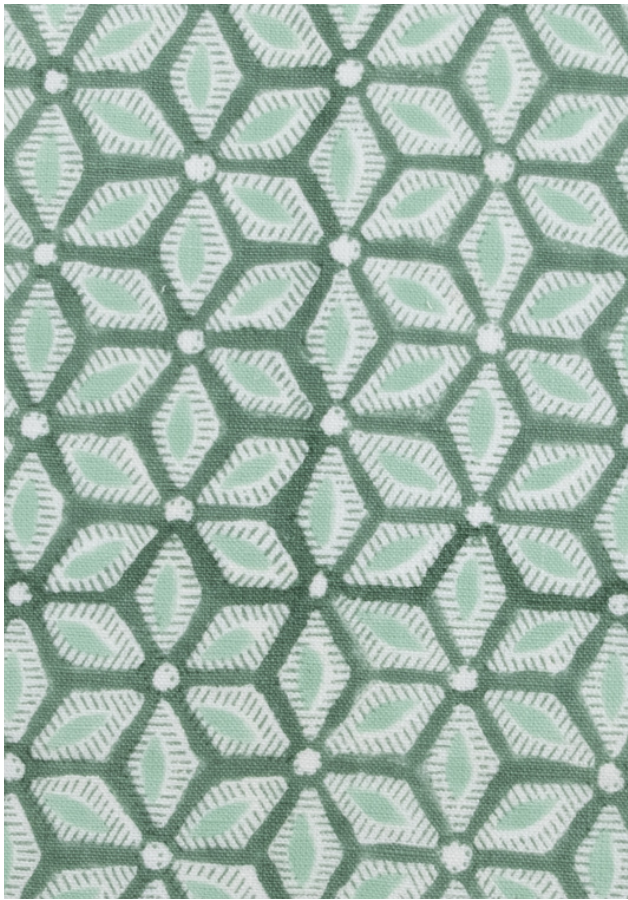




TEXTILE STUDIO
ESTD 2010

SORA
PARK

HAND BLOCK PRINTED



SELVEDGE

The simple, understated star shaped motif lends itself well to a variety of decorative styles.

SKU - SORPARYDG

COLOR - PARK

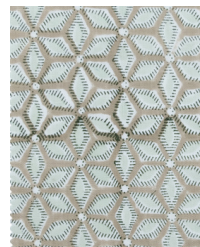
CONTENT - 100% IRISH LINEN, 25 LEA

WIDTH - 54"

REPEAT - 1.5" H 2.625" V

USAGE - DRAPE AND LIGHT UPHOLSTERY

This design has been printed by hand. Due to the nature of this process, subtle imperfections and variations in colour and pattern may occur.



SORBLUYDG
Blush

SORVISYDG
Vista

SORNATYDG
Natural