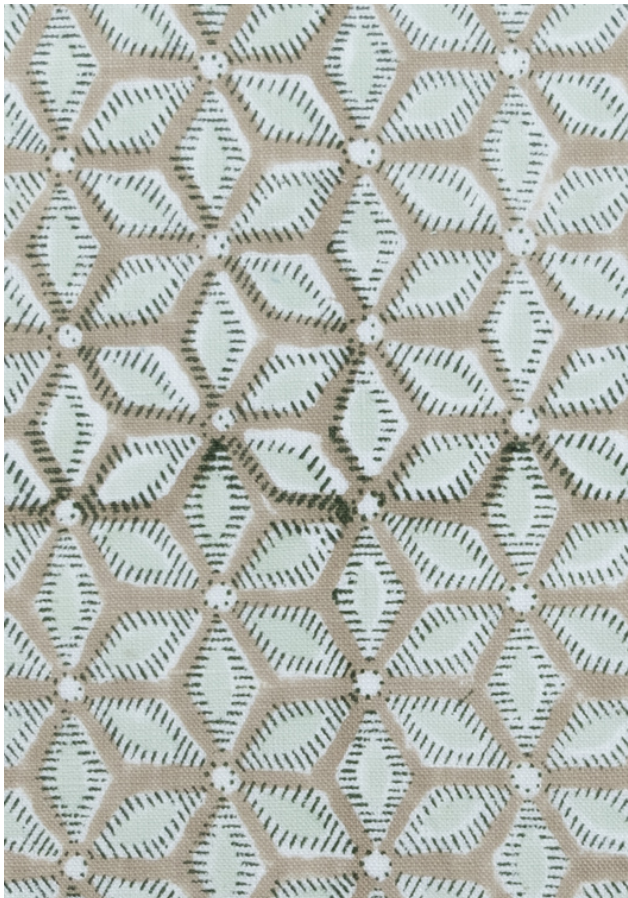




TEXTILE STUDIO  
\*ESTD 2010\*

# SORA NATURAL

HAND BLOCK PRINTED



SELVEDGE

The simple, understated star shaped motif lends itself well to a variety of decorative styles.

SKU - SORNATYDG

COLOR - NATURAL

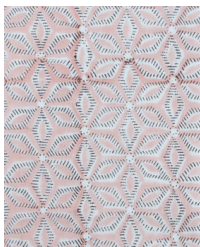
CONTENT - 100% IRISH LINEN, 25 LEA

WIDTH - 54"

REPEAT - 1.5" H 2.625" V

USAGE - DRAPE AND LIGHT UPHOLSTERY

This design has been printed by hand. Due to the nature of this process, subtle imperfections and variations in colour and pattern may occur.



SORBLUYDG  
Blush

SORPARYDG  
Park

SORVISYDG  
Vista