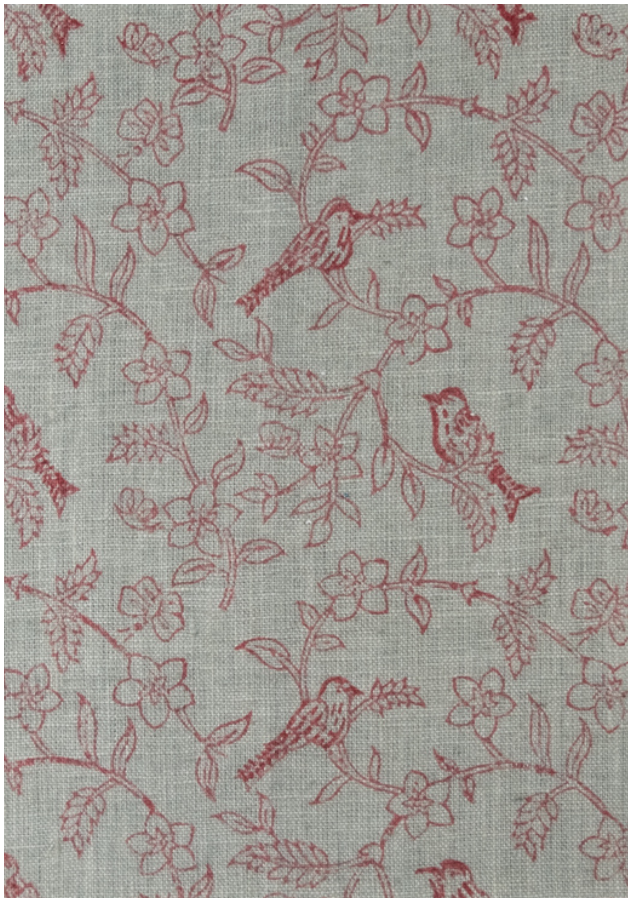




TEXTILE STUDIO  
\*ESTD 2010\*

**CORA**  
**BRICK**

HAND BLOCK PRINTED



SELVEDGE

Cora pattern features a classic vine pattern with birds, butterflies and flowers.

SKU - CORBRIYDG

COLOR - BRICK

CONTENT - 100% IRISH LINEN, 25 LEA

WIDTH - 54"

REPEAT - 4" H 4.25" V

USAGE - DRAPE AND LIGHT UPHOLSTERY

This design has been printed by hand. Due to the nature of this process, subtle imperfections and variations in colour and pattern may occur.



**CORBLUYDG**  
Blush