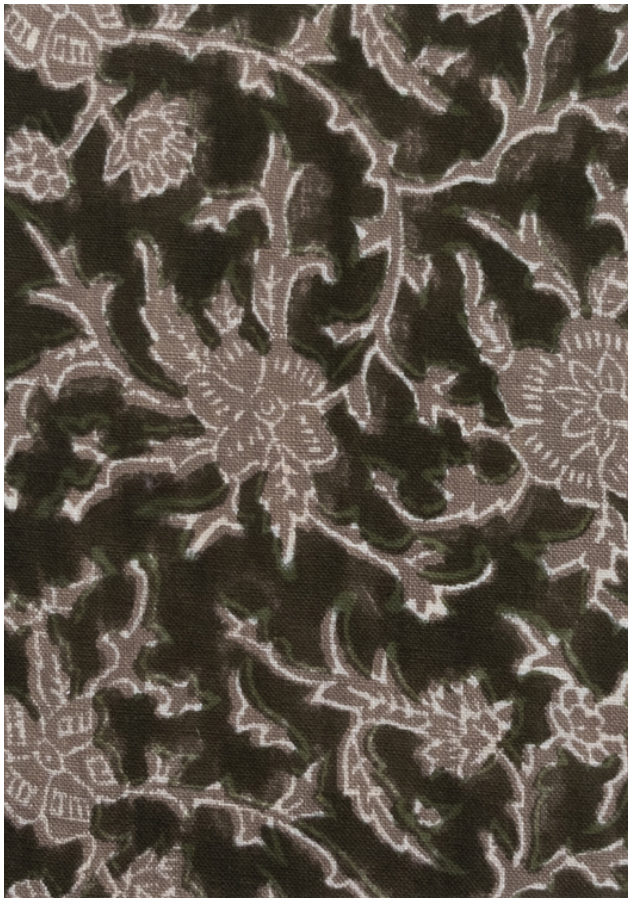




TEXTILE STUDIO
ESTD 2010

BRITTANY
OLIVE

HAND BLOCK PRINTED



SELVEDGE

Classic floral pattern reimagined using contemporary colours and a bold color palette

SKU - BRIOLIYDG
COLOR - OLIVE
CONTENT - 100% IRISH LINEN, 25 LEA
WIDTH - 54"
REPEAT - 6" H 6.375" V

USAGE - DRAPE AND LIGHT UPHOLSTERY

This design has been printed by hand. Due to the nature of this process, subtle imperfections and variations in colour and pattern may occur.



BRIGLAYDG
Glacier

BRICELYDG
Celadon

BRIBLUTANYDG
Blue Tan