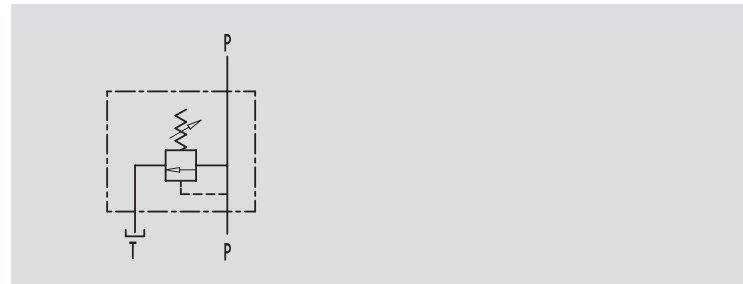


TYPE
VMP

HYDRAULIC DIAGRAM



RELIEF VALVES

USE AND OPERATION:

The relief valve provides overload protection in a fast and accurate way: when it reaches pressure setting, the valve opens allowing pressure relief in order not to exceed this setting.

MATERIALS AND FEATURES:

Body: zinc-plated steel.
Internal parts: hardened and ground steel
Seals: BUNA N standard
Poppet type: minor leakage

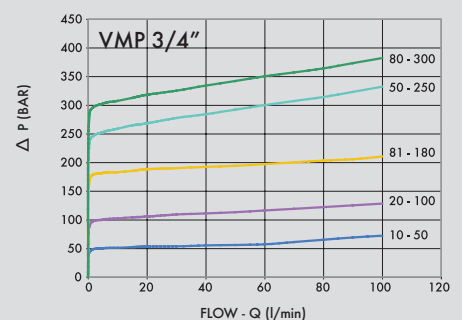
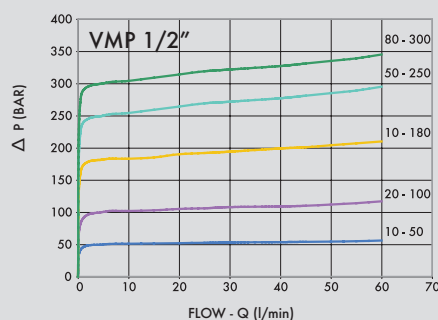
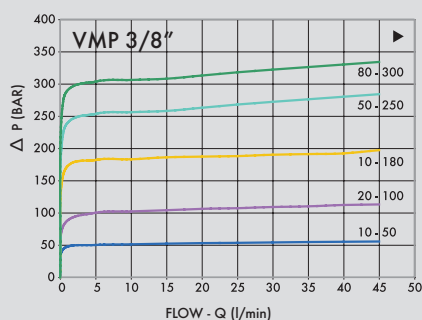
APPLICATIONS:

Connect circuit port with pressure to P and tank port to T. Port P is reversible.

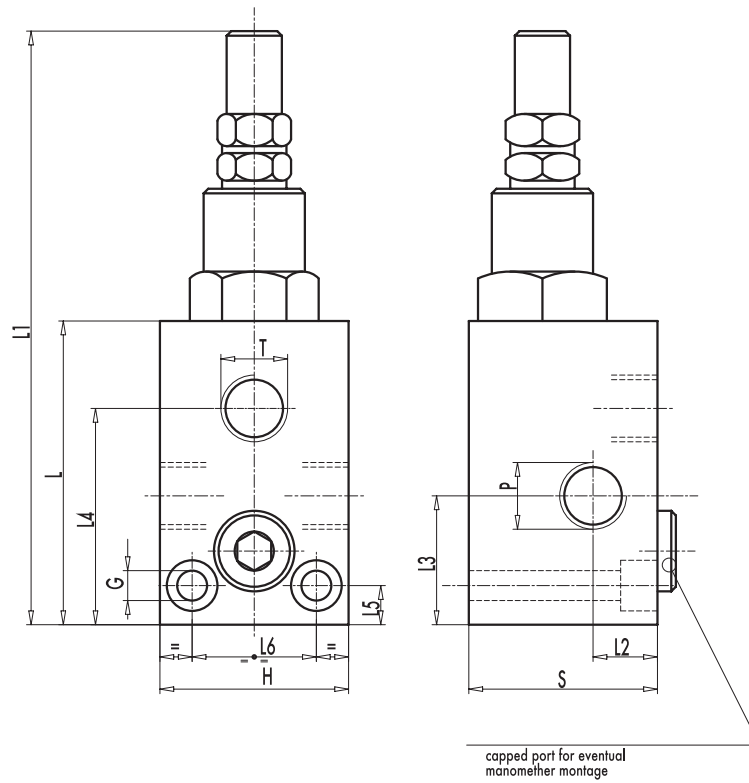
ON REQUEST

- different setting range (see the table)
- other setting available (CODE/T000 please specify the desired setting)

Oil temperature: 50° C - Oil viscosity: 30 cSt



CODE	TYPE	MAX FLOW Ll. / min
V0700	VMP 3/8"	45
V0710	VMP 1/2"	70
V0720	VMP 3/4"	90



CODE	TYPE	P-T GAS	L mm	L1 mm	L2 mm	L3 mm	L4 mm	L5 mm	L6 mm	G mm	H mm	S mm	WEIGHT kg
V0700	VMP 3/8"	G 3/8"	72	134	15	26	49,5	8,5	26	6,5	40	40	0,824
V0710	VMP 1/2"	G 1/2"	77	139	17,5	29,5	54	8,5	30	6,5	45	45	1,058
V0720	VMP 3/4"	G 3/4"	92	154	17,5	35	68	10	32	8,5	50	50	1,470

SPRINGS

Setting range (bar)	Pressure increase (bar/turn) Q= 4l/min	Standard setting (bar)
10 - 50*	7	30
20 - 100	12	75
10 - 180 standard	30	90
50 - 250	45	130
80 - 300	50	150

ADJUSTEMENT

CODE/V	• Handknob
CODE/PP	• Arranged for sealing cap
CODE/PP	• Sealing cap

* For setting less than 70 Bar: Q = 12 l/min