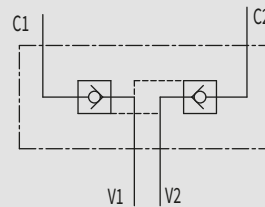


DOUBLE PILOT OPERATED CHECK VALVES - TYPE A



HYDRAULIC DIAGRAM



USE AND OPERATION:

Pilot check valves are used to block the cylinder in both directions. Flow is free in one direction and blocked in the reverse direction until pilot pressure is applied.

MATERIALS AND FEATURES:

Body: zinc-plated steel
Internal parts: hardened and ground steel
Seals: BUNA N standard
Poppet type: any leakage

APPLICATIONS:

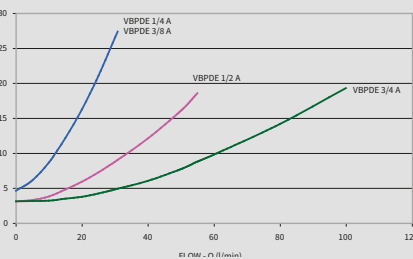
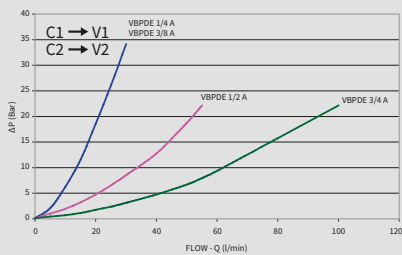
Connect V1 and V2 to the pressure flow and C1 and C2 to the actuator.

ON REQUEST

- without seal on pilot piston
- 1 Bar spring
- 8 Bar spring

PRESSURE DROPS CURVE

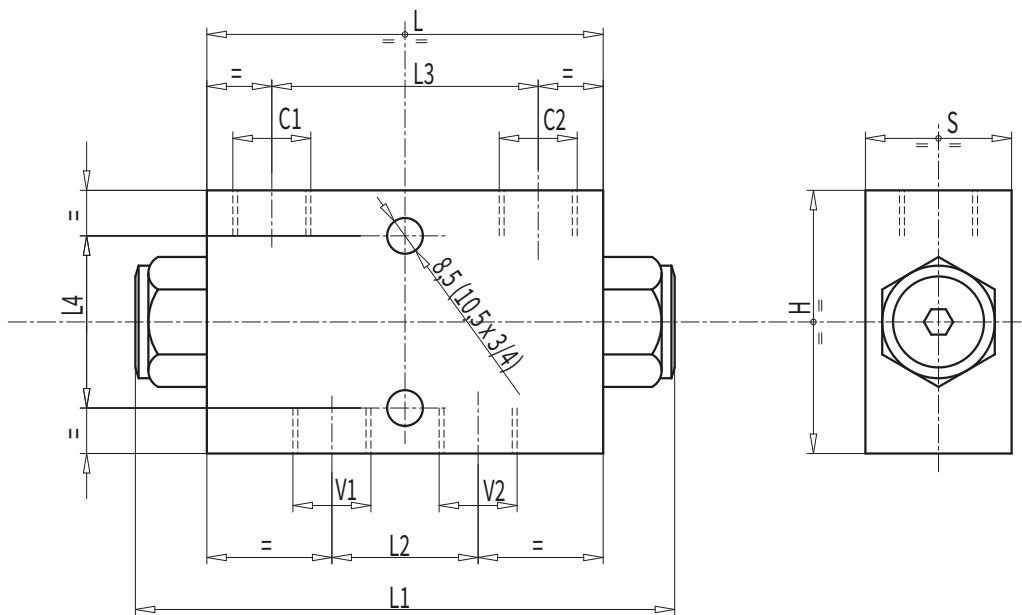
Oil temperature: 50°C - Oil viscosity: 30 cSt





Double Pilot Operated Check Valves

CODE	TYPE	PILOT RATIO	MAX FLOW Lt./min	MAX PRESSURE Bar	CRACKING PRESSURE Bar
V0178	VBPDE ¼" A	1:5,5	20	350	4,5
V0180	VBPDE ⅜" A	1:5,5	30	350	4,5
V0190	VBPDE ½" A	1:4,5	55	350	3
V0191	VBPDE ¾" A	1:3,7	100	350	3



CODE	TYPE	V1-V2 C1-C2	L	L1	L2	L3	L4	H	S	WEIGHT
		GAS	mm	mm	mm	mm	mm	mm	mm	Kg
V0178	VBPDE ¼" A	G ¼"	80	113	27	52	44	60	30	1,032
V0180	VBPDE ⅜" A	G "	80	113	30	52	44	60	30	0,994
V0190	VBPDE ½" A	G ½"	115	147	39	80	40	80	35	2,324
V0191	VBPDE ¾" A	G ¾"	158	198	50	105	58	80	50	4,800