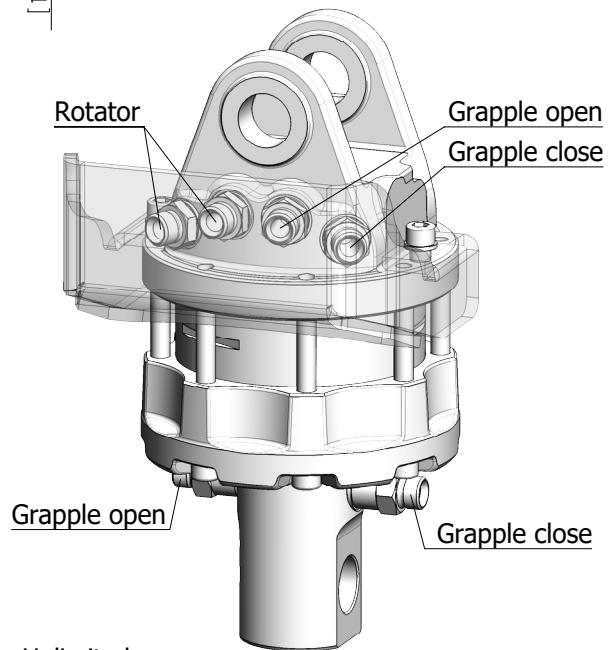
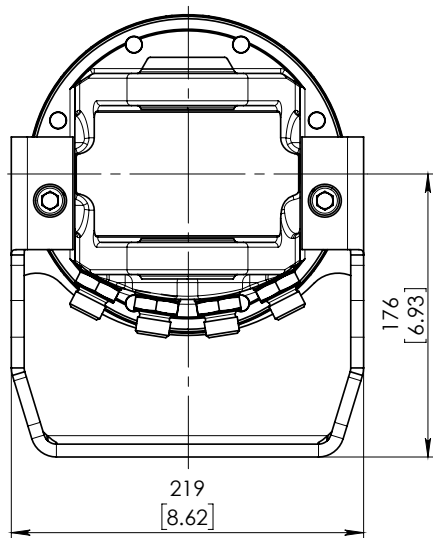
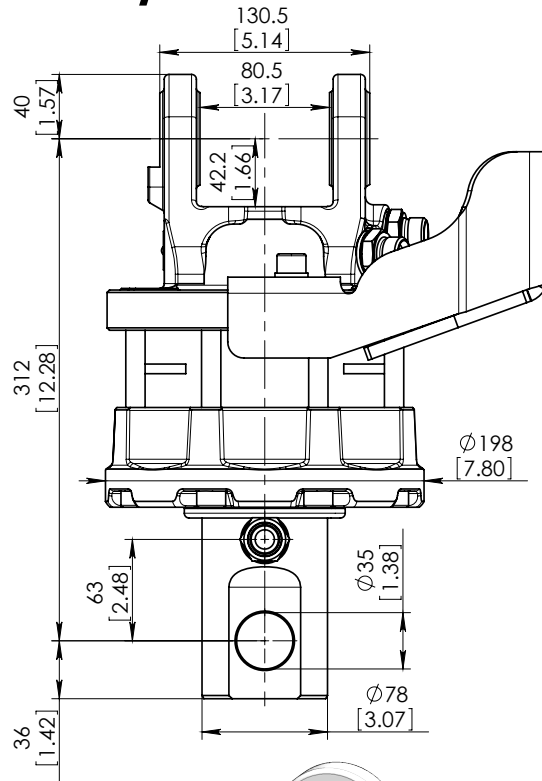
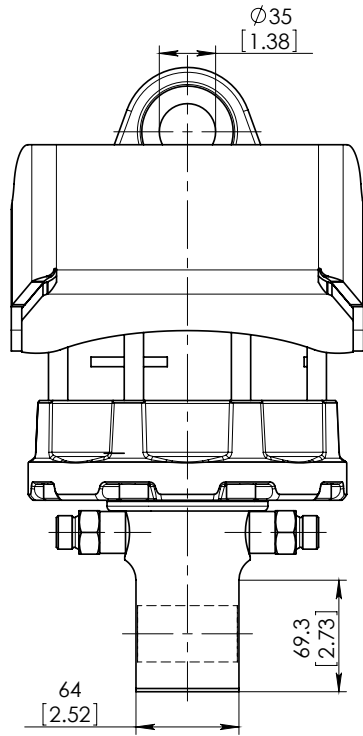


ROTATOR GR60/78X



Technical data

Rotation	Unlimited
Max axial load static, kN (lbf)	60 (13491)
Max axial load dynamic, kN (lbf)	30 (6745)
Torque at 25MPa (3625psi), Nm (lb ft)	1600 (1180)
Rec oilflow, l/min (US gallon)	25 (6.6)
Weight, kg (lb)	39 (86)

Max working pressure:

Rotator	↔R↔	Max 25 MPa (3625 psi)	G 1/2
Grapple / Tool open	↔G↔	Max 20 MPa (2900 psi)	G 1/2
Grapple / Tool close	→G←	Max 30 MPa (4350 psi)	G 1/2

Connection:

Unit 15 Vauxhall Industrial Estate
 Greg Street, Reddish
 Stockport
 SK5 7BR
 United Kingdom
 Telephone: 0844 770 7969
 Fax: 0844 770 7979
 web: www.approvedhydraulics.co.uk

