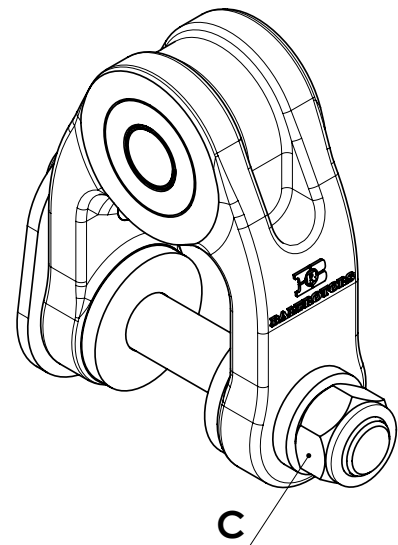
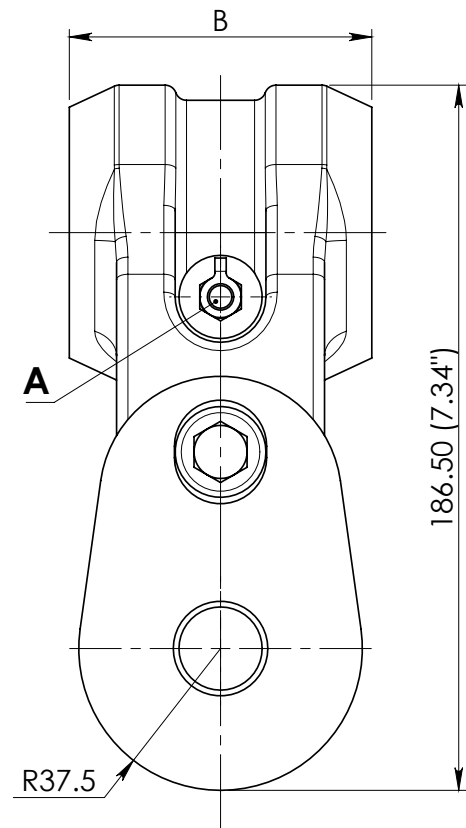
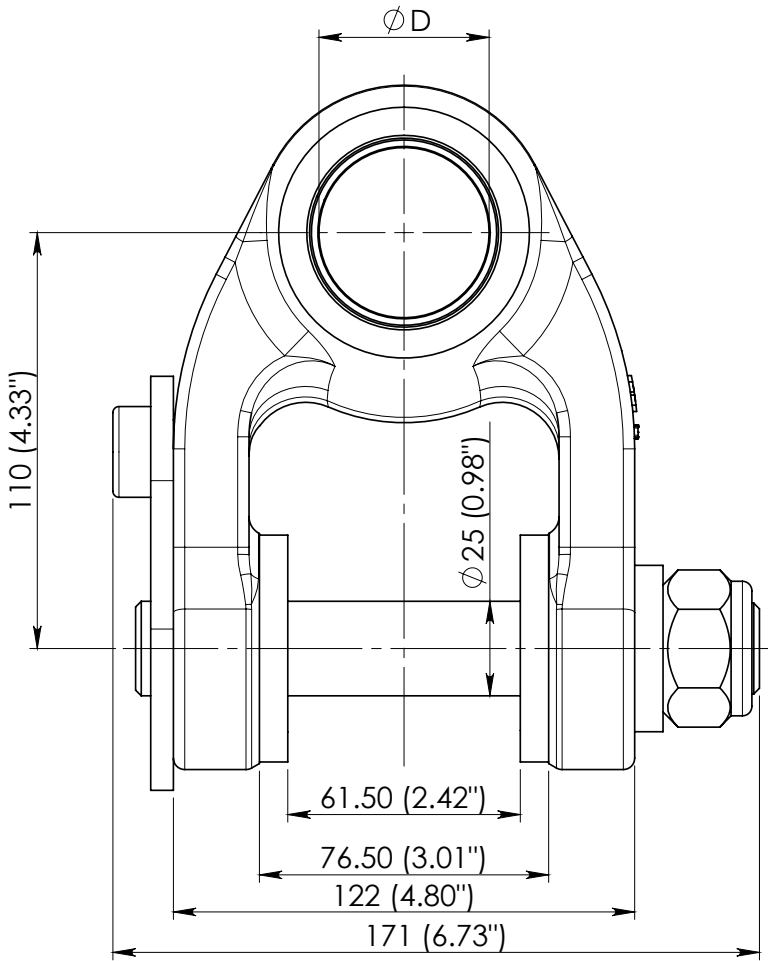


LINK BR1



| Dimensions | | | |
|---|---|---|---|
| Crane nose pivot pin diameter ϕD (mm) | Link width B (mm) | | |
| | 80 ⁰ _{-0.3} (3.15") | 70 ⁰ _{-0.3} (2.76") | 60 ⁰ _{-0.3} (2.36") |
| 45 (1.77") | BR1/80/45 | BR1/70/45 | BR1/60/45 |
| 40 (1.57") | BR1/80/40 | BR1/70/40 | BR1/60/40 |
| 35 (1.38") | BR1/80/35 | BR1/70/35 | BR1/60/35 |
| 30 (1.18") | BR1/80/30 | BR1/70/30 | BR1/60/30 |
| 25 (0.98") | BR1/80/25 | BR1/70/25 | BR1/60/25 |
| 20 (0.79") | BR1/80/20 | BR1/70/20 | BR1/60/20 |

- Max. Load - 5.5 ton (55 kN)
- Weight - 5.7±0.5 kg (12.57±1.10 lb)
- Pin locking nut (C) has to be tightened with a torque of 120 Nm (89 lb ft).
- Fill grease Statoil Uniway Li62 (or equivalent) through lubricating nipple (A), until it will appear to the external surfaces. Greasing must be repeated after every 8 working hours of the link.

03.05.2017 Sheet 1 of 3