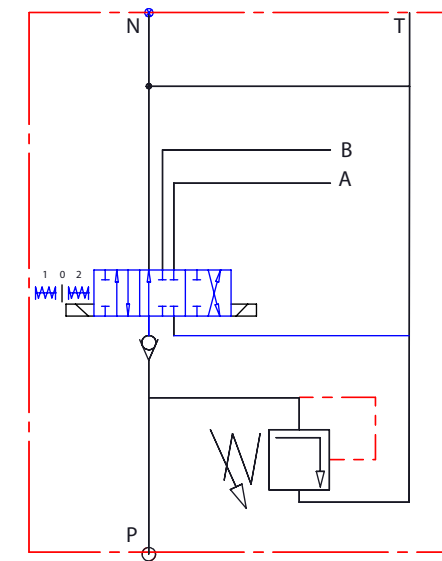


Nominal flow rate - max 80 l/min - see operating diagram  
 Operating pressure:  
 port P - max 250 bar at 25 l/min; max 160 bar at 80 l/min  
 ports A, B - 300 bar  
 port T - <50 bar

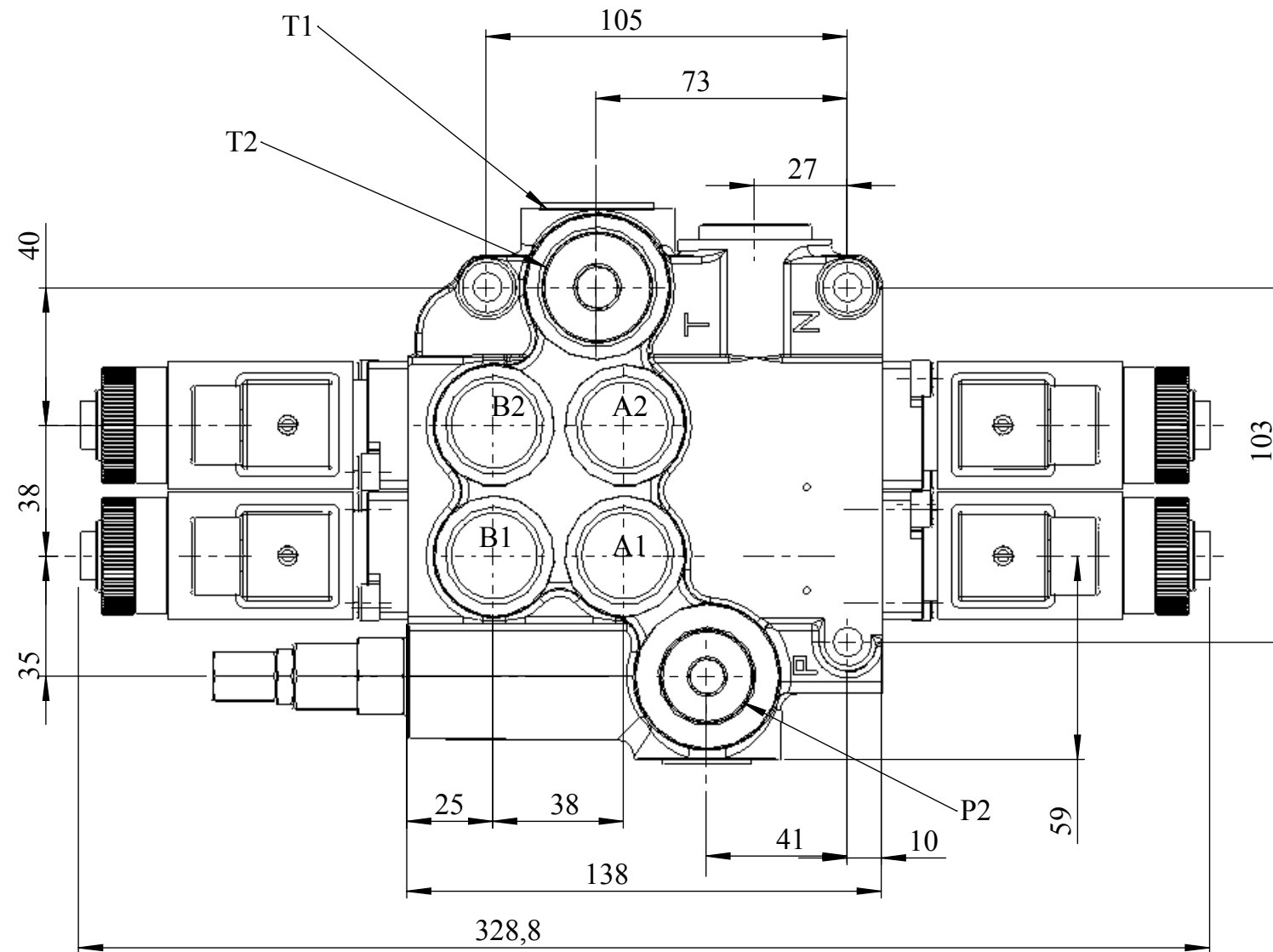
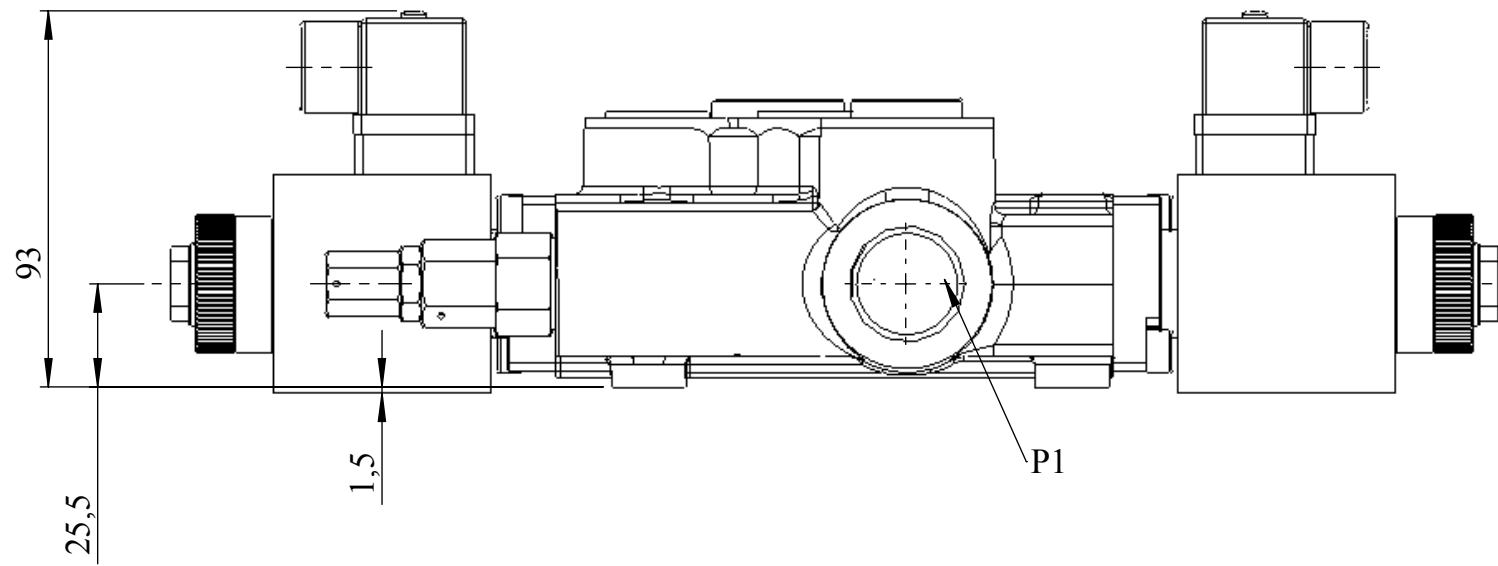
Port threads: P, A, B - G1/2  
 Port T, N - G3/4

Working conditions  
 Recommended Oil viscosity range 10 to 100 cSt  
 Max. contamination: class 10 to NAS 1638  
 19/16 - ISO 4406

24 VDC or 12VDC



sheet	1/1		weight (kg)
scale	1:5		5.163
description	HP-Z80AES3		

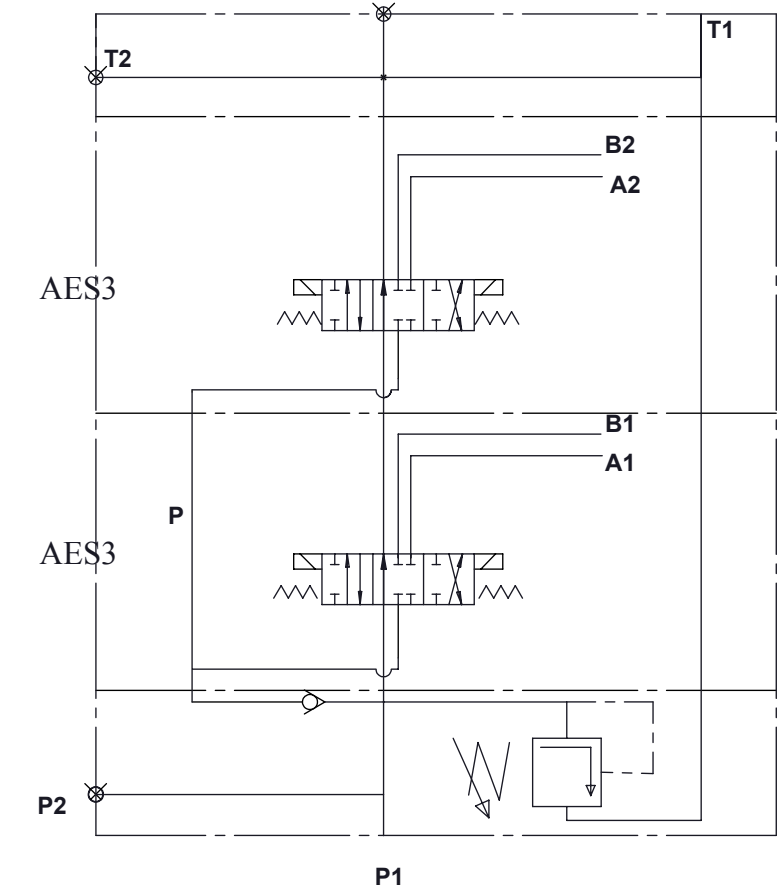


Max. flow rate - max 80 l/min - see operating diagram  
 Operating pressure:  
 port P - max 250 bar at 25 l/min; max 160 bar at 80 l/min  
 ports A, B - 300 bar  
 port T - <50 bar

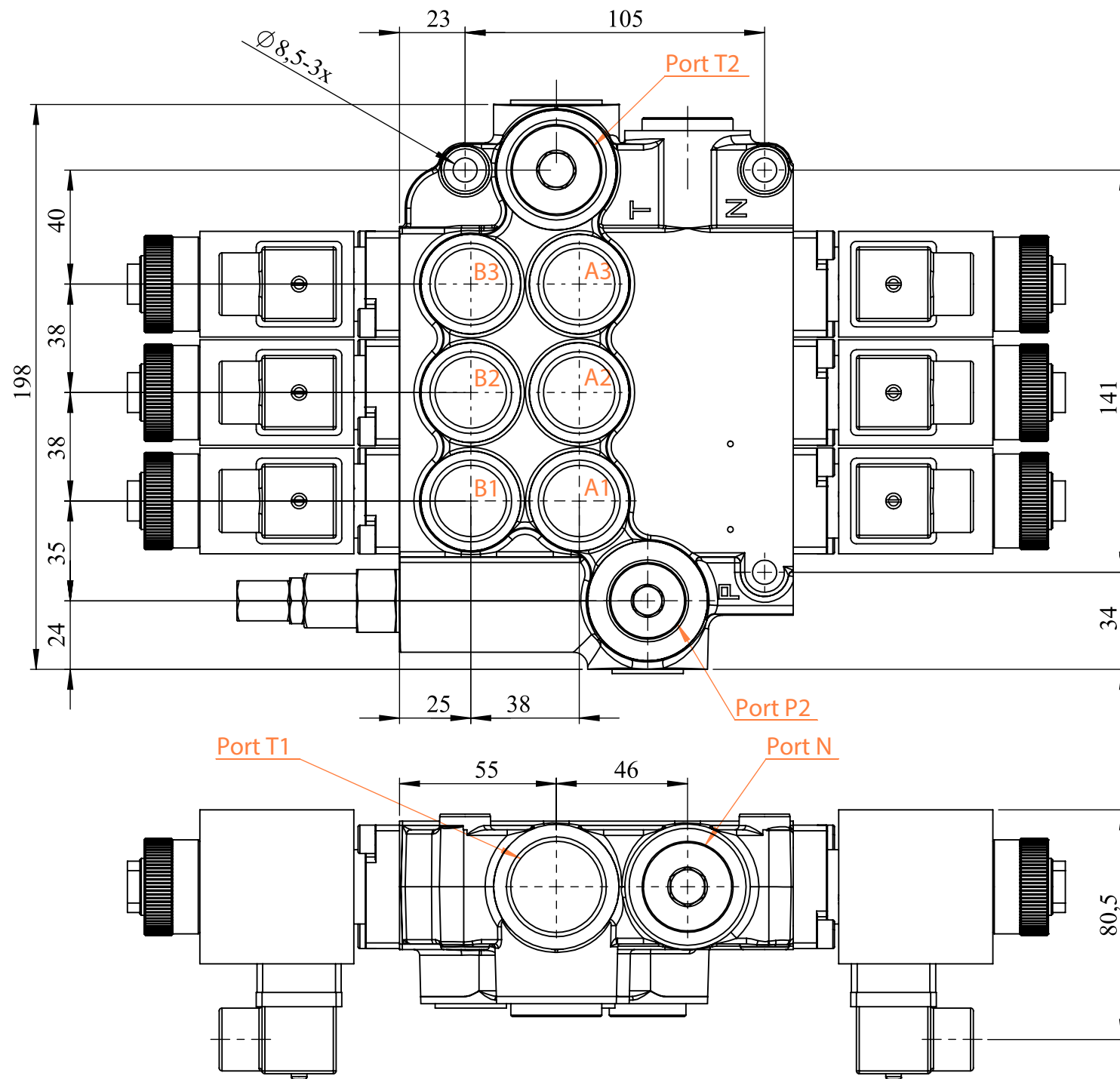
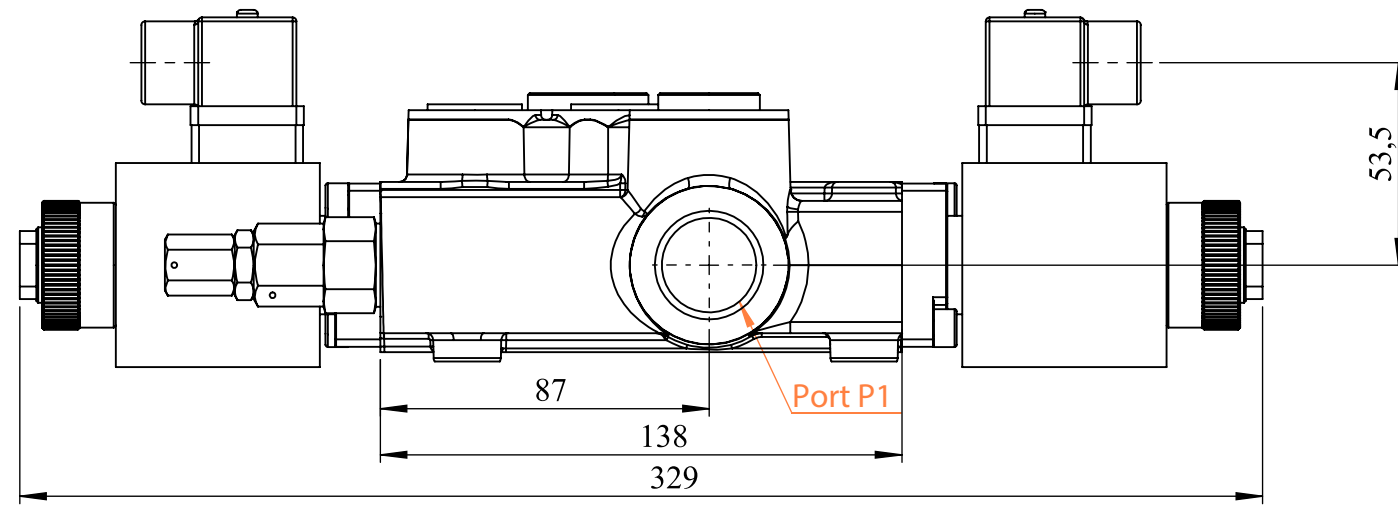
Port threads: P, A, B - G1/2  
 Port T, N - G3/4

Working conditions  
 Recommended Oil viscosity range 10 to 100 cSt  
 Max. contamination: class 10 to NAS 1638  
 19/16 - ISO 4406

Coil: C37D024DCX01 or C37D012DCX01  
 Nominal voltage 24 or 12 VDC  
 Power rating 60 W  
 Duty cycle 100%  
 Coil insulation class H  
 Emergency manual override  
 Connector to EN 175301-803 standards



sheet	1/1		weight (kg)
scale	1:5		7.518
description	HP-02Z80AAES3		

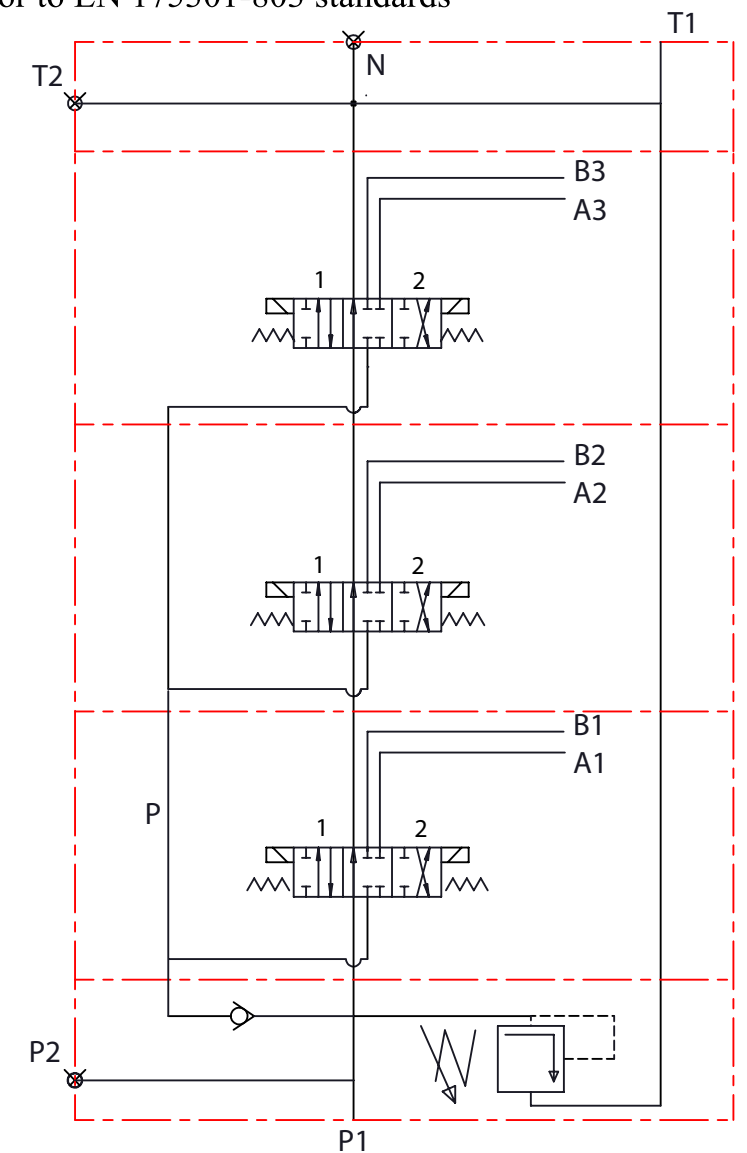


Max. flow rate - max 80 l/min - see operating diagram  
 Operating pressure:  
 port P - max 250 bar at 25 l/min; max 160 bar at 80 l/min  
 ports A, B - 300 bar  
 port T - <math>< 50</math> bar

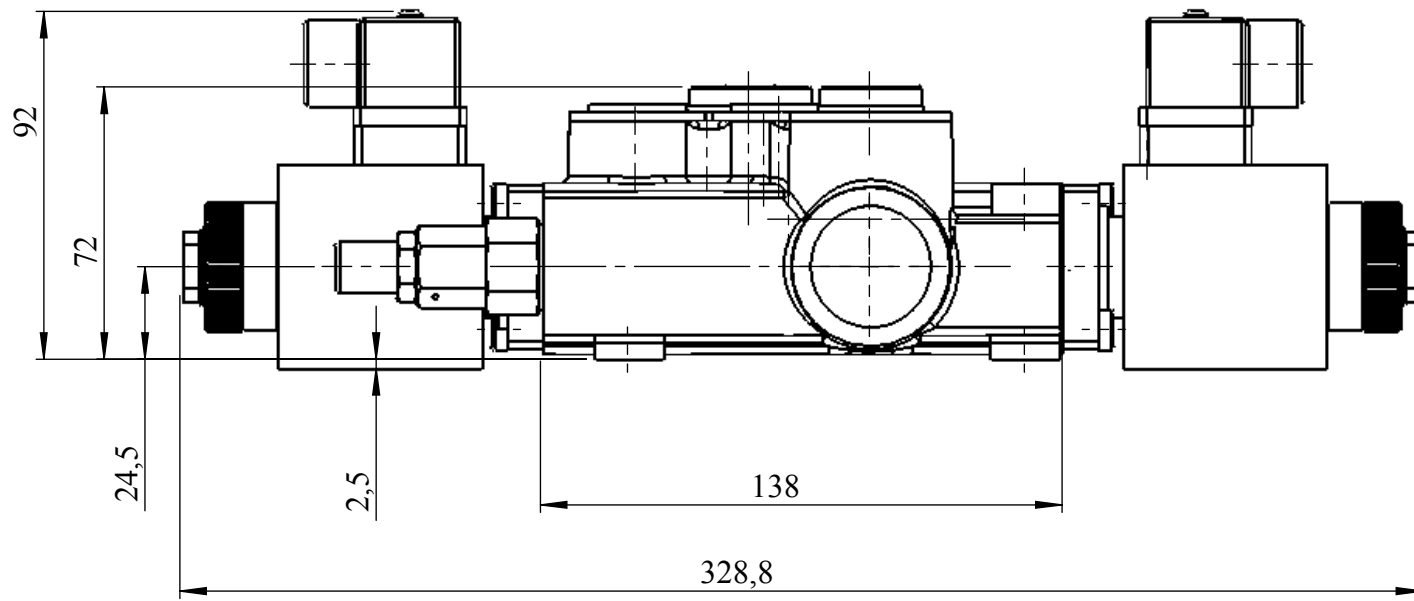
Port threads: P, A, B - G1/2  
 Port T, N - G3/4

Working conditions  
 Recommended Oil viscosity range 10 to 100 cSt  
 Max. contamination: class 10 to NAS 1638  
 19/16 - ISO 4406

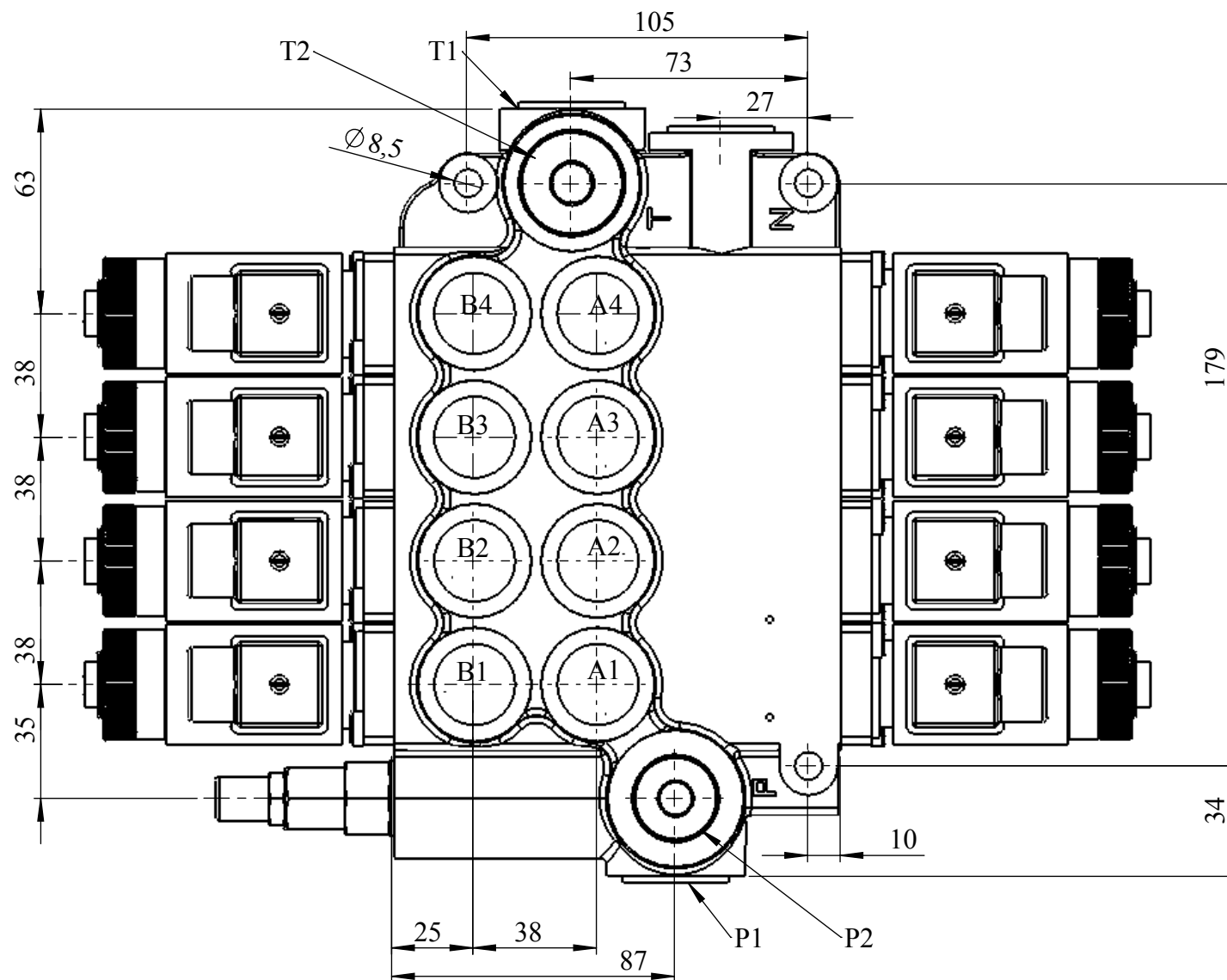
Coil: C37D024DCX01 or C37D012DCX01  
 Nominal voltage 24 or 12 VDC  
 Power rating 60 W  
 Duty cycle 100%  
 Coil insulation class H  
 Emergency manual override  
 Connector to EN 175301-803 standards



sheet	1/1		weight (kg)
description	HP-03Z80AAAES3		10.104



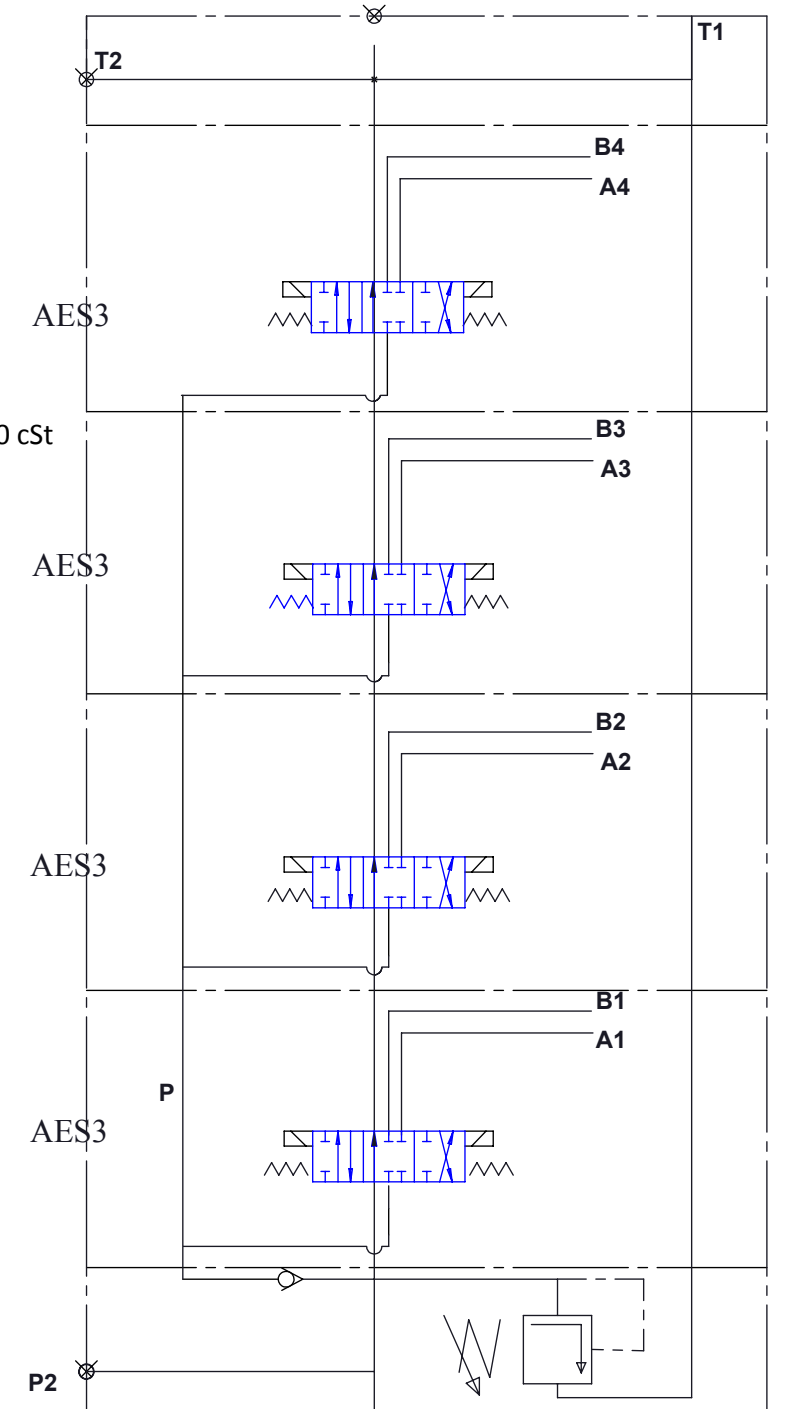
Max. flow rate - max 80 l/min - see operating diagram  
 Operating pressure:  
 port P - max 250 bar at 25 l/min; max 160 bar at 80 l/min  
 ports A, B - 300 bar  
 port T - <50 bar



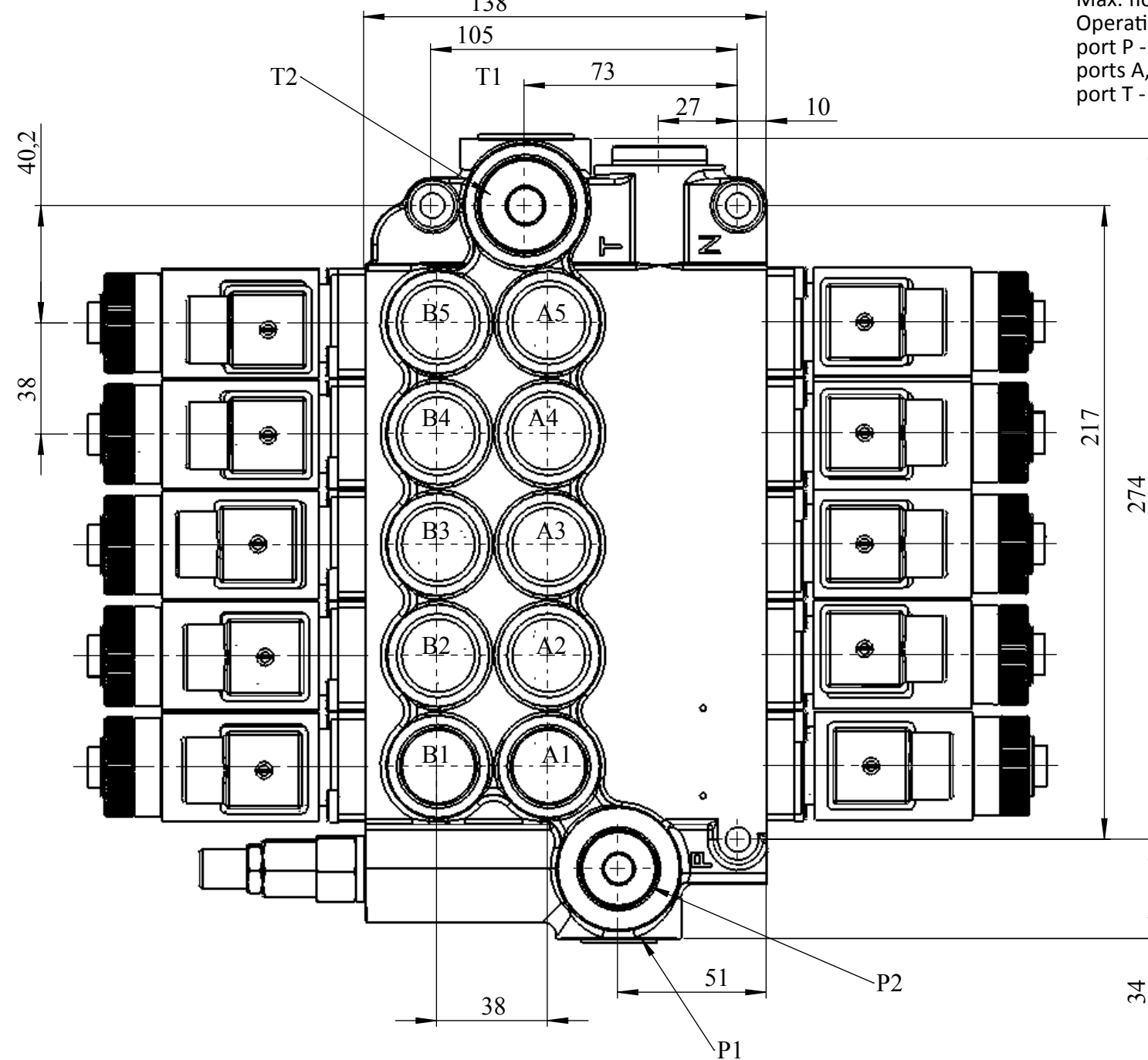
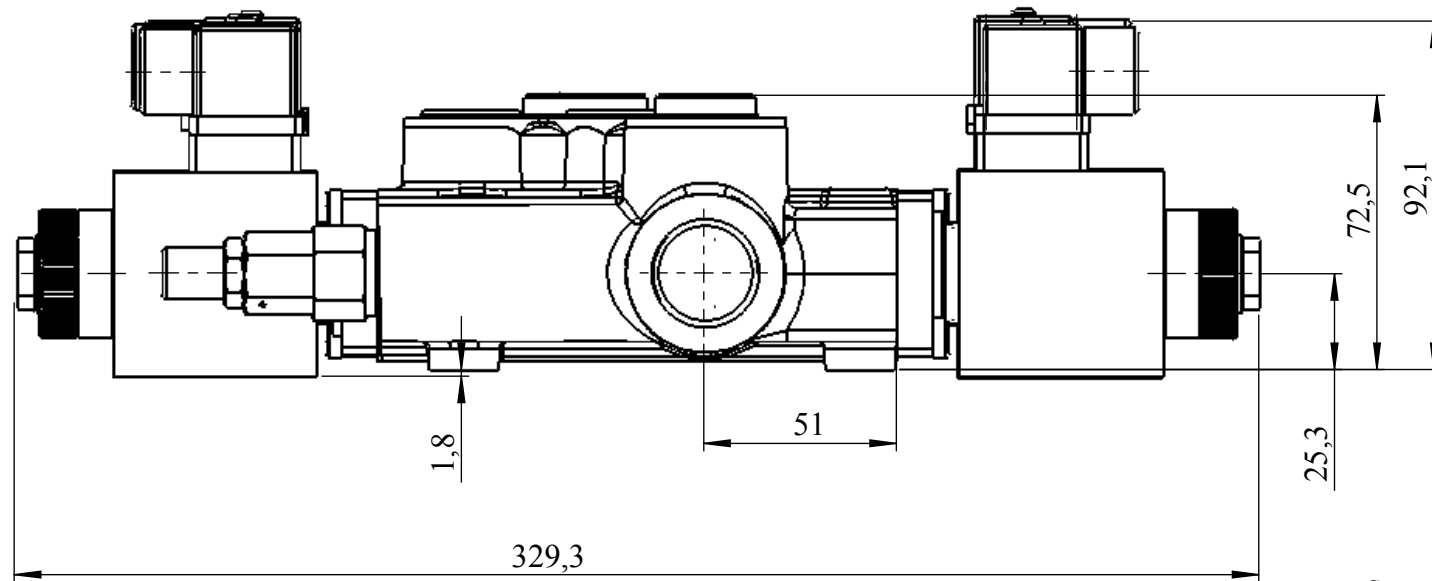
Port threads: P, A, B - G1/2  
 Port T, N - G3/4

Working conditions  
 Recommended Oil viscosity range 10 to 100 cSt  
 Max. contamination: class 10 to NAS 1638  
 19/16 - ISO 4406

Coil: C37D024DCX01 or C37D012DCX01  
 Nominal voltage 24 or 12 VDC  
 Power rating 60 W  
 Duty cycle 100%  
 Coil insulation class H  
 Emergency manual override  
 Connector to EN 175301-803 standards



sheet	1/1		weight (kg) 13.013
description	HP-04Z80AAAES3		

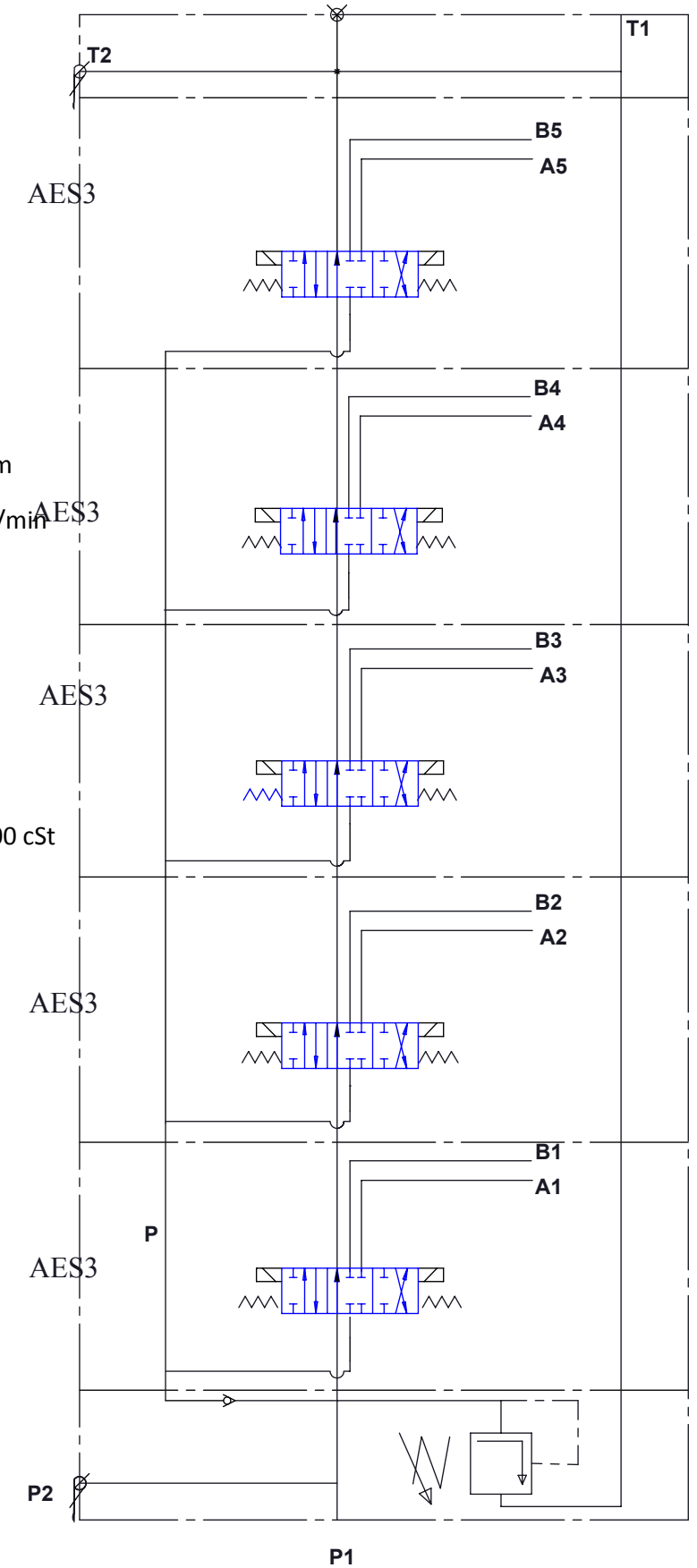


Max. flow rate - max 80 l/min - see operating diagram  
 Operating pressure:  
 port P - max 250 bar at 25 l/min; max 160 bar at 80 l/min  
 ports A, B - 300 bar  
 port T - <50 bar

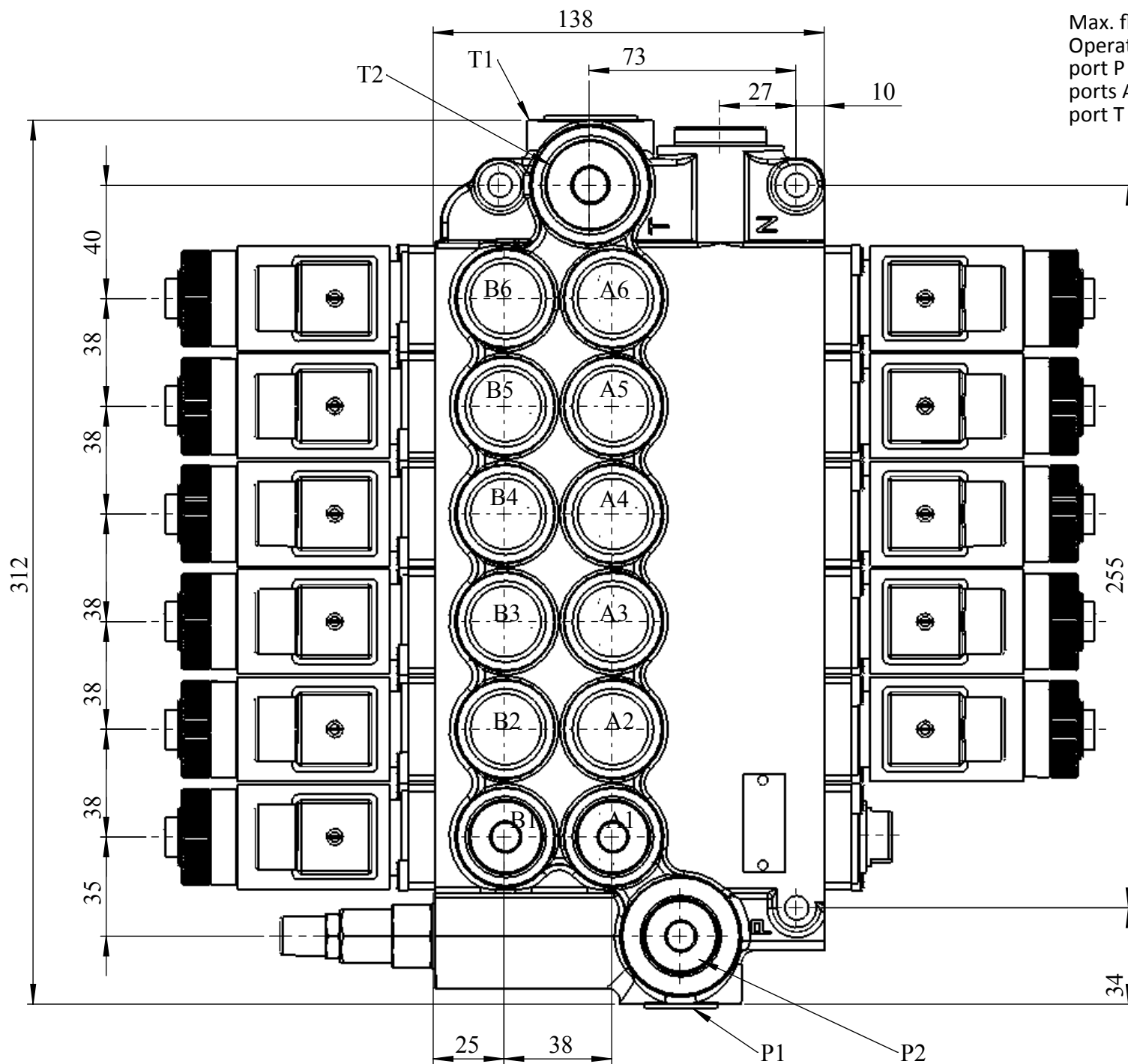
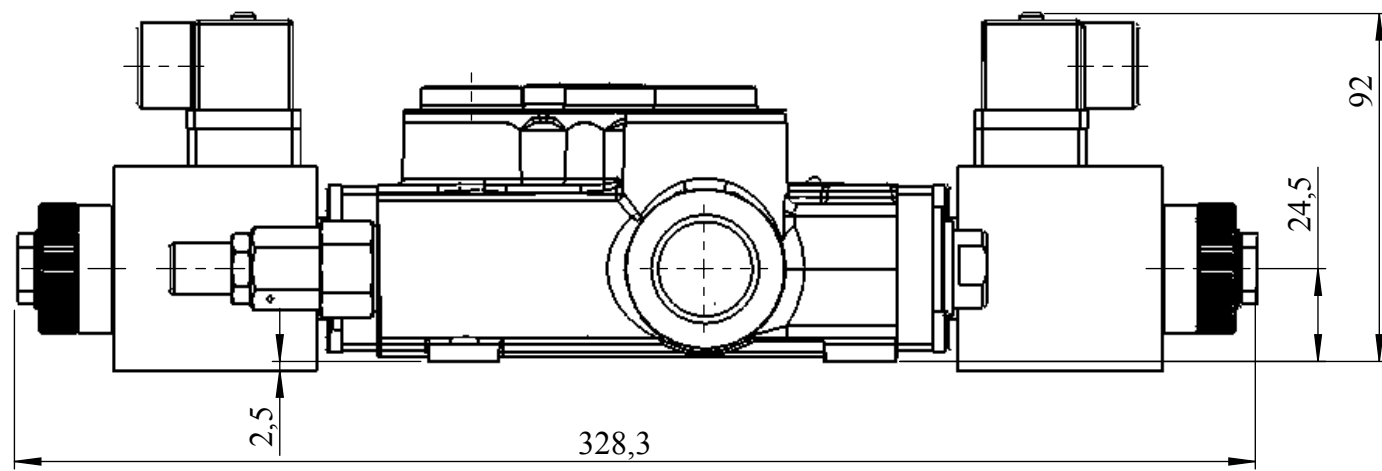
Port threads: P, A, B - G1/2  
 Port T, N - G3/4

Working conditions  
 Recommended Oil viscosity range 10 to 100 cSt  
 Max. contamination: class 10 to NAS 1638  
 19/16 - ISO 4406

Coil: C37D024DCX01 or C37D012DCX01  
 Nominal voltage 24 or 12 VDC  
 Power rating 60 W  
 Duty cycle 100%  
 Coil insulation class H  
 Emergency manual override  
 Connector to EN 175301-803 standards



sheet	1/1		weight (kg) 13.013
description	HP-05Z80AAAAAES3		

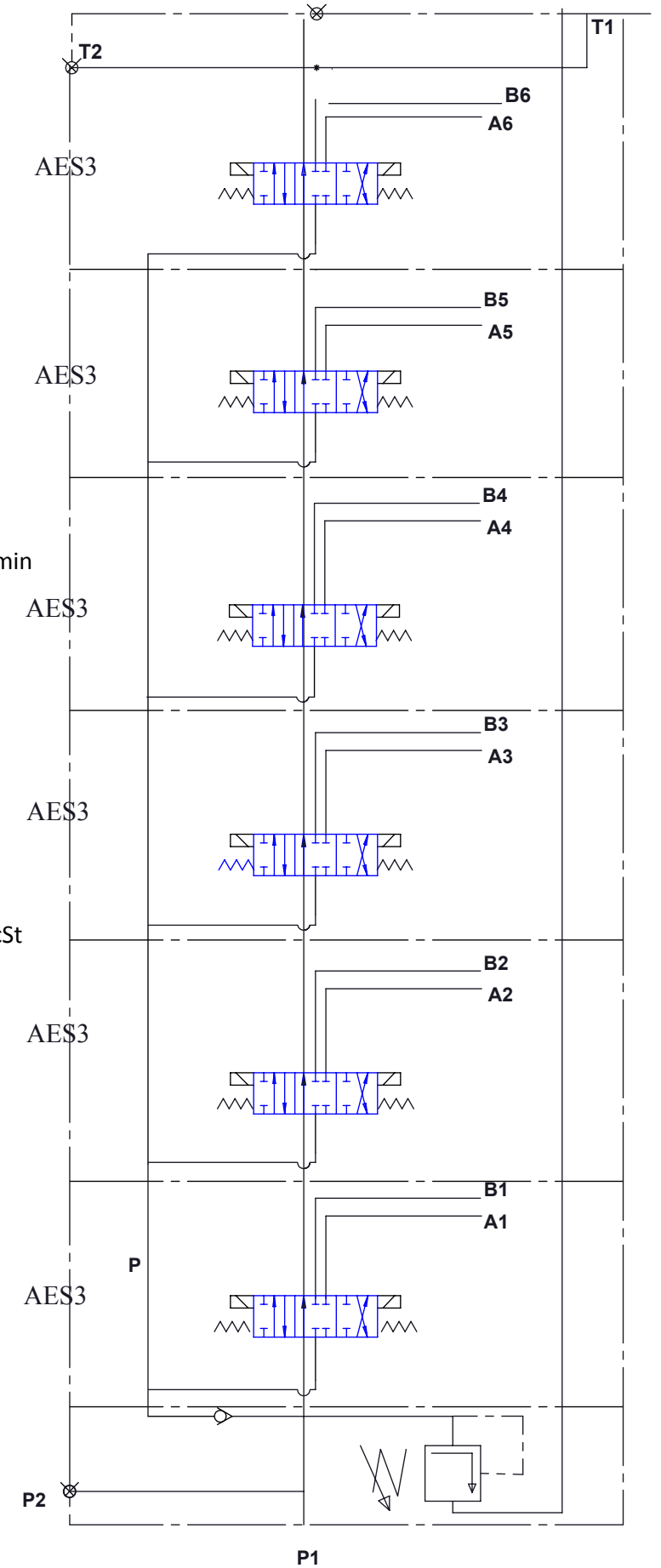


Max. flow rate - max 80 l/min - see operating diagram  
 Operating pressure:  
 port P - max 250 bar at 25 l/min; max 160 bar at 80 l/min  
 ports A, B - 300 bar  
 port T - <50 bar

Port threads: P, A, B - G1/2  
 Port T, N - G3/4

Working conditions  
 Recommended Oil viscosity range 10 to 100 cSt  
 Max. contamination: class 10 to NAS 1638  
 19/16 - ISO 4406

Coil: C37D024DCX01 or C37D012DCX01  
 Nominal voltage 24 or 12 VDC  
 Power rating 60 W  
 Duty cycle 100%  
 Coil insulation class H  
 Emergency manual override  
 Connector to EN 175301-803 standards



sheet	1/1		weight (kg) 18.244
description	HP-06Z80AAAAAES3		