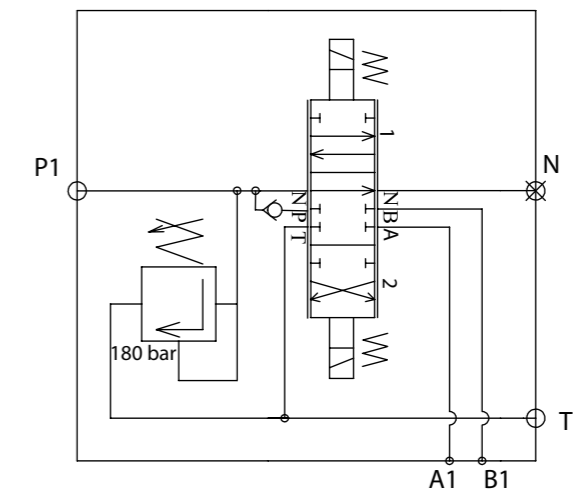


Hydraulic scheme of Z50 A ES3 G 24VDC

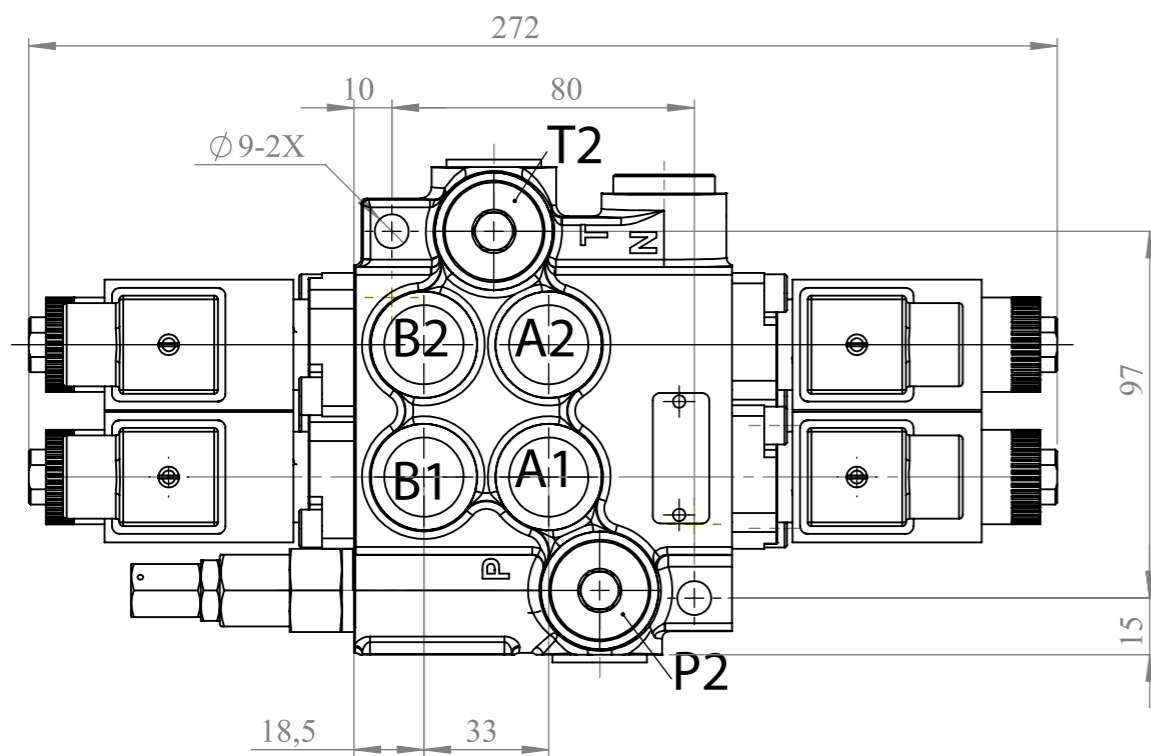
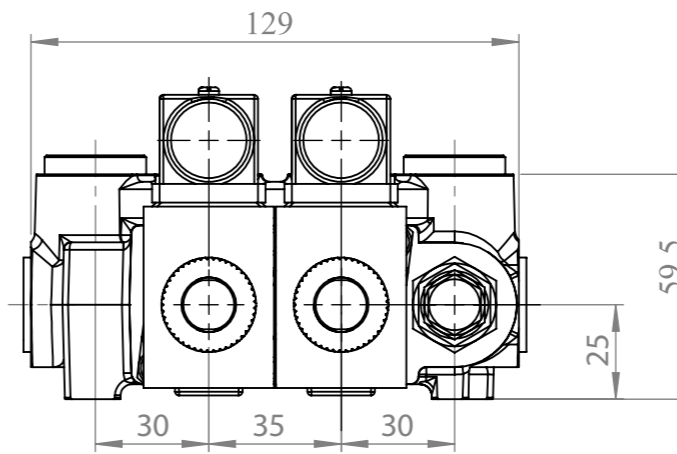
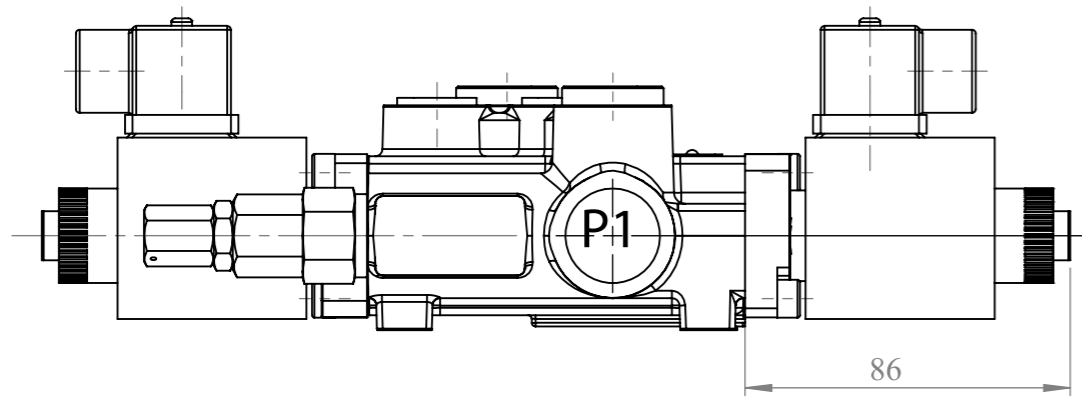


Nominal flow rate: 50 l/min
Operating pressures:
 @ port P - 250 bar
 @ port A, B - 300 bar
 @ port T - 50 bar

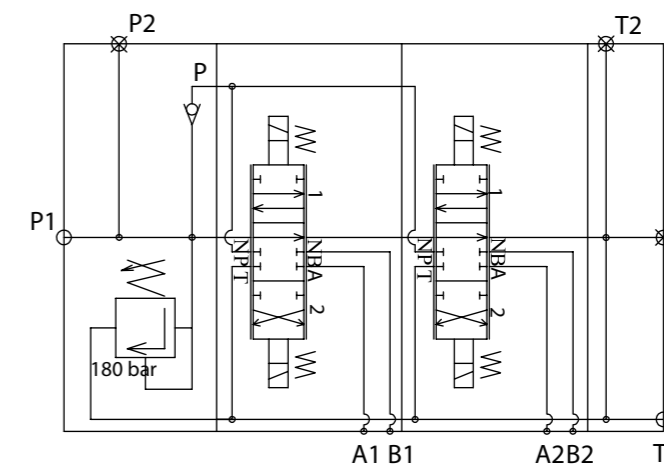
Port threads:
 Port P - BSP G 1/2"
 Port A, B - BSP G 3/8"
 Port T - BSP G 1/2"
 Port N - BSP G 1/2"

Working conditions
 Recommended Oil Viscosity range: 10cSt to 100cSt
 Recommended Oil Filtering: $\beta_{10} \geq 75$
 Max Contamination: class 10 (NAS 1638)
 19/16 (ISO 4406)

sheet	1/1		weight (kg)
			5.46
description	HP-Z50AES3		



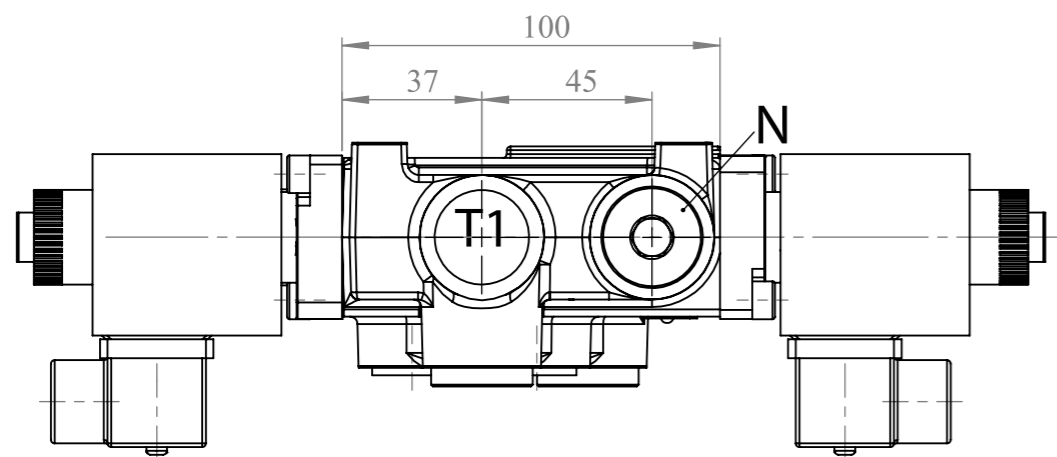
Hydraulic scheme of 02Z50 AA ES3 G 24VDC



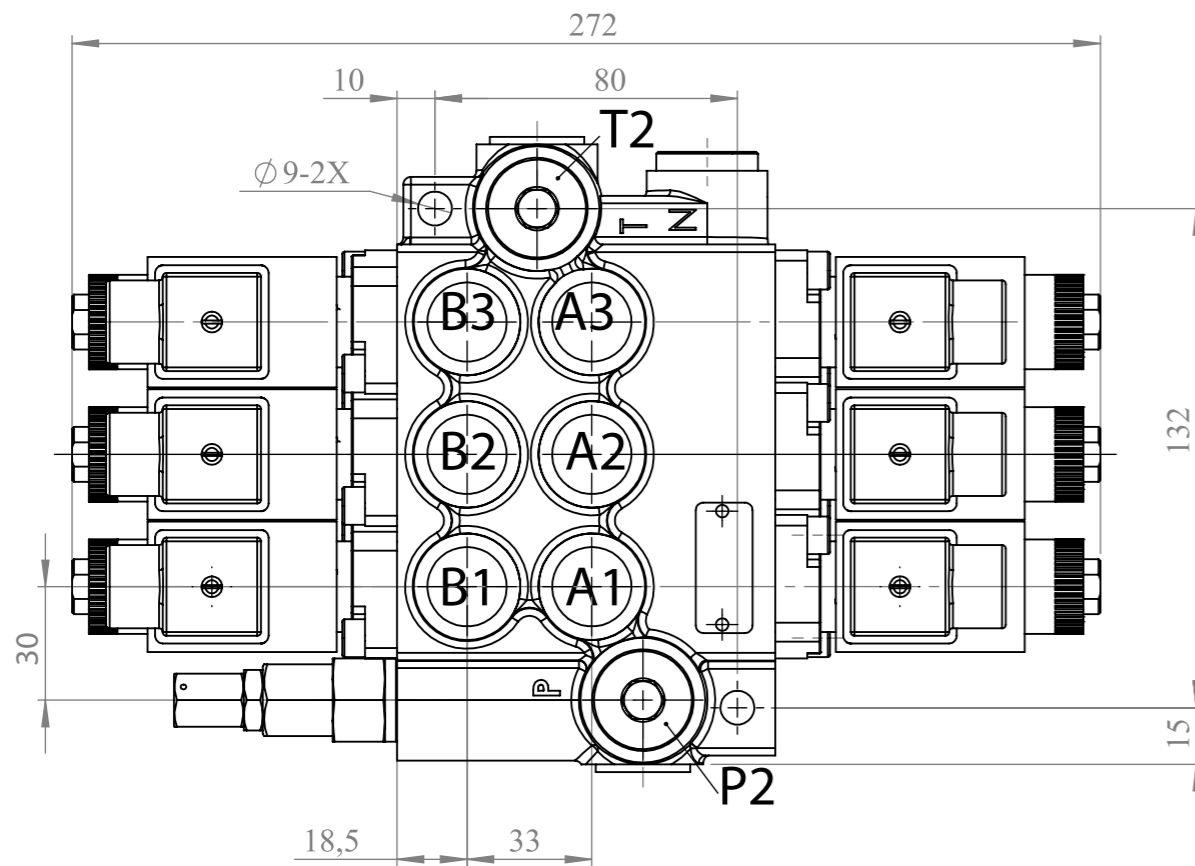
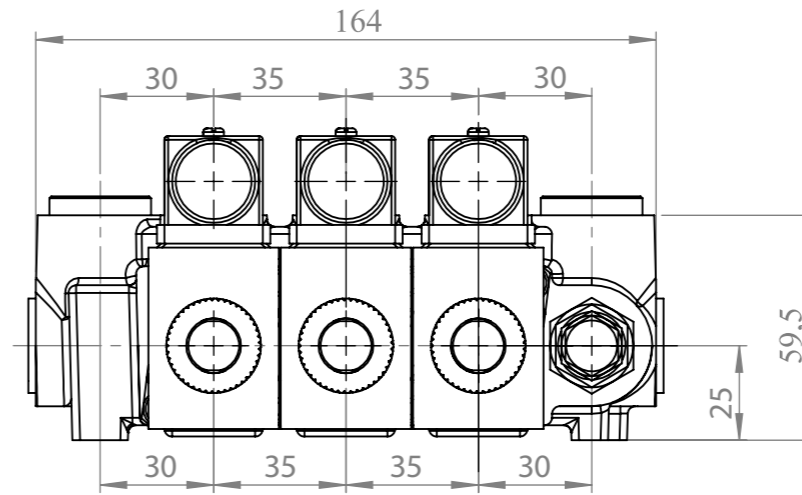
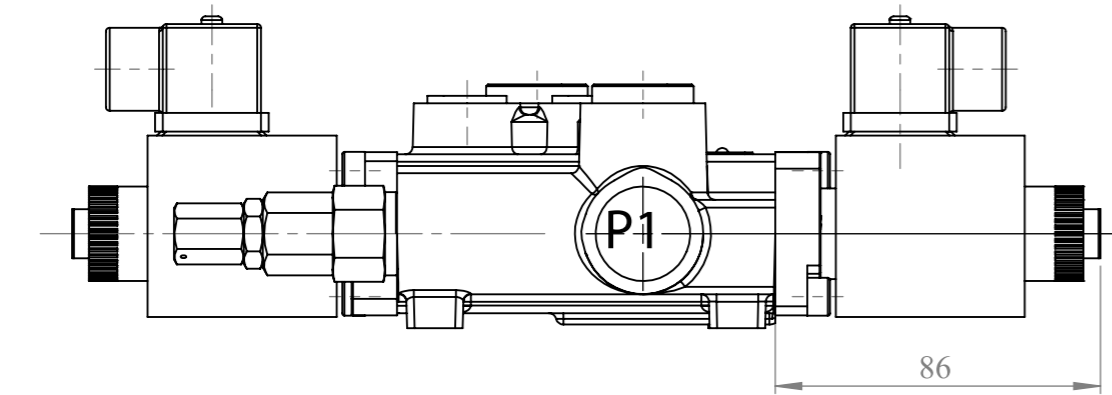
Nominal flow rate: 50 l/min
Operating pressures:
 @ port P - 250 bar
 @ port A, B - 300 bar
 @ port T - 50 bar

Port threads:
 Port P - BSP G 1/2"
 Port A, B - BSP G 3/8"
 Port T - BSP G 1/2"
 Port N - BSP G 1/2"

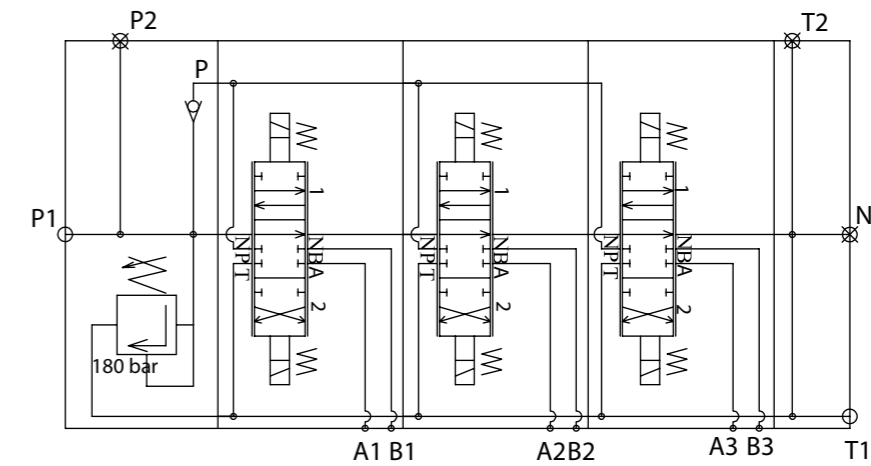
Working conditions
 Recommended Oil Viscosity range: 10cSt to 100cSt
 Recommended Oil Filtering: $\beta_{10} \geq 75$
 Max Contamination: class 10 (NAS 1638)
 19/16 (ISO 4406)



sheet	1/1		weight (kg)
			9.46
description	HP-02Z50AAES3		



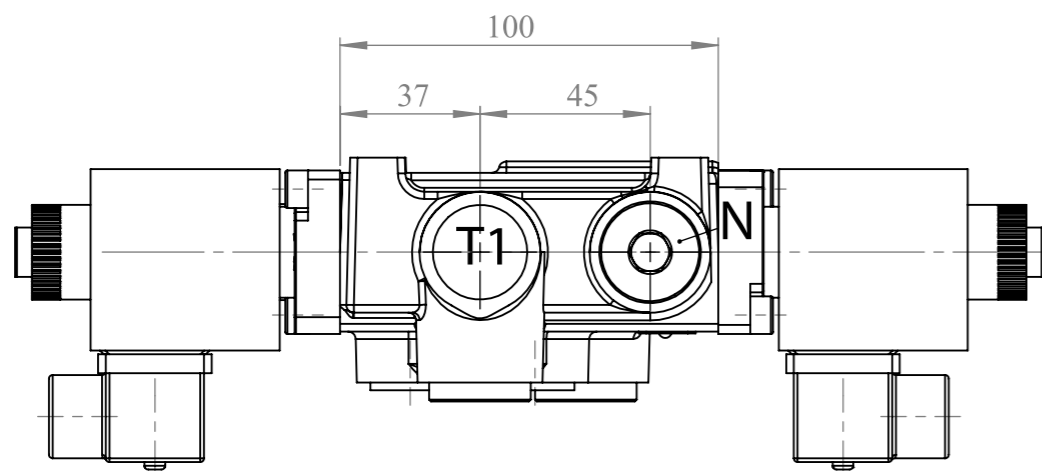
Hydraulic scheme of 03Z50 AAA ES3 G 24VDC



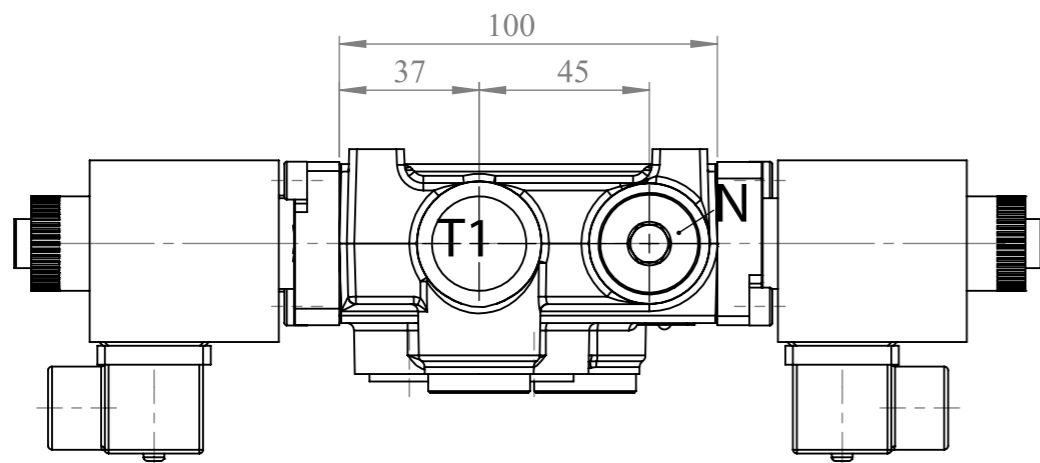
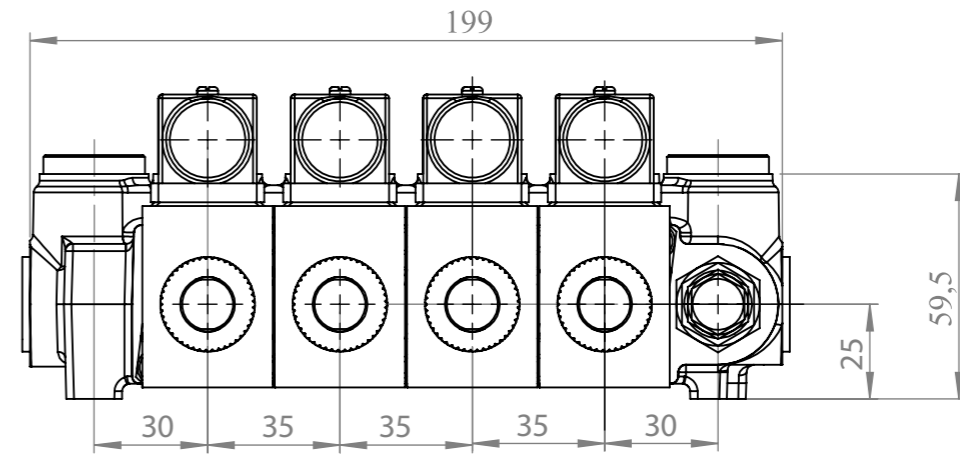
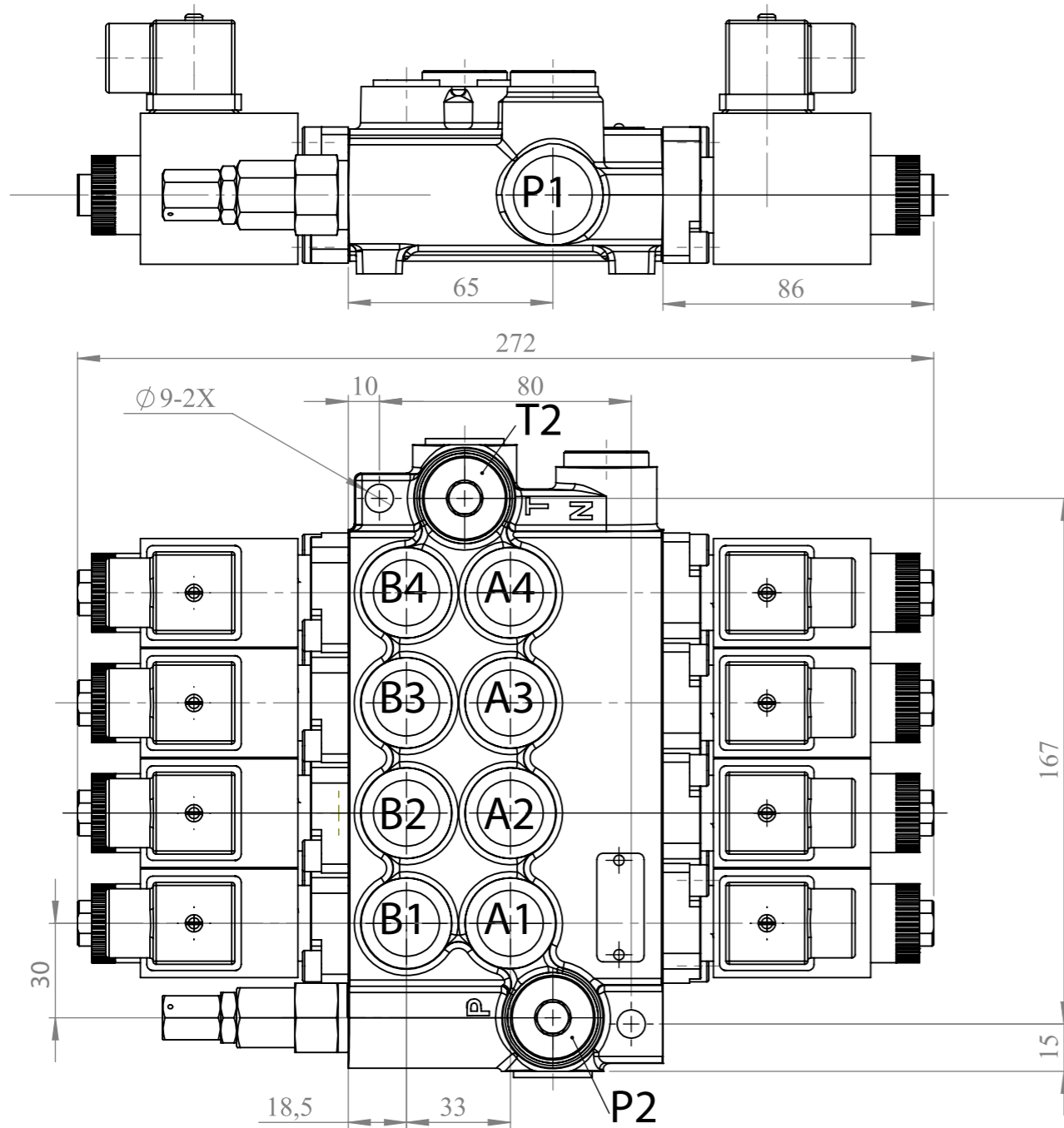
Nominal flow rate: 50 l/min
Operating pressures:
 @ port P - 250 bar
 @ port A, B - 300 bar
 @ port T - 50 bar

Port threads:
 Port P - BSP G 1/2"
 Port A, B - BSP G 3/8"
 Port T - BSP G 1/2"
 Port N - BSP G 1/2"

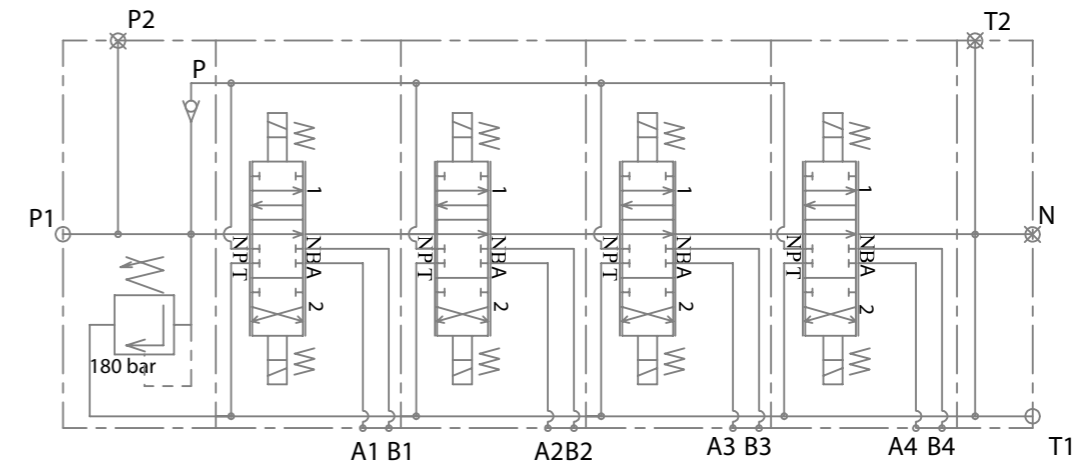
Working conditions
 Recommended Oil Viscosity range: 10cSt to 100cSt
 Recommended Oil Filtering: $\beta_{10} \geq 75$
 Max Contamination: class 10 (NAS 1638)
 19/16 (ISO 4406)



sheet	1/1		weight (kg)
			12.40
description	HP-03Z50AAAES3		



Hydraulic scheme of 04Z50 AAAA ES3 G 24VDC

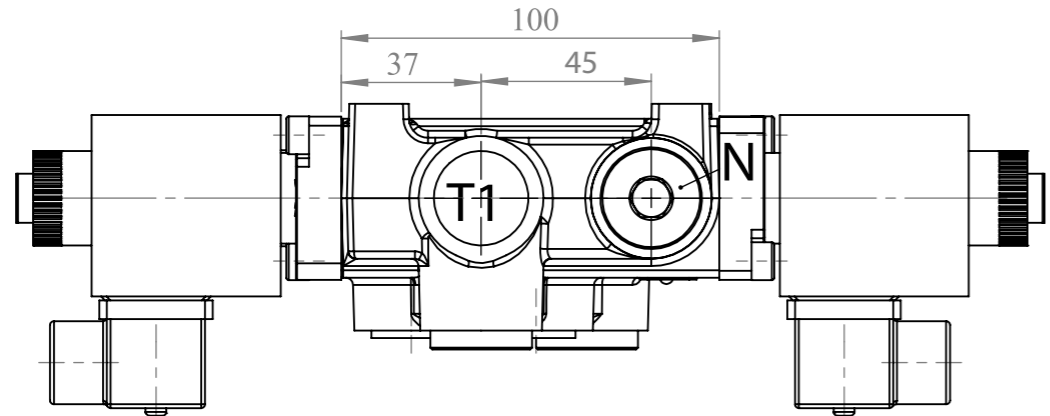
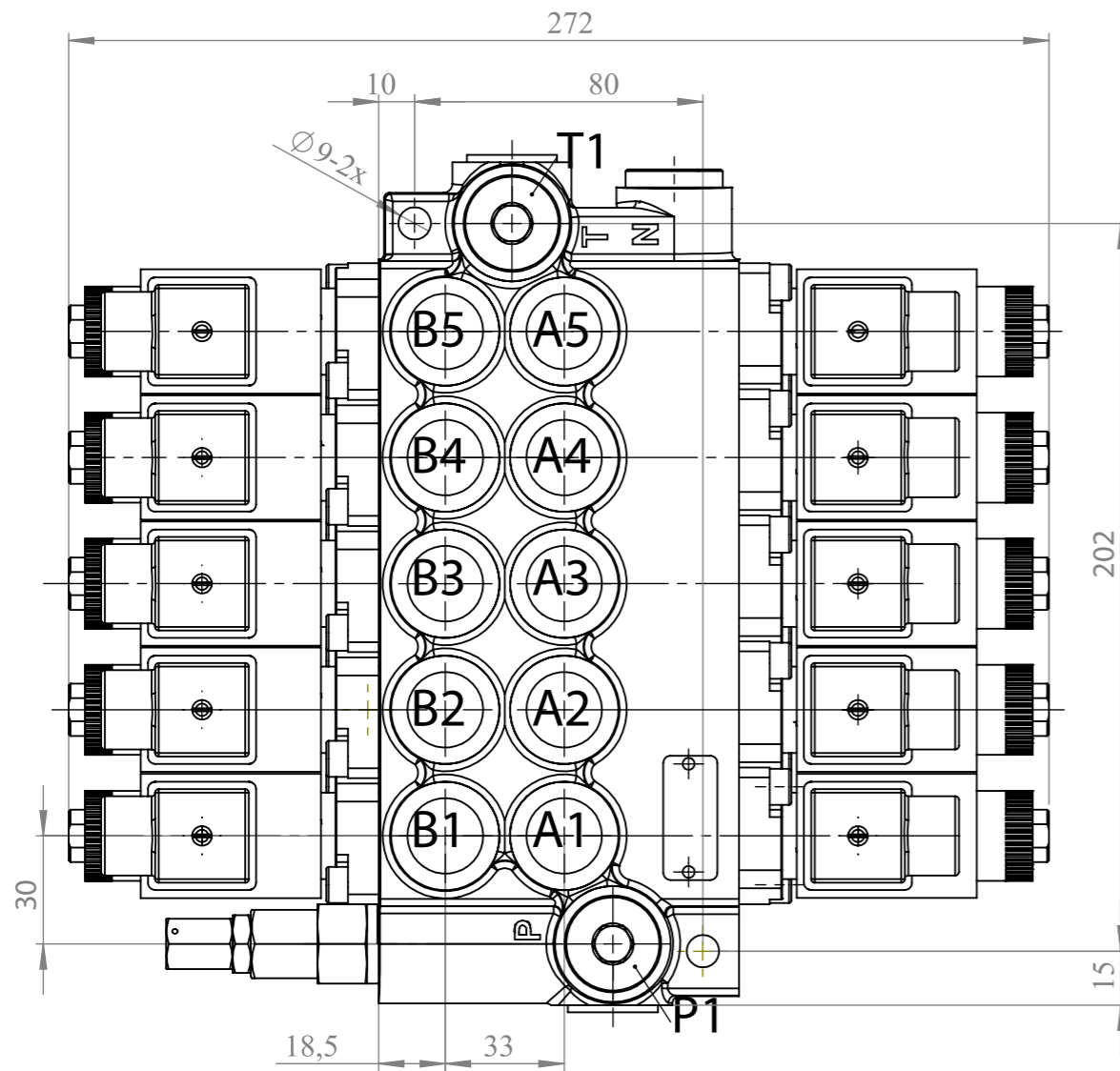
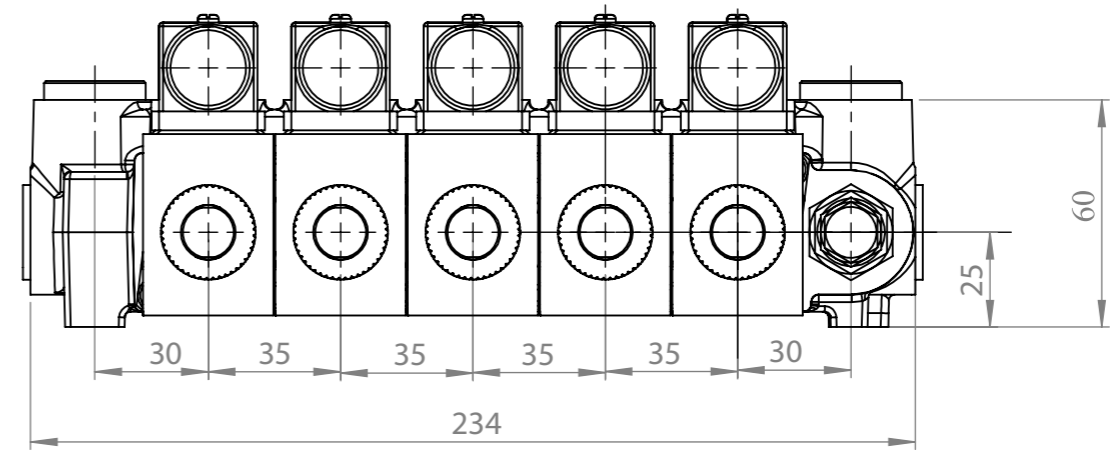
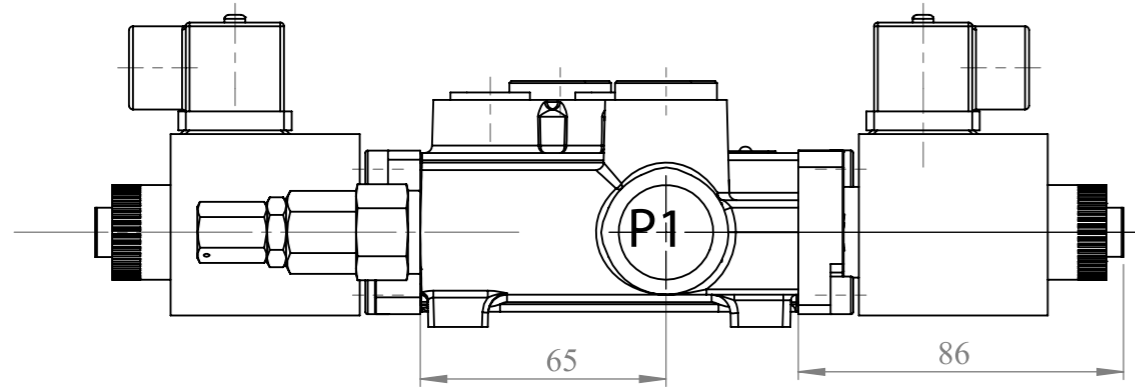


Nominal flow rate: 50 l/min
Operating pressures:
 @ port P - 250 bar
 @ port A, B - 300 bar
 @ port T - 50 bar

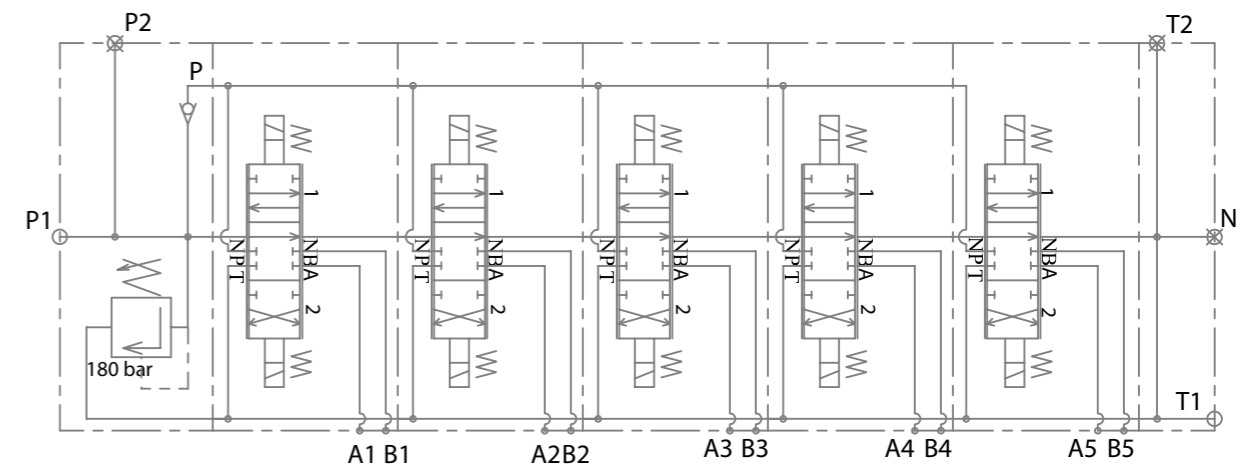
Port threads:
 Port P - BSP G 1/2"
 Port A, B - BSP G 3/8"
 Port T - BSP G 1/2"
 Port N - BSP G 1/2"

Working conditions
 Recommended Oil Viscosity range: 10cSt to 100cSt
 Recommended Oil Filtering: $\beta_{10} \geq 75$
 Max Contamination: class 10 (NAS 1638)
 19/16(ISO 4406)

sheet	1/1		weight (kg)
description	HP-04Z50AAAAES3		15.80



Hydraulic scheme of 05Z50 AAAAA ES3 G 24VDC

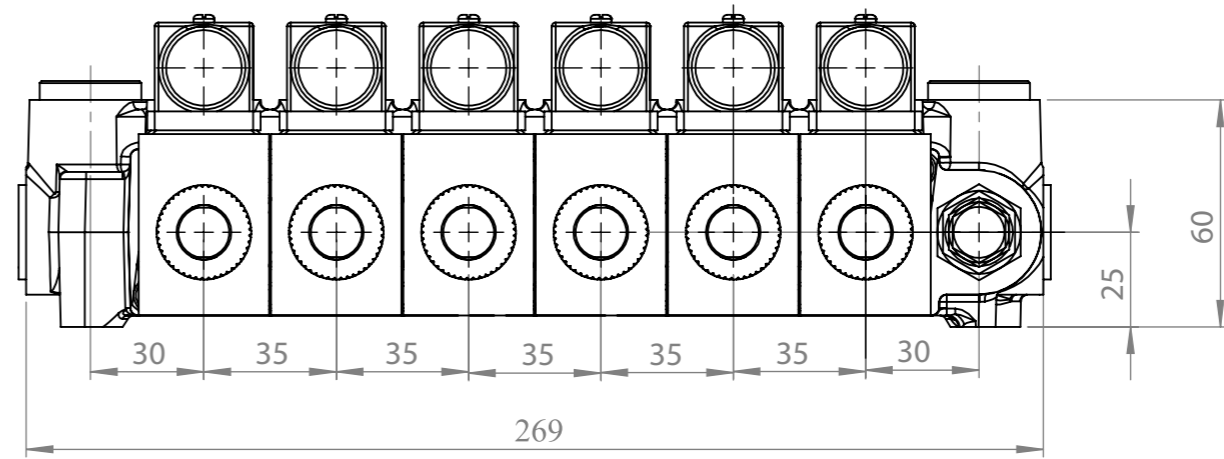
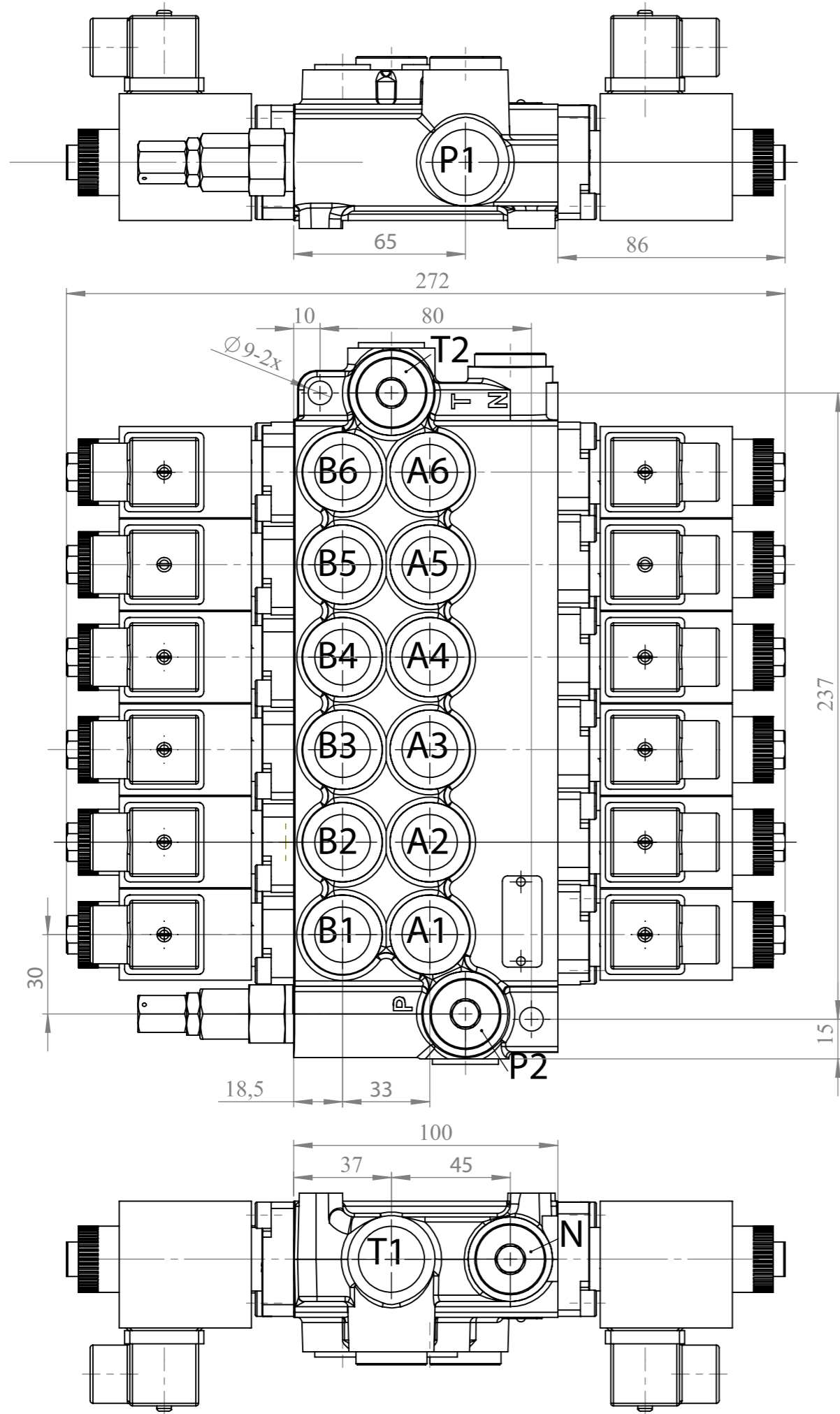


Nominal flow rate: 50 l/min
Operating pressures:
 @ port P - 250 bar
 @ port A, B - 300 bar
 @ port T - 50 bar

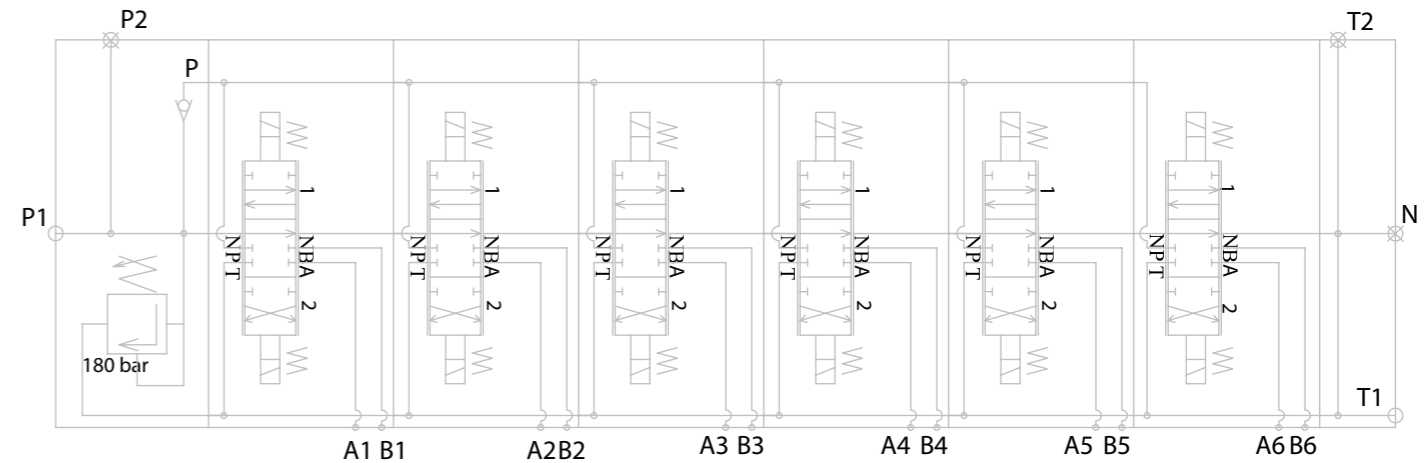
Port threads:
 Port P - BSP G 1/2"
 Port A, B - BSP G 3/8"
 Port T - BSP G 1/2"
 Port N - BSP G 1/2"

Working conditions
 Recommended Oil Viscosity range: 10cSt to 100cSt
 Recommended Oil Filtering: $\beta_{10} \geq 75$
 Max Contamination: class 10 (NAS 1638)
 19/16(ISO 4406)

sheet	1/1		weight (kg)
			19.29
description	HP-05Z50AAAAAES3		



Hydraulic scheme of 06Z50 AAAAAA ES3 G 24VDC



Nominal flow rate: 50 l/min
Operating pressures:
 @ port P - 250 bar
 @ port A, B - 300 bar
 @ port T - 50 bar

Port threads:
 Port P - BSP G 1/2"
 Port A, B - BSP G 3/8"
 Port T - BSP G 1/2"
 Port N - BSP G 1/2"

Working conditions
 Recommended Oil Viscosity range: 10cSt to 100cSt
 Recommended Oil Filtering: $\beta_{10} \geq 75$
 Max Contamination: class 10 (NAS 1638)
 19/16 (ISO 4406)

sheet	1/1		weight (kg)
description	HP-06Z50AAAAAES3		22.92