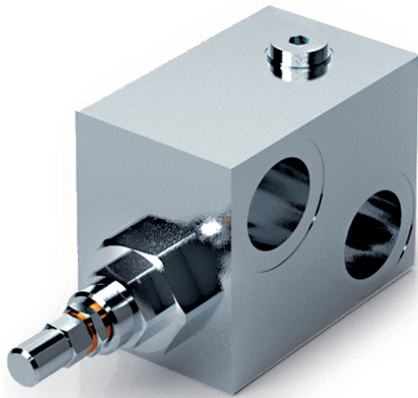
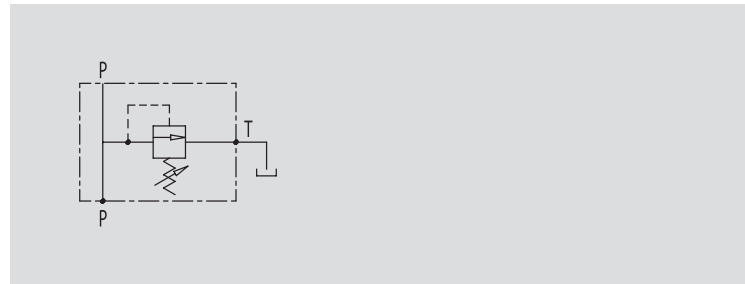


TYPE
VMPP



HYDRAULIC DIAGRAM



DIFFERENTIAL TYPE RELIEF VALVES

USE AND OPERATION:

The relief valve provides overload protection in a fast and accurate way: when it reaches pressure setting, the valve opens allowing pressure relief in order not to exceed this setting. The differential valve opening is slower than the standard one, but the setting is more stable when the flow changes.

MATERIALS AND FEATURES:

Body: zinc-plated steel
Internal parts: hardened and ground steel.
Seals: BUNA N standard
Poppet type: minor leakage

APPLICATIONS:

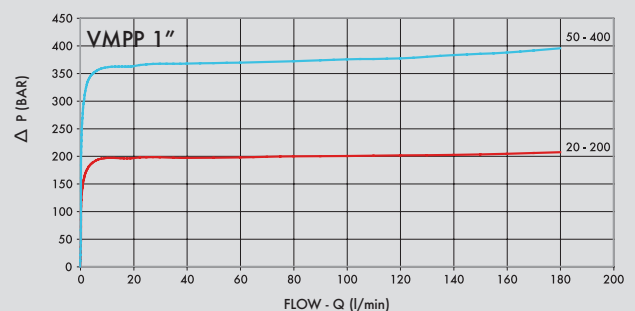
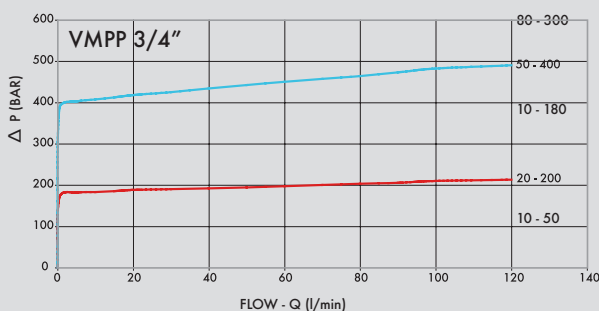
Connect circuit port with pressure to P and tank port to T. The 1" size is supplied with double exit T (1 exit can be capped according with mounting needs).

ON REQUEST

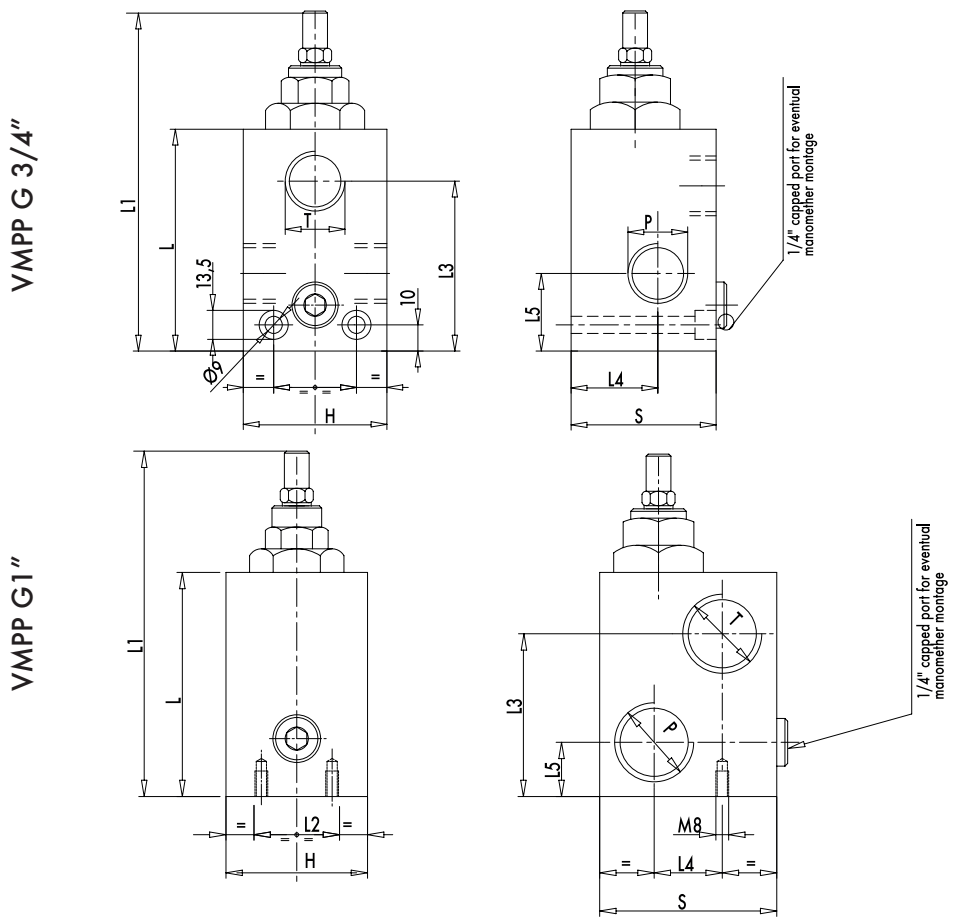
- different setting range (see the table)
- other setting available (CODE/T000 please specify the desired setting)

PRESSURE / FLOW

Oil temperature: 50° C - Oil viscosity: 30 cSt



CODE	TYPE	MAX FLOW Lt. / min
V0725	VMPP 3/4"	120
V0735	VMPP 1"	160



CODE	TYPE	P - T GAS	L mm	L1 mm	L2 mm	L3 mm	L4 mm	L5 mm	H mm	S mm	WEIGHT Kg
V0725	VMPP 3/4"	G 3/4"	94	146	32	70	35	32	60	60	2,200
V0735	VMPP 1"	G 1"	94	146	30	71	34	23	60	80	2,870

SPRINGS

Setting range (bar)	Pressure increase (bar/turn) Q= 4l/min	Standard setting (bar)
20 - 200	40	160
50 - 400 standard	80	180

ADJUSTEMENT

CODE/V	Handknob
CODE/PP	Arranged for sealing cap
CODE/PP	Sealing cap