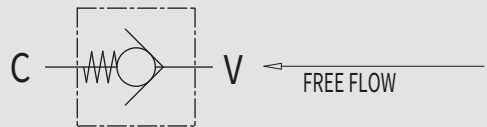


CHECK VALVES

TYPE
VU

HYDRAULIC DIAGRAM



USE AND OPERATION:

In the check valves flow is free in one direction and blocked in the reverse one.

MATERIALS AND FEATURES:

Body: zinc-plated steel
Internal parts hardened and ground steel
Poppet type any leakage.

APPLICATIONS:

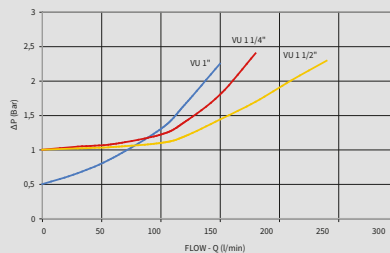
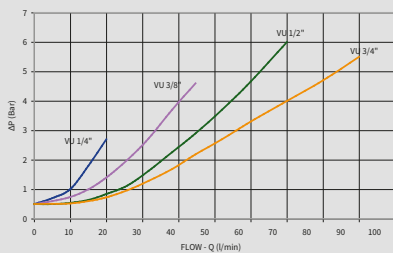
Connect V to the pressure flow and C to the actuator. Flow is free from V to C and blocked in the reverse direction.

ON REQUEST

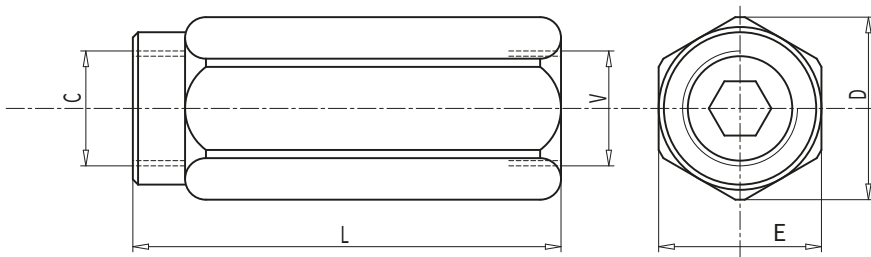
- Different cracking pressures: 1-3-5-8 bar (please specify the desired cracking pressure in the product description). Set valve is used to keep a hydraulic system under pressure.
- **NPT thread (code VN... instead of VO... example: VU 1/4" NPT code = VN590)**
- **Body in stainless steel (CODE/AI example: VU 1/4" INOX code = V0590/AI)**

PRESSURE DROPS CURVE

Oil temperature: 50°C - Oil viscosity: 30 cSt



CODE	TYPE	MAX FLOW Lt./min	MAX PRESSURE Bar	CRACKING PRESSURE Bar
V0592	VU 1/8"	3	350	±0,4/0,7
V0590	VU 1/4"	20	350	±0,4/0,7
V0600	VU 3/8"	45	350	±0,4/0,7
V0610	VU 1/2"	70	350	±0,4/0,7
V0620	VU 3/4"	110	350	±0,4/0,7
V0630	VU 1"	160	350	±0,4/0,7
V0631	VU 1 1/4"	200	350	±0,7/1
V0632	VU 1 1/2"	300	350	±0,7/1



CODE	TYPE	V-C	L	E	D	WEIGHT
		GAS				
V0592	VU 1/8"	G 1/8"	44	14	16	0,038
V0590	VU 1/4"	G 1/4"	62	19	21	0,104
V0600	VU 3/8"	G 3/8"	68	24	26,5	0,184
V0610	VU 1/2"	G 1/2"	77	30	34	0,322
V0620	VU 3/4"	G 3/4"	88	36	40	0,492
V0630	VU 1"	G 1"	105	41	46	0,676
V0631	VU 1 1/4"	G 1 1/4"	135	55	63	1,646
V0632	VU 1 1/2"	G 1 1/2"	145	60	69	1,950