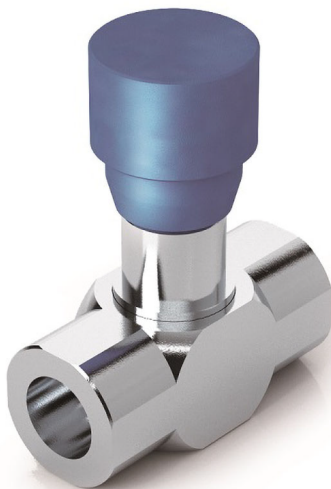
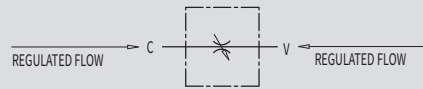


## 7.5 - 90° FLOW REGULATOR VALVES

TYPE  
VRFB 90°



HYDRAULIC DIAGRAM



### USE AND OPERATION

This valve is used to adjust flow speed of actuators in both directions. As pressure compensation is not provided, flow adjustment depends on pressure and fluid viscosity. High adjustment sensitivity.

### MATERIALS AND FEATURES:

**Body:** zinc-plated steel

**Internal parts** hardened and ground steel

**Seal:** BUNA N standard

**Tightness:** needle type. Minor leakage with closed valve.

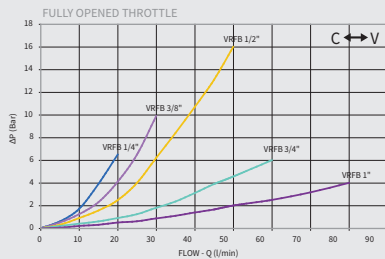
### APPLICATIONS:

Connect a port to the pressure. Flow will be adjusted in the other one. When used on actuator with double pilot check valve, VRFB 90° has to be mounted between the actuator and the double pilot check valve.

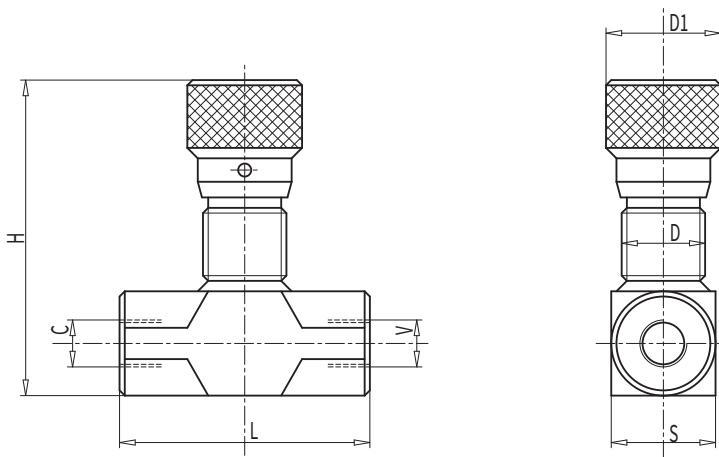
Flow adjustment is made by rotating the plastic hand knob after loosening the side locking screw. This particular configuration allows an accurate and sensitive adjustment.

### PRESSURE DROPS CURVE

Oil temperature: 50°C - Oil viscosity: 30 cSt



CODE	TYPE	MAX FLOW Lt./min	MAX PRESSURE Bar
<b>V0584</b>	VRFB 90° ¼"	15	350
<b>V0586</b>	VRFB 90° ⅜"	30	350
<b>V0587</b>	VRFB 90° ½"	50	350
<b>V0589</b>	VRFB 90° ¾"	80	280
<b>V0577</b>	VRFB 90° 1"	110	250



CODE	TYPE	V - C	L	D	D1	H	S	WEIGHT
		GAS	mm	mm	mm	mm	mm	Kg
<b>V0584</b>	VRFB 90° ¼"	G ¼"	60	M22x1,5	32	82	25	0,366
<b>V0586</b>	VRFB 90° ⅜"	G ⅜"	61	M22x1,5	32	82	25	0,352
<b>V0587</b>	VRFB 90° ½"	G ½"	70	M22x1,5	32	87	30	0,468
<b>V0589</b>	VRFB 90° ¾"	G ¾"	89	M35x1,5	42	108,5	40	1,100
<b>V0577</b>	VRFB 90° 1"	G 1"	90	M35x1,5	42	129	40	1,000