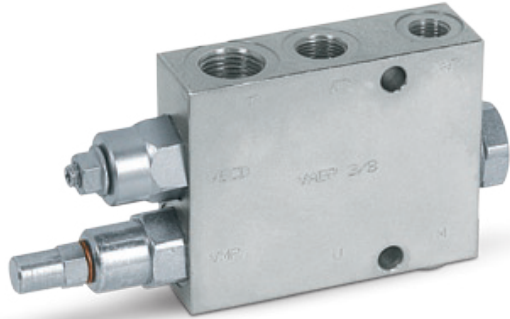


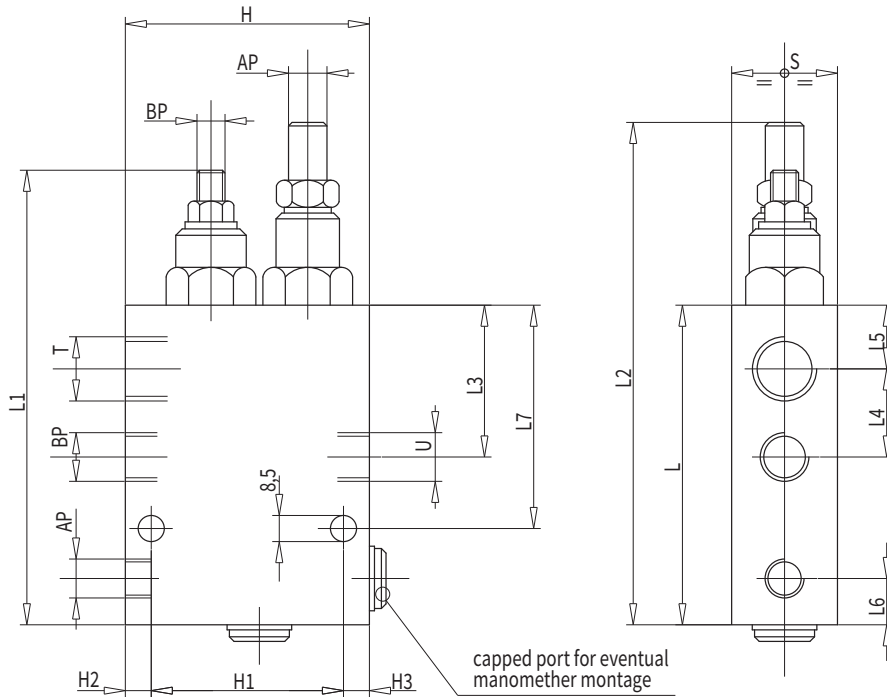


V0514 Two Pump High Low Unloading Valve

This valve is used in a 2 parallel-working pumps circuit in order to release the excess of the higher flow pump to the tank when this gets the required pressure setting. Since this moment and on the actuator works with the lower flow pumps at higher pressure, consuming less energy.



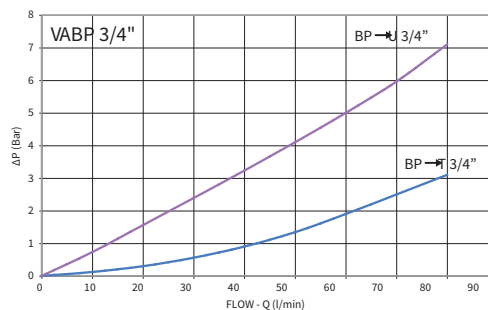
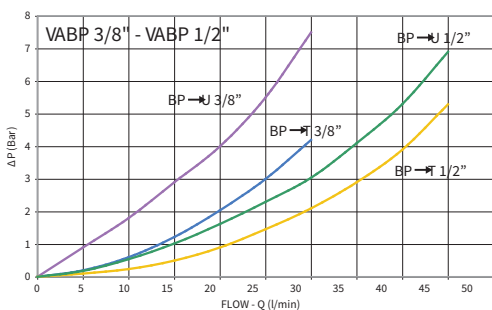
CODE	TYPE	MAX FLOW Lt./min			MAX PRESSURE Bar	WEIGHT
		AP	BP	T		
V0512	VABP 3/8"	15	30	40	350	1,748
V0513	VABP 1/2"	25	45	65	350	2,342
V0514	VABP 3/4"	30	80	100	350	3,970



CODE	TYPE	AP	BP	U	T	L	L1	L2	L3	L4	L5	L6	L7	H1	H2	H3	H	S
		GAS	GAS	GAS	GAS	mm	mm	mm	mm	mm	mm	mm	mm	mm	mm	mm	mm	mm
V0512	VABP 3/8"	G1/4"	G3/8"	G3/8"	G1/2"	100	142	155	50	30	20	13	69	65	8,5	6,5	80	30
V0513	VABP 1/2"	G3/8"	G1/2"	G1/2"	G3/4"	105	147	160	54	36	18	15	73	65	17	8	90	38
V0514	VABP 3/4"	G1/2"	G3/4"	G3/4"	G1"	140	187	212	52,5	42,5	20	20	95	65	27	8	100	40

PRESSURE DROPS CURVE

Oil temperature: 50°C - Oil viscosity: 30 cSt



HYDRAULIC DIAGRAM

