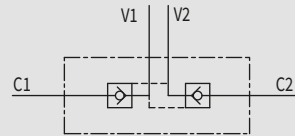


TYPE  
VBPDE 2 CEXC

## 1.2 - DOUBLE PILOT OPERATED CHECK VALVES FOR 12 mm PIPE MOUNTING (DIN 2353)



HYDRAULIC DIAGRAM



### USE AND OPERATION

Pilot check valves are used to block the actuator in both directions. Flow is free in one direction and blocked in the reverse direction until pilot pressure is applied. They are easily assembled on a cylinder. We supply on request fittings kit for mounting on cylinders with a specific centre distance.

### MATERIALS AND FEATURES

**Body:** zinc-plated steel  
**Internal parts** hardened and ground steel  
**Seals:** BUNA N standard  
**Poppet type** any leakage.

### APPLICATIONS

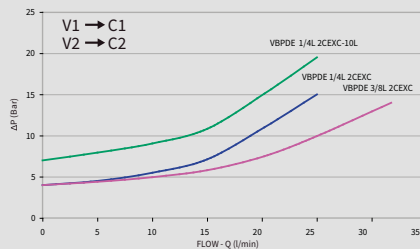
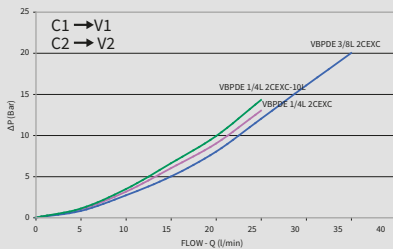
Connect V1 and V2 to the pressure flow and C1 and C2 to the actuator with the pipe.

### ON REQUEST

- without seal on pilot piston
- without nut and olive
- 1 Bar spring
- 8 Bar spring

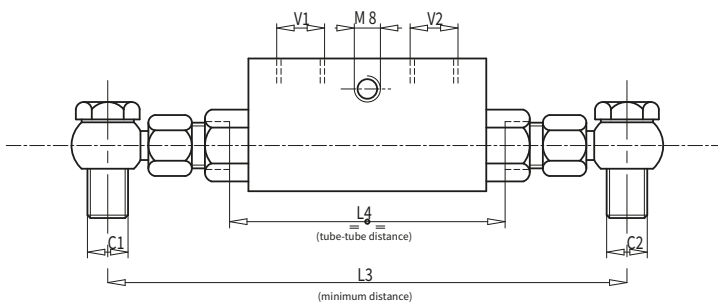
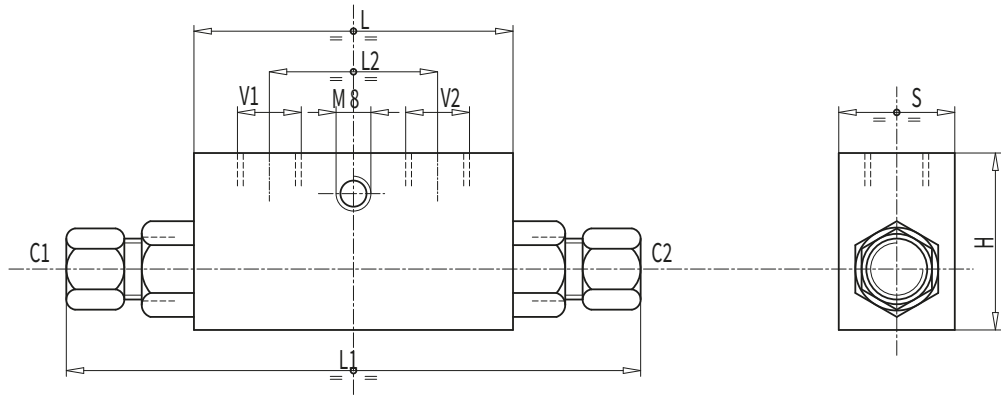
PRESSURE DROPS CURVE

Oil temperature: 50°C - Oil viscosity: 30 cSt



# Double Pilot Operated Check Valves

CODE	TYPE	PILOT RATIO	MAX FLOW Lt./min	MAX PRESSURE Bar	CRACKING PRESSURE Bar
<b>V0090</b>	VBPDE ¼" L 2 CEXC	1:5,5	20	350	4
<b>V0110</b>	VBPDE ¾" L 2 CEXC	1:5,5	30	350	4
<b>V0091</b>	VBPDE ¼" L 2 CEXC - 10	1:5,5	20	350	7



CODE	TYPE	V1-V2	C1-C2	L	L1	L2	L3	L4	H	S	WEIGHT Kg
		GAS	mm	mm	mm	mm	mm	mm	mm	mm	
<b>V0090</b>	VBPDE ¼" L 2 CEXC	G ¼"	12L	64	134	36	160	84	40	30	0,648
<b>V0110</b>	VBPDE " L 2 CEXC	G "	12L	64	134	36	166	84	40	30	0,630
<b>V0091</b>	VBPDE ¼" L 2 CEXC - 10L	G ¼"	10L	64	125	36	160	82	40	30	0,644