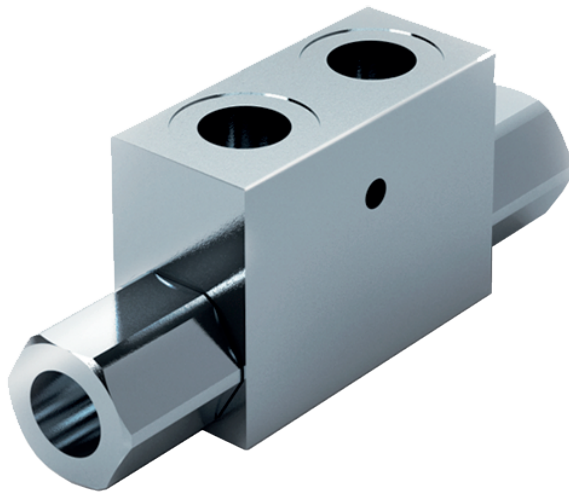
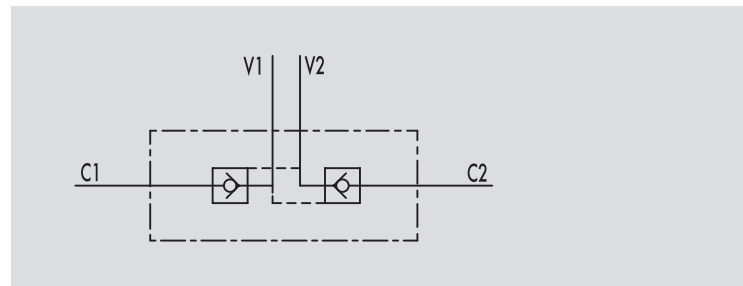


TYPE  
**VBPDE**



HYDRAULIC DIAGRAM



## DOUBLE PILOT OPERATED CHECK VALVES

### USE AND OPERATION:

Pilot check valves are used to block the cylinder in both directions. Flow is free in one direction and blocked in the reverse direction until pilot pressure is applied.

### MATERIALS AND FEATURES:

Body: zinc-plated steel.  
Internal parts: hardened and ground steel.  
Seals: BUNA N standard  
Poppet type: any leakage.

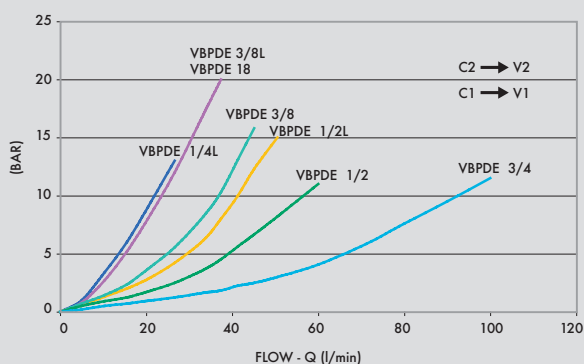
### APPLICATIONS:

Connect V1 and V2 to the pressure flow and C1 and C2 to the actuator.

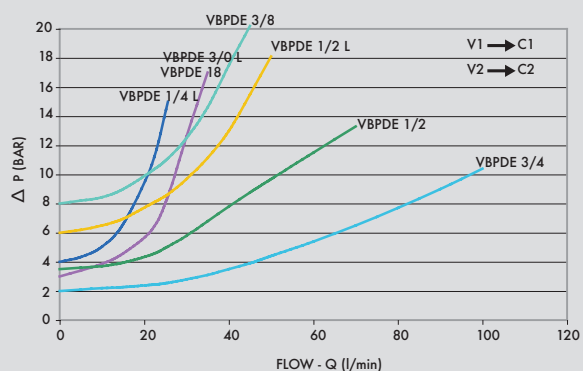
### ON REQUEST

- without seal on pilot piston
- 1 Bar spring
- 8 Bar spring

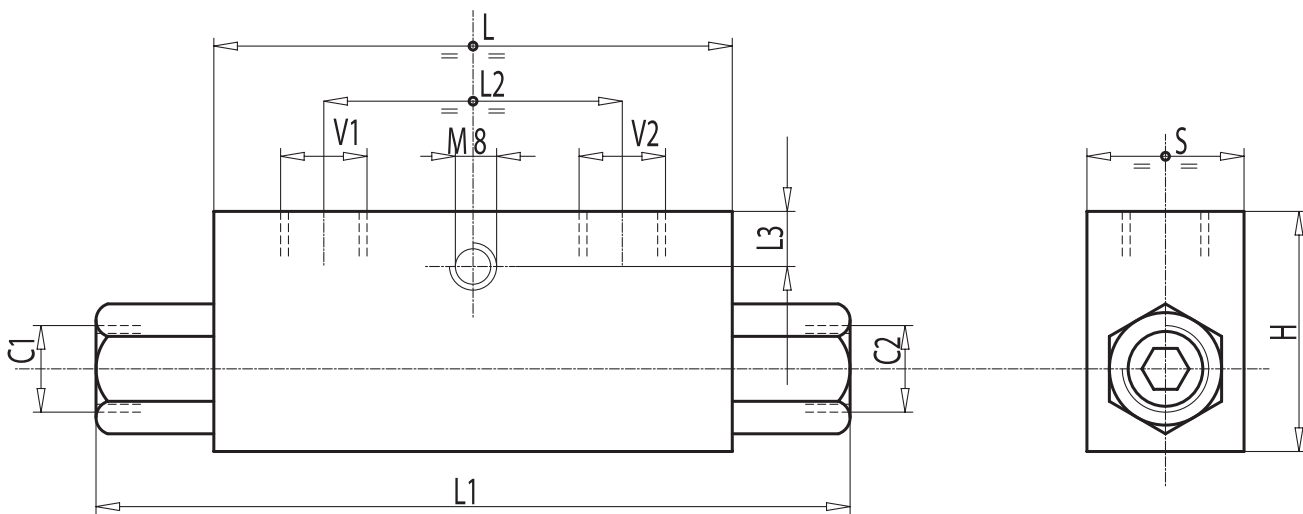
PRESSURE DROPS CURVE



Oil temperature: 50° C - Oil viscosity: 30 cSt



CODE	TYPE	PILOT RATIO	MAX FLOW Lt. / min	MAX PRESSURE Bar	CRACKING PRESSURE Bar
<b>V0010</b>	VBPDE 1/4" L	1:5,5	20	350	4
<b>V0020</b>	VBPDE 3/8" L	1:5,5	35	350	3
<b>V0030</b>	VBPDE 1/2" L	1:5	50	350	6
<b>V0050</b>	VBPDE 3/8 "	1:5	45	350	8
<b>V0061</b>	VBPDE 18 L	1:5,5	20	350	4
<b>V0070</b>	VBPDE 1/2"	1:4	70	350	3,5
<b>V0040</b>	VBPDE 3/4"	1:4	100	300	2



CODE	TYPE	V1 - V2 C1 - C2 GAS - MET	L mm	L1 mm	L2 mm	L3 mm	H mm	S mm	WEIGHT kg
<b>V0010</b>	VBPDE 1/4"L	G 1/4"	64	113	36	8	40	30	0,636
<b>V0020</b>	VBPDE 3/8"L	G 3/8"	80	128	38	8	40	30	0,736
<b>V0030</b>	VBPDE 1/2" L	G 1/2"	90	142	45	12,5	45	35	1,042
<b>V0050</b>	VBPDE 3/8 "	G 3/8"	90	156	45	12,5	45	35	1,174
<b>V0061</b>	VBPDE 18 L	M18X1,5	68	118	38	8	40	30	0,630
<b>V0070</b>	VBPDE 1/2"	G 1/2"	80	144	40	18	60	35	1,284
<b>V0040</b>	VBPDE 3/4"	G 3/4"	100	192	46	12	60	40	1,916