



Tipping Valve - HP-D180PP186C0

The Hydra Part tipping valve is suitable for most single acting tipping gear applications and copes with oil flows up to 180 LPM. The valve has both pneumatic and manual operation and can be mounted directly to a hydraulic tank or chassis mounted as required.

ORDERING CODE

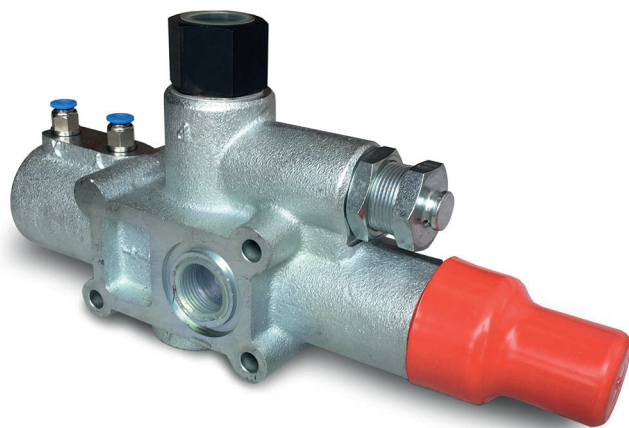
D180 P P XX X XX

MODEL

00 = NO OPTIONALS
CO = PROTECTION CUP

INLET GAUGE
4 = 3/4" GAS STANDARD FEMALE PORT
5 = 3/4" GAS
6 = 1" GAS FEMALE PORT
7 = 1" GAS MALE PORT

PRESSURE RELIEF VALVE SETTING (SEE TABLE)
P = PROGRESSIVE LOWERING
PNEUMATIC CONTROL



DM 180-250 P

TABELLA / TABLE

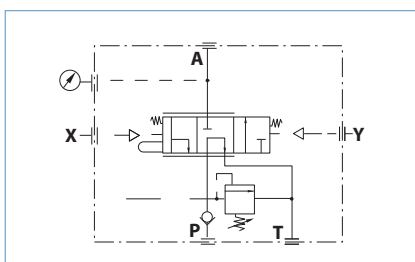
08 ÷ 35 MPa (80-350 bar) with standard relief valve (adjustable)
2B (stand. 140, 220 bar) / piloted relief valve with 2 settings
3B (stand. 130, 220, 350 bar) / piloted relief valve with 3 settings
00 without relief valve (suitable for preset cartridge)

D0 ÷ D9 with adjustable cartridge (from 10 to 19 Mpa)
E0 ÷ E9 with adjustable cartridge (from 20 to 29 Mpa)
F0 ÷ F5 with adjustable cartridge (from 30 to 35 Mpa)
G0 not setting, not plumbed adjustable cartridge

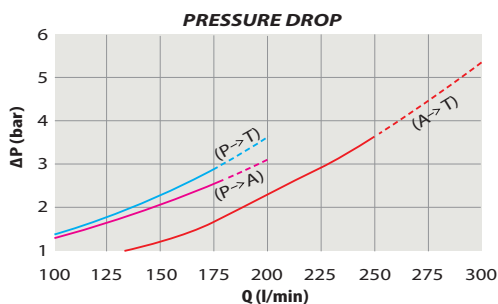
CARATTERISTICHE TECNICHE / TECHNICAL SPECIFICATIONS

Tipping nom. - Max flow rate	180-200 l/min	Fluid temperature °C (t)	-25° + 80°C
Lowering nom. - Max flow rate	250-300 l/min	Viscosity range	12-100 cSt
Max working pressure	300 bar	Filtering ISO 4406 $\beta_x=75$	20/17 25 μm
Max peak pressure (<0.1 s)	450 bar	Weight	8-9 kg
T port max pressure	30 bar	Max pneumatic pressure	12 bar

- Pneumatic controlled distributor, oil flow 180 l/min (tipping), and 250 l/min (lowering), for tippers without trailer (single-acting cylinder).
- It performs tipping, fast and progressive lowering.
- The inlet check valve and the relief valve are built-in. Three models of relief valve are available: adjustable relief valve, interchangeable preset cartridge, piloted relief valve with 2 or 3 possible settings.
- Standard end-of-stroke rope.
- Flange connection to tank and chassis.
- Standard pressure-switch or manometer connection.
- Protection cup (ordering code).



mod. DM 180-250 P



THE ABOVE SPECIFICATIONS REFER TO OIL TYPE ISO VG 46 AT 50°C ($\nu=30$ cSt)

