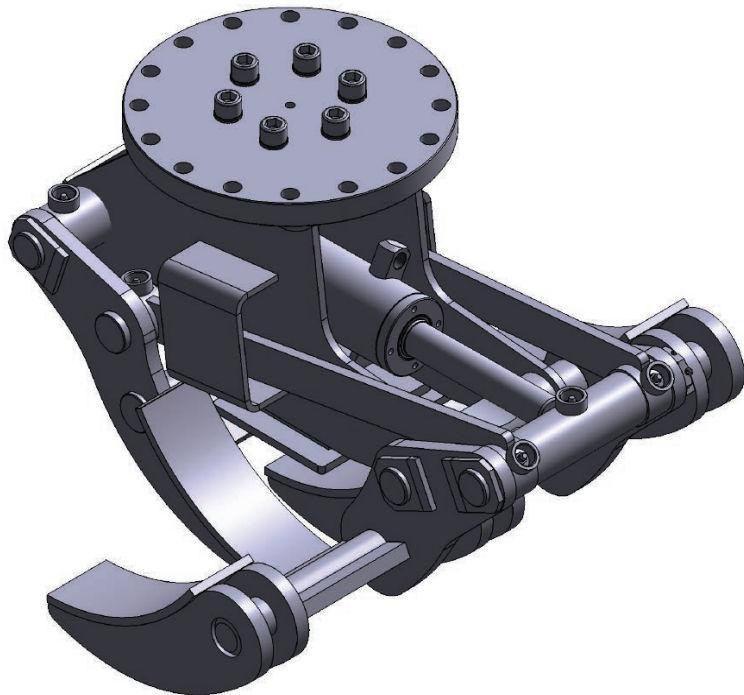
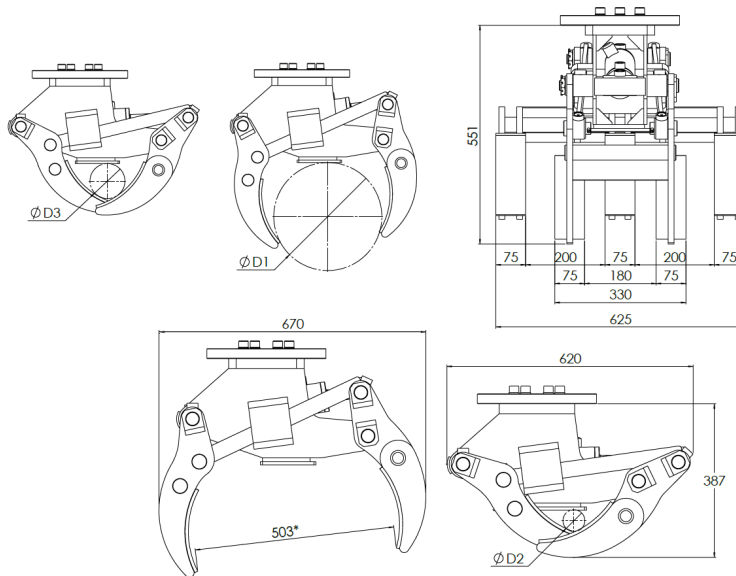


# TIGERGRIP / TG 16 ST-PG



## KEY FEATURES

- Pole grab
- Optimal diam. 110 mm
- Min. diam. 55 mm
- Max. diam. 340 mm
- Polyurethane coated claws
- Double guide bars
- Designed for mounting of worm drive



<b>D1</b>	344
<b>D2</b>	55
<b>D3</b>	110

## MODEL SPECIFICATIONS



TG 16 ST-PG

95

200

40

9

10

1

5