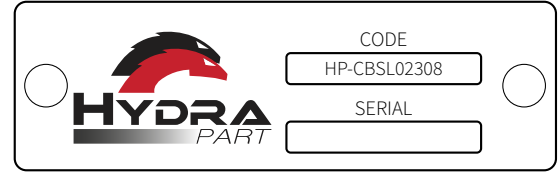
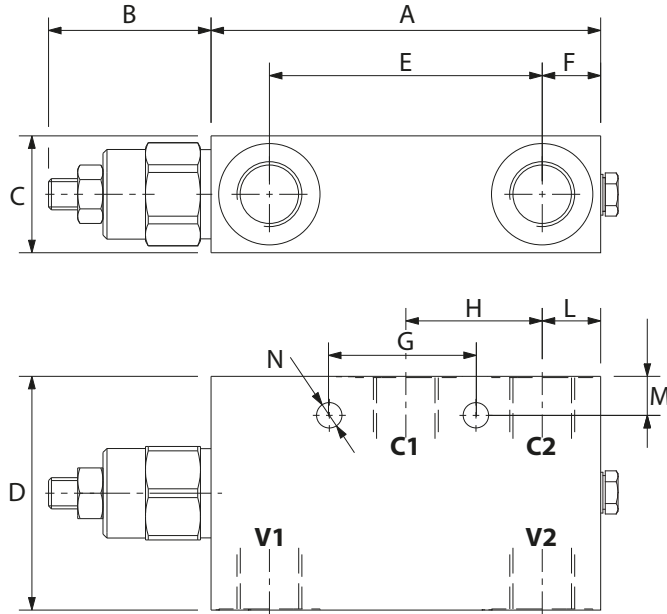


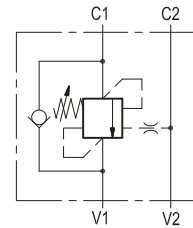
Dimensions



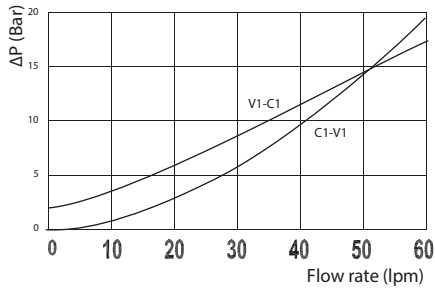
HYDRA PART	MODEL CODE	PORT SIZE (BSP)	PRESSURE RANGE	PILOT RATIO
X	X	X	X	X

Size	A	B	C	C1 - C2 V1 - V2 BSP	D	E	F	G	H	L	M	N	Weight kg
02	109	46	30	3/8	55	71	18	40	39,3	18	8	8,5	1,32
03	109	46	35	1/2	65	71	18	40	39,3	18	8	8,5	1,76

Hydraulic Symbol



Curves



Features

Rated Flow	60 lpm
Max Pressure	350 bar

Notice: Relief setting at least 1,3 times the highest expected load-induced pressure.

Materials: Zinc plated steel manifold, hardened steel inner parts.

Ordering Code

CBSL -- -- -

Port Size BSP		Spring		
Size	Port Size	Pressure Range (bar)	Increase (bar/turn)	Standard Setting (bar) Q=5 lpm
02	3/8	60 - 210	61	200
03	1/2			
		100 - 350	138	350

Pilot Ratio	
	4,2 : 1
8	8 : 1

Ordering Code Example: CBSL0330 = 1/2 BSP Ports - 100-350 bar setting range, 4,2:1 Pilot Ratio.