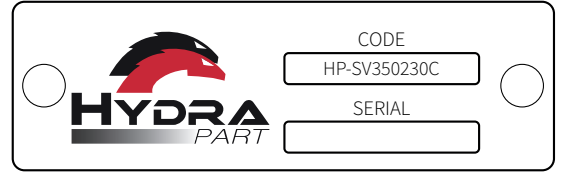
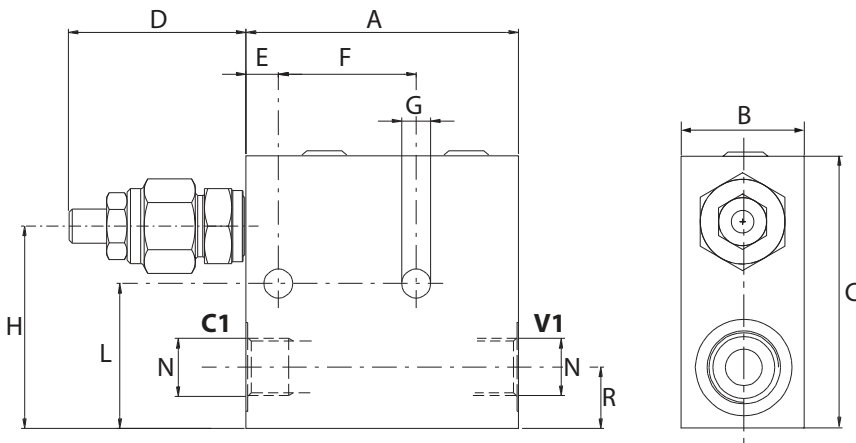


# SV35 Series Sequence Valve



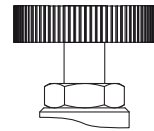
HYDRA PART	MODEL CODE	FLOW (LPM)	PORT SIZE (BSP)	MAX PRESSURE	TAMPERPROOF CAP
<b>X</b>	<b>X</b>	<b>X</b>	<b>X</b>	<b>X</b>	<b>X</b>



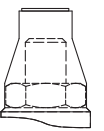
Adjustment 1



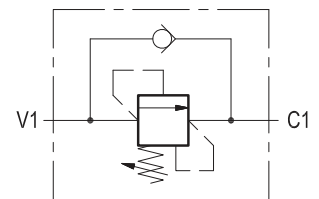
Adjustment 2



Adjustment 3

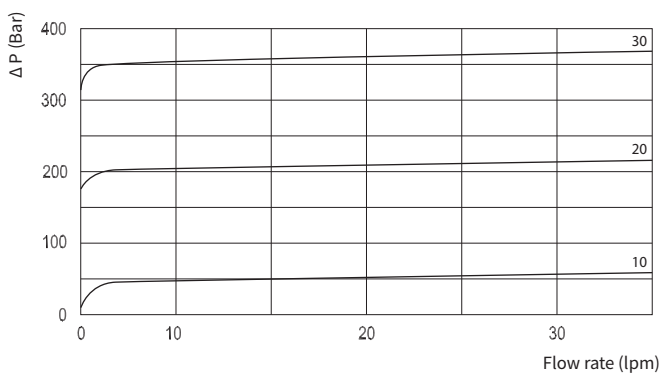


Hydraulic Symbol



Size	A	B	C	D max	E	F	G	H	L	N BSP	R	Weight kg
<b>02</b>	80	35	80	61	10	40	8,5	59	42,5	3/8	18	0,72
<b>03</b>	80	35	80	61	10	40	8,5	59	42,5	1/2	18	0,70

## Curves



## Features

<b>Rated Flow (lpm)</b>	35
<b>Max Pressure (bar)</b>	260

**Materials:** Zinc plated steel cartridge, hardened steel inner parts.  
Aluminium manifold.