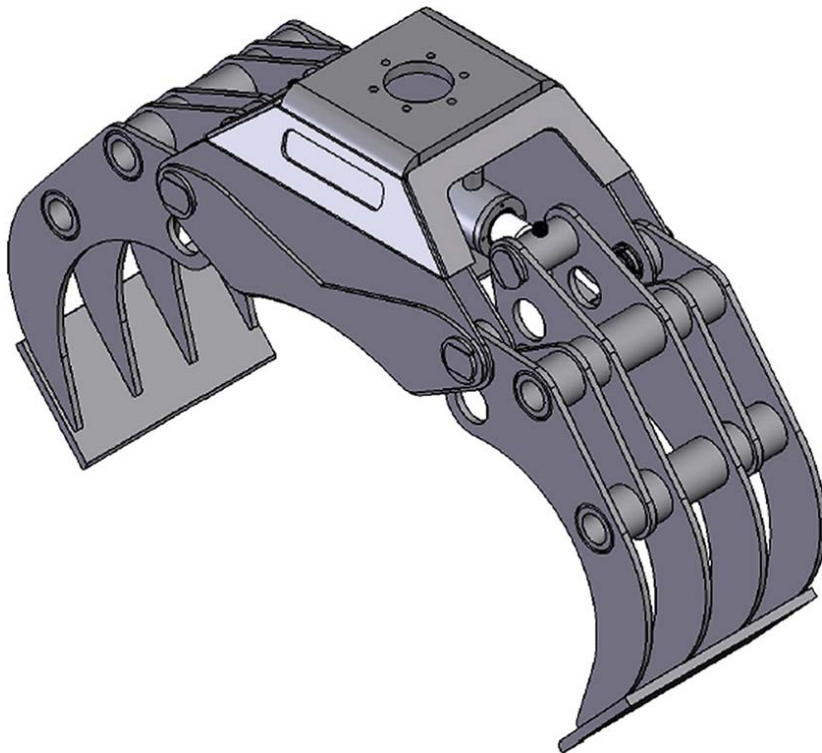
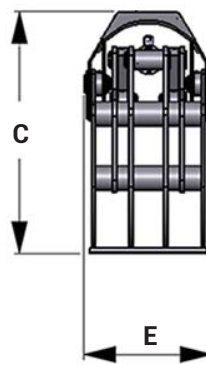
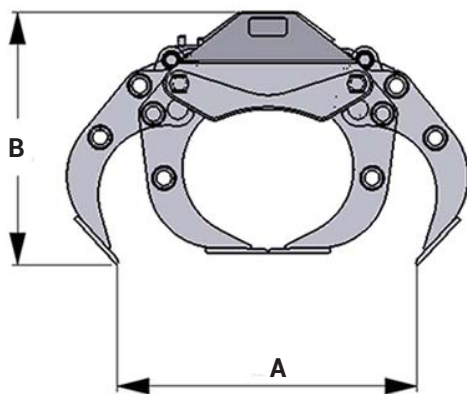


# TIGERGRIP / TG 28 ST



## KEY FEATURES

- Heavy duty
- Double guide bars
- High pressure cylinder with double piston rod seals
- High tensile wear resistant steel (400 HB)
- Extra reinforced body for rigid mounting - excavator design
- High tensile wear resistant steel cutting edges



<b>A</b>	1510
<b>B</b>	704
<b>C</b>	846
<b>E</b>	512

## MODEL SPECIFICATIONS



TG 28 ST	304	0,26	300	60	16,2	15	5	15	10			
----------	-----	------	-----	----	------	----	---	----	----	--	--	--



Call for advice on: 0844 770 7969 e-mail us: [sales@approvedhydraulics.co.uk](mailto:sales@approvedhydraulics.co.uk)