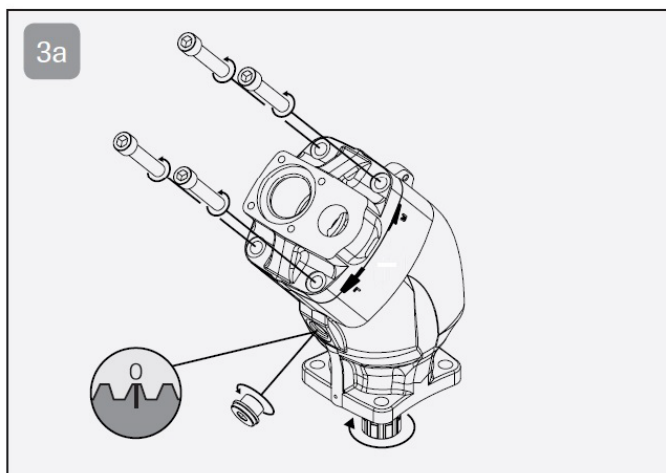
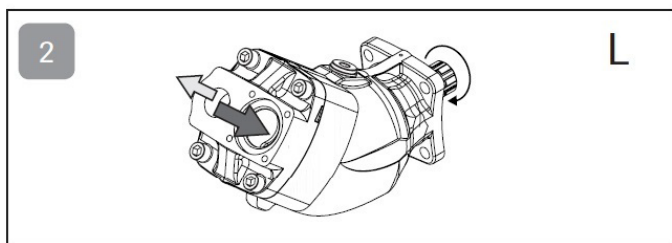
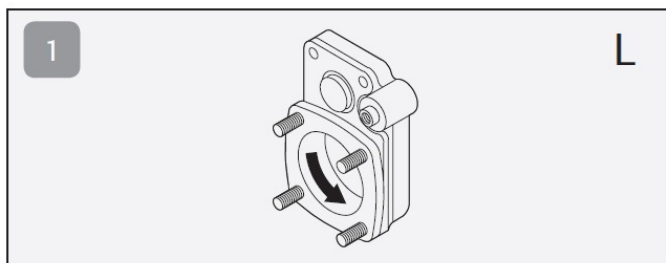
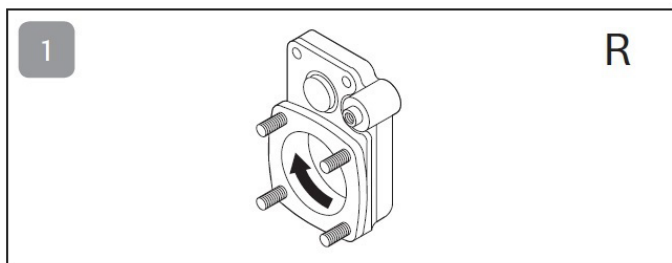


INSTALLATION GUIDE



INSTALLATION GUIDE

1 CHECK THE DIRECTION OF ROTATION OF THE POWER TAKE OFF

2 THE ROTATION DIRECTION OF THE PUMP

Left
As delivered.

3a. Right
Change the direction of rotation.
Check that the markings on the teeth are aligned as shown.

3b. Turn the cover 180°
The solid arrow indicates the direction of rotation.

DO NOT LIFT THE COVER

3c. Tightening torques
Check that the markings on the teeth are aligned as shown.

Type of pump	Nm
HPTP 012, 017, 025, 034	70
HPTP 040, 047, 056, 064	70
HPTF 080, 090	70
HPTP 084, 108	100
HPTF 130	100

4. Fill the housing with hydraulic oil

5. Installing the pump:

Grease the splined shaft before installation. Use assembly paste for example Molykote G Rapid plus or similar.

Do not tap the gearwheel/driver into position.

Gearwheel: Use an M12 stud and sleeve.

Driver: Use an M2 stud and washer.

Lock the gear wheel with a retaining ring or an M2 bolt and locking fluid. Lock the O-ring and install the pump on the power take off.

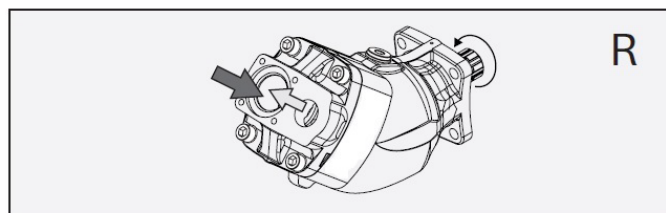
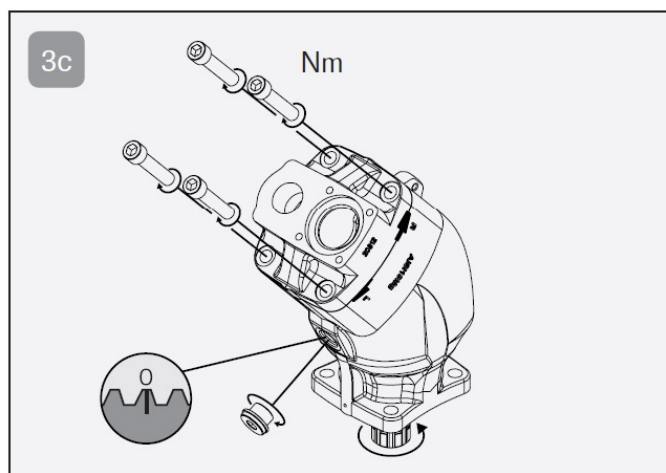
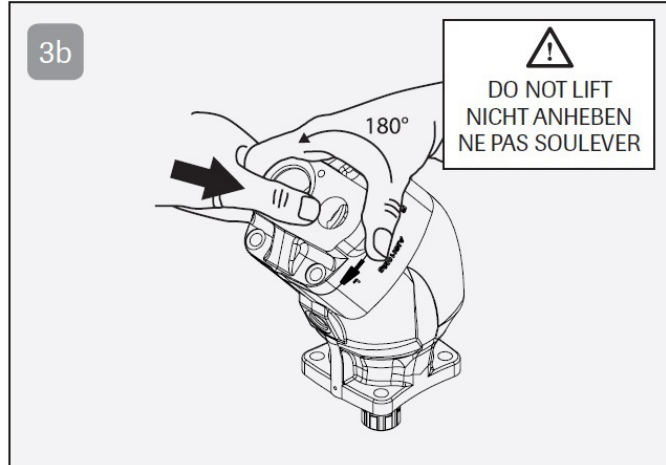
Refer to Service Information 748 for installation with intermediate shaft.

6. Suction Line

Connect the suction line, tighten the suction connection bolts in diametric pairs. Tighten the hose with two robust hose clamps.

Connect the pressure line.

WARNING! Tapered pressure connection not allowed. Only pressure connections with seal washer should be used.

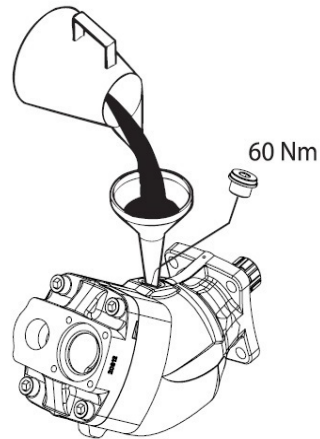


WARNING

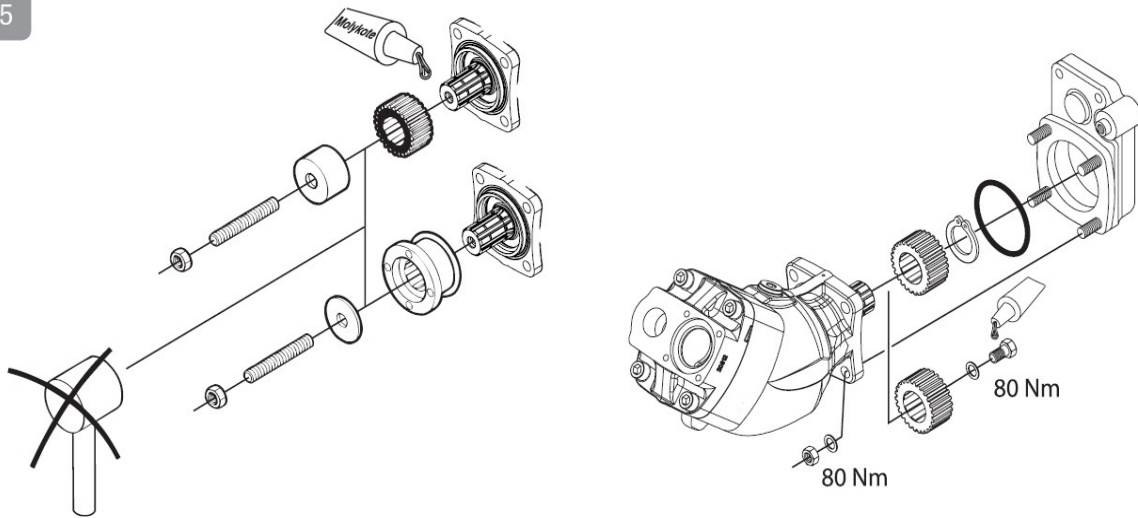
When the pump is in operation:

- 1 Never touch the pressure line
- 2 Watch out for rotating parts (applies to installation with intermediate shaft).

4



5



6

- 38 mm (1½")
Q_{max} = 65 l/min
- 50 mm (2")
Q_{max} = 120 l/min
- 64 mm (2½")
Q_{max} = 185 l/min
- 75 mm (3")
Q_{max} = 265 l/min

