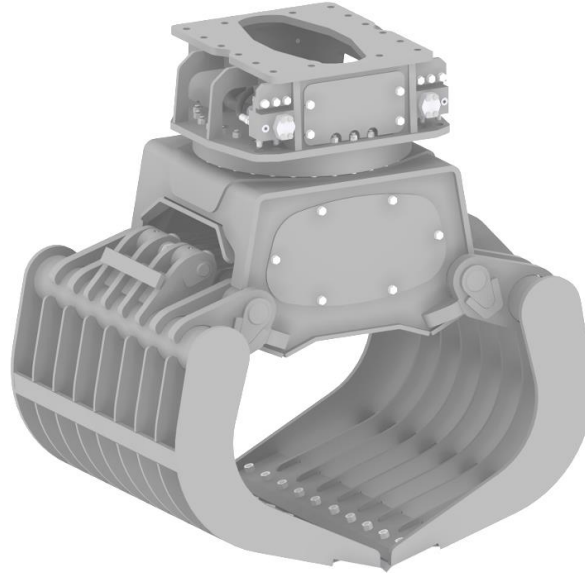




MBD

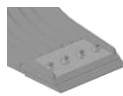
MBD 700



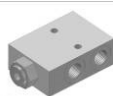
Standard (¹ MBD 50 & 250 - ² MBD 350 & 600 - ³ MBD 700 & 800)



DENTE GRIGLIATO
"R"
GRILLED TOOTH
"R"
DENTS À GRILLE
"R"
GITTERARTIG
ZAHN "R"



LAMA
IMBULLONATA
BOLTED BLADE
LAME BOULONNÉE
MIT SCHRAUBEN
BEFESTIGTES
MESSER



VALVOLA DI
BLOCCO
VALVE BLOCK
VALVE DE
BLOCAGE
SPERRVENTIL



ATTACCO FISSO
¹MA - 6 F ST
²MA - 10 F ST
³MA - 15 F ST



GIREVOLE MECC.
360°
¹GM 4 F
²OM 10 S
³OM 15 S



GIREVOLE IDR.
¹GV 6
²OR 2 S
³OR 1 S

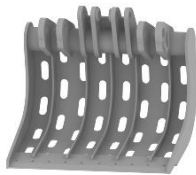


GIREVOLE IDR.
VERT.
¹BP 5 - OR 2 I S - I
VS
¹OR 2 IV - VS
²OR 1 S - V/V S
³OR 7 V/V S

On Request (¹ MBD 50 & 250 - ² MBD 350 & 600 - ³ MBD 700 & 800)



DENTE CHIUSO "C"
CLOSED TOOTH "C"
DENTS FERMÉES
"C"
GESCHLOSSEN
ZAHN "C"



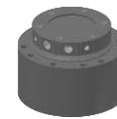
DENTE CHIUSO
"CF"
CLOSED TOOTH
"CF"
DENTS FERMÉES
"CF"
GESCHLOSSEN
ZAHN "CF"



ATTACCO FISSO
¹MA - 6 M ST
²MA - 10 M ST
³MA - 15 M ST



GIREVOLE IDR.
²GV 12 S



GIREVOLE IDR.
VERT.
²BP 9



GANCI
HOOKS
CROCHETS
HAKEN

Accessories (¹ MBD 50 & 250 - ² MBD 350 & 600 - ³ MBD 700 & 800)



¹MA - 6 SM
²MA - 10 SM
³MA - 12 SM



¹MA - 6 SF
²MA - 10 SF
³MA - 12 SF



¹MA - 6 FF
²MA - 10 FF
³MA - 12 FF



¹MA - 6 MF
²MA - 10 MF
³MA - 12 MF



¹MA - 6 MM
²MA - 10 MM
³MA - 12 MM

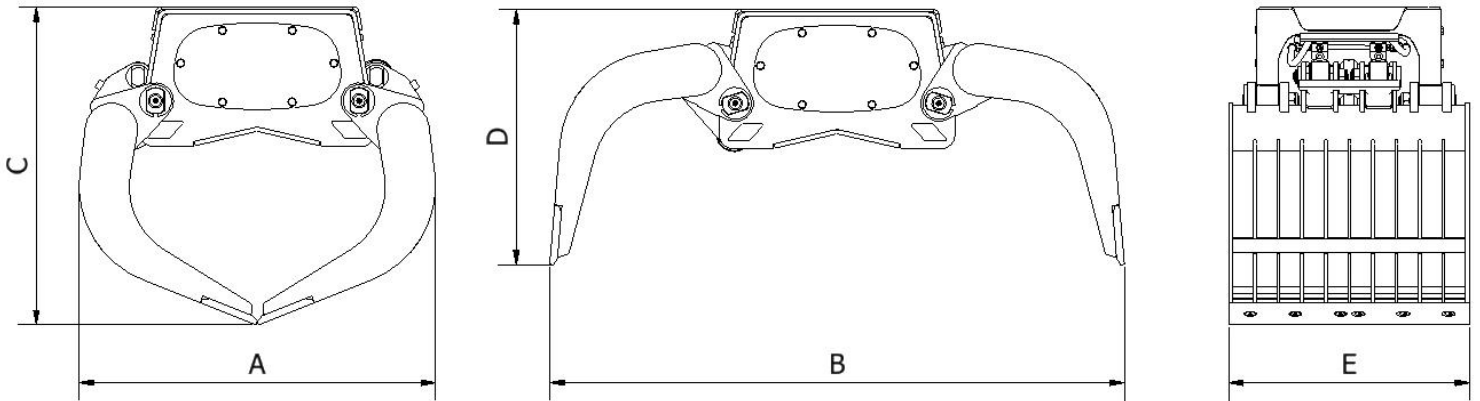


¹MA - 6 FM
²MA - 10 FM
³MA - 12 FM



SELLA
MA - SE

MBD



MODELLO MODEL MODÈLE MODELL	SUPERFICIE SURFACE SURFACE FLÄCHE	CAPACITA' CAPACITY CAPACITÉ INHALT	PESO WEIGHT POIDS GEWICHT	CILINDRI CYLINDERS CYLINDRES ZYLINDER	DIMENSIONI (mm) SIZES (mm) DIMENSIONS (mm) ABMESSUNGEN (mm)				
					A	B	C	D	E
MBD 50	0,2	50	160	1	730	1200	690	620	380
MBD 100	0,3	100	180	1	830	1450	830	660	380
MBD 250	0,4	250	350	1	1180	1780	910	720	600
MBD 350	0,4	350	400	1	1180	1780	910	720	850
MBD 450	0,4	450	500	1	1180	1780	910	720	1000
MBD 500	0,5	500	600	1	1270	2030	980	680	1000
MBD 600	0,55	550	820	2	1230	1980	1130	880	920
MBD 700	0,7	700	910	2	1310	2185	1205	915	920
MBD 800	0,8	800	1000	2	1440	2350	1440	940	1000

MODELLO MODEL MODÈLE MODELL	PORTATA LOAD CAPACITY PORTÉE LEISTUNG	FORZA FORCE FORCE KRAFT	PRESSIONE PRESSURE PRESSION DRUCK		PORTATA OLIO REC OILFLOW DEBIT DURCHSATZ		TEMPI TIMES TEMPS ZEITE		MACCHINA MACHINE MACHINE MASCHINE
			MAX BAR		L/min		sec		
	t	t	CLOSE	OPEN	CLOSE	OPEN	CLOSE	OPEN	t
MBD 50	1,5	1,8	300	280	30	30	1,5	1	3-5
MBD 100	1,5	1,5	300	280	30	30	1,5	1	3-5
MBD 250	2	2,8	300	280	70	70	1,5	1	5-10
MBD 350	2	2,8	300	280	70	70	1,5	1	7-12
MBD 450	2,5	2,8	300	280	70	70	1,5	1	10-14
MBD 500	2,5	2,4	300	280	70	70	1,5	1	13-16
MBD 600	5	5.5	320	300	140	130	1,5	1	14-20
MBD 700	6	4.7	320	300	140	130	1,5	1	16-23
MBD 800	7	4.5	320	300	140	130	1,5	1	22-30



Unit 15 Vauxhall Industrial Estate Greg
Street, Reddish
Stockport
SK5 7BR
United Kingdom
Telephone: 0844 770 7969
web: www.approvedhydraulics.co.uk