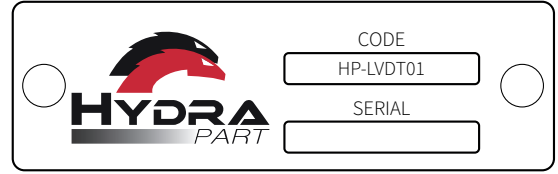


# LVDT - Dual Pilot Check Valve - In Line

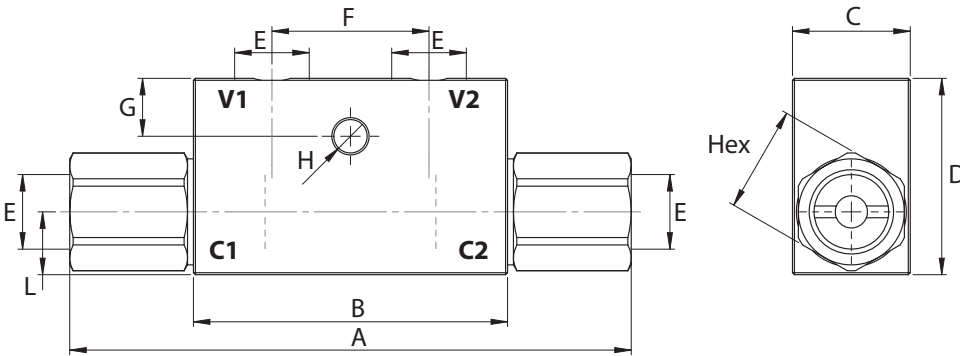
Connect the actuator ports to be controlled to C1 and C2, and connect the pressure flow to V1 and V2. When pressure is applied to port V2 the valve allows flow from port C1 to V1 and likewise when pressure is applied to port V1 it allows flow from port C2 to V2.



HYDRA PART  
MODEL CODE  
PORT SIZE (BSP)

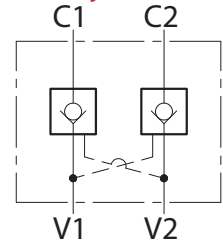
**X** **X** **X**

## Dimensions

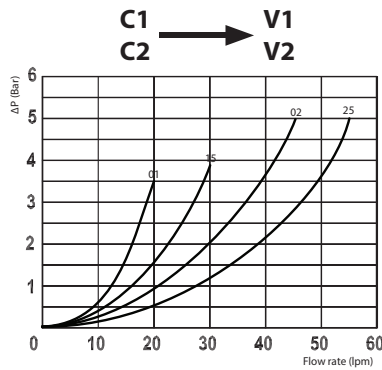
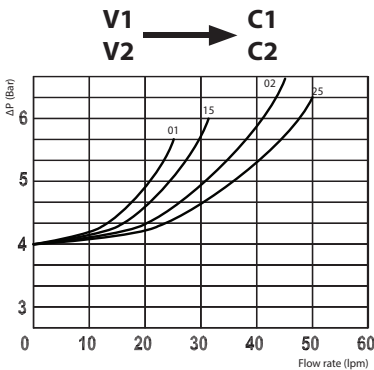


Size	A	B	C	D	E BSP	F	G	H	L	Hex	Weight kg
01	117	68	30	40	1/4	38	7	7	13	24	0,67
15	117	68	30	40	3/8	38	7	7	13	24	0,63
02	143	80	30	50	3/8	40	15	8,5	16	27	0,96
25	143	80	30	50	1/2	40	15	8,5	16	27	0,89

## Hydraulic Symbol



## Curves



## Features

Size	01	15	02	25
Max Pressure (bar)	350	350	300	300
Max Flow (lpm)	25	30	45	50
Pilot Ratio	1:4.6	1:4.6	1:4	1:4
Cracking Pressure (bar)	4	4	4	4

**Materials:** Zinc plated steel body, hardened steel inner parts.