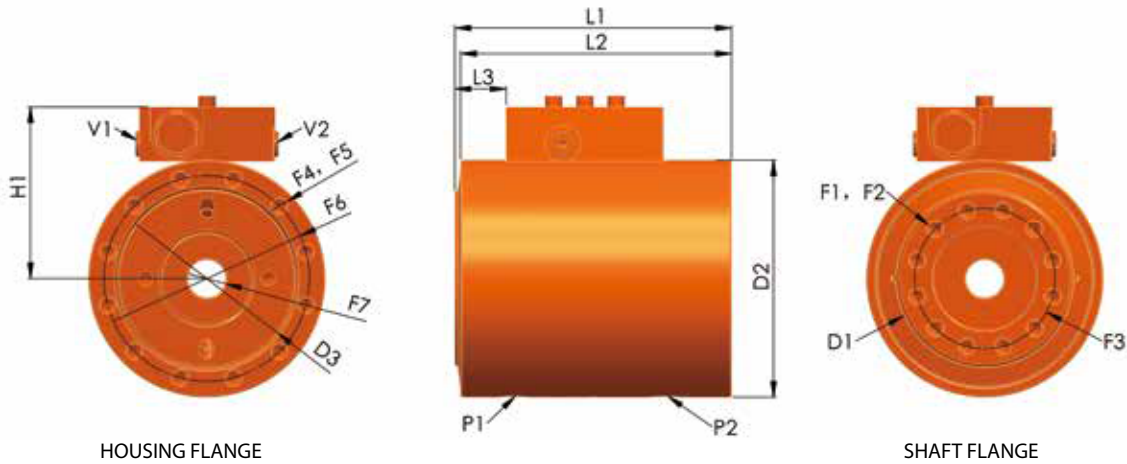


LS1 SERIES



LS1 SERIES						
MODELS	2	3	6	10	16	27
Drive Torque Nm@21MPa	180	320	600	1000	1600	2700
Holding Torque Nm@21MPa	630	1200	1900	3800	5700	9400
Moment Capacity, Cantilever mount Nm	560	1000	2200	5600	9000	11200
Radial Capacity kg	900	1350	1850	3600	4980	6700
Axial Capacity kg	900	1350	1850	3600	4980	6700
Displacement 180°	63.9	121	192	365	552	914
Displacement 360°	---	243	384	733	1105	1829
Weight 180° kg	6.4	10	14.2	26	43.3	57
Weight 360° kg	---	12.8	19.2	35	54.5	83
Shaft mounting surface diameter mm	77.2	89	102	127	148	185

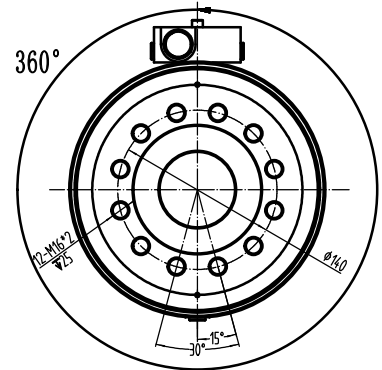
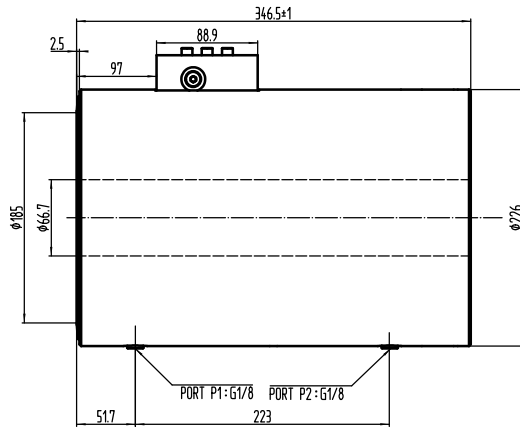
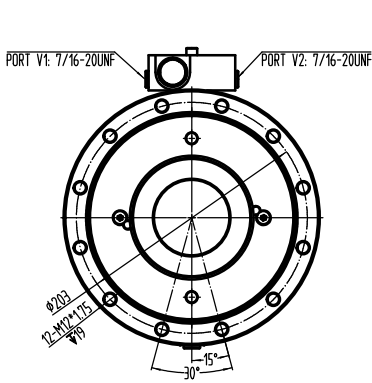


PRODUCT SPECIFICATION

LS1 SERIES						
MODELS	2	3	6	10	16	27
D2 Housing diameter mm	100	119	135	170	198	226
F1 Mounting holes, shaft flange	M8×1.25	M8×1.25	M10×1.5	M12×1.75	M12×1.75	M16×2
F2 Number of mounting holes, shaft flange	8	8	12	12	12	12
F3 Bolt circle diameter, shaft flange mm	54	73	80	102	127	140
F4 Mounting holes, housing flange	M8×1.25	M8×1.25	M10×1.5	M12×1.75	M12×1.75	M12×1.75
F5 Number of mounting holes, housing flange	8	8	12	12	12	12
F6 Bolt circle diameter housing flange mm	86	103	117	151	175	203
F7 Shaft through-hole diameter mm	14.3	17	21.4	35.7	45.7	66.7
H1 Centerline to valve top mm	80	90	98	115	129	143
L1 Overall Length (180°) mm	140	143	156	184	224	241
L1 Overall Length (360°) mm	—	189	212	258	311	346
L2 Overall Length, non-rotating 180°	138	142	154	182	221	239
L2 Overall length, non-rotating 360°	—	188	211	256	308	344
L3 Shaft flange to counterbalance valve 180°	25.4	26.9	27.7	27.9	38.6	43.9
L3 Shaft flange to counterbalance valve 360°	—	22.6	24.6	42.7	60.2	70.4
P1, P2 Ports, housing	ISO-1179"G"Series of ports. Sizes vary from 1/8 to 1/4. See drawings for details					
V1, V2 Ports, valve	ISO-11926/SAE Series of ports. Sizes are 7/16. See drawings for details.					

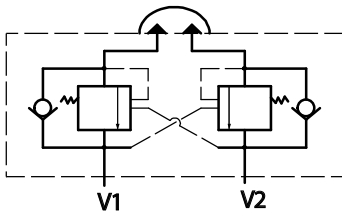


PRODUCT SPECIFICATION



AS PRESSURE IS DIRECTED TO PORT V1, THE SHAFT WILL ROTATE 360° COUNTER-CLOCKWISE

COUNTER BALANC VALVE



Relieve pressure: 22Mpa  
Pilot ratio: 3:1

PERFORMANCE SPECIFICATIONS

ROTATED TORQUE (N·m)	2700
RATED PRESSURE (Mpa)	21
ROTATION (°)	360
DISPLACEMENT (cc)	1829
TEST PRESSURE (Mpa)	31
OPERATING TEMPERATURE (°C)	-17/+71
BREAKAWAY PRESSURE (Mpa)	3.1MAX
MAXIMUM BACKLASH (°)	0.42
APPROXIMATE WEIGHT (KG)	83
STRADDLE MOMENT (N·m)	
CANTILEVER MOMENT (N·m)	11200
RADIAL CAPACITY (KG)	6700
AXIAL CAPACITY (KG)	6700