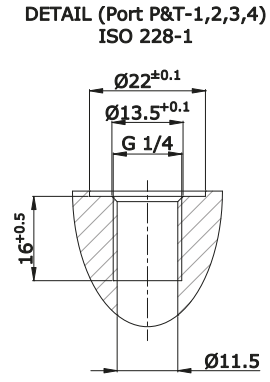
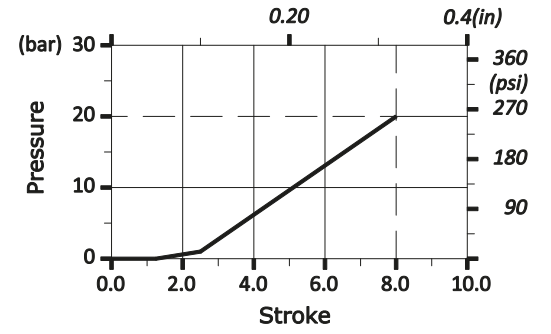
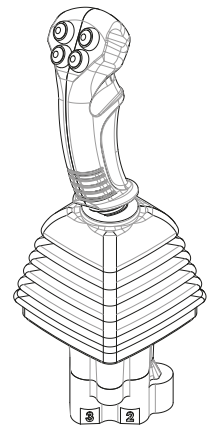


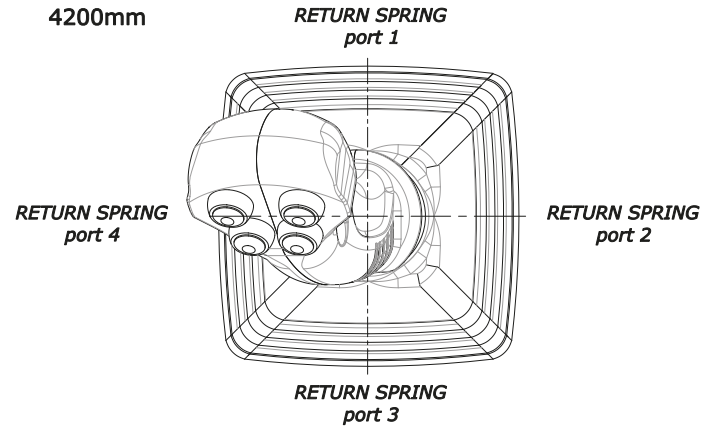
CURVE DIAGRAM
Port 1-2-3-4
without step
30 05 6214



ISOMETRIC VIEW



Electrical cable
4200mm



WORKING CONDITIONS		
Nominal flow rating	from 5 to 20l/min	
Max. feeding pressure (P)	from 30 to 100 bar	
Max. back pressure (T)	3 bar	
Max. hysteresis	0.5 bar	
Hydraulic fluid	Mineral base oil	
Viscosity range	from 12 to 400mm ² /s	
Seal material	NBR	
Fluid temperature		
with NBR seals	from - 10° to 80°C	
operating range	from 15 to 75 mm ² /s	
Max. level of contamination	-/15/12 - ISO 4406	
Internal leakage (all ports)	2.5 to 4.5cm ³ / min at 30 bar 40 °C at 46mm ² /s	
Port size	Inlet P	G1/4
	1,2,3,4 ports	G1/4
	Outlet T	G1/4
Color	-	

