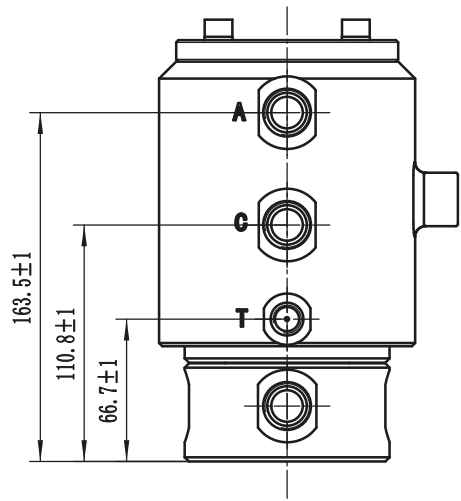
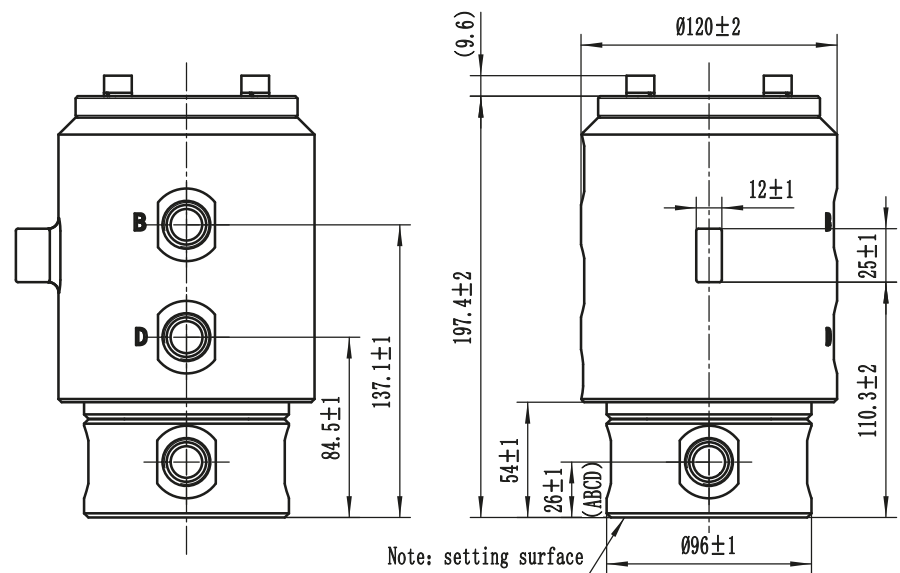
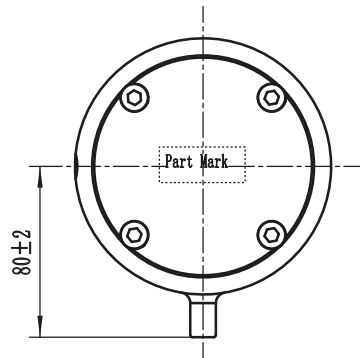


Item (I)					
Max. Rotary Speed (RPM)			15		
Use temperature			-30° C~100° C		
Viscosity			13cst~450cst		
Hydraulic Oil			suggest use N46		
Item (II)					
Oil port	Oil port size	Flow L/min	Work pressure MPa	Test pressure MPa	Remark
A, B, C, D	G1/2"OR	100	30	45	
T	G1/4"OR		0.3	1	Oil drain, do not block F-hole (suggest directly returns to oil tank)



Note: setting surface
6.3



Techniques Require

1. All parts must be cleaned before assembly;
2. After the installation, the oil hole do pressure test. The test pressure is shown in the sheet.
3. Pressure loss of main oil line ≤ 0.7mpa, leakage amount of each hydraulic pipeline ≤ 10mL/min;
4. Seal plug each oil port after passing the test;
5. The exposed surface of the product shall be sprayed with anti-rust black paint;
6. The thread oil port should follow JIS B 2351;
7. Product identification is clearly visible.

Center Rotary Joint	INTRJC4-1/2		
Drawing	S1		1:2.5