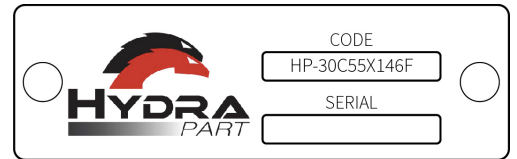




Aluminium Group 3 Gear Pump Range

Hydra Part aluminium gear pumps are a standard three piece design, incorporating a full cast iron face plate and rear cover with an aluminium body. Available in a wide range of sizes, flanges, shafts and port arrangements.



- FLANGE MOUNTING HOLES Ø11MM
 - PRESSURE RANGE (180-250 bar)
 - DRIVE SHAFT
 - DISPLACEMENT
 - ROTATION
 - GROUP REF.
 - HYDRA PART
- X

X

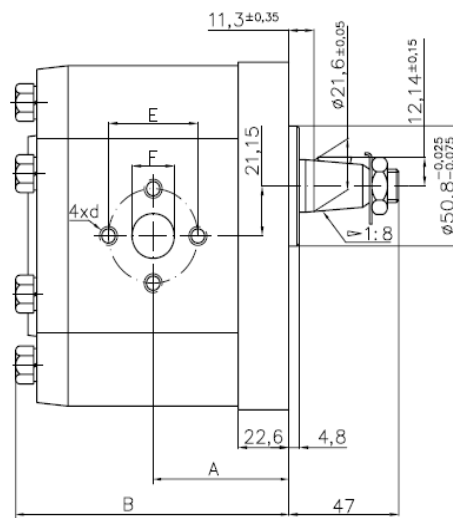
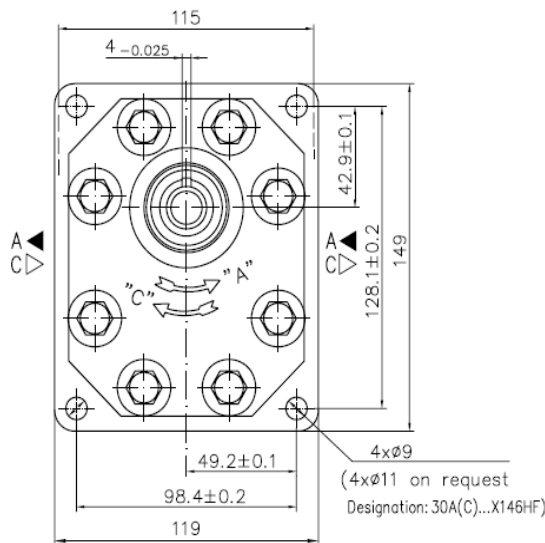
X

X

X

X

X



TYPE	Displacement cm ³ /rev	FLOW		Preassure P nom BAR	Max Speed n rpm	Dimention						
		at 1500rpm l/min	at max rpm l/min			Inlet			Outlet			
				A	B	E	F	d	E	F	d	
30A(C)20X002HF	20	28.2	56.4	250	3000	56.1	116.7	40	19	M8	19	M8
30A(C)22.5X002HF	22.5	31.7	63.5	250	3000	57.6	119.7					
30A(C)25X002HF	25	35.3	70.5	250	3000	58.3	121.1					
30A(C)28X002HF	28	39.5	79	250	3000	60.2	124.7					
30A(C)32X002HF	32	45.1	90.2	250	3000	66.5	137.3					
30A(C)36X002HF	36	51.3	95.8	250	2800	68	140.5					
30A(C)42X002HF	42	59.9	99.8	230	2500	70.8	146.1					
30A(C)46X002HF	46	65.6	100.5	230	2300	72.7	149.8					
30A(C)50X002HF	50	71.3	99.8	200	2100	74.5	153.4					
30A(C)55X002HF	55	78.4	91.4	200	1750	76.7	157.9					
30A(C)60X002HF	60	85.5	99.8	180	1750	78.7	162.4					