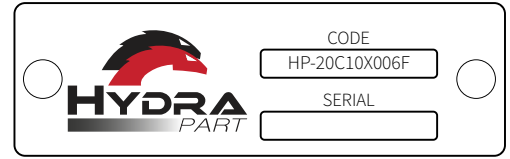


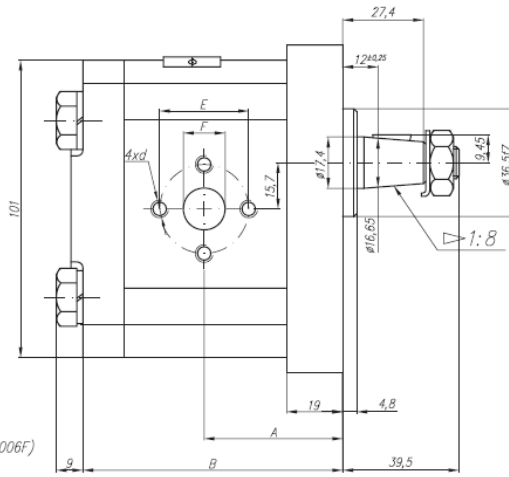
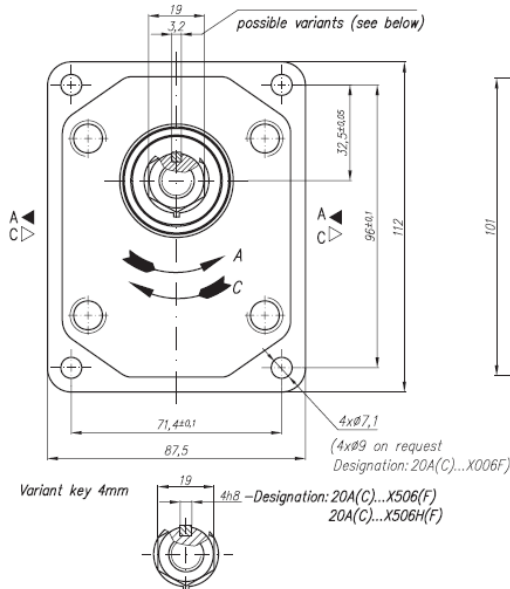


# Aluminium Group 2 Gear Pump Range

Hydra Part aluminium gear pumps are a standard three piece design, incorporating a full cast iron face plate and rear cover and an aluminium body. Available in a wide range of displacements, flanges, shafts and port arrangements. Also available in single, double or triple pump configurations. Hydra Part pumps are used for a variety of applications



- HYDRA PART  
**X**
- GROUP REF.  
**X**
- ROTATION  
**X**
- DISPLACEMENT  
**X**
- DRIVE SHAFT  
**X**
- PRESSURE (120-250 bar)  
**X**
- FLANGE MOUNTING Ø7.1MM  
**X**



TYPE	Displacement cm <sup>3</sup> /rev	FLOW		Preassure P <sub>nom</sub> BAR	Max Speed n rpm	Dimensions							
		at 1500rpm l/min	at max rpm l/min			A	B	Inlet			Outlet		
		E	F	d	E	F	d						
20A(C)4.5X006	4.5	6.14	14.33	250	3500	42.5	80	39.7	19	M6-6H	30.2	13.1	M6-6H
20A(C)6.3X006	6.3	8.69	20.29	250	3500	42.5	80						
20A(C)8.2X006	8.2	11.32	26.4	250	3500	42.5	80						
20A(C)10X006	10	13.95	32.55	250	3500	47	89	39.7	19	M8-6H	30.2	14.2	M6-6H
20A(C)11X006	11	15.76	36.78	250	3500	48	91.1						
20A(C)12X006	12	16.92	39.48	250	3500	48.6	92.3						
20A(C)14X006	14	19.95	46.55	250	3500	50	95.4	39.7	19	M8-6H	30.2	14.2	M6-6H
20A(C)15X006	15	21.6	36	250	2500	51	96.9						
20A(C)16X006	16	23.04	38.4	250	2500	52	98.6						
20A(C)19X006	19	27.37	45.6	200	2500	54	103.5	39.7	19	M8-6H	30.2	14.2	M6-6H
20A(C)22X006	22	31.68	42.24	180	2000	57	108.5						
20A(C)25X006	25	36	48	160	2000	59.2	113.4						
20A(C)14X006H	14	20.16	47.04	250	3500	55.3	105.7	39.7	19	M8-6H	30.2	14.2	M6-6H
20A(C)15X006H	15	21.6	43.2	250	3000	56	107.2						
20A(C)16X006H	16	23.04	46.08	250	300	56.9	108.8						
20A(C)17.3X006H	17.3	24.91	49.82	230	3000	58	110.9	39.7	19	M8-6H	30.2	14.2	M6-6H
20A(C)18.2X006H	18.2	26.21	52.42	210	3000	58.8	112.5						
20A(C)19X006H	19	27.36	54.72	200	3000	59.4	113.8						
20A(C)22X006H	22	31.68	52.8	180	2500	61.9	118.8	39.7	19	M8-6H	30.2	14.2	M6-6H
20A(C)25X006H	25	36	60	160	2500	64.3	123.7						
20A(C)28X006H	28	40.32	67.2	130	2500	66.8	128.5						
20A(C)32X006H	32	46.08	61.44	120	2000	70	134.8	39.7	19	M8-6H	30.2	14.2	M6-6H
20A(C)36X006H	36	51.84	69.12	100	2000	73.2	141.4						