

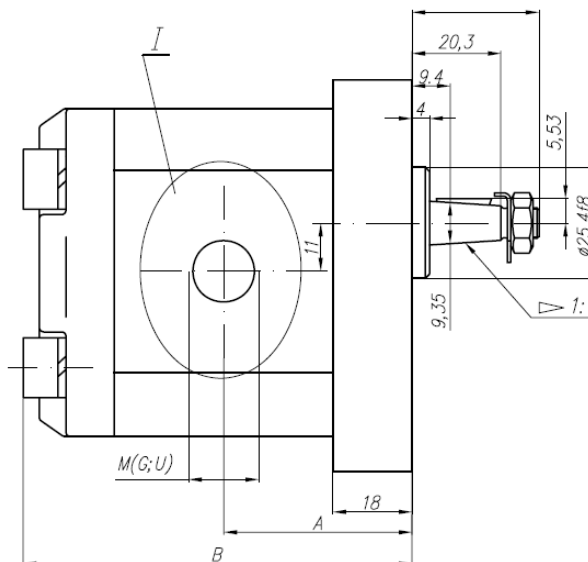
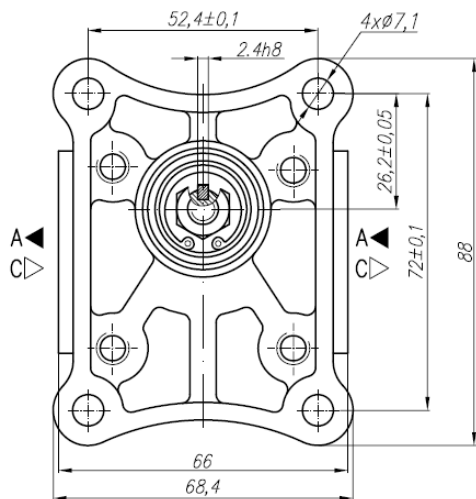


Aluminium Group 1 Gear Pump Range

Hydra Part aluminium gear pumps are a standard three piece design, incorporating a full aluminium face plate, rear cover and body. Available in a wide range of displacements, flanges, shafts and port arrangements. Also available in single, double or triple pump configurations. Hydra Part pumps are used for a variety of applications



HYDRA PART	GROUP REF.	ROTATION	DISPLACEMENT	DRIVE SHAFT	PRESSURE RANGE (120-250 bar)	FLANGE MOUNTING Ø7.1MM
X	X	X	X	X	X	X



Variants:

- ...X053M - for M ports (see the picture 1 and the table below);
- ...X053G - for G ports (see the picture 1 and the table below);
- ...X053U - for U ports (see the picture 1 and the table below).



TYPE	Displacement cm ³ /rev	FLOW		Pressure P _{nom} BAR	Max Speed n rpm	Dimension							
		at 1500rpm l/min	at max rpm l/min			Inlet			Outlet				
						M	G	U	M	G	U		
10A(C)1X053	1	1.4	3.26	250	3500	39.1	81	M16 X 1.5	G 3/8" - A	3/4" - 16UNF - 2B	M16 x 1.5	G 3/8" - A	9/16" UNF - 2B
10A(C)1.25X053	1.25	1.74	4.07	250	3500	39.5	82						
10A(C)1.6X053	1.6	2.23	5.21	250	3500	40.3	83.6						
10A(C)2X053	2	2.82	6.58	250	3500	41.1	85.2						
10A(C)2.5X053	2.5	3.53	8.23	250	3500	42.1	87.2						
*10A(C)2.65X053	2.65	3.74	8.72	250	3500	42.4	87.8						
10A(C)3.15X053	3.15	4.44	10.36	250	3500	43.5	89.8						
10A(C)3.65X053	3.65	5.15	12.01	250	3500	44.4	91.9						
10A(C)4.2X053	4.2	5.92	13.82	250	3500	45.5	94.1						
*10A(C)4.7X053	4.7	6.63	15.46	250	3500	46.1	96						
10A(C)5X053	5	7.05	14.1	250	3000	47.1	97.2	M20 X 1.5	G 1/2" - A	7/8" - 14 UNF	M18 x 1.5	3/4" - 16UNF	
10A(C)5.7X053	5.7	8.12	16.25	200	3000	48.5	100.1						
10A(C)6.1X053	6.1	8.69	14.49	200	2500	49.4	101.8						
10A(C)7.4X053	7.4	10.55	17.58	180	2500	52.1	107.2						
*10A(C)8X053	8	11.4	15.2	150	2000	53.4	109.7						
10A(C)8.5X053	8.5	12.11	16.15	150	2000	54.4	111.7	M20 X 1.5	G 1/2" - A	7/8" - 14 UNF	M18 x 1.5	3/4" - 16UNF	
10A(C)9.8X053	9.8	13.97	18.62	120	2000	57	117						