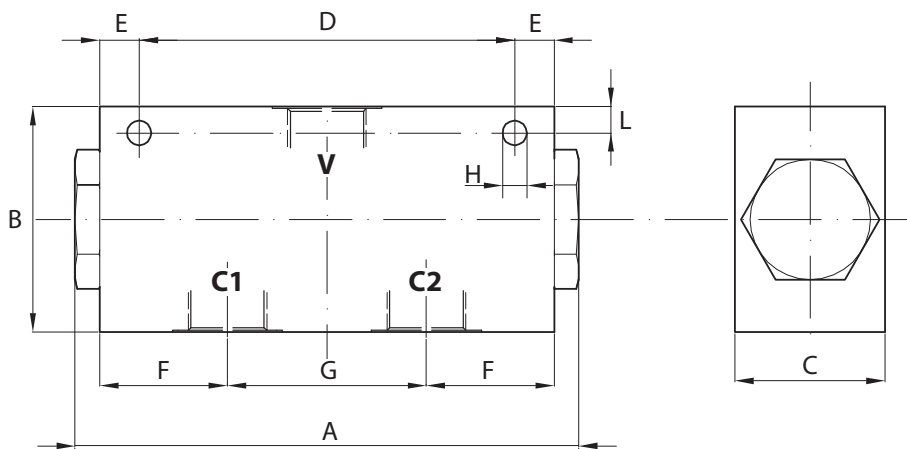
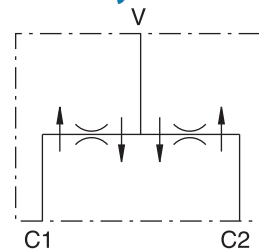


Dimensions

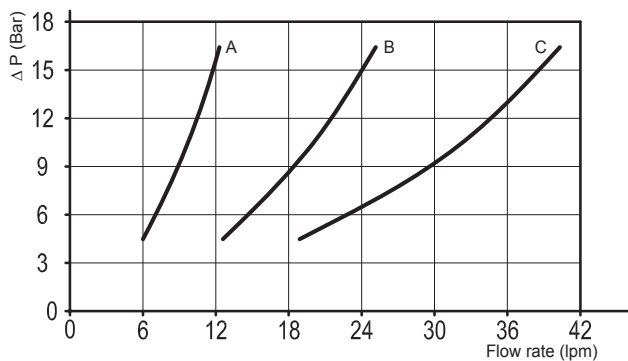


Size	C1 - C2 BSP	V BSP	A	B	C	D	E	F	G	H	L	Weight kg
01	3/8	3/8	135	60	40	100	10,5	34	53	6,5	7	0,87
02	1/2	3/8	135	60	40	100	10,5	34	53	6,5	7	0,83

Hydraulic Symbol



Curves



Features

Max Flow Rate (lpm)	38
Max Pressure (bar)	210
Slippage (top portion flow curve)	± 3%
Flow Division Ratio	50% - 50%

Materials: Aluminium manifold, hardened steel inner parts.

Ordering Code

FDC -- -

	Port Size BSP	
10	3/8	3/8
20	1/2	3/8

	Inlet Capacity (lpm)
A	6,5 - 12
B	13 - 23
C	24 - 38

Ordering Code Example: FDC03B - 1/2 - 3/8 BSP Ported Manifold, 13/23 lpm Inlet Range Capacity.