

DOC 302P - 302PS

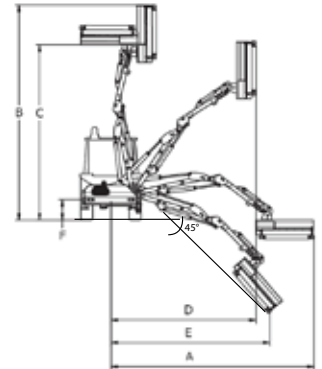
For tractors 80-110 hp

REAR HEDGE MOWERS



DOC 302P

DOC 302PS



DOC 302	P	PS
A (mm)	5.500	6.000
B (mm)	5.700	6.200
C (mm)	4.600	4.700
D (mm)	4.500	5.000
E (mm)	3.700	4.200
F (mm)	550	550

Hydraulic hedge mower with side shift and 90° rotating column with shock resistant hydraulic safety device for tractors HP 80/110 and weight 3500/4500 kg, suitable for working on local and trunk roads and farms.

ARM MOWER

TRACTOR

Model	Extension E (mm)	Weight (kg)	Oil tank (L)	Head (model)	Pump (l/min)	Hydraulic Motor (HP [kW])	Power (HP [kW])	3-point linkage	Weight (kg)	Width (m)	PTO (rpm)
DOC 302 P	5.500	1.250	160	30.4 TTD 130	100+20	55 (40)	80 / 110 (60 / 82)	Cat. 2	3.500	2,4	540
DOC 302 PS	6.000	1.300	160	30.4 TTD 130	100+20	55 (40)	80 / 110 (60 / 82)	Cat. 2	4.000	2,4	540



P



S

P: Mechanism that allows to work flush to the wheel with long extension machines, with a very-good speed and handling quickness.

S: With telescopic arm/s.

TECHNICAL FEATURES AND STANDARD EQUIPMENT

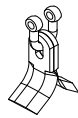
- Frame - 1st arm - 2nd arm in structural steel ST 52
- 90° rotating column and shock resistant hydraulic safety device
- Three points attachment 2nd category
- Oil tank 160 l
- Double gear pump group 3+2 - 100+20 l/min
- Bidirectional hydraulic motor HP 55 power
- Distributor with remote controls with mm 3000 flexible cables
- Self-levelling floating system
- Feeler roller recordable on 3 positions
- Head rotating angle 200° with upper attachment
- Helicoidal rotor with jointed cut blade KC4
- Number revs to rotor 3000 rpm
- Fixing tie-rods - Cardan joint
- Air-oil heat exchanger with radiating mass at high thermal exchange
- Rear underrun protection with lights
- Flail head mm 1300 MODEL 30.4 TTD 130 with direct transmission



KC4

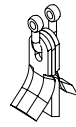
Ø max 2 cm

standard equipment



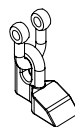
KC5

Ø max 2 cm



HC2

Ø max 4 cm



HF4

Ø max 6 cm



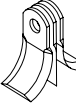
KF4

Ø max 4 cm



KF5

Ø max 4 cm



KF6

Ø max 3 cm



HF5

Ø max 6 cm



ACCESSORIES ON REQUEST

Flail head 30.3 (DOC 302)

Nitrogen accumulator for 1st arm suspension

Flail head mm 1050

Flail head, type heavy, Mod. 30.5

On-off electro-hydraulic distributor with joystick

Belt transmission "TTC", type heavy, Mod. 30.5

Power-assisted with joystick

Tie rods adapter Cat. 1 o 2

TERMINAL TOOLS - IN REPLACEMENT OF THE STANDARD MULCHER

HEDGE CUTTING BAR	BRANCH CUTTING BAR	FOREST DISCS CUTTING BAR	DISC BRANCH CUTTER	DITCH CLEANER
BF15	BTZ5 15	BD2	DFG12	PF60
	BTZ5 18	BD3		
	BTZ10 16			
	BTZ10 19			
	BTZ10 22			



pag. 26



pag. 27



pag. 28



pag. 29



pag. 30