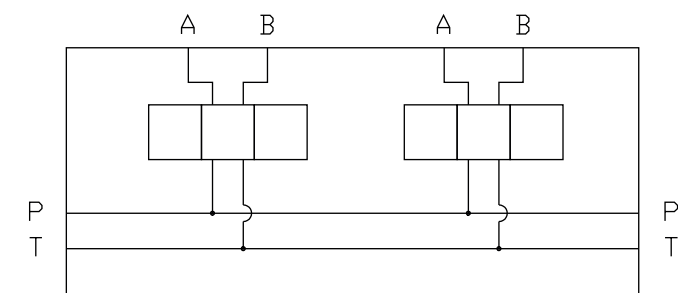
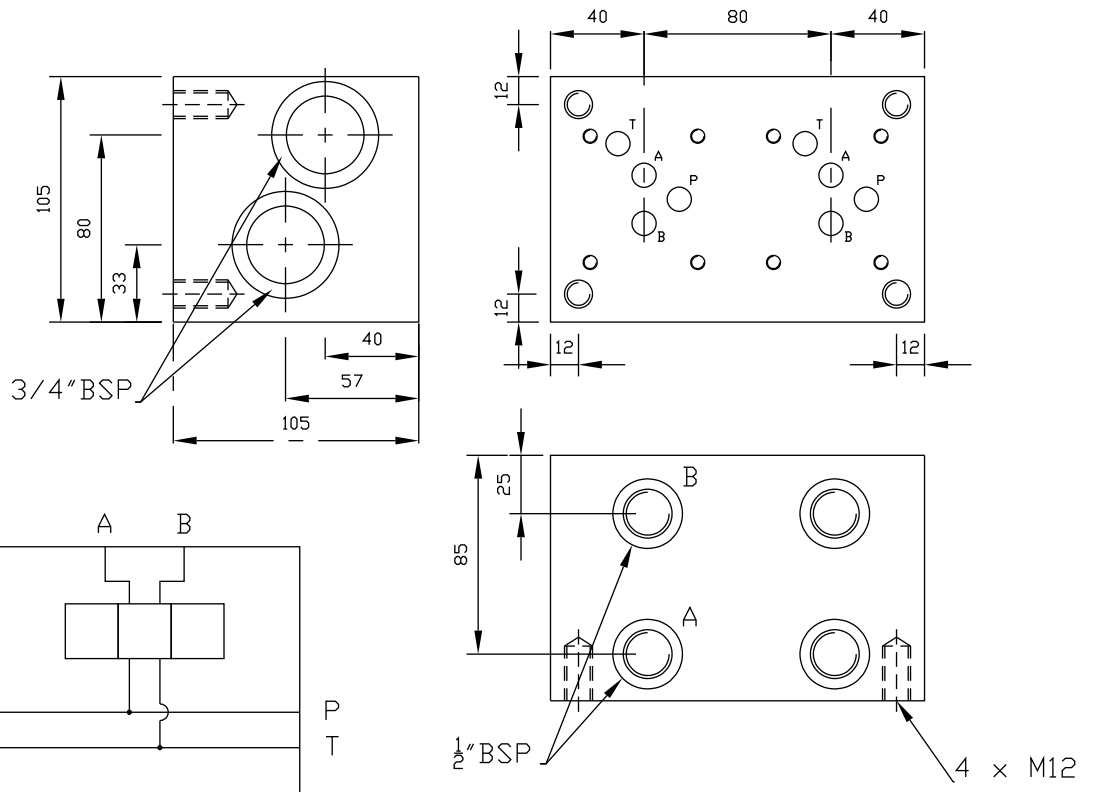


Features:

- Cast Iron Construction – Phosphated
- 345 Bar Maximum Working Pressure
- 70 L/Min Maximum Flow Rate
- P and T Ports – 3/4" BSP
- A and B Ports – 1/2" BSP

Benefits:

- Reduced Fitting and Installation Costs
- Compact design of valve circuits
- Reduces leak Paths
- Allows for easy modification to valve assembly stacks



Part Number	No. Stations
CM5-1G	1
CM5-2G	2
CM5-3G	3
CM5-4G	4
CM5-5G	5
CM5-6G	6