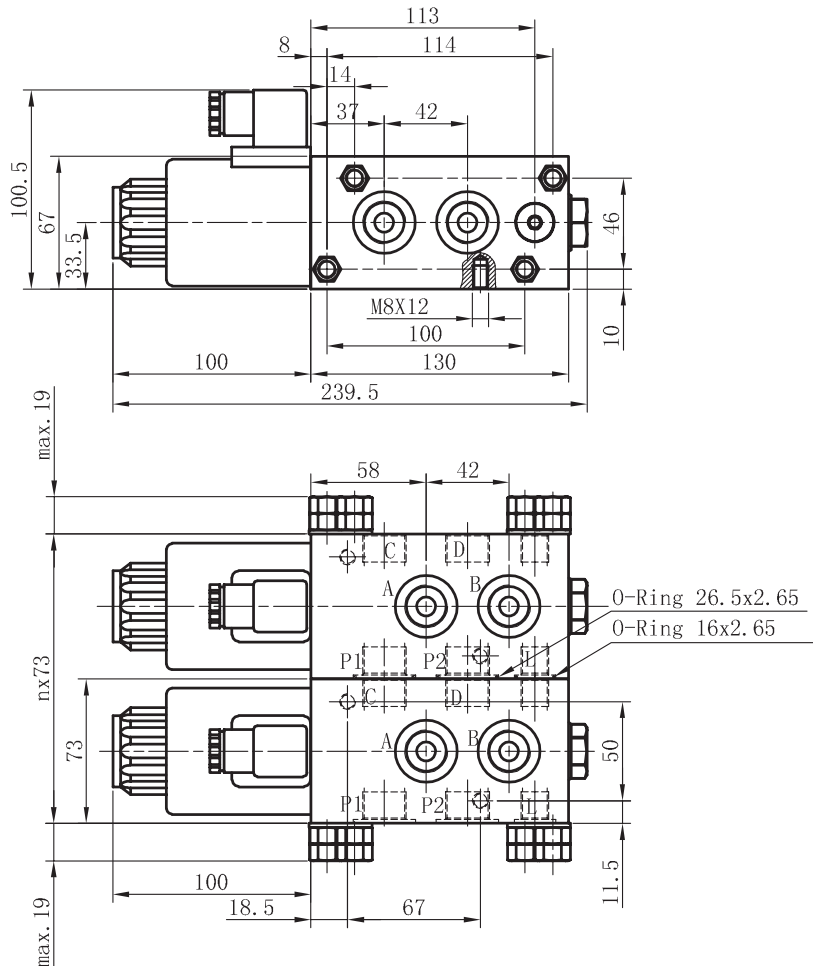
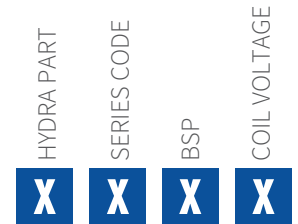
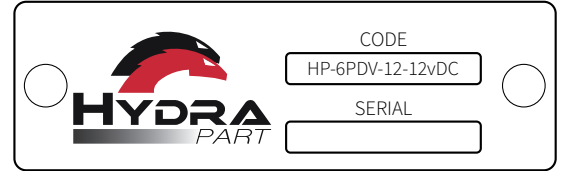
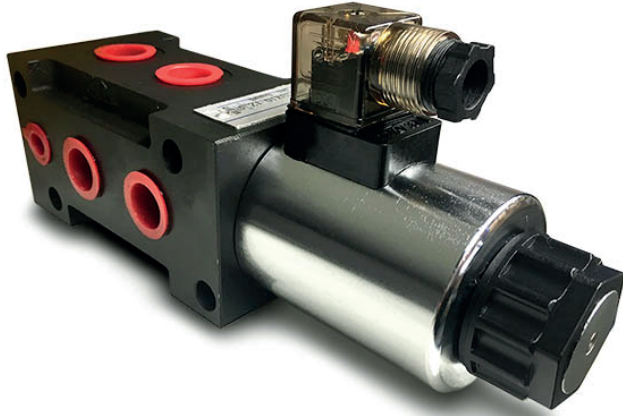




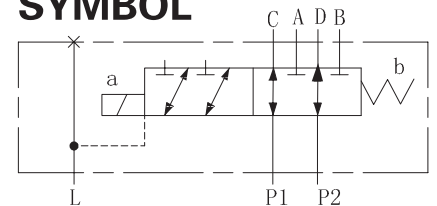
6 Port Solenoid Diverter Valve

1/2" Open Centre 80LPM 12/24vDC

Hydra Part diverter valves. Solenoid operation negates the need for external drainage and manage high power with minimal pressure drop.



SYMBOL



Technical data

Model	6PDV (SVK10/SVV90)
Max Flow rate (L/min)	80
Max operating pressure (MPa)	25
Valve body (Material) Surface treatment	(casting) phosphating surface
Oil cleanliness	NAS1638 class 9 and ISO4406 class 20/18/15