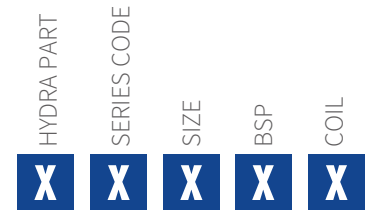
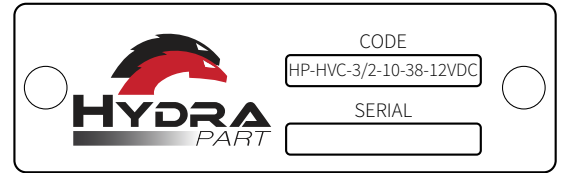




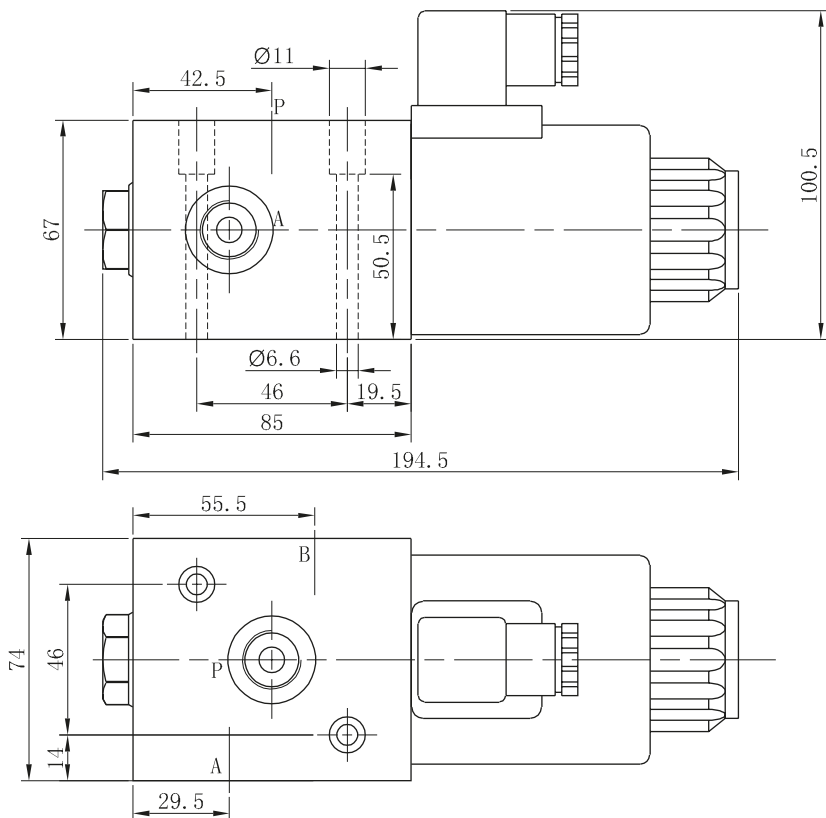
3 Port Solenoid Diverter Valve

3/8" - 1/2" 80l/min - 12/24vDC

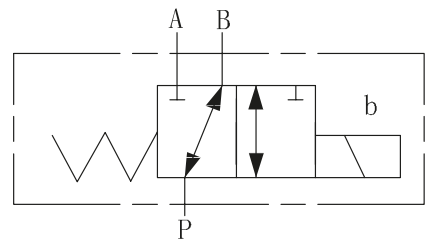
Hydra Part diverter valves. Solenoid operation negates the need for external drainage and manage high power with minimal pressure drop.



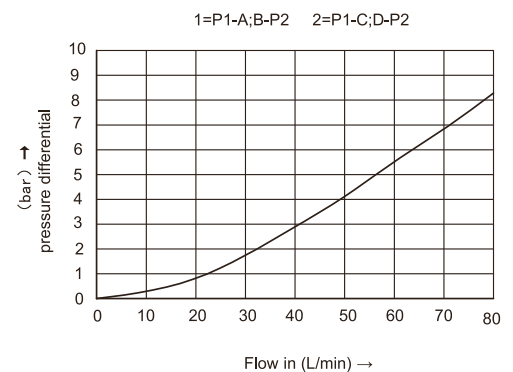
Installation Dimensions



SYMBOL



Characteristic curves



Technical data

Model	HVC-3/2-10
(L/min) Max Flow rate (L/min)	80
(Mpa) Max operating pressure (MPa)	21
Valve body (Material) Surface treatment	(casting) phosphating surface
Oil cleanliness	NAS1638 class 9 and ISO4406 class 20/18/15