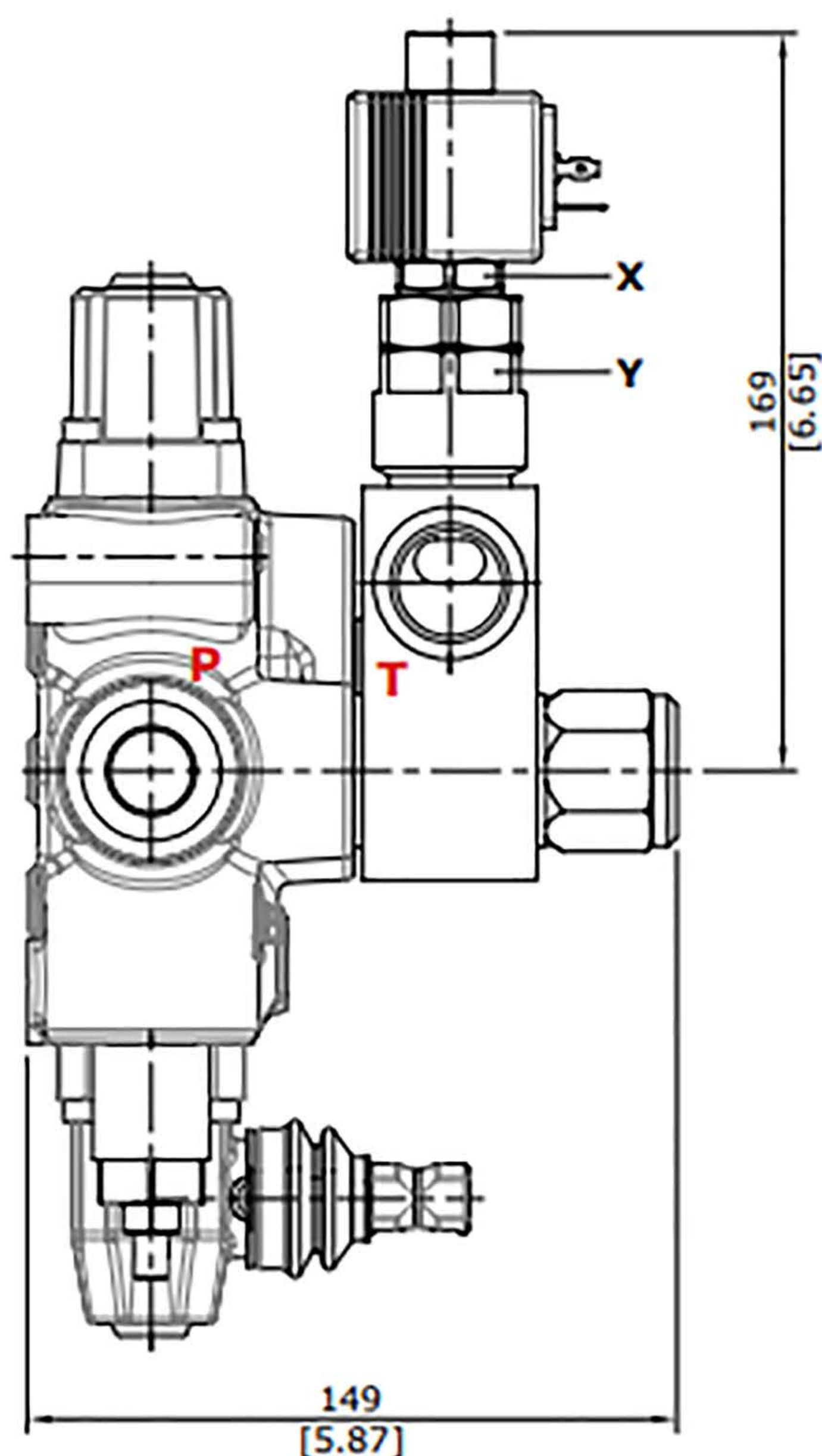


Solenoid operated

Emergency with push button and spring return; for detent position turn the button after press it.

WARNING: the manual override option is intended for emergency use, not for continuous duty operation.

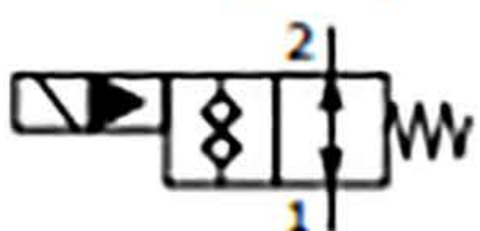


Wrenches and tightening torques

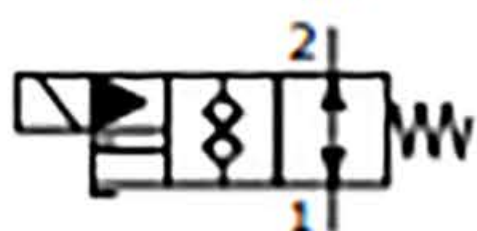
X = wrench 24 - 35 Nm (26 lbft)

Y = wrench 32 - 42 Nm (31 lbft)

ELN: without emergency



ELP: push button type



ELT: "push & twist" type

