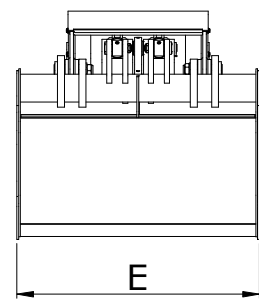
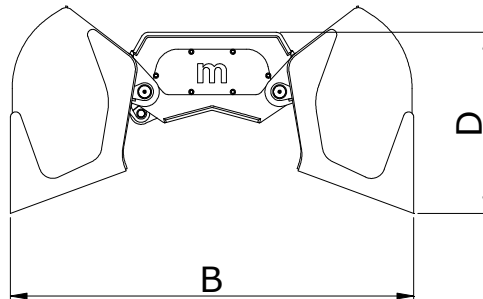
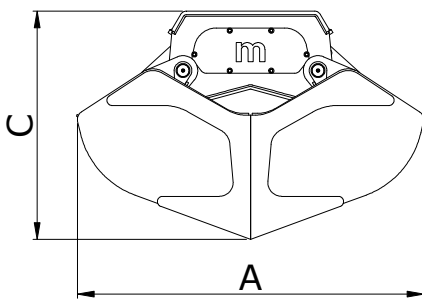
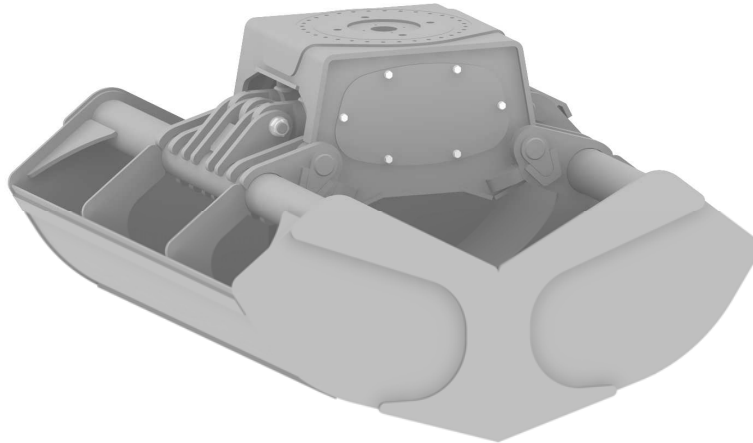




Hydraulic Equipment Industries

MBB - H



MODELLO MODEL MODÈLE MODELL	CAPACITA' CAPACITY CAPACITÉ INHALT		PRESSIONE PRESSURE PRESSION DRUCK	PESO WEIGHT POIDS GEWICHT	DENTI TEETH DIENTS ZÄHNE	CILINDRI CYLINDERS CYLINDRES ZYLINDER	FORZA FORCE FORCE KRAFT	DIMENSIONI (mm) SIZES (mm) DIMENSIONS (mm) ABMESSUNGEN (mm)					MACCHINA MACHINE MACHINE MASCHINE
	LT 	LT 	MAX- BAR	KG	n°	n°	t	A	B	C	D	E	MAX- TON
MBB 4 H	1000	1100	330	1400	5	2	9.2	2000	2300	1300	1040	1000	22-40
MBB 5 H	1400	1500	330	1600	7	2	9.2	2000	2300	1300	1040	1400	25-40
MBB 6 H	1800	2000	330	1850	7	2	9.2	2000	2300	1300	1040	1800	28-45
MBB 7 H	2200	2500	330	1950	7	2	8.0	2000	2640	1470	1090	1800	28-45
MBB 8 H	2600	3000	330	2100	7	2	8.0	2100	2640	1470	1090	2100	30-45
MBB 9 H	3000	3500	330	2300	9	2	8.0	2100	2640	1470	1090	2400	30-45



Call for advice on: 0844 770 7969 e-mail us: sales@approvedhydraulics.co.uk