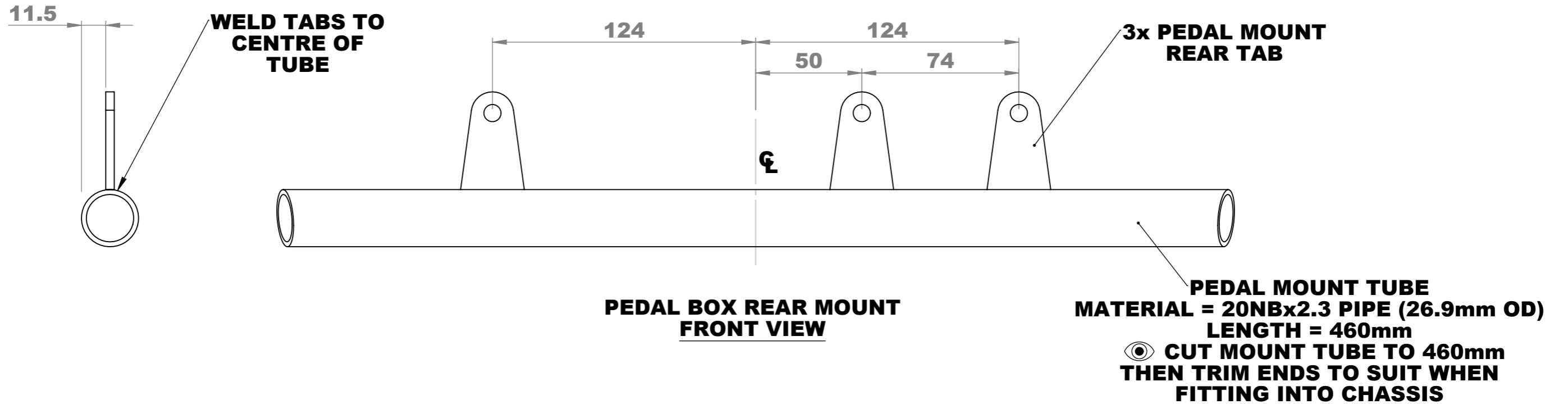
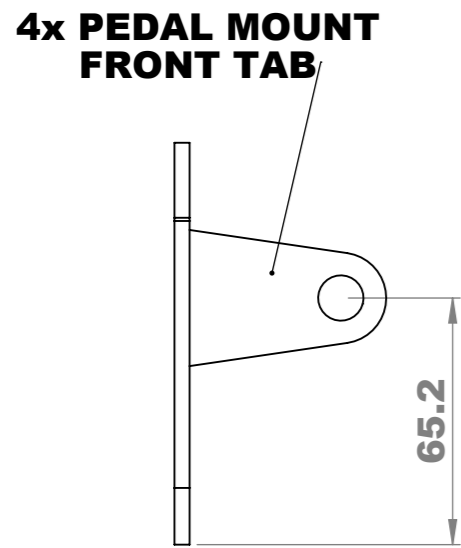


THE PLATES SHOWN ARE AVAILABLE AS LASER CUTTING FILES FROM THE EDGE PRODUCTS.  
SIMPLIFIED PLATES ARE SHOWN OVERLEAF.

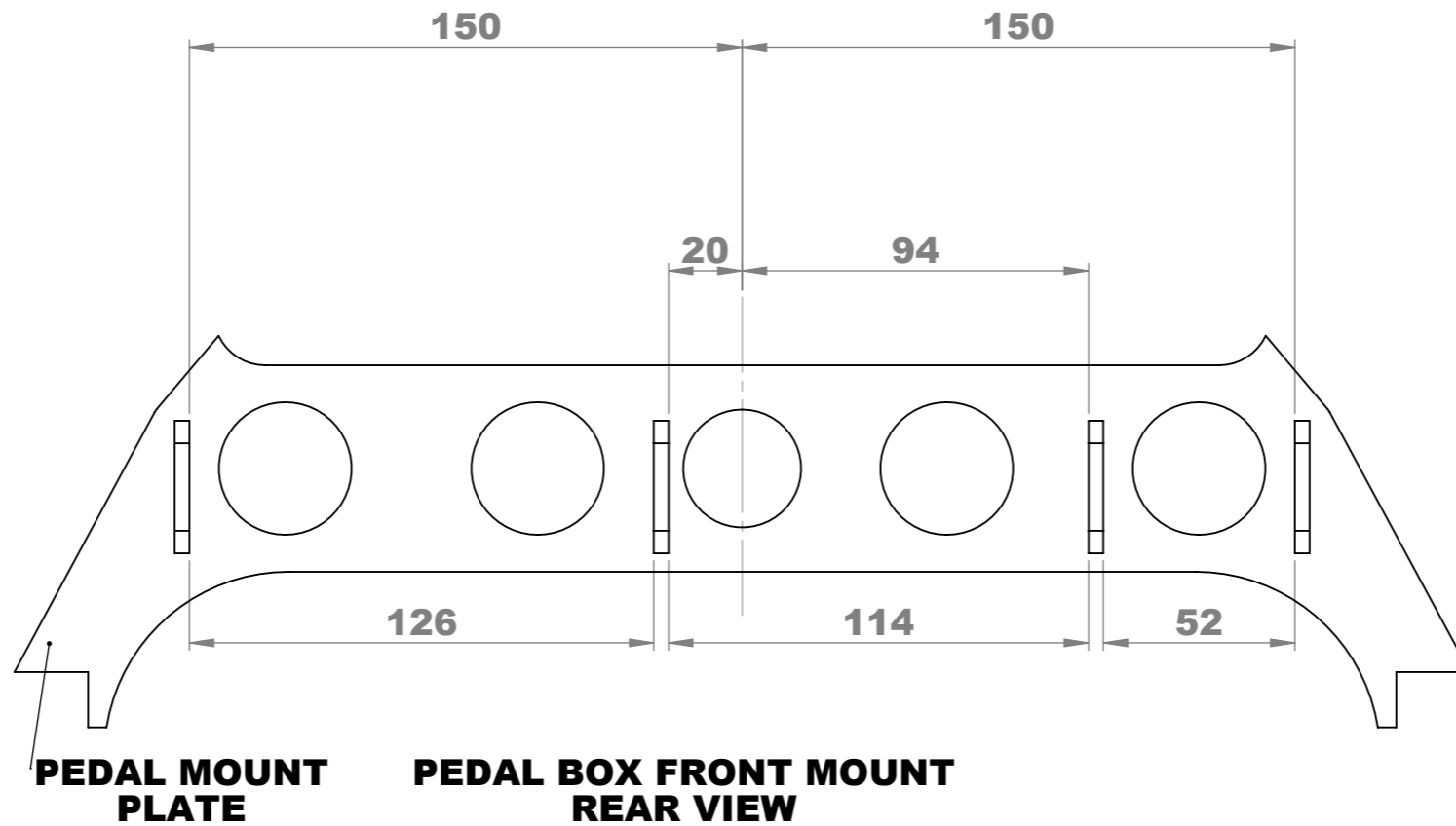


**PEDAL BOX REAR MOUNT FRONT VIEW**

**PEDAL MOUNT TUBE**  
MATERIAL = 20NBx2.3 PIPE (26.9mm OD)  
LENGTH = 460mm  
CUT MOUNT TUBE TO 460mm  
THEN TRIM ENDS TO SUIT WHEN  
FITTING INTO CHASSIS



**LEFT SIDE VIEW**



**PEDAL MOUNT PLATE**

**PEDAL BOX FRONT MOUNT REAR VIEW**

**CUT SCRAP TUBE SPACERS TO**  
126mm  
114mm  
52mm  
**BOLT BETWEEN PEDAL MOUNT FRONT TABS TO ENSURE CORRECT SPACING DURING WELDING.**  
**(OUTER TABS ARE SYMMETRIC)**



**THE EDGE PRODUCTS**  
PO BOX 292, KARRINYUP  
WESTERN AUSTRALIA, 6018  
SEE US IN COLOUR ON THE NET [www.theedgeproducts.com](http://www.theedgeproducts.com)  
PH - (08) 9249 5886 (INT 618) [theedge@git.com.au](mailto:theedge@git.com.au)

THIS DESIGN REMAINS THE PROPERTY OF THE EDGE PRODUCTS & IS NOT TO BE REPRODUCED, STORED IN A RETRIEVAL SYSTEM, OR TRANSMITTED IN ANY FORM OR MEANS ELECTRONIC MECHANICAL PHOTOCOPYING, RECORDING OR OTHERWISE WITHOUT PRIOR WRITTEN PERMISSION FROM  
© THE EDGE PRODUCTS 2016

*Sanger*  
design

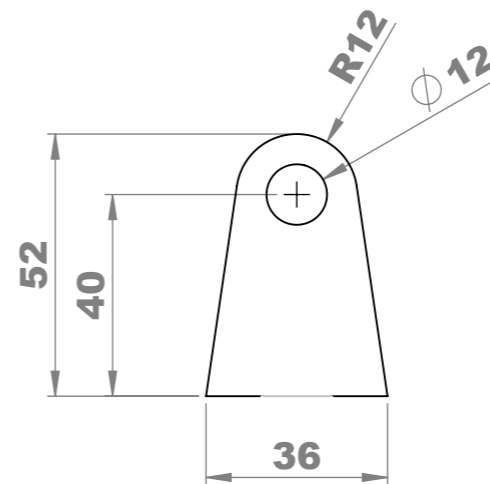
DRAWING TITLE **PEDAL MOUNTS**

DRAWING No.

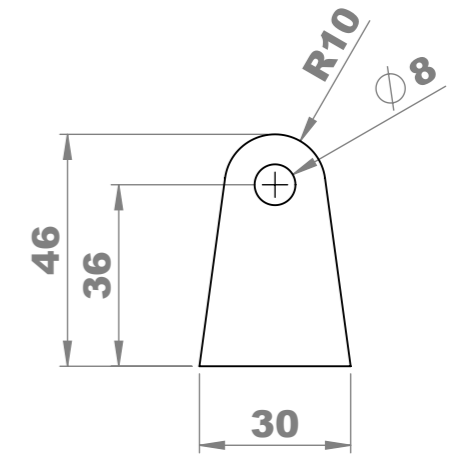
PAGE

**32**

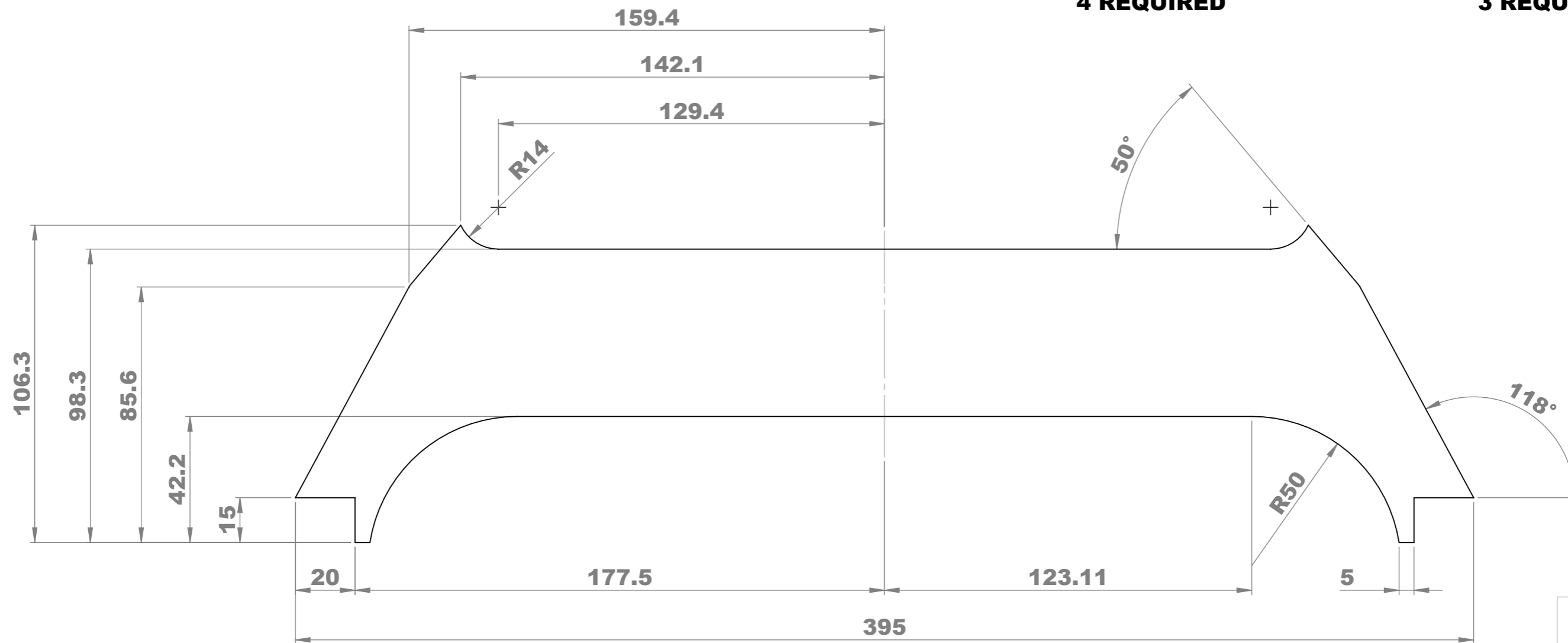
**ALL PLATES ARE 4mm MILD STEEL**



**PEDAL MOUNT FRONT TAB  
4 REQUIRED**



**PEDAL MOUNT REAR TAB  
3 REQUIRED**



**PEDAL MOUNT PLATE  
1 REQUIRED**



**PIRANHA  
III**



**THE EDGE PRODUCTS**  
**PO BOX 292, KARRINYUP**  
**WESTERN AUSTRALIA, 6018**  
 SEE US IN COLOUR ON THE NET [www.theedgeproducts.com](http://www.theedgeproducts.com)  
 PH - (08) 9249 5886 (INT 618) [theedge@git.com.au](mailto:theedge@git.com.au)

THIS DESIGN REMAINS THE PROPERTY OF THE EDGE PRODUCTS & IS NOT TO BE REPRODUCED, STORED IN A RETRIEVAL SYSTEM, OR TRANSMITTED IN ANY FORM OR MEANS ELECTRONIC MECHANICAL PHOTOCOPYING, RECORDING OR OTHERWISE WITHOUT PRIOR WRITTEN PERMISSION FROM © THE EDGE PRODUCTS 2016

*Sanger*  
design

DRAWING TITLE **PEDAL MOUNT PLATES**

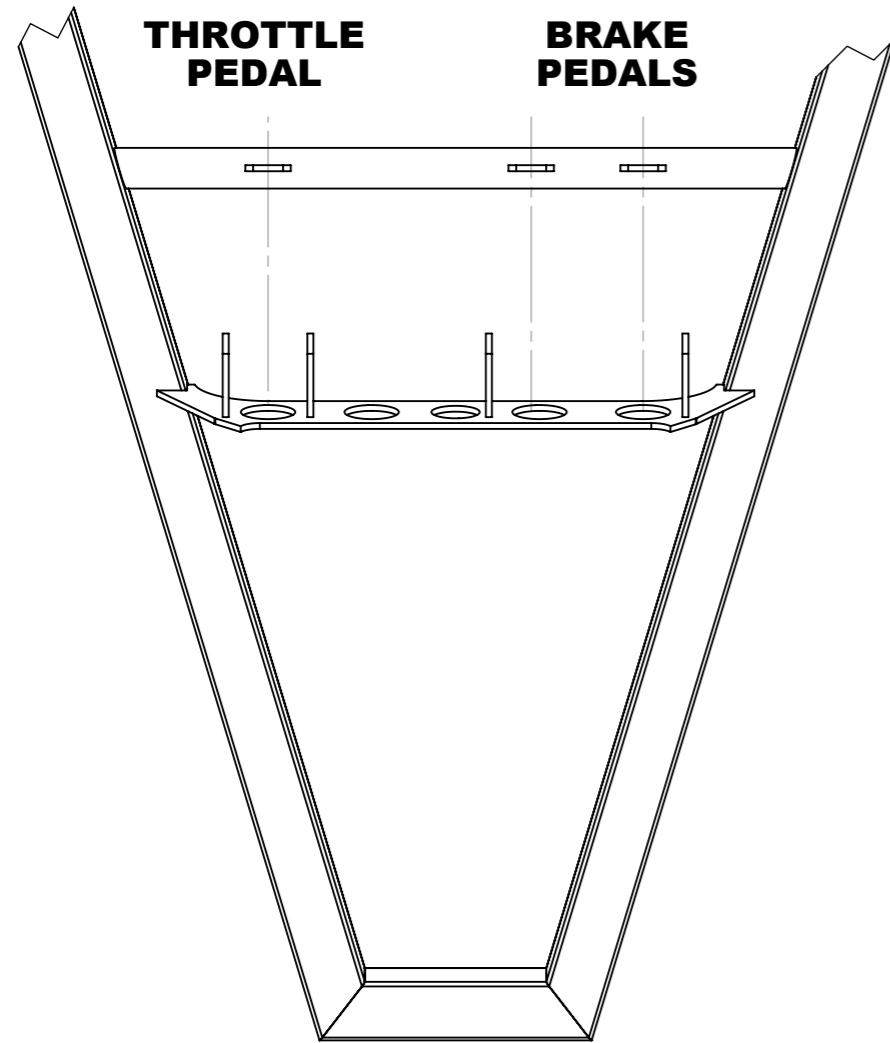
DRAWING No.

PAGE

**33**

RIGHT SIDE

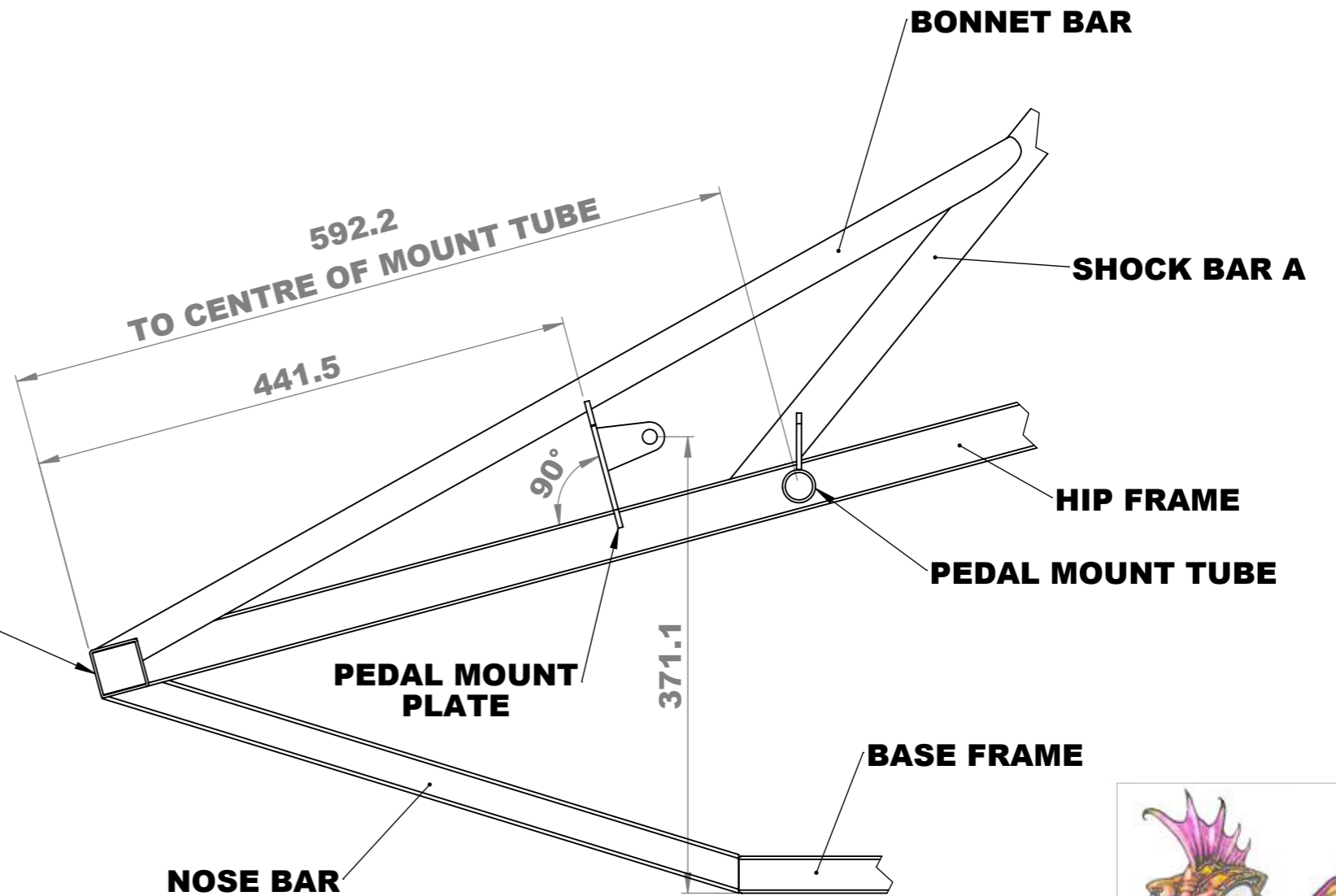
LEFT SIDE



TOP VIEW

**BEFORE FITTING THE MOUNTS TO THE CHASSIS BOLT THE MOUNTS TO THE PEDAL BOXES. THIS ENSURES THE MOUNTS ARE CORRECTLY ALIGNED IN THE CHASSIS.**

**AFTER TACK-WELDING THE MOUNTS INTO THE CHASSIS REMOVE ALL PEDALS, CYLINDERS etc FROM THE PEDAL BOXES BEFORE FINAL WELDING.**



LEFT SIDE VIEW

**PEDAL MOUNT PLATE IS PERPENDICULAR TO HIP FRAME.**

**PEDAL MOUNT TUBE TABS ARE PERPENDICULAR TO BASE FRAME.**

**WHEN VIEWED FROM THE SIDE THE PEDAL MOUNT TUBE LIES ON THE  $\phi$  OF THE HIP FRAME BAR.**



**THE EDGE PRODUCTS**  
PO BOX 292, KARRINYUP  
WESTERN AUSTRALIA, 6018  
SEE US IN COLOUR ON THE NET [www.theedgeproducts.com](http://www.theedgeproducts.com)  
PH - (08) 9249 5886 (INT 618) [theedge@git.com.au](mailto:theedge@git.com.au)

THIS DESIGN REMAINS THE PROPERTY OF THE EDGE PRODUCTS & IS NOT TO BE REPRODUCED, STORED IN A RETRIEVAL SYSTEM, OR TRANSMITTED IN ANY FORM OR MEANS ELECTRONIC MECHANICAL PHOTOCOPYING, RECORDING OR OTHERWISE WITHOUT PRIOR WRITTEN PERMISSION FROM  
© THE EDGE PRODUCTS 2016

*Sanger*  
design

DRAWING TITLE **PEDAL MOUNTS INSTALLATION**

DRAWING No.

PAGE

**34**

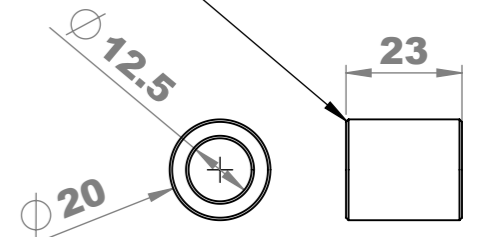


**THROTTLE  
PEDAL BOX**

**2x BRAKE  
PEDAL BOX**

**MASTER CYLINDERS  
(3/4" BORE)**

**CHAMFER ALL  
EDGES 0.5mm**



**BRAKE PEDALS  
MOUNT SPACER  
Ø 20mm MILD STEEL  
1 REQUIRED**

**M8x30 BOLTS (x5) ARE USED TO FASTEN THE  
MASTER CYLINDERS TO THE PEDAL BOXES AND  
THE PEDAL BOXES TO THE CHASSIS.**

**THE THROTTLE PEDAL PIVOTS ON AN  
M12x75 BOLT WHICH PASSES THROUGH  
THE CHASSIS MOUNTING TABS.**

**THE BRAKE PEDALS PIVOT ON A STUB AXLE PIVOT PIN  
(SEE FRONT SUSPENSION DRAWINGS) WHICH PASSES  
THROUGH THE CHASSIS MOUNTING TABS.**

**USE FLAT WASHERS AND NYLOC NUTS ON  
ALL MOUNTING BOLTS AND PIVOTS.**

**THROTTLE  
PEDAL**

**BRAKE PEDALS  
MOUNT SPACER**

**BRAKE  
PEDAL**

**THE PEDAL BOXES CAN BE USED  
TO JIG THE PEDAL MOUNTS WHEN  
BUILDING THE CHASSIS.  
REMOVE ALL BUSHES AND HYDRAULIC  
HARDWARE BEFORE WELDING.**



**THE EDGE PRODUCTS**  
PO BOX 292, KARRINYUP  
WESTERN AUSTRALIA, 6018  
SEE US IN COLOUR ON THE NET [www.theedgeproducts.com](http://www.theedgeproducts.com)  
PH - (08) 9249 5886 (INT 618) [theedge@git.com.au](mailto:theedge@git.com.au)

THIS DESIGN REMAINS THE PROPERTY OF THE EDGE PRODUCTS & IS NOT TO BE REPRODUCED, STORED IN A RETRIEVAL SYSTEM, OR TRANSMITTED IN ANY FORM OR MEANS ELECTRONIC MECHANICAL PHOTOCOPYING, RECORDING OR OTHERWISE WITHOUT PRIOR WRITTEN PERMISSION FROM © THE EDGE PRODUCTS 2016

*Sanger*  
design

DRAWING  
TITLE **PEDALS ASSEMBLY  
OVERVIEW**

DRAWING No.

PAGE

**52**

