

## Container and Modular Buildings Construction and Design Manual

From eccentric experiments all the way to projects that have already been realised, international design teams present their work between the twin poles of unconventional developments and life-saving shelters in this volume spanning more than 250 pages. Introduced with articles on design principles, and divided into three sections according to the form the structures take when delivered – cuboid, panels and custom units – the book covers everything from playful follies to architectural constructions for the homeless and outpatient medical stations which offer a response to social problems and space shortages. The text, photographs and plans put forward ideas as to how more can be done than the mere assembling of containers. Should we not first consider notions bordering on the absurd in order to come up with workable solutions for housing today?

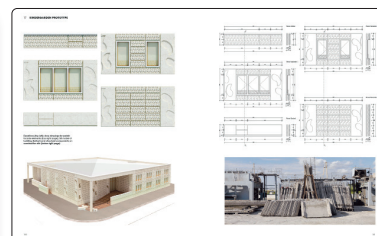
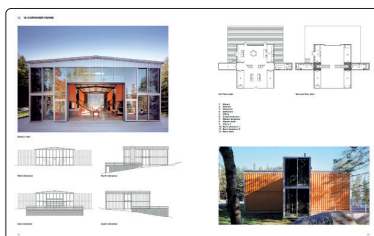
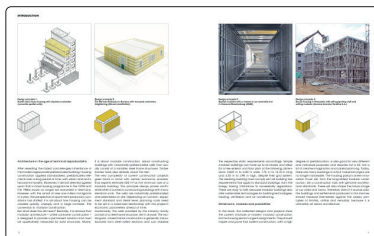
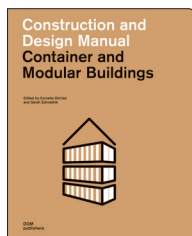
*Edited by Cornelia Dörries  
and Sarah Zahradnik  
With contributions by Jutta Albus  
and Philipp Meuser*

**Container and Modular Buildings**  
Construction and Design Manual

225 × 280 mm, 272 pages  
670 images  
Softcover  
ISBN 978-3-86922-301-8  
(third, updated edition)

EUR 48.00

*Cornelia Dörries*, born 1969. Author, studied Urban Sociology in Berlin and Manchester. She primarily writes about urban development, urban history, architecture and interior design. *Sarah Zahradnik*, born 1990. German-Australian architect. She graduated from the University of South Australia with a Master's in Architecture. She currently works in Melbourne. *Jutta Albus*, born 1976. PhD, architect, and Junior Professor of Resource Efficiency in Building Construction at the Technische Universität Dortmund. *Philipp Meuser*, born 1969. PhD, architect, and publisher based in Berlin with experience in international planning and construction projects. Consultant for pre-fabricated buildings.



Verlag / Publisher:

**DOM publishers**  
Caroline-von-Humboldt-Weg 20  
10117 Berlin, Germany  
T +49. 30. 20 69 69 30  
F +49. 30. 20 69 69 32  
E-Mail: [info@dom-publishers.com](mailto:info@dom-publishers.com)  
[www.dom-publishers.com](http://www.dom-publishers.com)

Pressekontakt / Public Relations:

**gisela graf communications**  
Schillerstraße 20  
79102 Freiburg, Germany  
T +49. 761. 791 99 09  
F +49. 761. 791 99 08  
E-Mail: [contact@gisela-graf.com](mailto:contact@gisela-graf.com)  
[www.gisela-graf.com](http://www.gisela-graf.com)