

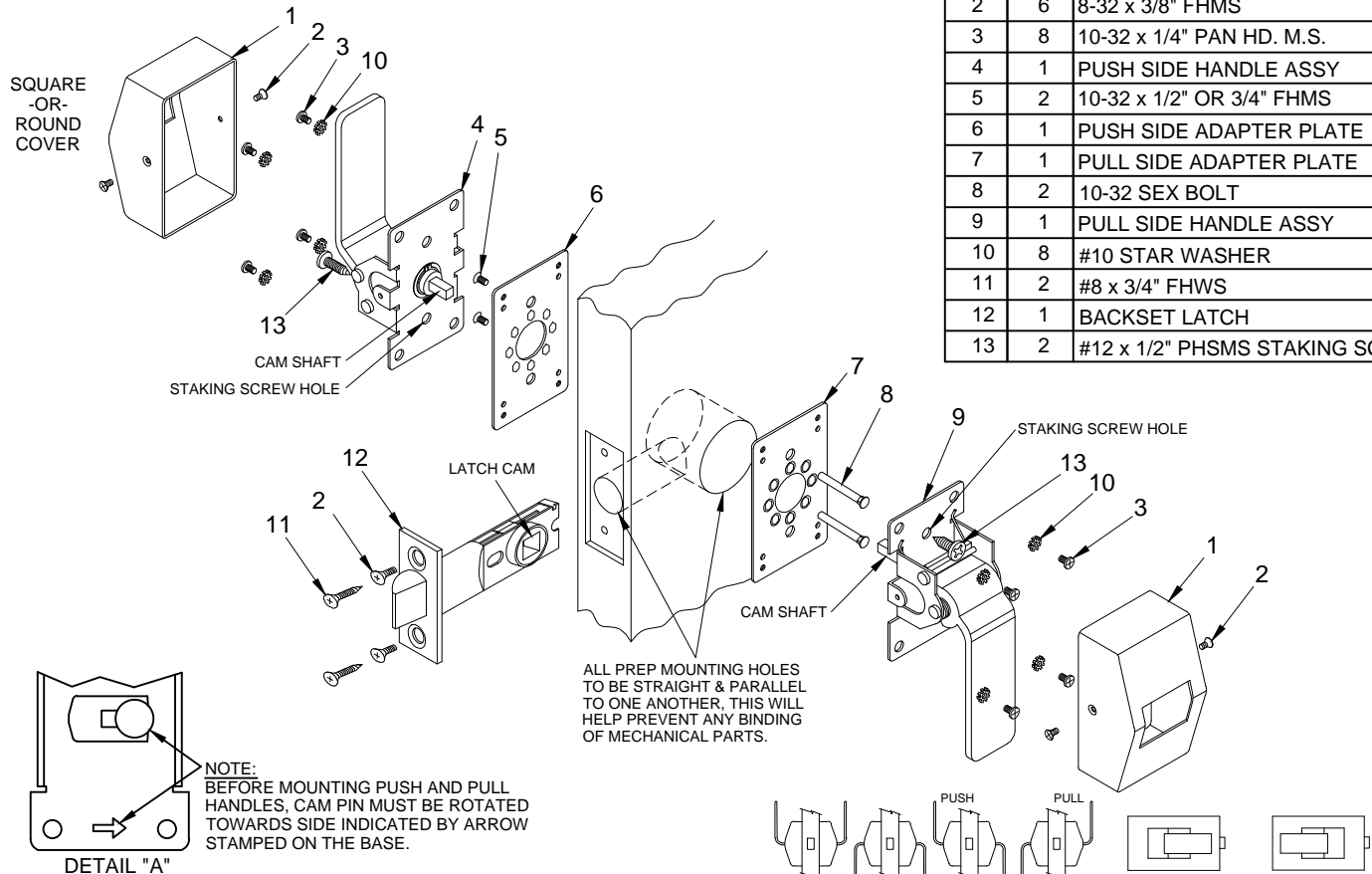
# 6100 SERIES INSTALLATION RETROFIT FOR 161 PREP C U S CLASSIFIED

(NO ADDITIONAL THRU BOLTS REQUIRED)

**NOTES**

1. TRIM CAN BE MOUNTED UP, DOWN, HORIZONTALLY OR VERTICALLY. \*\*
2. USES STANDARD 161 DOOR PREP.
3. VISION LITE MUST BE AT LEAST 6" FROM CENTERLINE OF TRIM.

ITEM	QTY	PART DESCRIPTION
1	2	COVER
2	6	8-32 x 3/8" FHMS
3	8	10-32 x 1/4" PAN HD. M.S.
4	1	PUSH SIDE HANDLE ASSY
5	2	10-32 x 1/2" OR 3/4" FHMS
6	1	PUSH SIDE ADAPTER PLATE
7	1	PULL SIDE ADAPTER PLATE
8	2	10-32 SEX BOLT
9	1	PULL SIDE HANDLE ASSY
10	8	#10 STAR WASHER
11	2	#8 x 3/4" FHWS
12	1	BACKSET LATCH
13	2	#12 x 1/2" PHSMS STAKING SCREWS



ALL PREP MOUNTING HOLES TO BE STRAIGHT & PARALLEL TO ONE ANOTHER. THIS WILL HELP PREVENT ANY BINDING OF MECHANICAL PARTS.

**INSTALLATION INSTRUCTIONS:**

1. Door to be machined for standard 161 prep.
2. Install latch (Item 12) using either #8 FHWS (Item 11) or 8-32 FHMS (Item 2) depending on door material type.
3. Take pull side handle assembly (Item 9) and rotate cam pin as shown in Detail "A" above. Place pull side handle assembly (Item 9) on pull side of door and slide the cam shaft through the latch cam on the latch.
4. On the push side of the door, assemble the push side adapter plate (Item 6) to the sex bolts on the pull side handle assembly using (2) 10-32 FHMS (Item 5). Test pull handle for free movement of the latch bolt before installing push side handle assembly. If latch bolt does not extend or retract freely because of any type of binding, loosen screws (Item 5) to align adjustment of base assemblies and retighten screws one at a time while checking for proper latch retraction.
5. Take push side handle assembly (Item 4) and rotate cam pin as shown in Detail "A" above. Assemble the push handle assembly (Item 4) onto the push side adapter plate (Item 6) using (4) #10 star washers (Item 10) and (4) 10-32 pan head MS (Item 3) and engage push cam onto the pull side cam shaft.
6. Test both handles for free movement of the latch bolt before tightening all screws. If latch bolt does not extend or retract freely because of any type of binding, loosen screws (Item 5) to align adjustment of base assemblies and retighten screws one at a time while checking for proper latch retraction.
7. To prevent the handle assemblies from possible twisting, which in turn can cause binding, determine which staking screw hole will be used for the push and the pull side handle assemblies (the staking screw installs on the staking screw hole location opposite the direction the handle is mounted). Install (1) staking screw on each side using #12 PHSMS (Item 13).
8. Install covers (Item 1) using 8-32 FHMS (Item 2).

PATENT No. 6,196,599 & 5,730,478



® www.abhmfg.com  
 E-mail: abhinfo@abhmfg.com  
 Architectural Builders Hardware Mfg., Inc.  
 1222 Ardmore Ave., Itasca, IL 60143  
 630.875.9900; FAX 800.9FAXABH (932.9224)

©2017 ABH Mfg., Inc.  
 printed in USA

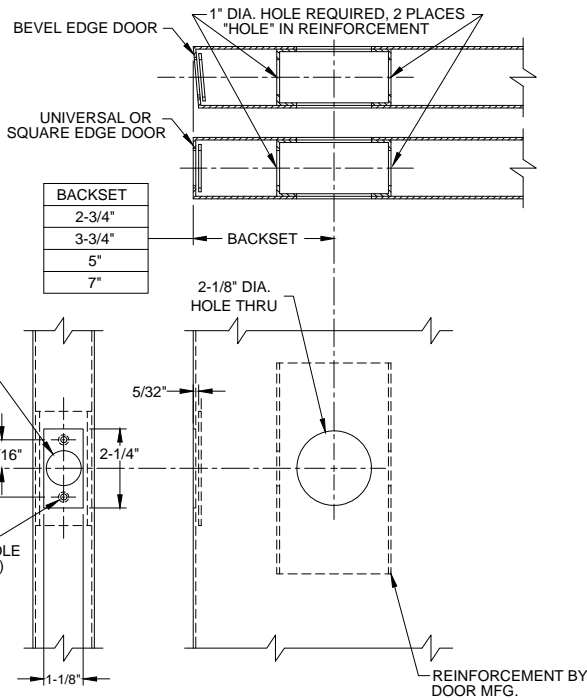
6100-1-10.DWG

**6100**

PAGE 1 OF 3

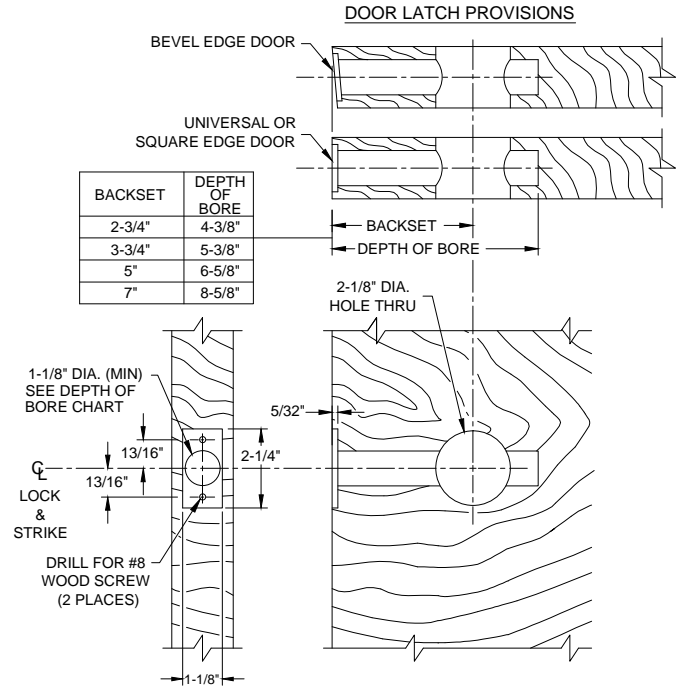
REVISED 05-19-17

# 6100 SERIES PUSH/PULL LATCH - DOOR PREP



## METAL DOOR

(VERTICAL OR HORIZONTAL MOUNTING SHOWN)

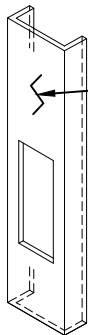


## WOOD DOOR

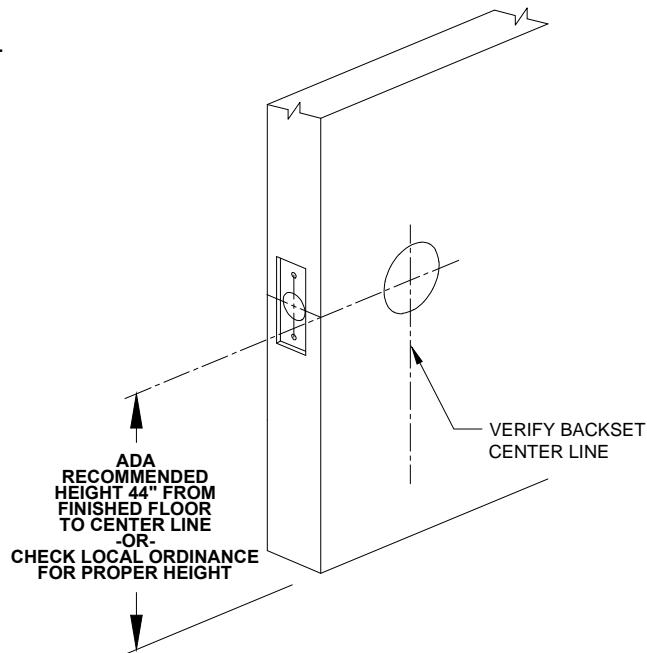
(VERTICAL OR HORIZONTAL MOUNTING SHOWN)

### DOOR PREP INFORMATION:

1. BACKSET DIMENSION FROM LOW EDGE OF BEVEL.
2. CENTER PUNCH ALL HOLES.
3. DRILL HOLES (FOR HOLLOW METAL DOORS, DO NOT DRILL THRU. CENTER PUNCH & DRILL HOLES FROM BOTH SIDES OF DOOR).
4. REINFORCEMENT MUST BE APPLIED ON METAL DOORS AT THE SCREW LOCATIONS.
5. REINFORCEMENT TO BE SUPPLIED BY DOOR MANUFACTURER. THE HANDLE ASSYS MUST BE SUPPORTED. THE LATCH BOLT UNIT MUST BE SUPPORTED AND CENTERED WITHIN 1/16" OF THE CENTERLINE AT THE BACK END.



**EDGE GUARD NOTE:**  
WHEN PREPPING THE DOOR FOR THE BACKSET, DETERMINE IF THE DOOR WILL RECEIVE AN EDGE GUARD. IF SO, THE EDGE GUARD SHOULD BE INSTALLED FIRST AND THEN THE PREP FOR THE LATCH BACKSET SHOULD BE MEASURED FROM THE OUTSIDE EDGE OF THE EDGE GUARD.



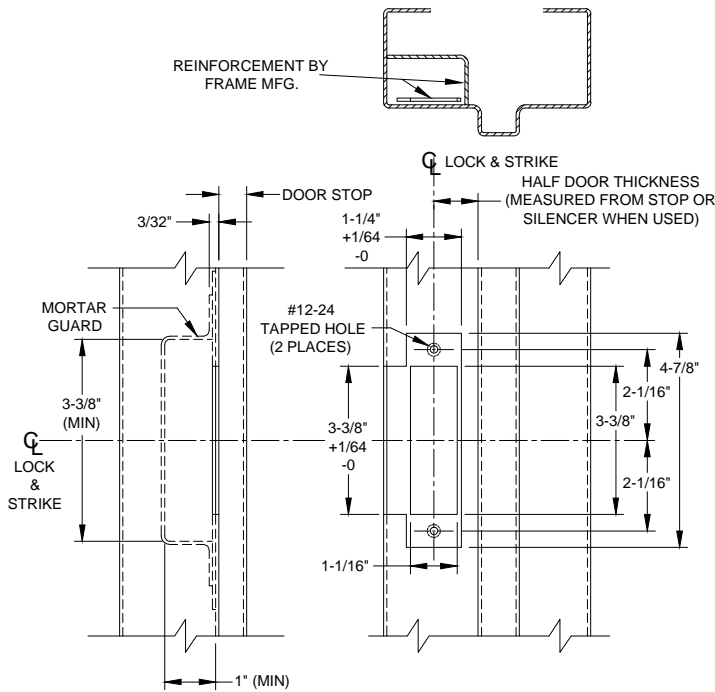
® www.abhmfg.com  
E-mail: abhinfo@abhmfg.com  
Architectural Builders Hardware Mfg., Inc.  
1222 Ardmore Ave., Itasca, IL 60143  
630.875.9900; FAX 800.9FAXABH (932.9224)

© 2017 ABH Mfg., Inc.  
printed in USA

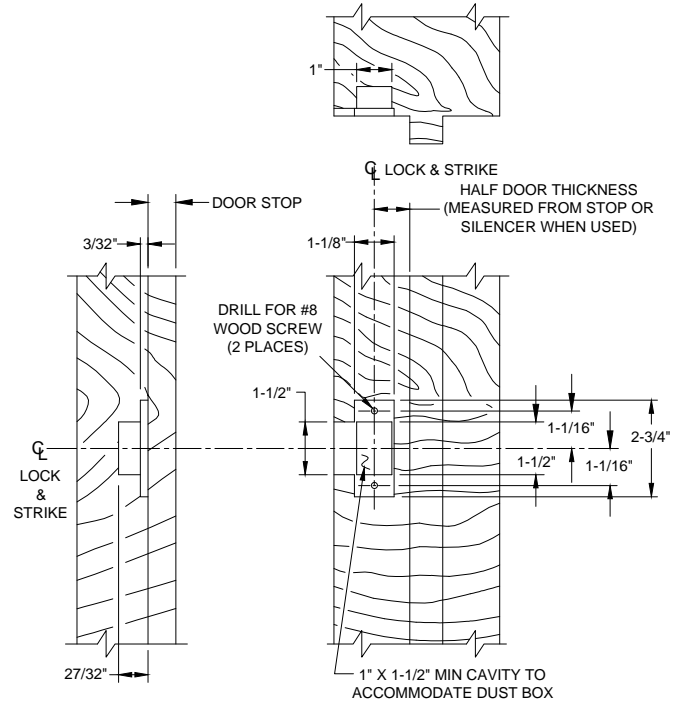
6100  
PAGE 2 OF 3  
REVISED 05-19-17

6100-2-10.DWG

# 6100 SERIES PUSH/PULL LATCH - FRAME PREP



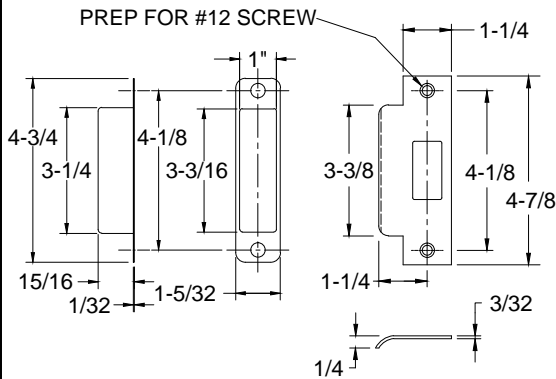
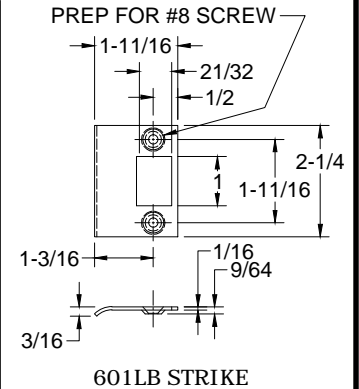
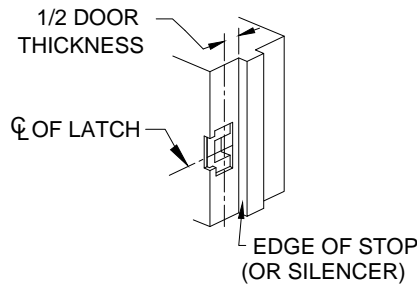
**METAL FRAME**  
(ASA STRIKE SHOWN FOR EXAMPLE)



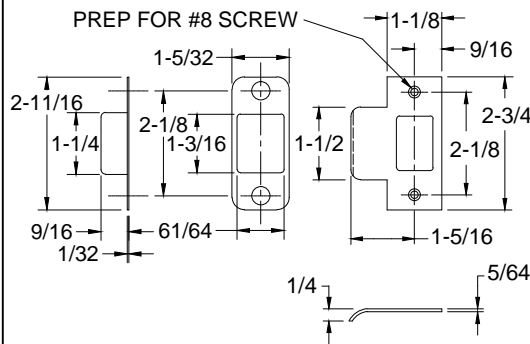
**WOOD FRAME**  
(\"T\" STRIKE SHOWN FOR EXAMPLE)

**FRAME PREP:**

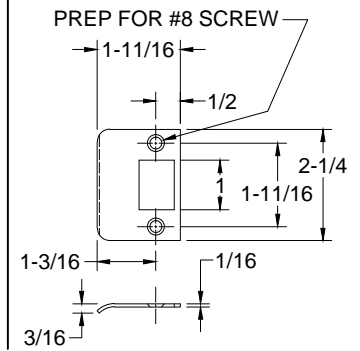
1. Mark centerline of latch bolt on frame.
2. Center strike and mark screw positions.
3. Mortise to required strike and box depth.
4. All dimensions in inches.



ASA STRIKE & DUST BOX



\"T\" STRIKE & DUST BOX



\"D\" STRIKE



® [www.abhmfg.com](http://www.abhmfg.com)  
 E-mail: [abhinfo@abhmfg.com](mailto:abhinfo@abhmfg.com)  
 Architectural Builders Hardware Mfg., Inc.  
 1222 Ardmore Ave., Itasca, IL 60143  
 630.875.9900; FAX 800.9FAXABH (932.9224)

© 2017 ABH Mfg., Inc.  
 printed in USA

6100-3-10.DWG

**6100**

PAGE 3 OF 3

REVISED 05-19-17