

A:3H[®]

Manufacturing, Inc.



- Hospital Push/Pull Latches
- Electro-Magnetic Door Holders
- Electrical Power Transfer Products
- Aluminum Continuous Geared Hinges
- Stainless Steel Continuous Pin & Barrel Hinges
- Stainless Steel Edge Guards
- Pivots & Pivot Sets
- Rescue Hardware
- Coordinators, Flush Bolts & Roller Latches
- Slide Bolts, Surface Bolts & Miscellaneous Products



Overhead Holders & Stops

Overhead Holders & Stops Cross Reference Chart

| Type | Function | ABH* | GJ* | ASSA Abloy* | | | Dorma* | ANSI Code |
|-------------------------------|-----------|--------|---------|------------------|----------------|-----------|--------|-----------|
| | | | | Rixson* | Sargent* | Rockwood* | | |
| Concealed Mount - Heavy Duty | Hold Open | 1010SL | 100H | - | - | - | - | C01511 |
| | Stop | 1020SL | 100S | 6-x36 | 1760S | - | - | C01541 |
| | Hold Open | 1010SA | 100HADJ | - | - | - | - | C01511 |
| | Stop | 1020SA | 100SADJ | 6ADJ-x36 | - | - | - | C01541 |
| | Hold Open | 1010 | - | 1-x26 | 690H 1710H | OH100H | 910H | C01511 |
| | Stop | 1020 | - | 1-x36 | 690S 1710S | OH100S | 910S | C01541 |
| | Friction | 1030 | - | 1-x16 | - | - | - | C01531 |
| | Hold Open | 1010A | - | 1ADJ-x26 | - | - | - | C01511 |
| | Stop | 1020A | - | 1ADJ-x36 | - | - | - | C01541 |
| | Friction | 1030A | - | 1ADJ-x16 | - | - | - | C01531 |
| Concealed Mount - Medium Duty | Hold Open | 4010 | 410H | 2-x26 5-x26 | 1530H 1720M | OH200M | 710H | C04511 |
| | Stop | 4020 | 410S | 2-x36 5-x36 | 1530S 1720M | OH200M | 710S | C04541 |
| | Friction | 4030 | 410F | 2-x16 | 1530F 1720M | OH200M | 710F | C04531 |
| Surface Mount - Medium Duty | Hold Open | 4410 | 450H | 10-x26 55-x26 | 1540H 1700M | OH1000M | 700H | C05511 |
| | Stop | 4420 | 450S | 10-x36 55-x36 | 1540S 1700M | OH1000M | 700S | C05541 |
| | Friction | 4430 | 450F | 10-x16 | 1540F 1700M | OH1000M | 700F | C05531 |
| Surface Mount - Heavy Duty | Hold Open | 7010 | 70H | - | - | - | - | C08511 |
| | Stop | 7020 | 70S | - | - | - | - | C08541 |
| | Hold Open | HD7010 | 79H | - | - | - | - | C08511 |
| | Stop | HD7020 | 79S | - | - | - | - | C08541 |
| | Hold Open | 8010 | 81H | 8-x26 | - | - | - | C03511 |
| | Stop | 8020 | 81S | 8-x36 | - | - | - | C03541 |
| | Hold Open | 9010 | 90H | 9-x26 | 590H 1790H | OH900H | 900H | C02511 |
| | Stop | 9020 | 90S | 9-x36 | 590S 1790S | OH900S | 900S | C02541 |
| | Friction | 9030 | 90F | 9-x16 | - | - | - | C02531 |
| | Hold Open | 9010A | - | 9ADJ-x26 | - | - | - | C02511 |
| | Stop | 9020A | - | 9ADJ-x36 | - | - | - | C02541 |
| | Friction | 9030A | - | - | - | - | - | C02531 |

*Brand names are trademarks or registered trademarks of their respective companies.

Table of Contents

General Info

| | |
|-------------------------|-----|
| Functions | B-2 |
| Standard Finishes | B-2 |

Installation Methods

| | |
|-----------------------|-----|
| Concealed Mount | B-3 |
| Surface Mount | B-3 |

| | |
|-------------|-----|
| Parts | B-4 |
|-------------|-----|

| | |
|---------------|-----|
| Options | B-5 |
|---------------|-----|

| | |
|-----------------------|-----|
| Special Layouts | B-6 |
|-----------------------|-----|

Concealed Mount

| | |
|---|------|
| 1000 Series - Heavy Duty | B-7 |
| 1000A Series - Heavy Duty, Adjustable | B-8 |
| 1000SL Series - Heavy Duty, Slim Line | B-9 |
| 1000SA Series - Heavy Duty, Slim Line, Adjustable | B-10 |
| 4000 Series - Medium Duty | B-11 |

Surface Mount

| | |
|---|------|
| 3300A Series - Medium Duty, Adjustable | B-12 |
| 3400 Series - Medium Duty, Side Jamb Mount | B-13 |
| 3500 Series - Heavy Duty, Parallel Arm Holder | B-14 |
| 4400 Series - Medium Duty | B-15 |
| 7000 Series - Heavy Duty, Bar Type | B-16 |
| HD7000 Series - Extra Heavy Duty, Bar Type | B-17 |
| 8000 Series - Heavy Duty, Jointed Arm | B-18 |
| 9000 Series - Heavy Duty | B-19 |
| 9000A Series - Heavy Duty, Adjustable | B-20 |



General Information

Overhead holders and stops are used to prevent unnecessary damage to the door, frame, wall and other door hardware by limiting the degree of door swing. They are installed at the top of a door opening; therefore, out of the general reach and not a tripping hazard. Whether for commercial or residential application, the use of overhead holders and stops extends the life of the opening and other hardware.

Functions

ABH offers three functions for most Overhead Stops and Holders.

- **Hold Open** – Door will stay held open at the selected degree of opening. Hold open adjustment screw controls the amount of force required to disengage the hold open mechanism.
- **Stop** – Door stops at selected degree of opening.
- **Friction** – Most commonly used on doors without closers. Door will virtually stay held open at the selected degree of opening. Friction tension adjustment screw controls the amount of resistance when opening and closing the door.

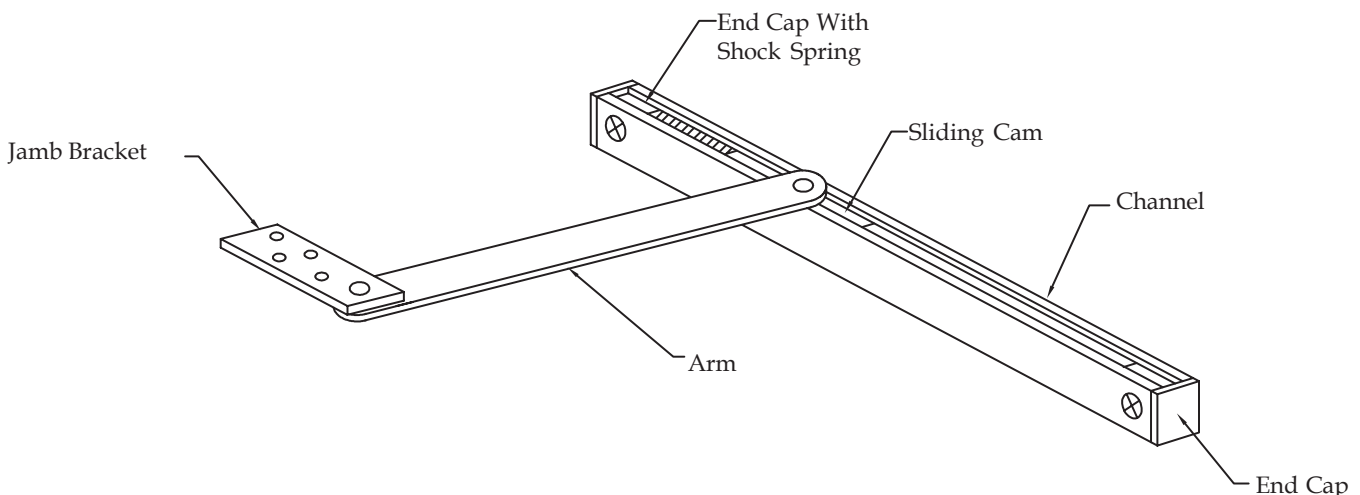
Standard Finishes*

US32D is the standard and most cost-effective finish for the vast majority of ABH Overhead Stops and Holders. With the exception of 3500, 7000 and HD7000 series, the base material used for our jamb brackets, arms and channels is **stainless steel**.

ABH can provide **custom finishes** not listed here upon request – please contact factory.

| ABH Finish | Description |
|------------|------------------------|
| US32D | Satin Stainless Steel |
| US10 | Satin Bronze |
| US10B | Dark Bronze |
| US4 | Satin Brass |
| US32 | Bright Stainless Steel |
| US3 | Bright Brass |
| US26D | Satin Chrome Plated |
| US26 | Bright Chrome Plated |
| S1 | Painted Aluminum |
| S2 | Painted Brass |
| S3 | Painted Satin Bronze |
| S4 | Painted Black |
| S5 | Painted Dark Bronze |
| S8 | Painted White |

*3500 Series is only available in painted finishes



Installation Methods - Concealed vs. Surface

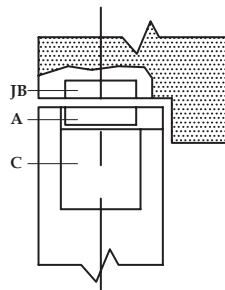
Concealed mount requires cut-outs in both the frame and door for installation. Surface mounted overhead holders mount on the face of the soffit and the face of the door, making it an easier installation for existing openings.

| | |
|------------|----------------------|
| A | = Arm |
| AJB | = Angle Jamb Bracket |
| C | = Channel |
| JB | = Jamb Bracket |

Concealed Mount Installation

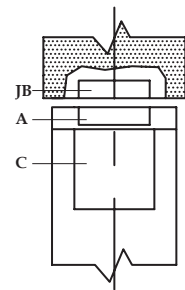
Example 1 - Single - Acting Doors

- Jamb bracket mortised into soffit (JB)
- Arm cut-out on stop side of door only (A)
- Channel mortised into top of door (C)



Example 2 - Double - Acting Doors

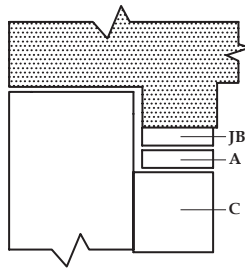
- Jamb bracket mortised into soffit (JB)
- Arm cut-outs on both sides of door (A)
- Channel mortised into top of door (C)



Surface Mount Installation

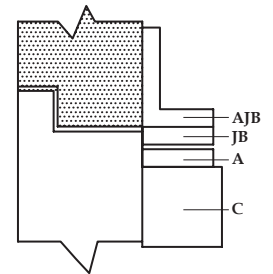
Example 3 - Standard (push side)

- Jamb bracket mounts on top of soffit (JB)
- Channel mounts to the face of the door (C)



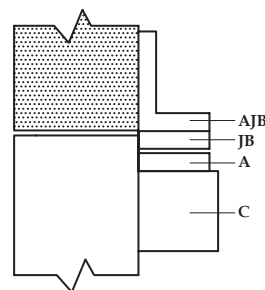
Example 4 - Rabbeted Door (push side)

- Angle jamb bracket mounts to the face of the header (AJB)
- Jamb bracket attaches to the angle jamb bracket (JB)
- Channel mounts to the face of the door (C)



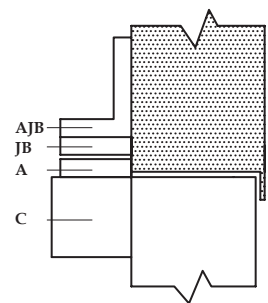
Example 5 - Flush Door (push side)

- Angle jamb bracket mounts to the face of the header (AJB)
- Jamb bracket attaches to the angle jamb bracket (JB)
- Channel mounts to the face of the door (C)



Example 6 - Pull Side Installation

- Angle jamb bracket mounts to the face of the header (AJB)
- Jamb bracket attaches to the angle jamb bracket (JB)
- Channel mounts to the face of the door (C)



Parts

Fasteners

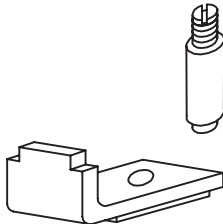
Standard screw packs for all models are offered:

- **1000-SCR x Finish** - 1000 & 1000SL Series
- **1000A-SCR x Finish** - 1000A & 1000SA Series
- **3500-SCR x Finish** - 3500 Series
- **4000-SCR x Finish** - 4000 Series
- **4400-SCR x Finish** - 3300A, 3400 & 4400 Series
- **7000-SCR x Finish** - 7000 Series
- **HD7000-SCR x Finish** - HD7000 Series
- **8000-SCR x Finish** - 8000 Series
- **HD8000-SCR x Finish** - HD8000 Series
- **9000-SCR x Finish** - 9000 & 9000A Series

Friction Conversion Kit

Allows you to change a stop function to a friction function in the field:

- **4000F-KIT** - 4000, 4400 & 3300A Series
- **9000F-KIT** - 1000, 1000A, 9000 & 9000A Series



Hold-Open Conversion Kit

Allows you to change a stop function to a hold-open function in the field:

- **1000HO-KIT** - 1000 & 1000A Series
- **4000HO-KIT** - 4000, 4400 & 3300A Series
- **9000HO-KIT** - 9000 & 9000A Series

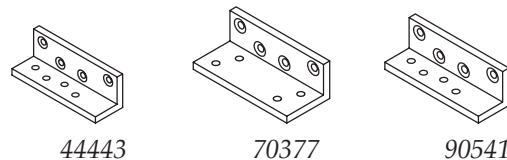


Angle Jamb Brackets

Available for surface mount models – converts standard installation to pull side mount or push side flush mount mounting (see page B-3 for details).

Specify finish when ordering.

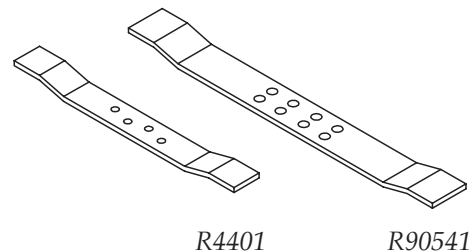
- **44443** - 3300A & 4400 Series
- **70377** - 7000 Series
- **90541** - 8000, 9000 & 9000A Series



Frame Reinforcement Bracket

1/8" thick hollow metal frame reinforcements pre-drilled and tapped for ABH concealed jamb brackets:

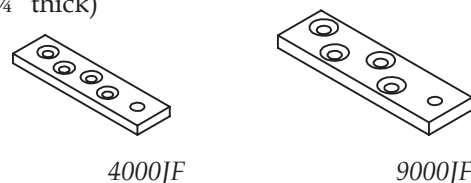
- **R4401** - 4000 Series
- **R90541** - 1000 & 1000SL Series



Jamb Bracket Fillers and/or Shims

Can be used as a shim to drop down an overhead holder for possible installation conflicts or as jamb bracket filler plate to fill in old concealed preps in frame heads. **Specify finish when ordering.**

- **4000JF** - 4000, 4400 & 3300A Series (3/16" thick)
- **9000JF** - 1000, 1000A, 8000, 9000 & 9000A Series (1/4" thick)



Options

“AJB” - Angle Jamb Brackets

Available for most surface mount models – converts standard installation to pull side mount or push side flush mount mounting (see page B-3 for details).

They are also available separately, as a part.

- 44443 - 3300A & 4400 Series
- 70377 - 7000 Series
- 90541 - 8000, 9000 & 9000A Series

“CL” - For Use with Cam Lift Hinges

Custom unit for use with cam lift hinges (½” maximum door lift)

“HC” - Hold Closed

Special mechanism is integrated into the overhead stop holding the door closed at 0° and essentially doubling as a roller latch (available for stop function only). Hold-closed mechanism can be disengaged.

“LL” - Lead Lined

Lead is provided to cover where mounting holes will pierce lead on lead-lined doors.

“LS” - Less Spring

Typically used with a single point electronic door closer, overhead stop is supplied without the shock absorbing spring (stop function only).

“N” - All Stainless Steel (Non-Ferrous) Components

Designed for use in wet environments - all stainless steel or non-ferrous components are provided with the unit, including all internal components and screws.

“SEC” - Security Fasteners

Security fasteners are provided in lieu of standard fasteners for all exposed mounting holes – specify door and frame material when ordering.

“SNB” - Sex Bolts

Sex bolt fasteners are added to 3500 series surface mount model screw pack, as they are not supplied standard.

“T” - Threaded Pivot Screw and Nylon Washer in Lieu of Jamb Bracket

Typically used when space is limited in the frame head for installation or when installing a concealed model in an existing frame with minimal field prep.

“THICK” - Door Thickness other than 1-¾”

Custom fasteners will be supplied to accommodate various door thicknesses other than 1-¾” - specify door thickness.

“SPECIAL” - Special Layout

ABH can provide custom units for countless non-standard applications. See page B-6 for order form or contact factory for assistance.

Overhead Holder Options - Compatibility Chart

| Series | | AJB | CL | HC | LL | LS | N | SEC | SNB | T | THICK | SPECIAL |
|-----------------|--------|-----|----|----|----|----|---|-----|-----|---|-------|---------|
| Concealed Mount | 1000 | | | ● | ● | ● | ● | ● | | ● | | ● |
| | 1000A | | | ● | ● | ● | ● | ● | | | | ● |
| | 1000SL | | | | ● | ● | ● | ● | | ● | | ● |
| | 1000SA | | | | ● | ● | ● | ● | | | | ● |
| | 4000 | | | ● | ● | | ● | ● | | ● | | ● |
| Surface Mount | 3300A | ● | ● | ● | ● | ● | ● | ● | | ● | ● | ● |
| | 3400 | | | ● | ● | ● | ● | ● | | | ● | ● |
| | 3500 | | | | ● | | | ● | ● | | ● | ● |
| | 4400 | ● | ● | ● | ● | ● | ● | ● | | ● | ● | ● |
| | 7000 | ● | | | ● | | ● | ● | | | ● | ● |
| | HD7000 | | | | ● | | ● | ● | | | ● | ● |
| | 8000 | ● | | | ● | ● | | ● | | | ● | ● |
| | 9000 | ● | ● | ● | ● | ● | ● | ● | | ● | ● | ● |
| 9000A | ● | ● | ● | ● | ● | ● | ● | | ● | ● | ● | |



Overhead Holders & Stops



Innovation, Quality,
Customer Service...

“SPECIAL” - Special Layouts

ABH has many special layouts that have already been completed. Complete this form and fax it or email to abhinfo@abhmfg.com. A customer service representative will provide you with assistance promptly.

Date: _____

Company: _____

Contact: _____

Phone: _____

Email: _____

Job Name: _____

Overhead Holder/Stop Series: _____

Quantity: _____

Function: _____
(hold-open, stop or friction)

Finish: _____

Door Frame Opening Size: _____

Door Material: _____
(wood or metal)

Degree of Opening: _____

Frame Material: _____
(wood or metal)

Door Thickness: _____

How is the door hung?

| Type | Manufacturer | Model |
|-------------------|--------------|-------|
| Butt Hinge | | |
| Continuous Hinge | | |
| Offset Pivot | | |
| Center Hung Pivot | | |
| Other | | |

Is there other hardware at the top of the door? (yes or no) _____

If yes, please provide information in chart.

| Hardware Description | Manufacturer | Model |
|----------------------|--------------|-------|
| | | |
| | | |
| | | |



Overhead Holders & Stops



Innovation, Quality,
Customer Service...

1000 Series Concealed Mount, Heavy Duty



Standard Features

- Concealed mount
- Heavy duty
- Stop, hold-open and friction functions available
- Single or double acting doors
- Non-handed
- For interior or exterior use on frequent traffic and heavy weight doors
- Standard installation from 85° to 110° of opening (5° increments)
- Shock absorbing spring provides 3° to 5° cushion before dead-stop
- 1-3/4" minimum door thickness
- UL Listed as Miscellaneous Fire Door Accessories for use on wood fire doors rated up to 90 minutes and metal fire doors rated up to 3 hours (stop function only)
- Average weight per unit = 6 lbs.

Options Available

(see page B-5 for details)

- **SEC** - Security fasteners
- **LL** - For lead-lined door applications
- **LS** - Less shock-absorbing spring for special applications
- **N** - All stainless steel (non-ferrous) components for wet environments to prevent corrosion
- **T** - Jamb bracket is replaced with a threaded pivot screw and nylon washer
- **HC** - Hold Closed
- **SPECIAL** - Contact ABH if the dimensions, hardware or specifications differ from what is shown on the template or if additional hardware is being used at the top of the door. A custom template and/or unit may be required.
- If using a closer, please go to our website and reference "ABH Overhead Holder & Stop Compatibility Chart" to determine possible conflict.

| Door Frame Opening | | Model Number | | |
|--------------------------------------|-----------------|--------------|--------|----------|
| Hinges, Swing Clear or Offset Pivots | Center Hung | Hold Open | Stop | Friction |
| 18" - 22-15/16" | - | 1016 | 1026 | 1036 |
| 23" - 26-15/16" | - | 1017 | 1027 | 1037 |
| 27" - 29-15/16" | 30" - 32-15/16" | 1011 | 1021 | 1031 |
| 30" - 35-15/16" | 33" - 38-15/16" | 1012 | 1022 | 1032 |
| 36" - 39-15/16" | 39" - 42-15/16" | 1013 | 1023 | 1033 |
| 40" - 43-15/16" | 43" - 46-15/16" | 1014 | 1024 | 1034 |
| 44" - 52" | 47" - 54" | 1015 | 1025 | 1035 |
| ANSI Code | | C01511 | C01541 | C01531 |

Material

- **Stainless steel** is the standard base material for arm, channel and jamb bracket for all finishes.

Specify When Ordering

- Model Number
- Finish
- Option(s), if applicable



Architectural Builders Hardware Manufacturing, Inc.
1222 Ardmore Avenue, Itasca, IL 60143
Tel: 630-875-9900 • Fax: 630-875-9918 / 800-932-9224
Web: www.abhmfg.com • Email: abhinfo@abhmfg.com

Overhead Holders & Stops



Innovation, Quality,
Customer Service...

1000A Series Concealed Mount, Heavy Duty, Adjustable



Standard Features

- Concealed mount
- Heavy duty
- Stop, hold-open and friction functions available
- Single or double acting doors
- Non-handed
- For interior or exterior use on frequent traffic and heavy weight doors
- Degree of opening is field-adjustable after installation from 85° to 110° (5° increments)
- Shock absorbing spring provides 3° to 5° cushion before dead-stop
- 1-3/4" minimum door thickness
- UL Listed as Miscellaneous Fire Door Accessories for use on wood fire doors rated up to 90 minutes and metal fire doors rated up to 3 hours (stop function only)
- Average weight per unit = 6 lbs.

Options Available

(see page B-5 for details)

- **SEC** - Security fasteners
- **LL** - For lead-lined door applications
- **LS** - Less shock-absorbing spring for special applications
- **N** - All stainless steel (non-ferrous) components for wet environments to prevent corrosion
- **HC** - Hold Closed
- **SPECIAL** - Contact ABH if the dimensions, hardware or specifications differ from what is shown on the template or if additional hardware is being used at the top of the door. A custom template and/or unit may be required.
- If using a closer, please go to our website and reference "ABH Overhead Holder & Stop Compatibility Chart" to determine possible conflict.

Material

- **Stainless steel** is the standard base material for arm, channel and jamb bracket for all finishes.

| Door Frame Opening | Model Number | | |
|--------------------------------------|---------------|---------------|---------------|
| Hinges, Swing Clear or Offset Pivots | Hold Open | Stop | Friction |
| 27" - 29-15/16" | 1011A | 1021A | 1031A |
| 30" - 35-15/16" | 1012A | 1022A | 1032A |
| 36" - 39-15/16" | 1013A | 1023A | 1033A |
| 40" - 43-15/16" | 1014A | 1024A | 1034A |
| 44" - 52" | 1015A | 1025A | 1035A |
| ANSI Code | C01511 | C01541 | C01531 |

Specify When Ordering

- Model Number
- Finish
- Option(s), if applicable

Architectural Builders Hardware Manufacturing, Inc.
1222 Ardmore Avenue, Itasca, IL 60143
Tel: 630-875-9900 • Fax: 630-875-9918 / 800-932-9224
Web: www.abhmfg.com • Email: abhinfo@abhmfg.com



Overhead Holders & Stops



Innovation, Quality,
Customer Service...

1000SL Series Concealed Mount, Heavy Duty, Slim Line



Standard Features

- Concealed mount
- Heavy duty
- Slim line channel designed for aluminum store front doors
- Stop and hold-open functions available
- Single or double acting doors
- Non-handed
- For interior or exterior use on frequent traffic and heavy weight doors
- Standard installation from 85° to 110° of opening (5° increments)
- Shock absorbing spring provides 3° to 5° cushion before dead-stop
- 1-3/4" minimum door thickness
- UL Listed as Miscellaneous Fire Door Accessories for use on wood fire doors rated up to 90 minutes and metal fire doors rated up to 3 hours (stop function only)
- Average weight per unit = 5 lbs.

Options Available

(see page B-5 for details)

- **SEC** - Security fasteners
- **LL** - For lead-lined door applications
- **LS** - Less shock-absorbing spring for special applications
- **N** - All stainless steel (non-ferrous) components for wet environments to prevent corrosion (stop function only)
- **T** - Jamb bracket is replaced with a threaded pivot screw and nylon washer
- **SPECIAL** - Contact ABH if the dimensions, hardware or specifications differ from what is shown on the template or if additional hardware is being used at the top of the door. A custom template and/or unit may be required.
- If using a closer, please go to our website and reference "ABH Overhead Holder & Stop Compatibility Chart" to determine possible conflict.

| Door Frame Opening | | Model Number | |
|-------------------------|-----------------|--------------|--------|
| Hinges or Offset Pivots | Center Hung | Hold Open | Stop |
| 27" - 29-15/16" | 30" - 32-15/16" | 1011SL | 1021SL |
| 30" - 35-15/16" | 33" - 38-15/16" | 1012SL | 1022SL |
| 36" - 39-15/16" | 39" - 42-15/16" | 1013SL | 1023SL |
| 40" - 43-15/16" | 43" - 46-15/16" | 1014SL | 1024SL |
| 44" - 52" | 47" - 54" | 1015SL | 1025SL |
| ANSI Code | | C01511 | C01541 |

Material

- **Stainless steel** is the standard base material for arm and jamb bracket for all finishes.

Specify When Ordering

- Model Number
- Finish
- Option(s), if applicable



Architectural Builders Hardware Manufacturing, Inc.
1222 Ardmore Avenue, Itasca, IL 60143
Tel: 630-875-9900 • Fax: 630-875-9918 / 800-932-9224
Web: www.abhmfg.com • Email: abhinfo@abhmfg.com

Overhead Holders & Stops



Innovation, Quality,
Customer Service...

1000SA Series Concealed Mount, Heavy Duty, Slim Line, Adjustable



Standard Features

- Concealed mount
- Heavy duty
- Slim line channel designed for aluminum store front doors
- Stop and hold-open functions available
- Single or double acting doors
- Non-handed
- For interior or exterior use on frequent traffic and heavy weight doors
- Degree of opening is field-adjustable after installation from 85° to 110° (5° increments)
- Shock absorbing spring provides 3° to 5° cushion before dead-stop
- 1-3/4" minimum door thickness
- UL Listed as Miscellaneous Fire Door Accessories for use on wood fire doors rated up to 90 minutes and metal fire doors rated up to 3 hours (stop function only)
- Average weight per unit = 5 lbs.

Options Available

(see page B-5 for details)

- **SEC** - Security fasteners
- **LL** - For lead-lined door applications
- **LS** - Less shock-absorbing spring for special applications
- **N** - All stainless steel (non-ferrous) components for wet environments to prevent corrosion (stop function only)
- **SPECIAL** - Contact ABH if the dimensions, hardware or specifications differ from what is shown on the template or if additional hardware is being used at the top of the door. A custom template and/or unit may be required.
- If using a closer, please go to our website and reference "ABH Overhead Holder & Stop Compatibility Chart" to determine possible conflict.

Material

- **Stainless steel** is the standard base material for arm and jamb bracket for all finishes.

| Door Frame Opening | Model Number | |
|-------------------------|---------------|---------------|
| Hinges or Offset Pivots | Hold Open | Stop |
| 27" - 29-15/16" | 1011SA | 1021SA |
| 30" - 35-15/16" | 1012SA | 1022SA |
| 36" - 39-15/16" | 1013SA | 1023SA |
| 40" - 43-15/16" | 1014SA | 1024SA |
| 44" - 52" | 1015SA | 1025SA |
| ANSI Code | C01511 | C01541 |

Specify When Ordering

- Model Number
- Finish
- Option(s), if applicable



Overhead Holders & Stops



Innovation, Quality,
Customer Service...

4000 Series Concealed Mount, Medium Duty



Standard Features

- Concealed mount
- Medium duty
- Stop, hold-open and friction functions available
- Single or double acting doors
- Non-handed
- For interior use on moderate traffic and medium weight doors
- Standard installation from 85° to 110° of opening (5° increments)
- Shock absorbing spring provides 3° to 5° cushion before dead-stop
- 1-3/8" minimum door thickness
- UL Listed as Miscellaneous Fire Door Accessories for use on wood fire doors rated up to 90 minutes and metal fire doors rated up to 3 hours (stop function only)
- Average weight per unit = 2 lbs.

Options Available

(see page B-5 for details)

- **SEC** - Security fasteners
- **LL** - For lead-lined door applications
- **N** - All stainless steel (non-ferrous) components for wet environments to prevent corrosion
- **T** - Threaded pivot screw and nylon washer to replace jamb bracket
- **HC** - Hold Closed
- **SPECIAL** - Contact ABH if the dimensions, hardware or specifications differ from what is shown on the template or if additional hardware is being used at the top of the door. A custom application and/or unit may be required.
- If using a closer, please go to our website and reference "ABH Overhead Holder & Stop Compatibility Chart" to determine possible conflict.

Material

- **Stainless steel** is the standard base material for arm, channel and jamb bracket for all finishes.

| Door Frame Opening | | Model Number | | |
|--------------------------------------|-----------------|--------------|--------|----------|
| Hinges, Swing Clear or Offset Pivots | Center Hung | Hold Open | Stop | Friction |
| 18" - 23-15/16" * | - | 4011 | 4021 | 4031 |
| 24" - 29-15/16" | - | 4012 | 4022 | 4032 |
| 30" - 35-15/16" | 32" - 37-15/16" | 4013 | 4023 | 4033 |
| 36" - 48" | 38" - 48" | 4014 | 4024 | 4034 |
| ANSI Code | | C04511 | C04541 | C04531 |

* Butt Hinges only for this size

Specify When Ordering

- Model Number
- Finish
- Option(s), if applicable



Architectural Builders Hardware Manufacturing, Inc.
1222 Ardmore Avenue, Itasca, IL 60143
Tel: 630-875-9900 • Fax: 630-875-9918 / 800-932-9224
Web: www.abhmfg.com • Email: abhinfo@abhmfg.com

Overhead Holders & Stops



Innovation, Quality,
Customer Service...

3300A Series Surface Mount, Medium Duty, Adjustable



Standard Features

- Surface mount
- Medium duty
- Stop, hold-open and friction functions available
- Single acting doors only
- Non-handed
- For interior use on moderate traffic and medium weight doors
- Degree of opening is field-adjustable after installation from 85° to 110° (5° increments)
- Shock absorbing spring provides 3° to 5° cushion before dead-stop
- Standard fasteners supplied with sex bolts for 1-3/4" to 1-7/8" thick door (see options for other door thicknesses)
- UL Listed as Miscellaneous Fire Door Accessories for use on wood fire doors rated up to 90 minutes and metal fire doors rated up to 3 hours (stop function only)
- Average weight per unit = 3 lbs.

Options Available

(see page B-5 for details)

- **THICK** - Fasteners for doors other than 1-3/4" to 1-7/8" thick
- Specify door thickness
- **SEC** - Security fasteners
- **AJB** - 44443 Angle Jamb Bracket for pull side mount or push side flush mount
- **LL** - For lead-lined door applications
- **CL** - For use with cam lift hinges
- **LS** - Less shock-absorbing spring for special applications
- **N** - All stainless steel (non-ferrous) components for wet environments to prevent corrosion
- **T** - Jamb bracket is replaced with a threaded pivot screw and nylon washer
- **HC** - Hold closed
- **SPECIAL** - Contact ABH if the dimensions, hardware, or specifications differ from what is shown on the template or if additional hardware is being used at the top of the door. A custom application and/or unit may be required.
- If using a closer, please go to our website and reference "ABH Overhead Holder & Stop Compatibility Chart" to determine possible conflict.

| Door Frame Opening | Model Number | | |
|--------------------|-------------------------|---------------|---------------|
| | Hinges or Offset Pivots | Hold Open | Stop |
| 24" - 29-15/16" | 3311A | 3321A | 3331A |
| 30" - 35-15/16" | 3312A | 3322A | 3332A |
| 36" - 42" | 3313A | 3323A | 3333A |
| ANSI Code | C05511 | C05541 | C05531 |

Material

- **Stainless steel** is the standard base material for arm, channel and jamb bracket for all finishes.

Specify When Ordering

- Model Number
- Finish
- Option(s), if applicable

Architectural Builders Hardware Manufacturing, Inc.
1222 Ardmore Avenue, Itasca, IL 60143
Tel: 630-875-9900 • Fax: 630-875-9918 / 800-932-9224
Web: www.abhmfg.com • Email: abhinfo@abhmfg.com



Overhead Holders & Stops



Innovation, Quality,
Customer Service...

3400 Series Surface Mount, Medium Duty



Standard Features

- Surface mount
- Medium duty
- Side jamb mount for doors that do not extend to frame header
- Ideal for dressing room and washroom stall doors with frames
- Stop, hold-open and friction functions available
- Single acting doors only
- Non-handed
- Standard installation from 90° to 100° of opening (5° increments)
- Shock absorbing spring provides 3° to 5° cushion before dead-stop
- Standard fasteners supplied with sex bolts for 1-3/4" to 1-7/8" thick door (see options for other door thicknesses)
- Average weight per unit = 3 lbs.

Options Available

(see page B-5 for details)

- **THICK** - Fasteners for doors other than 1-3/4" to 1-7/8" thick - Specify door thickness
- **SEC** - Security fasteners
- **LL** - For lead-lined door applications
- **LS** - Less shock-absorbing spring for special applications
- **N** - All stainless steel (non-ferrous) components for wet environments to prevent corrosion
- **HC** - Hold closed
- **SPECIAL** - Contact ABH if the dimensions, hardware or specifications differ from what is shown on the template or if additional hardware is being used at the top of the door. A custom template and/or unit may be required.
- If using a closer, please go to our website and reference "ABH Overhead Holder & Stop Compatibility Chart" to determine possible conflict.

Material

- **Stainless steel** is the standard base material for arm, channel and jamb bracket for all finishes.

| Door Frame Opening | Model Number | | |
|--------------------|--------------|------|----------|
| Hinges | Hold Open | Stop | Friction |
| 24" - 36" | 3414 | 3424 | 3434 |

Specify When Ordering

- Model Number
- Finish
- Option(s), if applicable



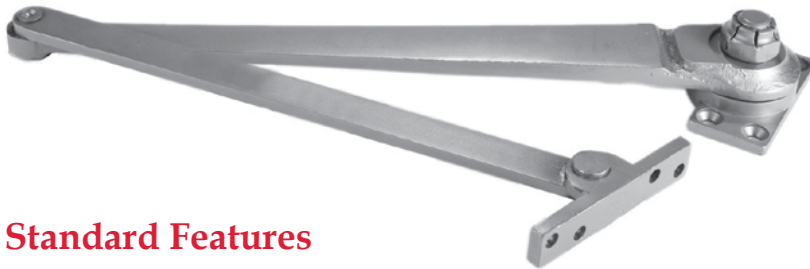
Architectural Builders Hardware Manufacturing, Inc.
1222 Ardmore Avenue, Itasca, IL 60143
Tel: 630-875-9900 • Fax: 630-875-9918 / 800-932-9224
Web: www.abhmfg.com • Email: abhinfo@abhmfg.com

Overhead Holders & Stops



Innovation, Quality,
Customer Service...

3500 Series Surface Mount, Parallel Arm Holder



Standard Features

- Surface mount
- Heavy duty
- Adjustable hold-open position from 135° to 180°
- Single acting doors only
- For use on the inactive leaf of a pair of doors where a door closer is installed on the active leaf
- For interior or exterior use on frequent traffic and heavy weight doors
- For door openings 24" - 36"
- Units are handed - specify when ordering
- Standard fasteners supplied for 1-3/4" to 1-7/8" thick door (see options for other door thicknesses)
- Average weight per unit = 4 lbs.

Options Available

(see page B-5 for details)

- **THICK** - Fasteners for doors other than 1-3/4" to 1-7/8" thick - Specify door thickness
- **SNB** - Sex bolts provided for door portion screw detail
- **SEC** - Security fasteners
- **LL** - For lead-lined door applications
- **SPECIAL** - Contact ABH if the dimensions, hardware or specifications differ from what is shown on the template or if additional hardware is being used at the top of the door. A custom template and/or unit may be required.
- If using a closer, please go to our website and reference "ABH Overhead Holder & Stop Compatibility Chart" to determine possible conflict.

Material

- **Aluminum die casting** is the standard base material for arms and jamb bracket for all finishes.

Specify When Ordering

- Model Number
- Handing
- Finish
- Option(s), if applicable

| Door Frame Opening | Model Number |
|------------------------|--------------|
| Butts or Offset Pivots | Hold Open |
| 24" - 36" | 3500 |



Overhead Holders & Stops



Innovation, Quality,
Customer Service...

4400 Series Surface Mount, Medium Duty



Standard Features

- Surface mount
- Medium duty
- Stop, hold-open and friction functions available
- Single acting doors only
- Non-handed
- For interior use on moderate traffic and medium weight doors
- Standard installation from 85° to 110° of opening (5° increments)
- Shock absorbing spring provides 3° to 5° cushion before dead-stop
- Standard fasteners supplied with sex bolts for 1-3/4" to 1-7/8" thick door (see options for other door thicknesses)
- UL Listed as Miscellaneous Fire Door Accessories for use on wood fire doors rated up to 90 minutes and metal fire doors rated up to 3 hours (stop function only)
- Average weight per unit = 2 lbs.

Options Available

(see page B-5 for details)

- **THICK** - Fasteners for doors other than 1-3/4" to 1-7/8" thick - Specify door thickness
- **SEC** - Security fasteners
- **AJB** - 44443 Angle jamb bracket for pull side mount or push side flush mount
- **LL** - For lead-lined door applications
- **LS** - Less shock-absorbing spring for special applications
- **N** - All stainless steel (non-ferrous) components for wet environments to prevent corrosion
- **T** - Jamb bracket is replaced with a threaded pivot screw and nylon washer
- **HC** - Hold closed
- **CL** - For use with cam lift hinges
- **HC** - Hold Closed
- **SPECIAL** - Contact ABH if the dimensions, hardware or specifications differ from what is shown on the template or if additional hardware is being used at the top of the door. A custom application and/or unit may be required.
- If using a closer, please go to our website and reference "ABH Overhead Holder & Stop Compatibility Chart" to determine possible conflict.

Material

- **Stainless steel** is the standard base material for arm, channel and jamb bracket for all finishes.

Specify When Ordering

- Model Number
- Finish
- Option(s), if applicable

| Door Frame Opening | | Model Number | | |
|------------------------------------|---------------------|--------------|--------|----------|
| Hinges, Swing Clear, Offset Pivots | Center Hung | Hold Open | Stop | Friction |
| 18" - 23-15/16" | 22" - 27-7/16" | 4411 | 4421 | 4431 |
| 24" - 29-15/16" | 27-1/2" - 33-7/16" | 4412 | 4422 | 4432 |
| 30" - 35-15/16" | 33-1/2" - 38-15/16" | 4413 | 4423 | 4433 |
| 36" - 48" | 39" - 48" | 4414 | 4424 | 4434 |
| ANSI Code | | C05511 | C05541 | C05531 |



Architectural Builders Hardware Manufacturing, Inc.
1222 Ardmore Avenue, Itasca, IL 60143
Tel: 630-875-9900 • Fax: 630-875-9918 / 800-932-9224
Web: www.abhmfg.com • Email: abhinfo@abhmfg.com

Overhead Holders & Stops



Innovation, Quality,
Customer Service...

7000 Series Surface Mount, Heavy Duty



Standard Features

- Surface mount
- Heavy duty
- Stop and hold-open functions available
- Single acting doors only
- Non-handed
- For interior or exterior use on frequent traffic and heavy weight doors
- Standard installation from 85° to 110° of opening (5° increments)
- Shock absorbing spring provides 3° to 5° cushion before dead-stop
- Standard fasteners supplied with sex bolts for 1-3/4" to 2" thick door (see options for other door thicknesses)
- UL Listed as Miscellaneous Fire Door Accessories for use on wood fire doors rated up to 90 minutes and metal fire doors rated up to 3 hours (stop function only)
- Average weight per unit = 3 lbs.

Options Available

(see page B-5 for details)

- **THICK** - Fasteners for doors other than 1-3/4" to 2" thick
- Specify door thickness
- **SEC** - Security fasteners
- **AJB** - 70377 Angle jamb bracket for pull side mount or push side flush mount
- **LL** - For lead-lined door applications
- **N** - All stainless steel (non-ferrous) components for wet environments to prevent corrosion
- **SPECIAL** - Contact ABH if the dimensions, hardware or specifications differ from what is shown on the template or if additional hardware is being used at the top of the door. A custom template and/or unit may be required.
- If using a closer, please go to our website and reference "ABH Overhead Holder & Stop Compatibility Chart" to determine possible conflict

| Door Frame Opening | | Model Number | |
|-------------------------|--------------------|--------------|--------|
| Hinges or Offset Pivots | Center Hung | Hold Open | Stop |
| 23" - 28-1/16" | 24" - 31-1/16" | 7010 | 7020 |
| 29" - 34-1/16" | 32" - 38-7/16" | 7011 | 7021 |
| 35" - 40-1/16" | 38-1/2" - 44-3/16" | 7012 | 7022 |
| 41" - 46-1/16" | 44-1/4" - 50-3/16" | 7013 | 7023 |
| 47" - 54" | 50-1/4" - 60" | 7014 | 7024 |
| ANSI Code | | C08511 | C08541 |

Material

- **Stainless steel** is the standard base material for jamb bracket and door bracket on all finishes (bar is cold rolled steel, cad plated).

Specify When Ordering

- Model Number
- Finish
- Option(s), if applicable

Architectural Builders Hardware Manufacturing, Inc.
1222 Ardmore Avenue, Itasca, IL 60143
Tel: 630-875-9900 • Fax: 630-875-9918 / 800-932-9224
Web: www.abhmfg.com • Email: abhinfo@abhmfg.com

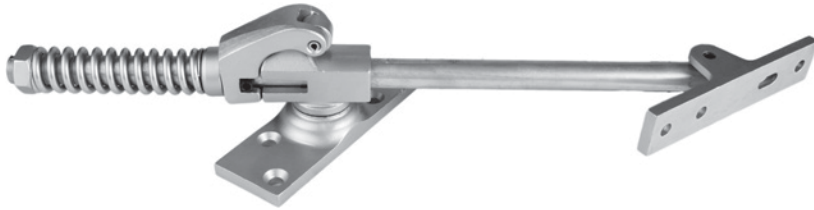


Overhead Holders & Stops



Innovation, Quality,
Customer Service...

HD7000 Series Surface Mount, Extra Heavy Duty



Standard Features

- Surface mount
- Extra heavy duty - used in correctional institutions and bank vault door applications
- Stop and hold-open functions available
- Single acting doors only
- Non-handed
- For interior or exterior use on frequent traffic and extra heavy weight doors
- Standard installation from 85° to 110° of opening (5° increments)
- Shock absorbing spring provides 3° to 5° cushion before dead-stop
- Standard fasteners supplied with sex bolts for 1-3/4" to 2" thick door (see options for other door thicknesses)
- UL Listed as Miscellaneous Fire Door Accessories for use on wood fire doors rated up to 90 minutes and metal fire doors rated up to 3 hours (stop function only)
- Average weight per unit = 10 lbs.

Options Available

(see page B-5 for details)

- **THICK** - Fasteners for doors other than 1-3/4" to 2" thick - Specify door thickness
- **SEC** - Security fasteners
- **LL** - For lead-lined door applications
- **N** - All stainless steel (non-ferrous) components for wet environments to prevent corrosion
- **SPECIAL** - Contact ABH if the dimensions, hardware or specifications differ from what is shown on the template or if additional hardware is being used at the top of the door. A custom template and/or unit may be required.
- If using a closer, please go to our website and reference "ABH Overhead Holder & Stop Compatibility Chart" to determine possible conflict

Material

- **Plated cold rolled steel** is the base material for all painted finishes.

| Door Frame Opening | | Model Number | |
|-------------------------|-----------------|--------------|--------|
| Hinges or Offset Pivots | Center Hung | Hold Open | Stop |
| 24" - 29-15/16" | 26" - 31-15/16" | HD7010 | HD7020 |
| 30" - 35-15/16" | 32" - 38-15/16" | HD7011 | HD7021 |
| 36" - 39-15/16" | 39" - 42-15/16" | HD7012 | HD7022 |
| 40" - 47-15/16" | 43" - 50-15/16" | HD7013 | HD7023 |
| 48" - 54" | 51" - 60" | HD7014 | HD7024 |
| ANSI Code | | C08511 | C08541 |

Specify When Ordering

- Model Number
- Finish
- Option(s), if applicable



Architectural Builders Hardware Manufacturing, Inc.
1222 Ardmore Avenue, Itasca, IL 60143
Tel: 630-875-9900 • Fax: 630-875-9918 / 800-932-9224
Web: www.abhmfg.com • Email: abhinfo@abhmfg.com

Overhead Holders & Stops



Innovation, Quality,
Customer Service...

8000 Series Surface Mount, Heavy Duty

Standard Features

- Surface mount
- Heavy duty
- **NY SCA approved**
- Stop and hold-open functions available
- Single acting doors only
- Non-handed
- For interior or exterior use on frequent traffic and heavy weight doors
- Standard installation from 85° to 110° of opening (5° increments)
- Shock absorbing spring provides 3° to 5° cushion before dead-stop
- Standard fasteners supplied with sex bolts for 1-3/4" to 2-1/4" thick door (see options for other door thicknesses)
- UL Listed as Miscellaneous Fire Door Accessories for use on wood fire doors rated up to 90 minutes and metal fire doors rated up to 3 hours (stop function only)
- Average weight per unit = 5 lbs.



Options Available

(see page B-5 for details)

- **THICK** - Fasteners for doors other than 1-3/4" to 2-1/4" thick - Specify door thickness
- **SEC** - Security fasteners
- **AJB** - 90541 Angle jamb bracket for push side flush mount
- **LL** - For lead-lined door applications
- **LS** - Less shock-absorbing spring for special applications
- **HD** - Extra heavy duty application - Two additional sex bolts and fasteners provided for door
- **SPECIAL** - Contact ABH if the dimensions, hardware or specifications differ from what is shown on the template or if additional hardware is being used at the top of the door. A custom template and/or unit may be required.
- If using a closer, please go to our website and reference "ABH Overhead Holder & Stop Compatibility Chart" to determine possible conflict.

Material

- **Stainless steel** is the standard base material for arm, channel and jamb bracket for all finishes.

| Door Frame Opening | | Model Number | |
|-------------------------|---------------------|---------------|---------------|
| Hinges or Offset Pivots | Center Hung | Hold Open | Stop |
| 27" - 32-7/16" | 29-1/2" - 34-15/16" | 8010 | 8020 |
| 32-1/2" - 38-11/16" | 35" - 41-7/16" | 8011 | 8021 |
| 38-3/4" - 42-7/16" | 41-1/2" - 44-15/16" | 8012 | 8022 |
| 42-1/2" - 54" | 45" - 56" | 8013 | 8023 |
| ANSI Code | | C03511 | C03541 |

Specify When Ordering

- Model Number
- Finish
- Option(s), if applicable



Overhead Holders & Stops



Innovation, Quality,
Customer Service...

9000 Series Surface Mount, Heavy Duty



Standard Features

- Surface mount
- Heavy duty
- Stop, hold-open and friction functions available
- Single acting doors only
- Non-handed
- For interior or exterior use on frequent traffic and heavy weight doors
- Standard installation from 85° to 110° of opening (5° increments)
- Shock absorbing spring provides 3° to 5° cushion before dead-stop
- Standard fasteners supplied with sex bolts for 1-3/4" to 2-1/4" thick door (see options for other door thicknesses)
- UL Listed as Miscellaneous Fire Door Accessories for use on wood fire doors rated up to 90 minutes and metal fire doors rated up to 3 hours (stop function only)
- Average weight per unit = 5 lbs.

Options Available

(see page B-5 for details)

- **THICK** - Fasteners for doors other than 1-3/4" to 2-1/4" thick - Specify door thickness
- **SEC** - Security fasteners
- **AJB** - 90541 Angle jamb bracket for pull side mount or push side flush mount
- **LL** - For lead-lined door applications
- **LS** - Less shock-absorbing spring for special applications
- **N** - All stainless steel (non-ferrous) components for wet environments to prevent corrosion
- **T** - Threaded pivot screw and nylon washer to replace jamb bracket
- **HC** - Hold Closed
- **CL** - For use with cam lift hinges
- **SPECIAL** - Contact ABH if the dimensions, hardware or specifications differ from what is shown on the template or if additional hardware is being used at the top of the door. A custom template and/or unit may be required.
- If using a closer, please go to our website and reference "ABH Overhead Holder & Stop Compatibility Chart" to determine possible conflict.

Material

- **Stainless steel** is the standard base material for arm, channel and jamb bracket for all finishes.

Specify When Ordering

- Model Number
- Finish
- Option(s), if applicable

| Door Frame Opening | | Model Number | | |
|--------------------------------------|-----------------|--------------|--------|----------|
| Hinges, Swing Clear or Offset Pivots | Center Hung | Hold Open | Stop | Friction |
| 24" - 27-15/16" | 26" - 29-15/16" | 9018 | 9028 | 9038 |
| 28" - 29-15/16" | 30" - 33-15/16" | 9011 | 9021 | 9031 |
| 30" - 31-15/16" | 34" - 35-15/16" | 9012 | 9022 | 9032 |
| 32" - 35-15/16" | 36" - 38-15/16" | 9013 | 9023 | 9033 |
| 36" - 39-15/16" | 39" - 40-15/16" | 9014 | 9024 | 9034 |
| 40" - 41-15/16" | 41" - 44-15/16" | 9015 | 9025 | 9035 |
| 42" - 43-15/16" | 45" - 46-15/16" | 9016 | 9026 | 9036 |
| 44" - 54" | 47" - 56" | 9017 | 9027 | 9037 |
| ANSI Code | | C02511 | C02541 | C02531 |



Architectural Builders Hardware Manufacturing, Inc.
1222 Ardmore Avenue, Itasca, IL 60143
Tel: 630-875-9900 • Fax: 630-875-9918 / 800-932-9224
Web: www.abhmfg.com • Email: abhinfo@abhmfg.com

Overhead Holders & Stops



Innovation, Quality,
Customer Service...

9000A Series Surface Mount, Heavy Duty, Adjustable



Standard Features

- Surface mount
- Heavy duty
- Stop, hold-open and friction functions available
- Single acting doors only
- Non-handed
- For interior or exterior use on frequent traffic and heavy weight doors
- Degree of opening is field-adjustable after installation from 85° to 110° (5° increments)
- Shock absorbing spring provides 3° to 5° cushion before dead-stop
- Standard fasteners supplied with sex bolts for 1-3/4" to 2-1/4" thick door (see options for other door thicknesses)
- UL Listed as Miscellaneous Fire Door Accessories for use on wood fire doors rated up to 90 minutes and metal fire doors rated up to 3 hours (stop function only)
- Average weight per unit = 6 lbs.

Options Available

(see page B-5 for details)

- **THICK** - Fasteners for doors other than 1-3/4" to 2-1/4" thick
- Specify door thickness
- **SEC** - Security fasteners
- **AJB** - 90541 Angle jamb bracket for pull side mount or push side flush mount
- **LL** - For lead-lined door applications
- **CL** - For use with cam lift hinges
- **LS** - Less shock-absorbing spring for special applications
- **N** - All stainless steel (non-ferrous) components for wet environments to prevent corrosion
- **T** - Threaded pivot screw and nylon washer to replace jamb bracket
- **HC** - Hold Closed
- **SPECIAL** - Contact ABH if the dimensions, hardware or specifications differ from what is shown on the template or if additional hardware is being used at the top of the door. A custom template and/or unit may be required.
- If using a closer, please go to our website and reference "ABH Overhead Holder & Stop Compatibility Chart" to determine possible conflict.

| Door Frame Opening | Model Number | | |
|--------------------|-------------------------|-----------|--------|
| | Hinges or Offset Pivots | Hold Open | Stop |
| 28" - 31-15/16" | 9011A | 9021A | 9031A |
| 32" - 39-15/16" | 9012A | 9022A | 9032A |
| 40" - 43-15/16" | 9013A | 9023A | 9033A |
| 44" - 54" | 9014A | 9024A | 9034A |
| ANSI Code | C02511 | C02541 | C02531 |

Material

- **Stainless steel** is the standard base material for arm, channel and jamb bracket for all finishes.

Specify When Ordering

- Model Number
- Finish
- Option(s), if applicable

Architectural Builders Hardware Manufacturing, Inc.
1222 Ardmore Avenue, Itasca, IL 60143
Tel: 630-875-9900 • Fax: 630-875-9918 / 800-932-9224
Web: www.abhmfg.com • Email: abhinfo@abhmfg.com

