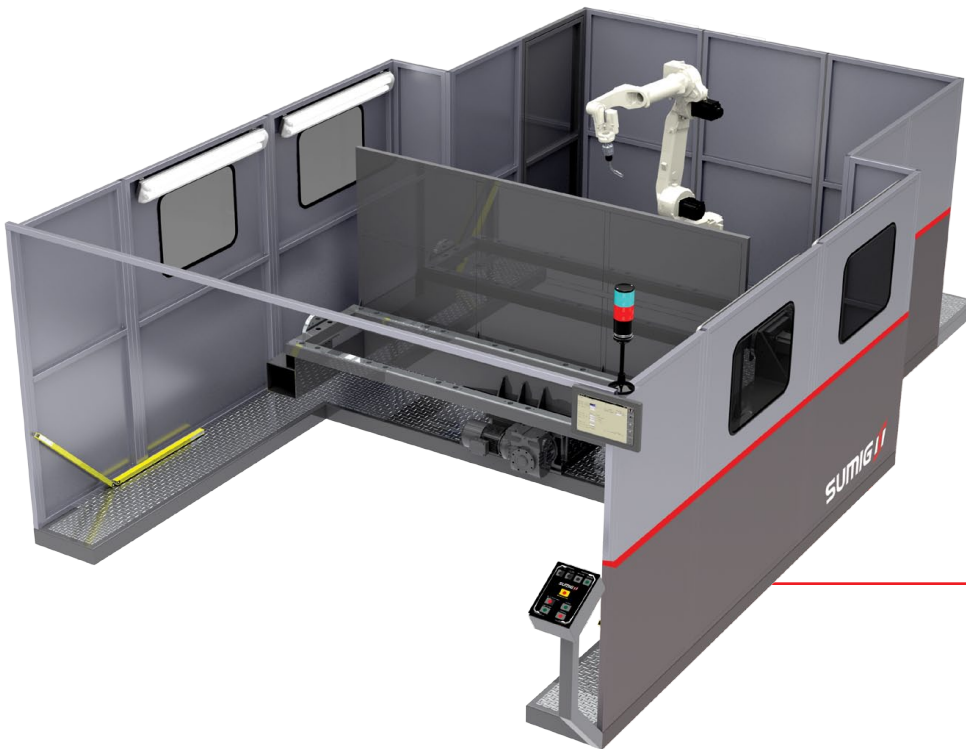




## Rotational Dual Automatic Rotation Stations Welding Robotic System



**Modular base concept.**  
Allow cell layout to be  
changed if ever  
needed.

**Smaller footprint with  
1 load/unload point.**

**Safe enviroment, in  
compliance with ANSI/RIA  
15.06 Standard.**

**Machined Tables with Quick  
tool changing system**



Dual workstations with guide bushes for positioning and safety devices, in compliance with ANSI/RIA 15.06 Standard.

**Ready-To-Weld** robotic welding system offers the best cost benefit ratio. Designed for welding where shop space may be an issue. Increase your productivity easily and quickly, allowing an easy integration with any robot brand and welding inverter.

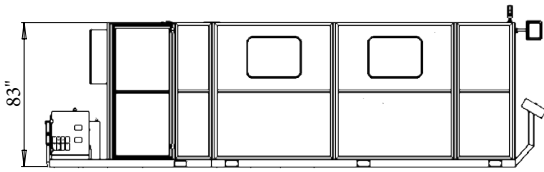
**All inclusive  
Package**



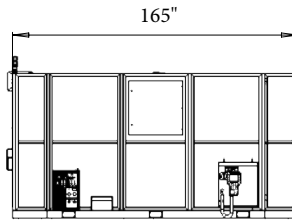
<b>Tabletop dimensions</b>	98" x 29"
<b>Maximum table load capacity</b>	2200 lb
<b>Maximum cell power requirements</b>	66A
<b>Input Voltage/Current</b>	200V to 240V (three-phase)
<b>Cell Dimensions</b>	165" L x 307" W x 83" H
<b>Weight</b>	9500 lb
<b>Power requirement</b>	230V 70A / 460V 50A
<b>Air Requirements/Flow Rate</b>	87 Psi/0.59 Cfm

Measures

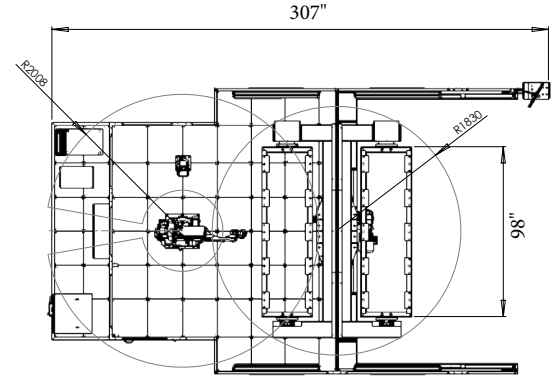
---



Front



Side



Working Area

Standard Components

---



6 axis 2.036mm Reach Robot



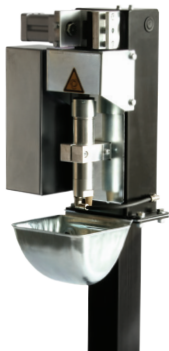
Inverter Power Source



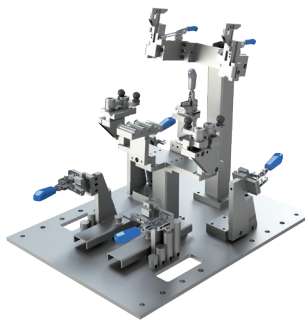
Air or Water Cooled Torch with Safety Clutch

Optionals

---



Torch Cleaner and Wire Cutter Unit



Tooling



Neuron-S Adapt



SUMIG USA CORPORATION  
1504 Eagle Ct Ste 8  
Lewisville - TX - 75057

☎ +1 800 503 9717  
🌐 [www.sumigusa.com](http://www.sumigusa.com)  
✉ [sumigusa@sumig.com](mailto:sumigusa@sumig.com)