



Small Footprint - Dual Station Robotic Cell



Quick installation and easy to move

Fully mounted on common base and easy integration with any robot brand and welding inverter.

Designed for medium productivity with variable lots

Automatic operation doors and monitored maintenance door



Cell has machined tables with guide bushes for positioning and 02 (two) workstations with safety relays in compliance with ANSI/RIA 15.06 Standard.

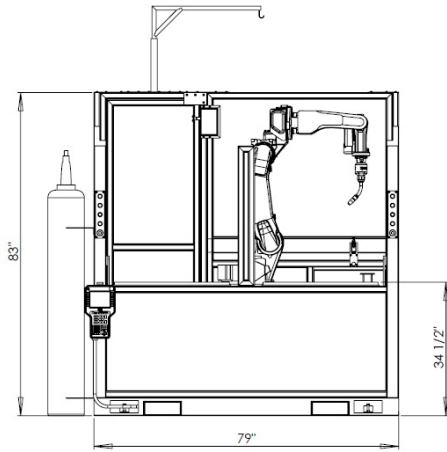
Ready-To-Weld robotic welding system offers the best cost benefit ratio. Designed for welding of medium size parts and where shop space maybe an issue. Increase your productivity easily and quickly, allowing an easy integration with any robot brand and welding inverter.

All inclusive Package

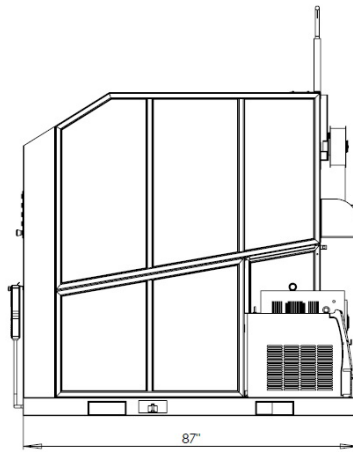


Tabletop dimensions	26" x 29"
Maximum table load capacity	1700 lb
Maximum cell power requirements	66A
Input Voltage/Current	200V to 240V (three-phase)
Cell Dimensions	79" L x 87" W x 83" H
Weight	4500 lb
Power requirement	230V 70A / 460V 50A
Air Requirements/Flow Rate	87 Psi/0.59 Cfm

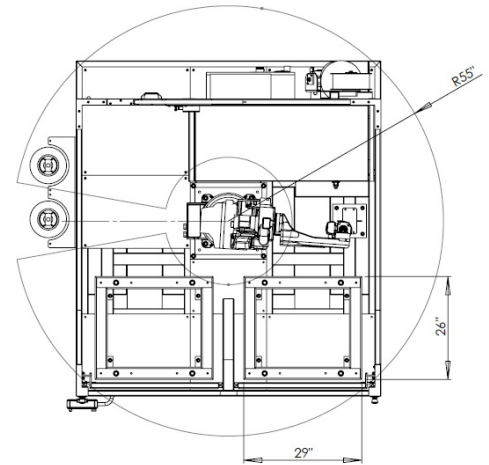
Measures



Front



Side



Working Area

Standard Components



6 axis

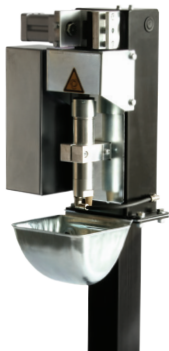


400 Amp Inverter

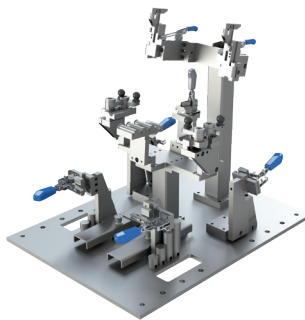


400 Amp Air Cooled Torch with Safety Clutch

Optionals



Torch Cleaner and Wire Cutter Unit



Tooling



Neuron-S Adapt



SUMIG USA CORPORATION
8600 Commodity Circle #159
Orlando, FL 32819

☎ +1 800 503 9717
🌐 www.sumigusa.com
✉ sumigusa@sumig.com